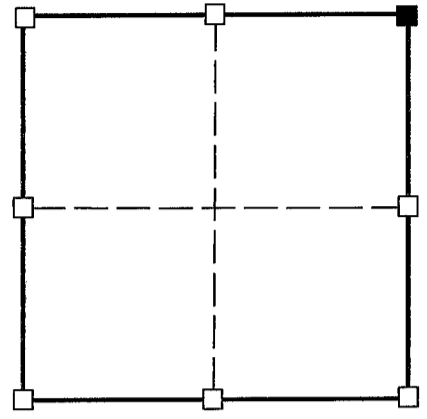


**U.S. PUBLIC LAND SURVEY MONUMENT RECORD - GRANT COUNTY, WI**

(a) Corner location:

Township 6 North  
 Range 5 West  
 Town of MILLVILLE

I, Richard Marks certify that the corner location on this record was determined by me and that this U.S. public land survey monument record is correct and complete to the best of my knowledge and belief.



■ = corner location  
 Section 8

Dated this 29th day of May, 2000

  
 Richard Marks R.L.S. # S-1473

**History of corner establishment:**

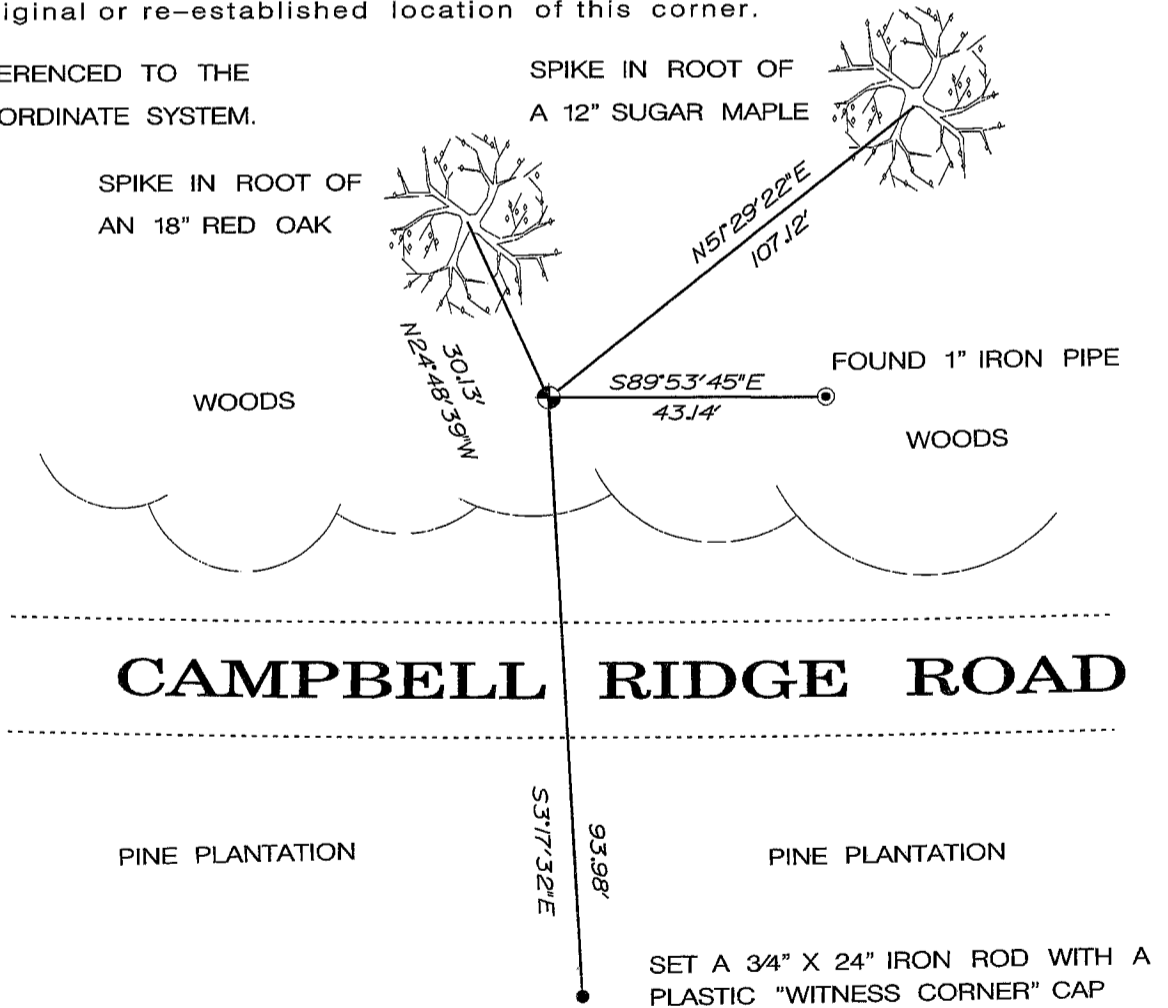
Original survey was done by Robert Clark in 1832. Robert Lampman shows an existing 1" iron pipe on the certified surveys he prepared for Robert Douglas dated 11/11/1983. I did not find a corner form on record for this corner.

**Description of corner evidence found:**

I found the 1" iron pipe set by Lampman and set a 1" iron rod with a Grant County aluminum cap.

**Description of corner and witness monuments, references and accessories used to perpetuate the original or re-established location of this corner.**

BEARINGS ARE REFERENCED TO THE GRANT COUNTY COORDINATE SYSTEM.



**Control: COMBINATION OF GPS AND CONVENTIONAL FIELD CONTROL**

Datum: WHP NETWORK		County coordinates		State plane coordinates (1983 NAD)	
Lat.		North	N 585768.27410	North	
Long.		East	E 746171.81410	East	