

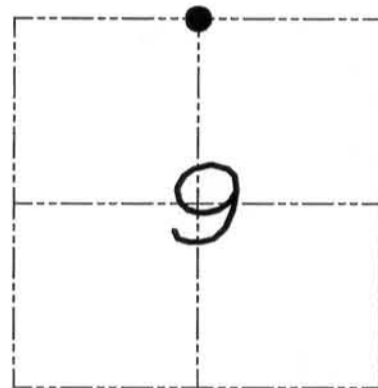
U.S. PUBLIC LAND SURVEY MONUMENT RECORD

Section 9, Town 6 North Range 5 West, Town of Millville, Grant County, Wisconsin

CERTIFICATE

I, Larry L. Austin, do hereby certify that the corner location on this record was determined by me and/or under my direct supervision and that this U.S. public land survey monument record is correct and complete to the best of my knowledge and belief.

Larry L. Austin
Larry L. Austin, S-1903



● = CORNER LOCATION

HISTORY OF CORNER

Corner was originally set in 1832. In 1983 Lampman set a 3" x 30" iron pipe. No other record of the corner was found.

CORNER EVIDENCE FOUND

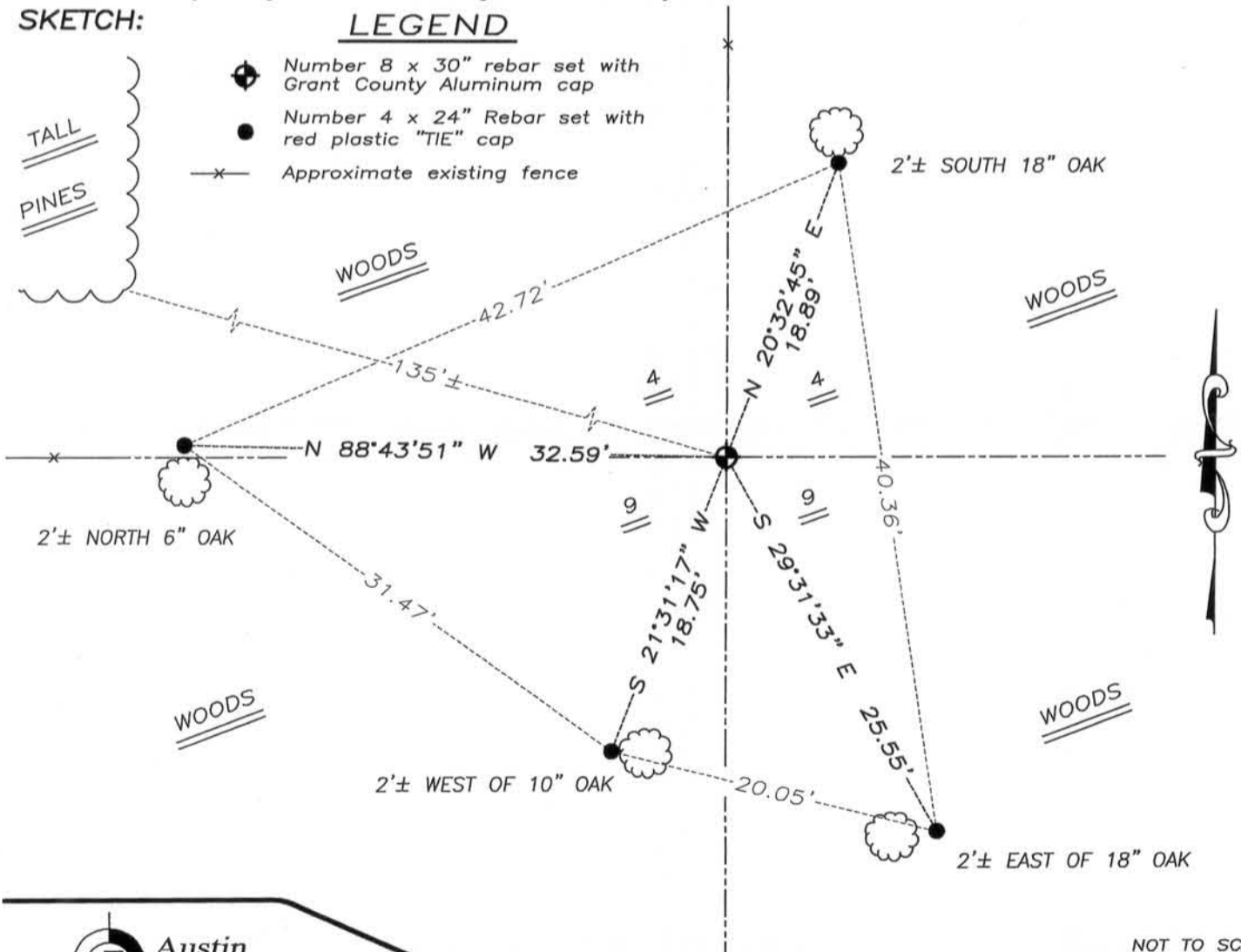
I was unable to locate Lampman's monument. I reset the corner based on Lampman's adjoining corner and monuments. Verified this location using EDM & GPS methods.

DESCRIPTION OF CORNER AND WITNESS MONUMENTS, references and accessories used to perpetuate the original or re-established location of this corner. Witnesses to monument location Bobby Sedgwick & Brad Digman & Shelby Blindert

SKETCH:

LEGEND

- Number 8 x 30" rebar set with Grant County Aluminum cap
- Number 4 x 24" Rebar set with red plastic "TIE" cap
- x— Approximate existing fence



NOT TO SCALE



Austin Engineering LLC
austinengineeringllc.com

4211 HWY 81 E, LANCASTER, WI 53813
PHONE: 608-723-6363 FAX: 608-723-6702

JOB NUMBER 09S265-DNR
FIELDBOOK: TDSR, 2904
G:\T6NR6W\18
H:\TIE\T6NR5W\28

DRAWN BY: SW AUSTIN
APPROVED: LL AUSTIN

28

FEB 23 2011