

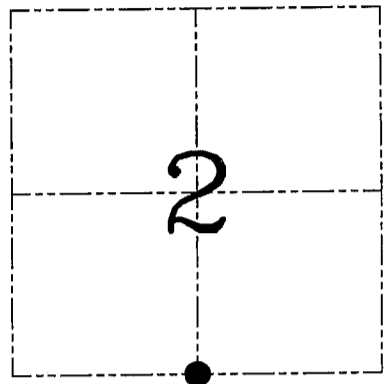
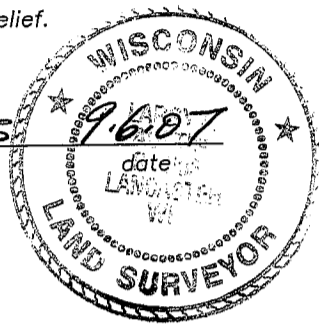
U.S. PUBLIC LAND SURVEY MONUMENT RECORD – GRANT COUNTY, WI

Section 2, Town 6 North Range 5 West, Town of Millville

CERTIFICATE

I, Larry L. Austin, do hereby certify that the corner location on this record was determined by me and/or under my direct supervision and that this U.S. public land survey monument record is correct and complete to the best of my knowledge and belief.

Larry L. Austin
Larry L. Austin, S-1903



● = CORNER LOCATION

HISTORY OF CORNER ESTABLISHMENT

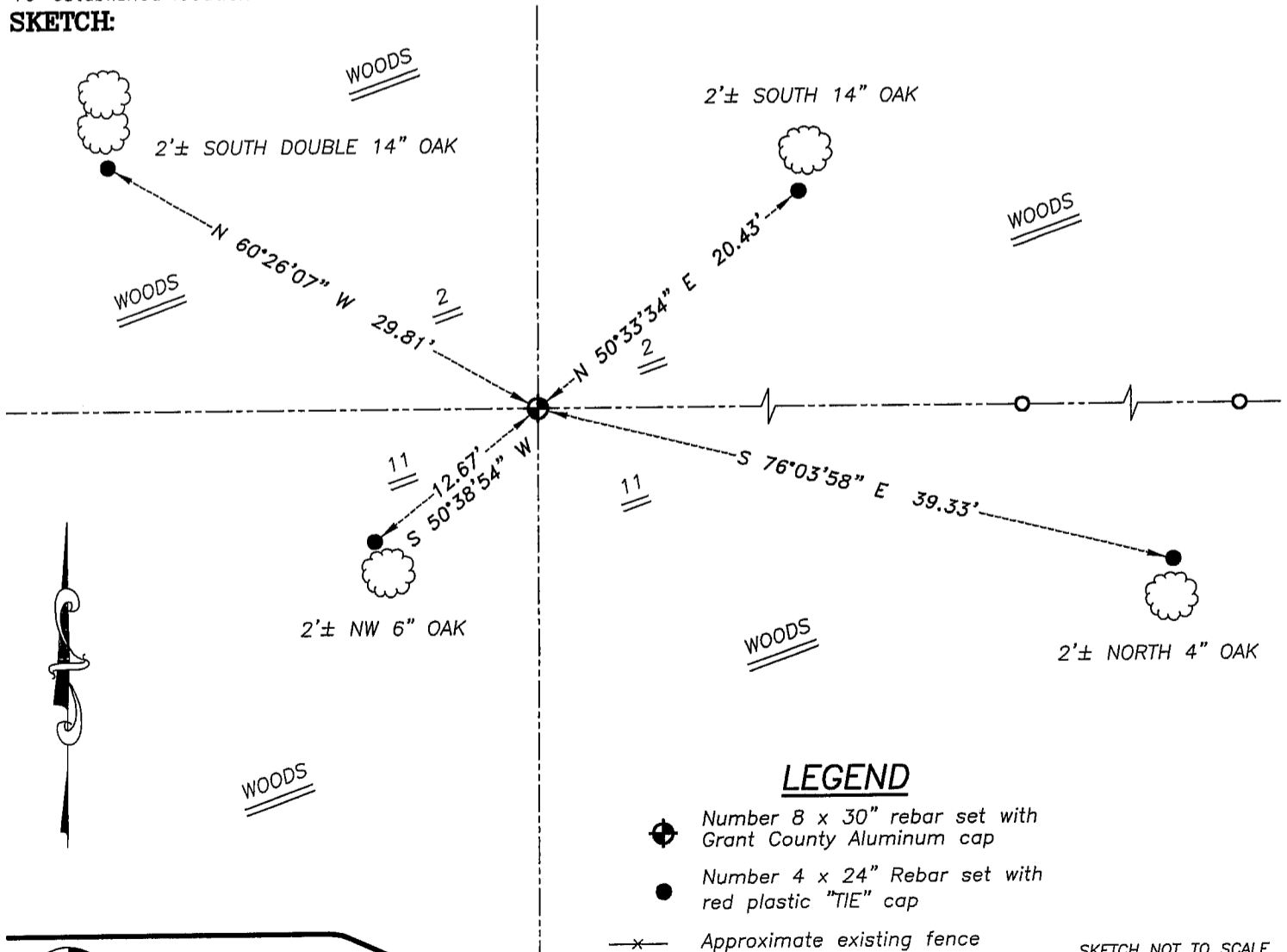
Corner was originally set in 1833 by Parke. In 1889 Gould tied to the corner with no mention of monument. No other record of the corner was found.

DESCRIPTION OF CORNER EVIDENCE FOUND

I was unable to locate evidence of the original corner. Cecka set the Southwest and Southeast corners of the SE 1/4 of the SE 1/4 of Section 2. I protracted that dimension and bearing West and set the corner. Verified using EDM & GPS methods.

DESCRIPTION OF CORNER AND WITNESS MONUMENTS, references and accessories used to perpetuate the original or re-established location of this corner. Witnesses to corner location Bobby Sedgwick & Brad Digman & Shane Austin

SKETCH:



LEGEND

- (with cross) Number 8 x 30" rebar set with Grant County Aluminum cap
- (solid) Number 4 x 24" Rebar set with red plastic "TIE" cap
- x- Approximate existing fence

SKETCH NOT TO SCALE

Austin Engineering LLC
4211 HWY 81 E, LANCASTER, WI 53813
PHONE 608-723-6363 FAX 608-723-6702

JOB NUMBER 07S078
FIELDBOOK: TDSR, 2602B
G:\T6NR5W\02
H:\TIE\T6NR5W\24

DRAWN BY: SW AUSTIN
APPROVED: LL AUSTIN