

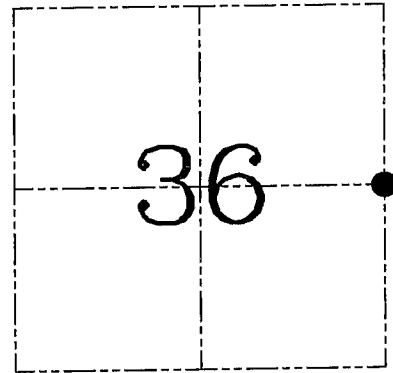
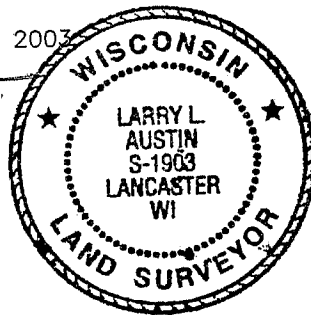
U.S. PUBLIC LAND SURVEY MONUMENT RECORD – GRANT COUNTY, WI
Section 36, Town 6 North Range 4 West, Town of Mount Hope

CERTIFICATE

I, Larry L. Austin, do hereby certify that the corner location on this record was determined by me and/or under my direct supervision and that this U.S. public land survey monument record is correct and complete to the best of my knowledge and belief.

Dated this 21st day of March, 2003

Larry L. Austin
 Larry L. Austin S-1903



● = CORNER LOCATION

HISTORY OF CORNER ESTABLISHMENT

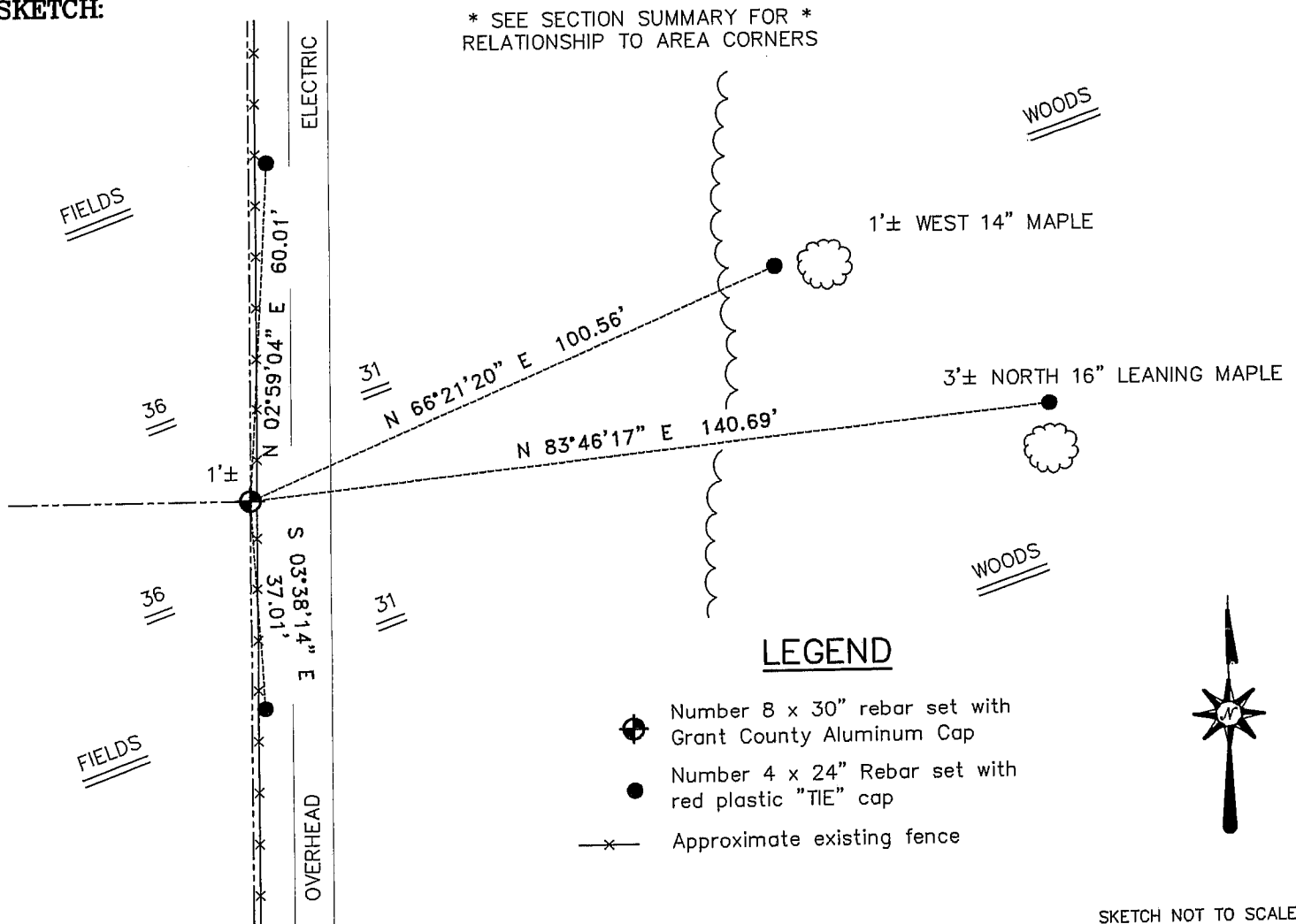
Corner was originally set in 1832 by Sibley.
 No other record of the corner was found.

DESCRIPTION OF CORNER EVIDENCE FOUND

Corner was set proportionately between occupied corners along the Easterly line of Section 36. Verified this location using EDM & GPS methods.

DESCRIPTION OF CORNER AND WITNESS MONUMENTS, references and accessories used to perpetuate the original or re-established location of this corner. Witnesses to corner location Bobby Sedgwick & Shelby Blindert & Brad Digman

SKETCH:



SKETCH NOT TO SCALE

AUSTIN ENGINEERING, LLC
 4211 HWY 81 EAST, LANCASTER, WI 53813
 PHONE 608-723-6363 FAX 608-723-6702

FIELDBOOK: SDR33, 23-01
 G: \T5NR4W\02
 C: \SWA\TIE\T5NR4W\120
 JOB NUMBER 03S013

DRAWN BY: SW AUSTIN
 APPROVED: LL AUSTIN

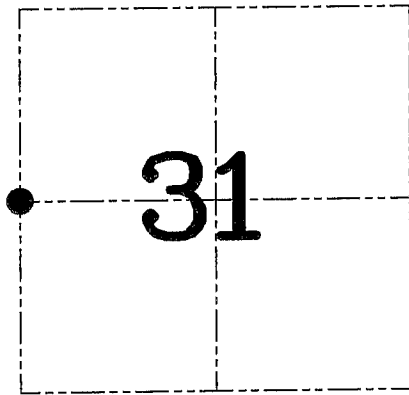
CORNER NUMBER 120

U.S. PUBLIC LAND SURVEY MONUMENT RECORD – GRANT COUNTY, WI
Section 31, Town 6 North Range 3 West, Town of Mount Ida

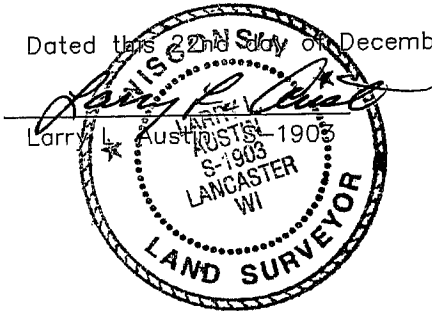
CERTIFICATE

I, Larry L. Austin, do hereby certify that the corner location on this record was determined by me and/or under my direct supervision and that this U.S. public land survey monument record is correct and complete to the best of my knowledge and belief.

Dated this 22nd day of December, 2003



● = CORNER LOCATION



HISTORY OF CORNER ESTABLISHMENT

Corner was not set with original surveys. In 1853 Clark tied to the corner. No other record of the corner was found.

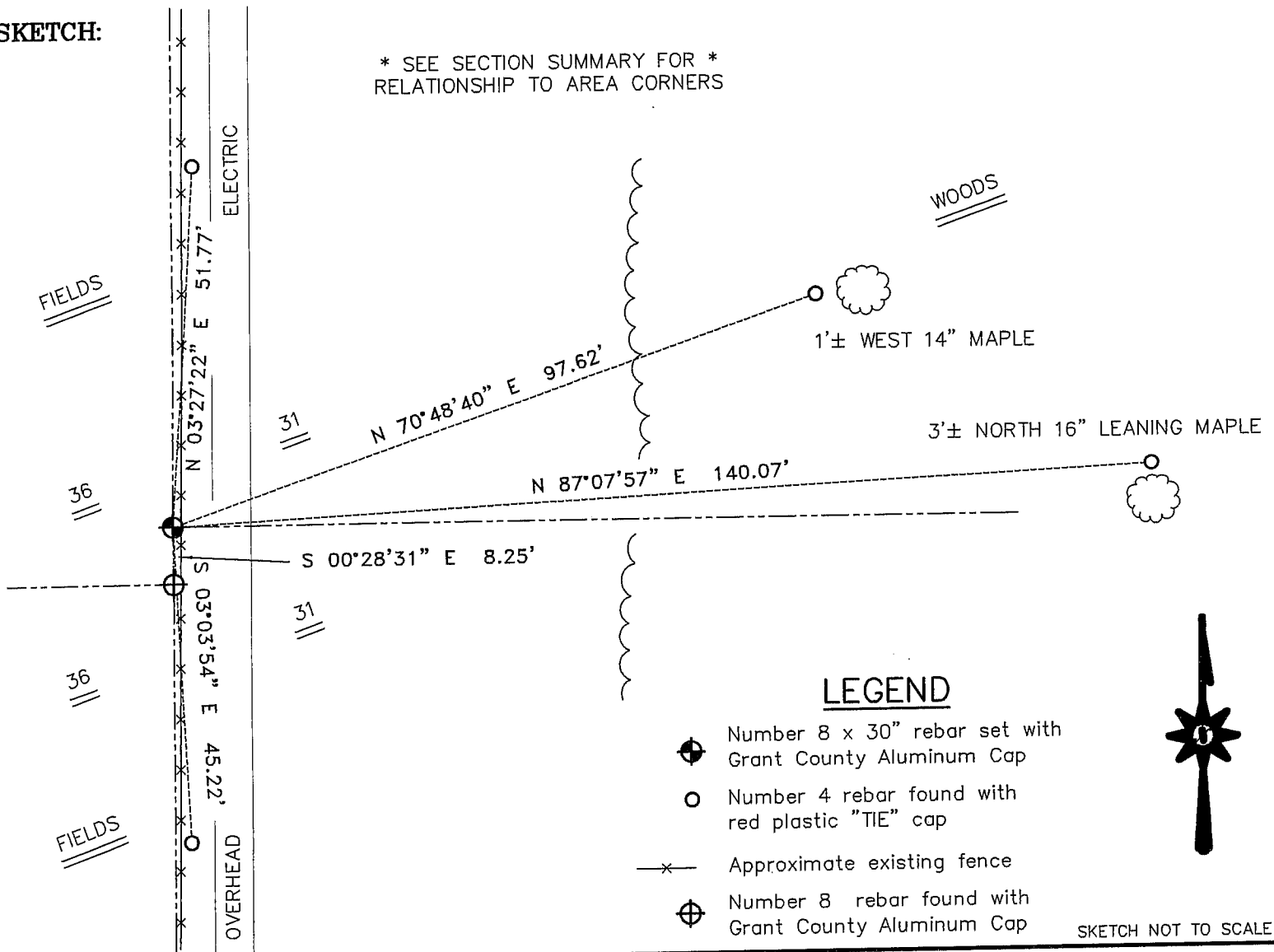
DESCRIPTION OF CORNER EVIDENCE FOUND

I reset the corner at the proportioned offset from the East 1/4 of Section 36. Verified this location using EDM & GPS methods.

DESCRIPTION OF CORNER AND WITNESS MONUMENTS, references and accessories used to perpetuate the original or re-established location of this corner. Witnesses to corner location Bobby Sedgwick & Shelby Blindert & Brad Digman

SKETCH:

* SEE SECTION SUMMARY FOR *
RELATIONSHIP TO AREA CORNERS



LEGEND

- ⊕ Number 8 x 30" rebar set with Grant County Aluminum Cap
- Number 4 rebar found with red plastic "TIE" cap
- x- Approximate existing fence
- ⊕ Number 8 rebar found with Grant County Aluminum Cap



SKETCH NOT TO SCALE

AUSTIN ENGINEERING, LLC

4211 HWY 81 EAST, LANCASTER, WI 53813
 PHONE 608-723-6363 FAX 608-723-6702

FIELDBOOK: TDS RNGR, 2301

G: \T6NR3W\30A
 H: \TIE\T6NR3W\114
 JOB NUMBER 03S257

DRAWN BY: SW AUSTIN
 APPROVED: LL AUSTIN

CORNER NUMBER 114