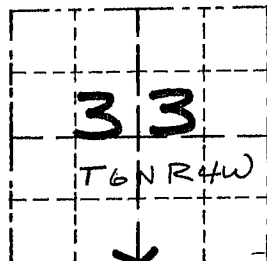


# GRANT COUNTY

## Survey Monument Record

TYPE OF MONUMENT RAILROAD SPIKE SET  
 STATE PLANE COORDINATES: N \_\_\_\_\_  
 E \_\_\_\_\_  
 ELEVATION — M.S.L. DATUM: \_\_\_\_\_  
 THETA ANGLE: \_\_\_\_\_  
 FIELD BOOK: 95-03  
 PAGE: 19

CORNER NO. 128  
 SECTION 33  
 TOWN 6N  
 RANGE 4W



LOCATION  
 (Indicated by "X")

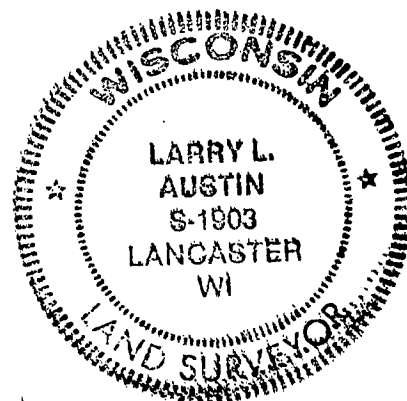
### BASIS FOR MONUMENT LOCATION

(Use reverse side if necessary)

Show info such as: History of corner, with reference to Vol. and pg., dates, surveyor; exact description of monument replaced; if location computed, by taped or EDM traverse; landowner, remarks, etc.

CORNER WAS SET AT  
 OCCUPATION AND  
 VERIFIED BY EDM.  
 TRAVERSE OF THE  
 AREA.

SEAL:



CERTIFIED CORRECT

*Larry L. Austin*  
 Registered Land Surveyor

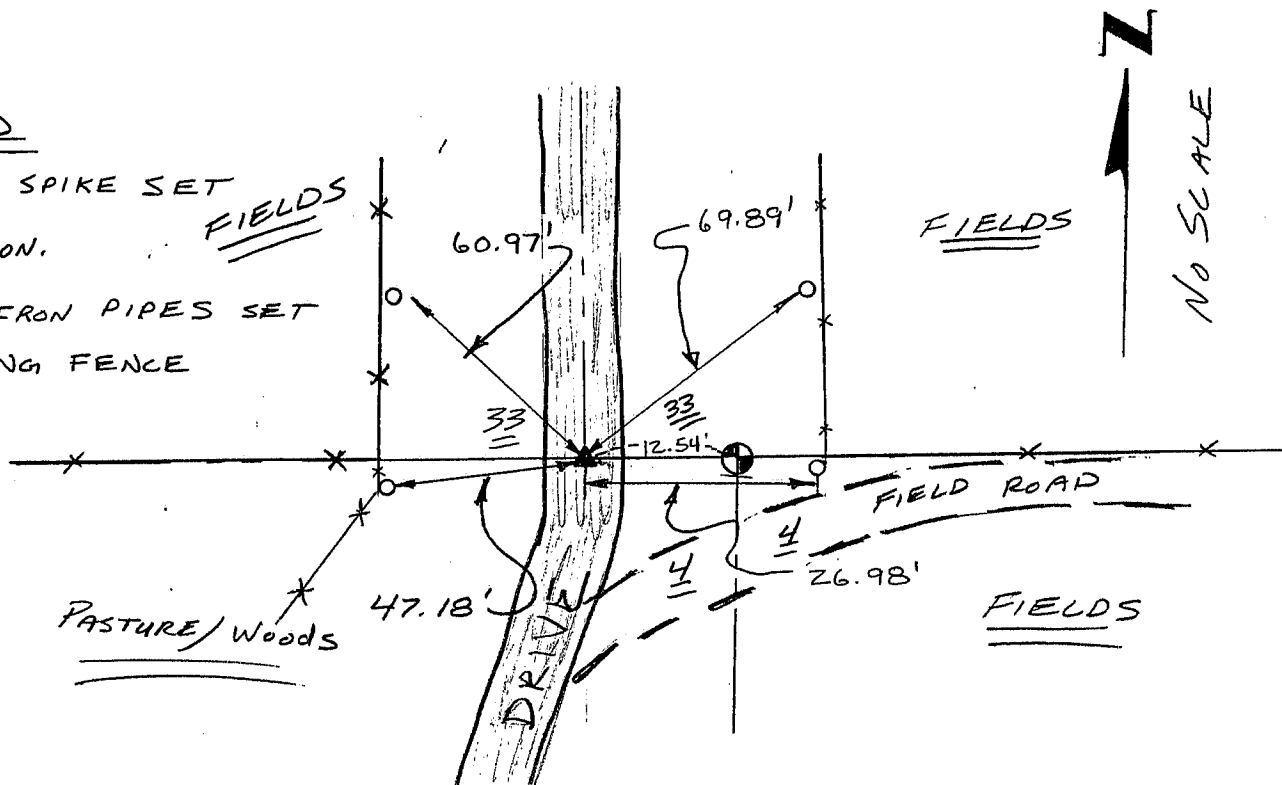
DATE: 7/15/95

### TIE SKETCH

Show at least three (3) ties and monument

#### LEGEND

- ▲ RAILROAD SPIKE SET
- ⊕ ALUM. MON.
- 1"X12" IRON PIPES SET
- XX EXISTING FENCE



# GRANT COUNTY

## Survey Monument Record

TYPE OF MONUMENT GRANT County Alum. Mon.

STATE PLANE COORDINATES: N \_\_\_\_\_  
E \_\_\_\_\_

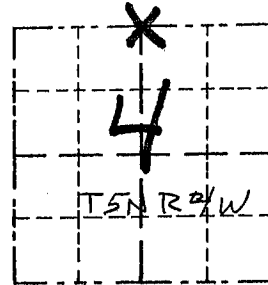
ELEVATION — M.S.L. DATUM: \_\_\_\_\_

THETA ANGLE: \_\_\_\_\_

FIELD BOOK: 95-03

PAGE (19)

CORNER NO. 8  
SECTION 04  
TOWN 5N  
RANGE 4W  
N 1/4 COR



LOCATION  
(Indicated by "X")

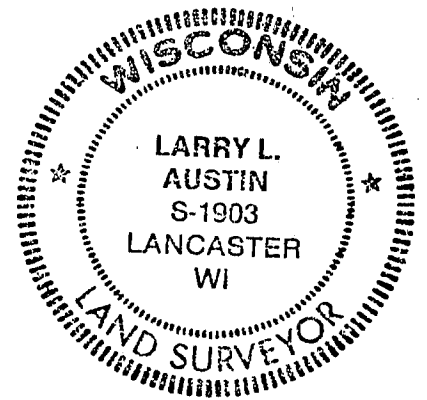
### BASIS FOR MONUMENT LOCATION

(Use reverse side if necessary)

Show info such as: History of corner, with reference to Vol. and pg., dates, surveyor; exact description of monument replaced; if location computed, by taped or EDM traverse; landowner, remarks, etc.

SEAL:

CORNER WAS SET ON THE SOUTH LINE OF SECTION 33, T6N, R4W AND AT PROPORTIONATE OFFSET DISTANCE RECORDED AT NORTHEAST CORNER OF SECTION 4 AND THE NORTHWEST CORNER SECTION 4, (T5N, R4W) AND VERIFIED BY EDM TRAVERSE OF THE AREA.



CERTIFIED CORRECT

*Larry L. Austin*  
Registered Land Surveyor

DATE: 7/15/95

### TIE SKETCH

Show at least three (3) ties and monument

#### LEGEND

- ▲ RAILROAD SPIKE SET
- ⊕ Alum. Mon. SET
- 1"X12" IRON PIPES
- \*\*\* EXISTING FENCE

PASTURE/WOODS

