

# GRANT COUNTY

## Survey Monument Record

GRANT COUNTY  
 TYPE OF MONUMENT Alum. Mon. SET  
 STATE PLANE COORDINATES: N \_\_\_\_\_  
 E \_\_\_\_\_  
 ELEVATION — M.S.L. DATUM: \_\_\_\_\_  
 THETA ANGLE: \_\_\_\_\_  
 FIELD BOOK: 95-03  
 PAGE 19

CORNER NO. 129  
 SECTION 33  
 TOWN 6N  
 RANGE 4W

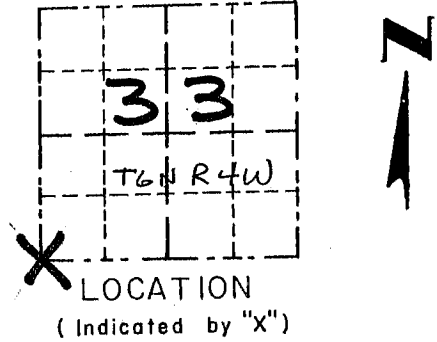
### BASIS FOR MONUMENT LOCATION

(Use reverse side if necessary)

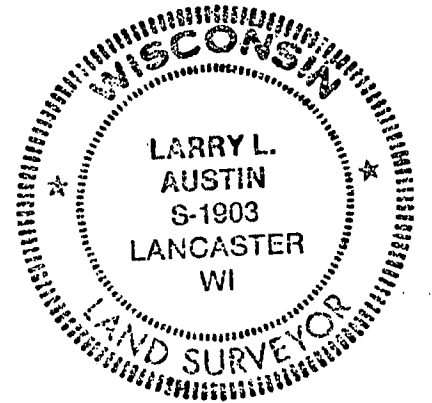
Show info such as: History of corner, with reference to Vol. and pg., dates, surveyor; exact description of monument replaced; if location computed, by taped or EDM traverse; landowner, remarks, etc.

ORIGINAL CORNER SET  
 IN 1832 BY SIBLEY.

CORNER WAS RESET  
 AT THE RECORDED DISTANCE  
 WEST OF THE NORTHWEST  
 CORNER, SECTION 4, T5N, R4W,  
 AND VERIFIED BY EDM  
 TRAVERSE OF THE AREA.



SEAL:

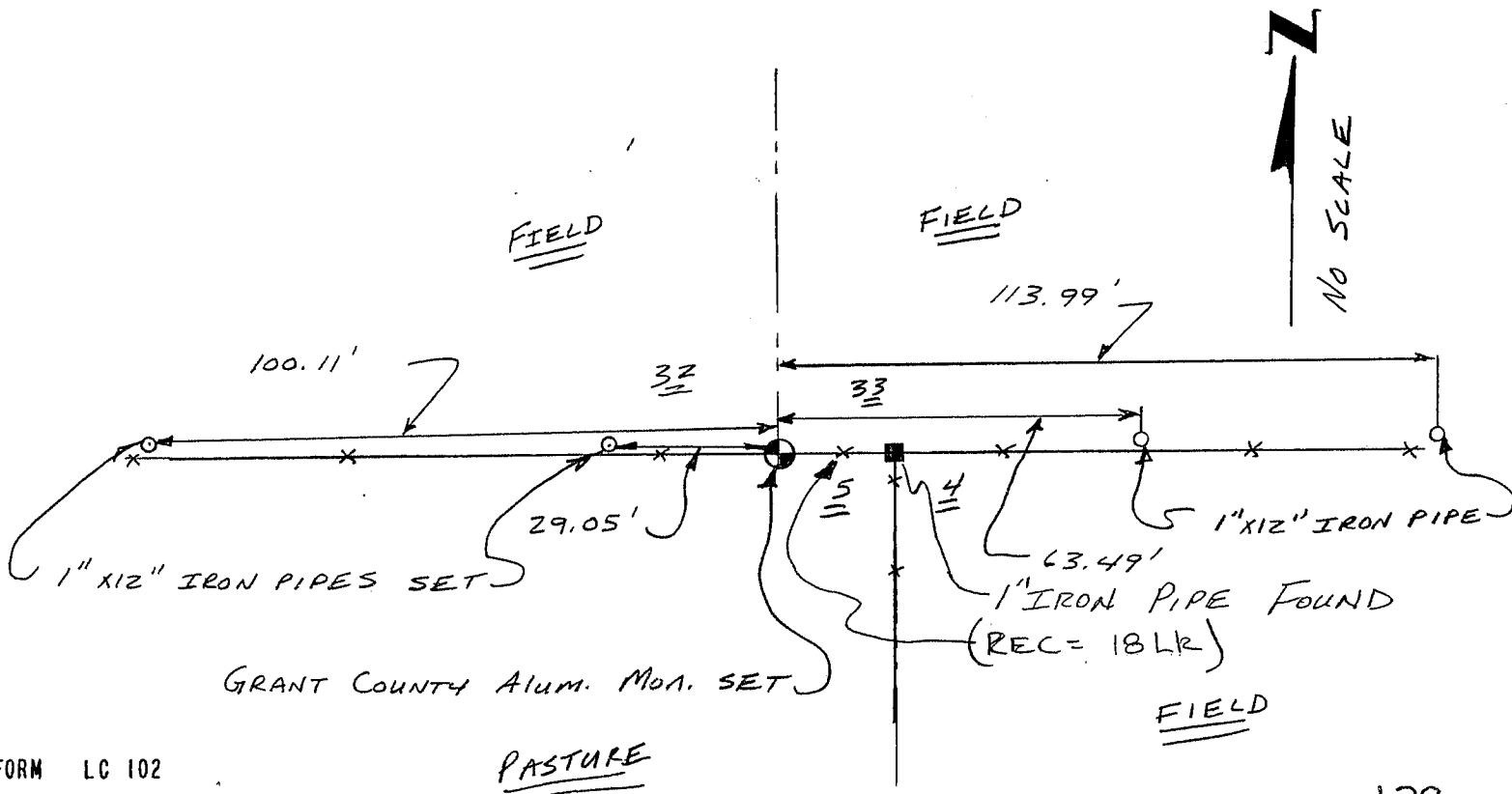


CERTIFIED CORRECT

*Larry L. Austin*  
 Registered Land Surveyor  
 DATE: 7/15/95

### TIE SKETCH

Show at least three (3) ties and monument



Little Abant

CORNER DESCRIPTION: NW CORNER, SECTION 04, T 5N, R 4W

STATE PLANE COORDINATES: N \_\_\_\_\_, E \_\_\_\_\_

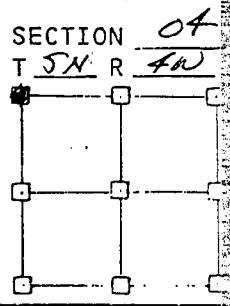
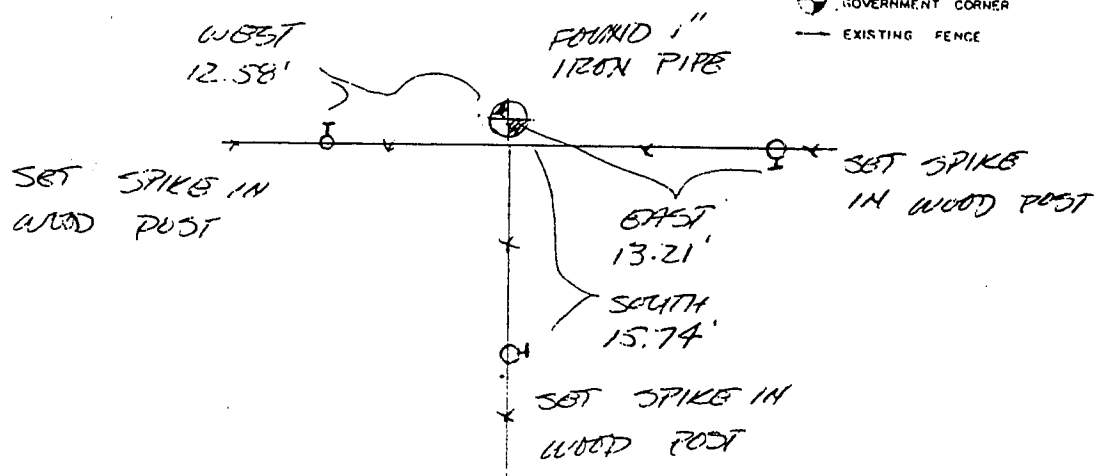
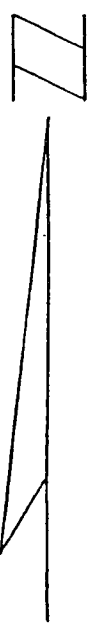
THETA ANGLE: \_\_\_\_\_

HORIZONTAL DATUM: WISCONSIN STATE PLANE COORDINATE SYSTEM, SOUTH ZONE

EVIDENCE: FOUND 1" IRON PIPE @ EXISTING FENCE TO SOUTH WEST @ 675'  
BY POST USED AS NW CORNER IN DAVID KROHN SURVEY

MONUMENT: FOUND , PLACED   
METHOD OF RESTORATION (RE-ESTABLISHMENT):  
ACCEPTED EXISTING MONUMENT   
ACCEPTED OCCUPATION   
N , E  LOST CORNER PROPORTIONATE METHODS  
DATE CORNER SET: 11-28-88

- LEGEND
- ▲ SET #6 REBAR, 113 LBS PER LINEAL FT MIN WT
  - SET "X24" IRON PIPE, 113 LBS PER LINEAL FT MIN WT
  - SET 2" X 30" IRON PIPE, 365 LBS PER LINEAL FT MIN WT
  - FOUND 1" IRON PIPE
  - FOUND 2" IRON PIPE
  - FOUND R/R SPIKE
  - SET R/R SPIKE
  - ⊙ GOVERNMENT CORNER
  - EXISTING FENCE



NOT TO SCALE THIS CONFORMS TO WISCONSIN ADMINISTRATIVE CODE A-E 5.02

SURVEYOR'S AFFIDAVIT:  
STATE OF WISCONSIN)  
GRANT COUNTY) SS

I hereby certify that I, DOUGLAS J. MALLIET, have complied with the Wisconsin State Statutes, Statutes of the United States, and the rules and regulations made by the Secretary of the Interior in the location of the corner shown above.

DATE OF SURVEY: 11-30-88

Douglas J. Malliet  
REGISTERED LAND SURVEYOR  
# 1244



D. F. BURBACH MUNICIPAL & CIVIL ENGINEERS

410 NORTH SECOND STREET • PLATTEVILLE, WISCONSIN 53818 • (608) 348-3262