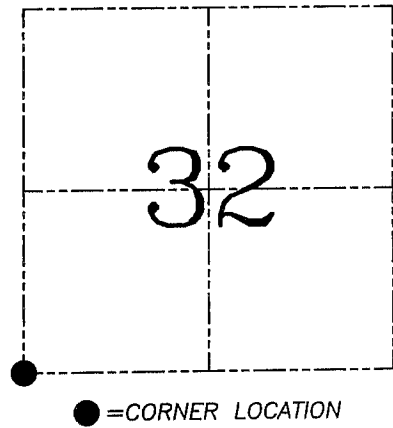
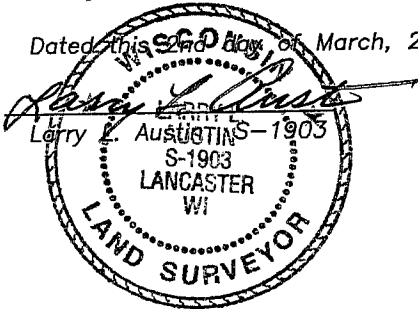


U.S. PUBLIC LAND SURVEY MONUMENT RECORD – GRANT COUNTY, WI
Section 32, Town 6 North Range 4 West, Town of Mount Hope

CERTIFICATE

I, Larry L. Austin, do hereby certify that the corner location on this record was determined by me and/or under my direct supervision and that this U.S. public land survey monument record is correct and complete to the best of my knowledge and belief.

Dated this 2nd day of March, 2004



HISTORY OF CORNER ESTABLISHMENT

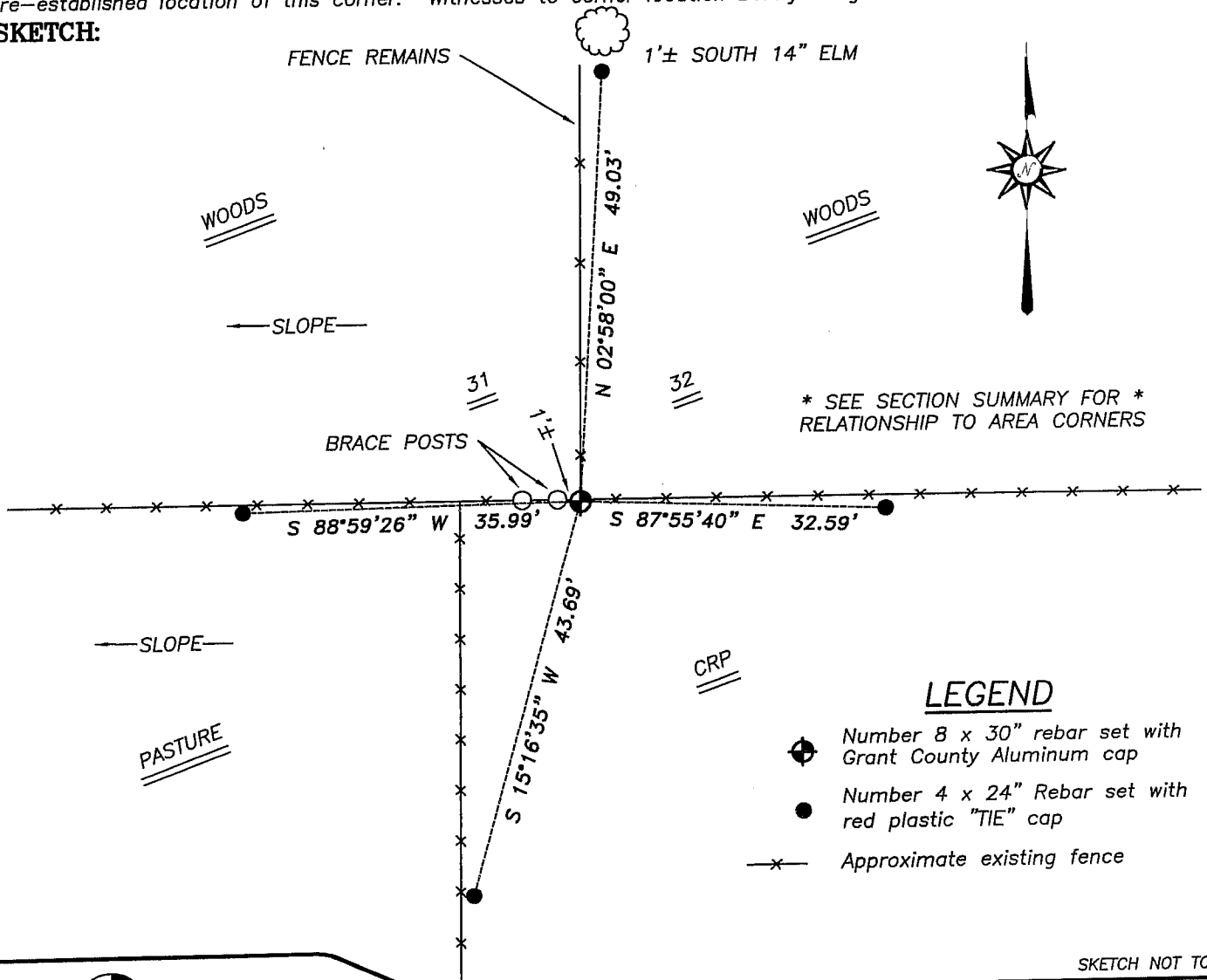
Corner was originally set in 1832 by Sibley.
 No other record of the corner was found.

DESCRIPTION OF CORNER EVIDENCE FOUND

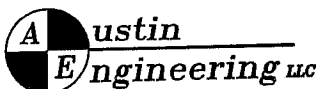
I found and accepted an occupied location.
 Verified this location using EDM & GPS methods.

DESCRIPTION OF CORNER AND WITNESS MONUMENTS, references and accessories used to perpetuate the original or re-established location of this corner. Witnesses to corner location Bobby Sedgwick & Shane Austin & Brad Digman

SKETCH:



SKETCH NOT TO SCALE



4211 HWY 81 E, LANCASTER, WI 53813
 PHONE 608-723-6363 FAX 608-723-6702

JOB NUMBER 03S326
 FIELDBOOK: TSDR, 2326
 G:\T6NR4W\32
 H:\TIE\T6NR4W\131

DRAWN BY: SW AUSTIN
 APPROVED: LL AUSTIN