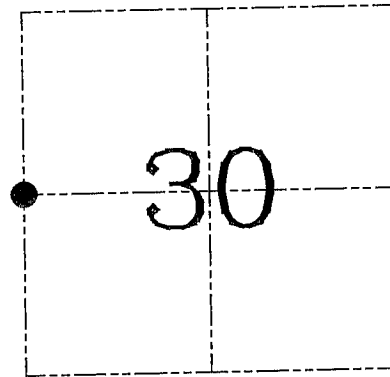


**U.S. PUBLIC LAND SURVEY MONUMENT RECORD – GRANT COUNTY, WI**  
**Section 30, Town 6 North Range 3 West, Town of Mount Ida**

**CERTIFICATE**

I, Larry L. Austin, do hereby certify that the corner location on this record was determined by me and/or under my direct supervision and that this U.S. public land survey monument record is correct and complete to the best of my knowledge and belief.

Dated this 8th day of July, 2003



● = CORNER LOCATION

**HISTORY OF CORNER ESTABLISHMENT**

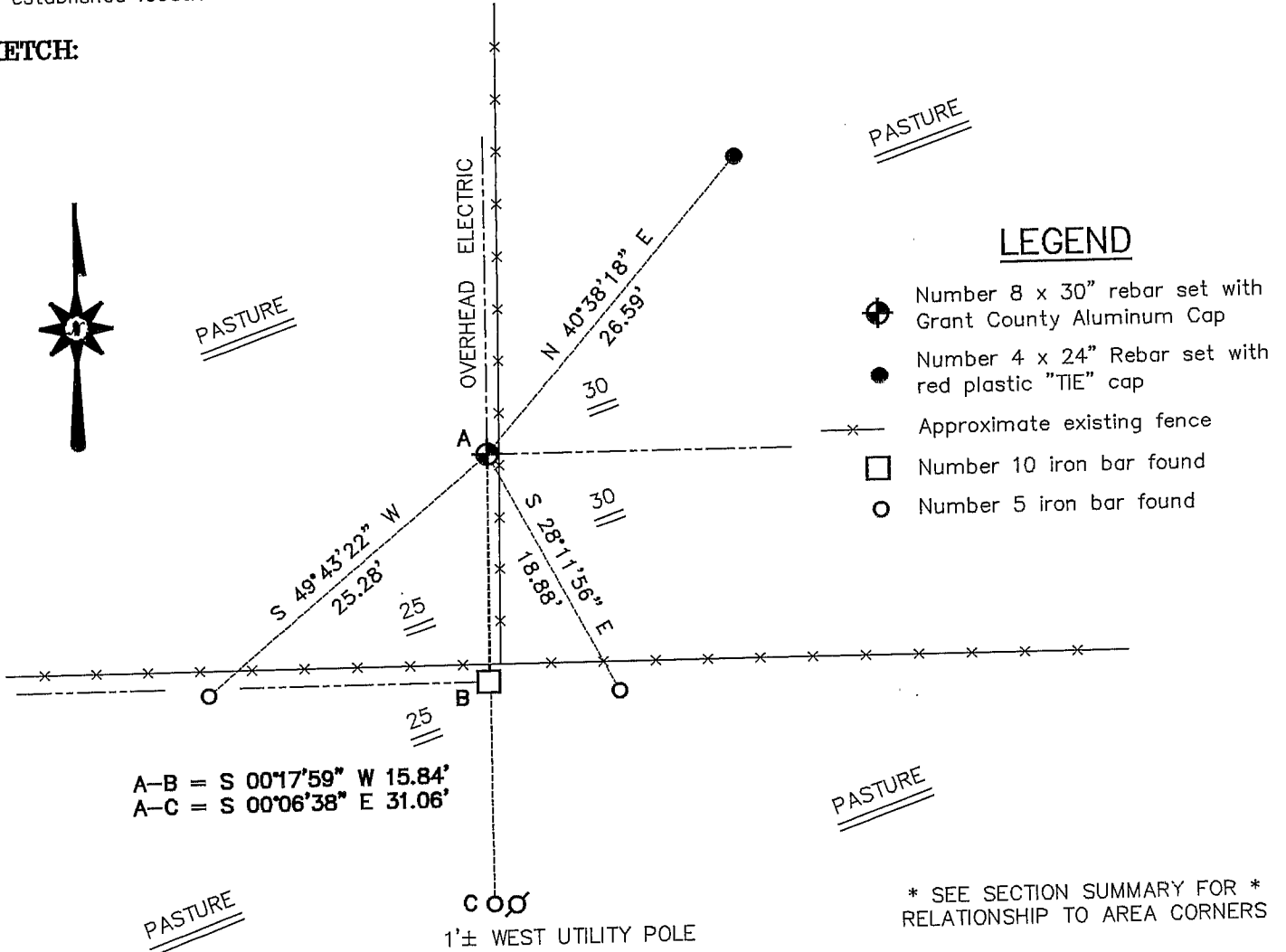
Corner was never originally set.

**DESCRIPTION OF CORNER EVIDENCE FOUND**

I set the corner at the proportioned offset from the existing East 1/4 of Section 25. Verified this location using EDM & GPS methods.

**DESCRIPTION OF CORNER AND WITNESS MONUMENTS**, references and accessories used to perpetuate the original or re-established location of this corner. Witnesses to corner location Bobby Sedgwick & Shane Austin & Brad Digman

**SKETCH:**



\* SEE SECTION SUMMARY FOR \* RELATIONSHIP TO AREA CORNERS

SKETCH NOT TO SCALE

**AUSTIN ENGINEERING, LLC**

4211 HWY 81 EAST, LANCASTER, WI 53813  
 PHONE 608-723-6363 FAX 608-723-6702

FIELDBOOK: TDSR, 2218  
 G: \T6NR3W\30A  
 H: \TIE\T6NR3W\94  
 JOB NUMBER 03S195

DRAWN BY: SW AUSTIN  
 APPROVED: LL AUSTIN

**CORNER NUMBER 94**

SEP 17 1903

# U. S. PUBLIC LAND SURVEY MONUMENT RECORD

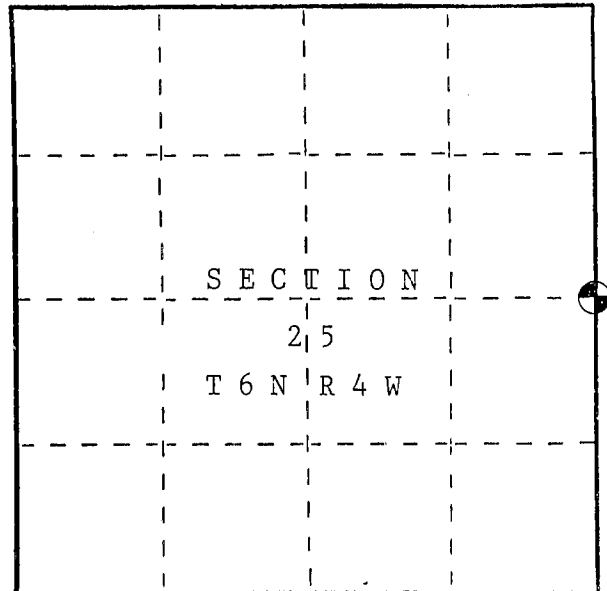
**INSTRUCTIONS :** This record shall show the location of the corner and shall include all of the following nine elements (a through i).

(a) Identify the corner by reference to the U.S. public land survey system.

○ = Corner monument restored.

East  $\frac{1}{4}$  corner of Section 25,  
Town 6 North, Range 4 West, Town of  
Mount Hope, Grant County, WI

Set  $1\frac{1}{4}$ " X 30" Iron Rod

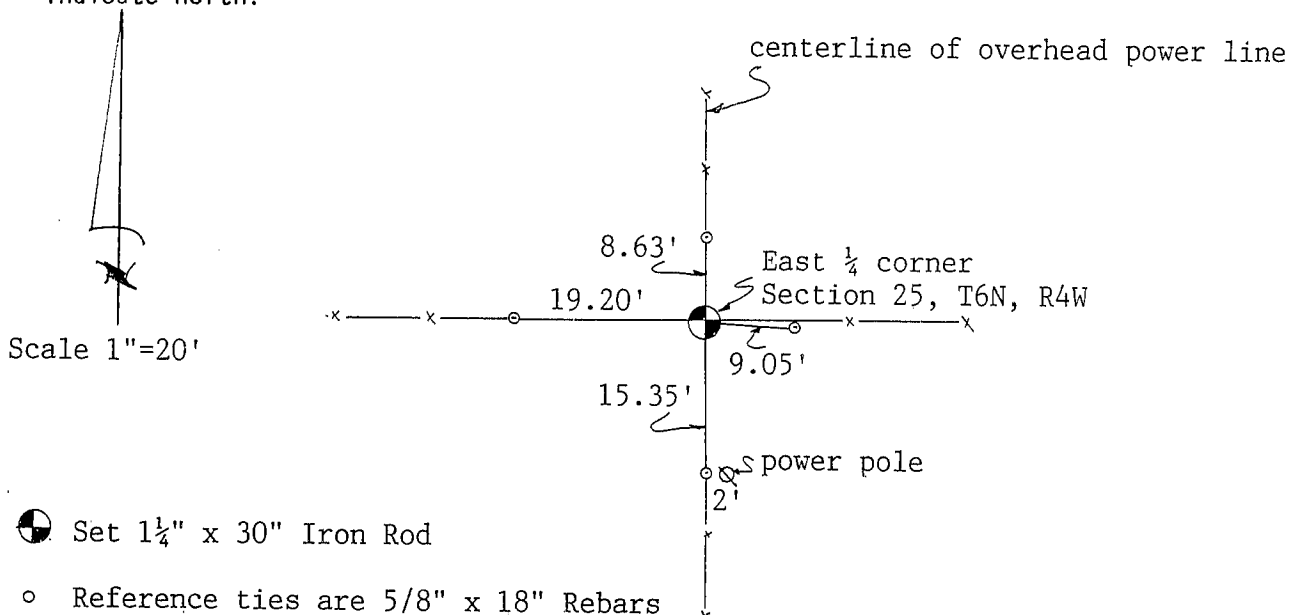


(b) Describe any record evidence, monument evidence, occupational evidence, testimonial evidence or any other material evidence you considered, and whether the monument was found or placed.

There is no record of this corner since the original government survey. I set this corner at an existing occupation corner.

(c) In the plan view drawing below, provide reference ties to at least 4 witness monuments, or, if the location is within a municipality, to at least 2 witness monuments. (Witness monuments shall be made of concrete, natural stone, iron or other equally durable material.) Describe witness monuments.

(d) Show a plan view drawing depicting the relevant monuments and reference ties which is sufficient in detail to enable accurate relocation of the corner monument if the corner monument is disturbed. Indicate north.



● Set  $1\frac{1}{4}$ " x 30" Iron Rod

○ Reference ties are  $\frac{5}{8}$ " x 18" Rebars

(e) Describe any material discrepancy between the location of the corner as restored or reestablished and the location of that corner as previously restored or reestablished by distance and direction. Show the discrepancy on the plan view drawing under (d), above. Show the distances between the corner as previously restored or reestablished and (1) the corner as restored or reestablished, and (2) to at least 2 of the witness monuments shown on the drawing in (d), above.

---

(f) Was the corner restored through acceptance of (1) an obliterated evidence location, or, (2) a found perpetuated location?

---

(g&h) Was the corner reestablished through lost corner proportionate methods? If so, show the method, including the directions and distances to other public land survey corners used as evidence or used for proportioning in determining the corner location?

No.

(i) John M. Halverson

(type or print name) certify that the corner location shown on this record was determined by me or under my direction and control and that this U.S. Public Land Survey Monument Record is correct and complete to the best of my knowledge and belief.

*John M. Halverson*  
Signature

11/13/92  
Date

