

SEP 17 1993

U. S. PUBLIC LAND SURVEY MONUMENT RECORD

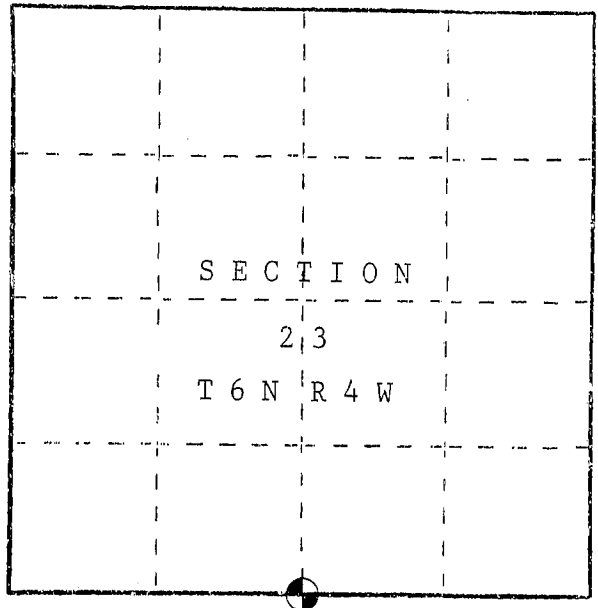
I N S T R U C T I O N S : This record shall show the location of the corner and shall include all of the following nine elements (a through i).

(a) Identify the corner by reference to the U.S. public land survey system.

○ = Corner monument restored.

South ¼ corner of Section 23,
Town 6 North, Range 4 West, Town of
Mount Hope, Grant County, WI

Set aluminum monument (DOT)



(b) Describe any record evidence, monument evidence, occupational evidence, testimonial evidence or any other material evidence you considered, and whether the monument was found or placed.

Volume B, Page 59, Grant County Survey Records—Survey dated May 26, 1847 of Section 26, T6N, R4W, located North ¼ corner of Section 26.

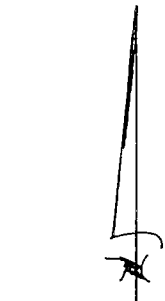
Volume B, Page 61, Grant County Survey Records—Survey dated May 27, 1847 of Section 23, T6N, R4W, located this corner and found original bearing trees.

Volume 2 of Highway Conveyances states this corner is 145' South of the centerline of U.S. HWY '18'.

There is no evidence of this corner as it falls in cropland. I set monument 18" below surface on a straight line from the Southwest corner and the Southeast corner of Section 23 and in line with a occupation line on the North side of U.S. HWY '18'.

(c) In the plan view drawing below, provide reference ties to at least 4 witness monuments, or; if the location is within a municipality, to at least 2 witness monuments. (Witness monuments shall be made of concrete, natural stone, iron or other equally durable material.) Describe witness monuments.

(d) Show a plan view drawing depicting the relevant monuments and reference ties which is sufficient in detail to enable accurate relocation of the corner monument if the corner monument is disturbed. Indicate north.

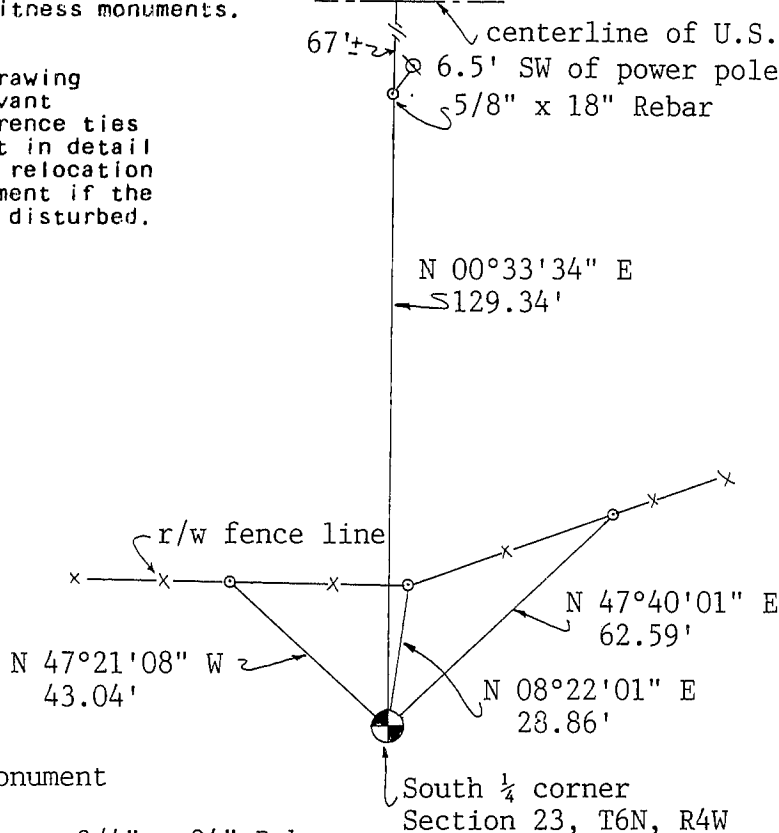


Scale 1"=40'

Grid Bearings

● Set aluminum monument

○ Reference ties are 3/4" x 24" Rebars



84

(e) Describe any material discrepancy between the location of the corner as restored or reestablished and the location of that corner as previously restored or reestablished by distance and direction. Show the discrepancy on the plan view drawing under (d), above. Show the distances between the corner as previously restored or reestablished and (1) the corner as restored or reestablished, and (2) to at least 2 of the witness monuments shown on the drawing in (d), above.

(f) Was the corner restored through acceptance of (1) an obliterated evidence location, or, (2) a found perpetuated location?

(g&h) Was the corner reestablished through lost corner proportionate methods? If so, show the method, including the directions and distances to other public land survey corners used as evidence or used for proportioning in determining the corner location?

No.

(i) I, John M. Halverson
(type or print name) certify that the corner location shown on this record was determined by me or under my direction and control and that this U.S. Public Land Survey Monument Record is correct and complete to the best of my knowledge and belief.

John M. Halverson
Signature

11/13/92
Date

