

U.S. PUBLIC LAND SURVEY MONUMENT RECORD - GRANT COUNTY, WI

Section 28, Town 6 North Range 4 West, Town of Mt. Hope (a)

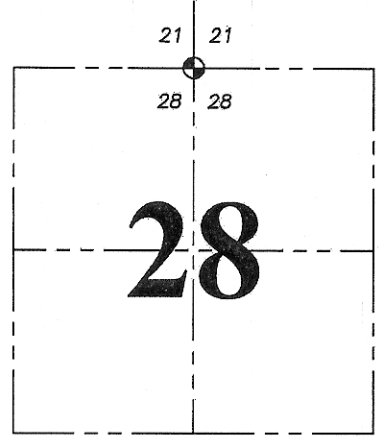
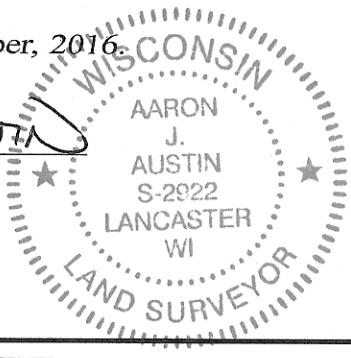
NOTE: This form is intended and designed to fulfill all requirements of the Wisconsin Administrative Code Chapter A-E 7.08, U.S. Public Land Survey Monument Record (3) (a) (b) (c) (d) (e) (f) (g) (h) (i).

CERTIFICATE: (i)

I, Aaron J. Austin, Wisconsin Professional Land Surveyor, do hereby certify that the corner location on this record was determined by me and/or under my direct supervision and that this U.S. Public Land Survey Monument Record is correct and complete to the best of my knowledge and belief.

Dated this 10th day of November, 2016.

Aaron J. Austin
Aaron J. Austin, S-2922



⊕ = CORNER LOCATION

Grant County Coordinates:
NAD 83 (2011)
Northing: 569,640.44
Easting: 780,516.94

HISTORY OF CORNER ESTABLISHMENT:

Original corner was set in 1833 by Harvey Parke.
John Halverson reset the corner and filed a Survey Monument Record for the corner.

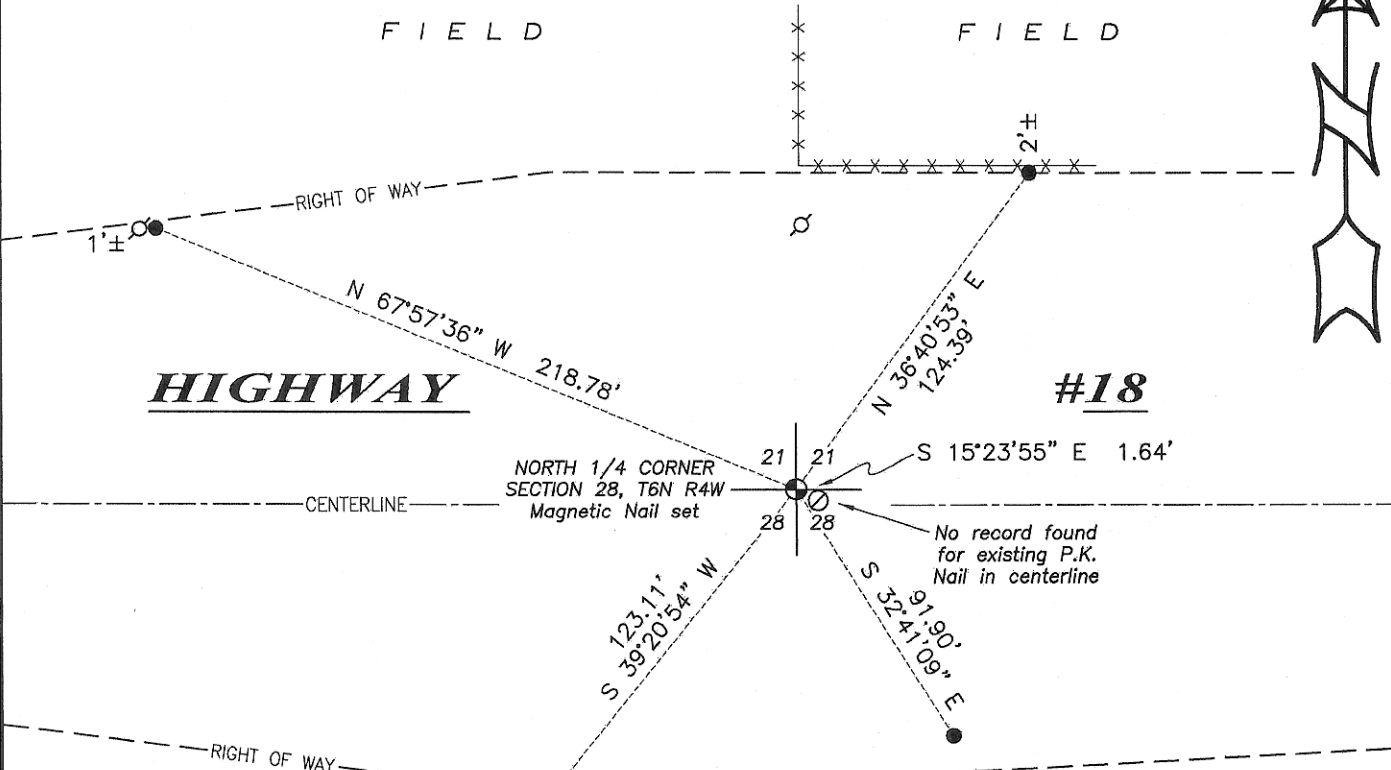
DESCRIPTION OF CORNER EVIDENCE FOUND: (b) (f) (g) (h)

The corner and witness monuments were not recovered. I reset the corner at the recorded distance of 5300.03 feet from the South 1/4 corner based upon Certified Survey Map No. 818 and at the recorded distance of 2641.87 feet based upon a previous survey by Keith Dalsing dated 3-29-2004 filed in Book 14, Page 89. I established 4 witness corners shown below and I verified the corner's location with G.P.S. and E.D.M. methods

DESCRIPTION OF CORNER AND WITNESS MONUMENTS, references and accessories used to perpetuate the original or re-established location of this corner. (c) (d) (e)

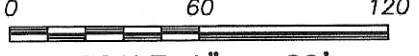
Witnesses to corner location Shane Austin.

SKETCH:



LEGEND

- ⊕ Section Corner—as designated
- 3/4" rebar found
- 3/4" x 18" rebar set
- ⊙ PK Nail found (no record)
- Existing R.O.W. post
- ♂ Existing utility pole
- x-x- Existing fence



SCALE 1" = 60'

U. S. PUBLIC LAND SURVEY MONUMENT RECORD

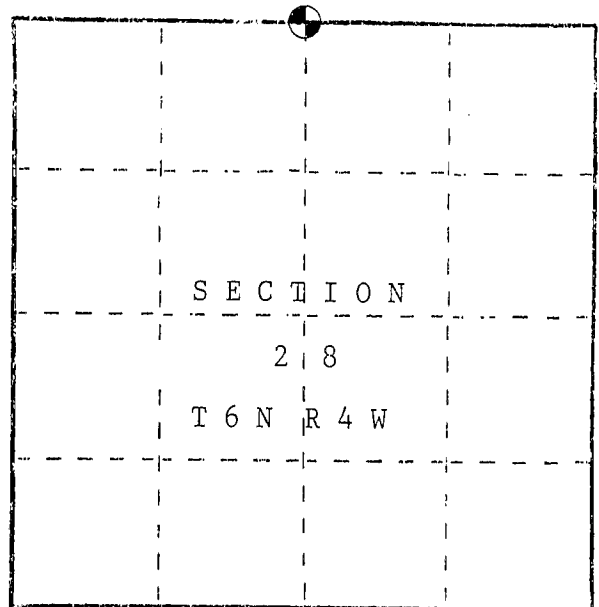
INSTRUCTIONS : This record shall show the location of the corner and shall include all of the following nine elements (a through i).

(a) Identify the corner by reference to the U.S. public land survey system.

○ = Corner monument restored.

North $\frac{1}{4}$ corner of Section 28,
Town 6 North, Range 4 West, Town of
Mount Hope, Grant County, WI

Set aluminum monument (DOT) 3" below
road surface as corner falls on solid
bedrock.

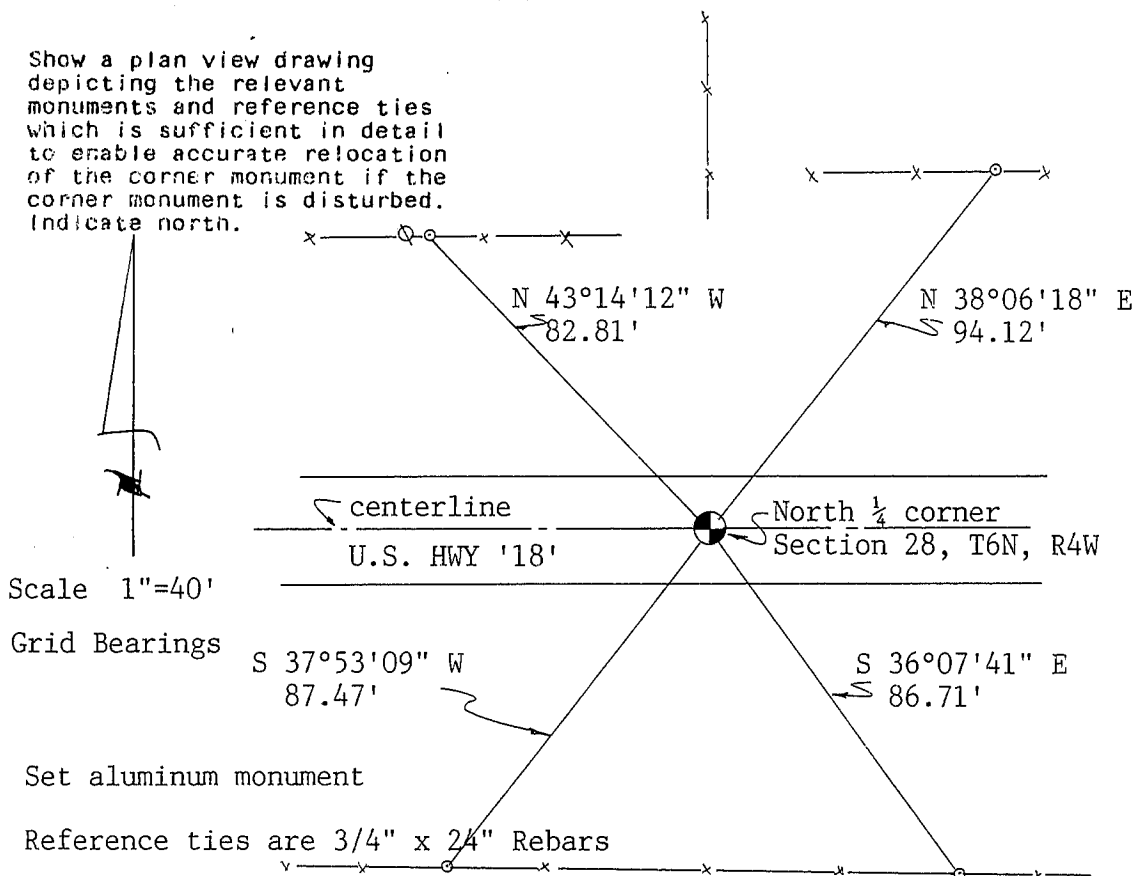


(b) Describe any record evidence, monument evidence, occupational evidence, testimonial evidence or any other material evidence you considered, and whether the monument was found or placed.

There is no record of this corner since the original government survey. I set an aluminum monument in the centerline of U.S. HWY '18' and in line with an occupation fence North.

(c) In the plan view drawing below, provide reference ties to at least 4 witness monuments, or, if the location is within a municipality, to at least 2 witness monuments. (Witness monuments shall be made of concrete, natural stone, iron or other equally durable material.) Describe witness monuments.

(d) Show a plan view drawing depicting the relevant monuments and reference ties which is sufficient in detail to enable accurate relocation of the corner monument if the corner monument is disturbed. Indicate north.



(e) Describe any material discrepancy between the location of the corner as restored or reestablished and the location of that corner as previously restored or reestablished by distance and direction. Show the discrepancy on the plan view drawing under (d), above. Show the distances between the corner as previously restored or reestablished and (1) the corner as restored or reestablished, and (2) to at least 2 of the witness monuments shown on the drawing in (d), above.

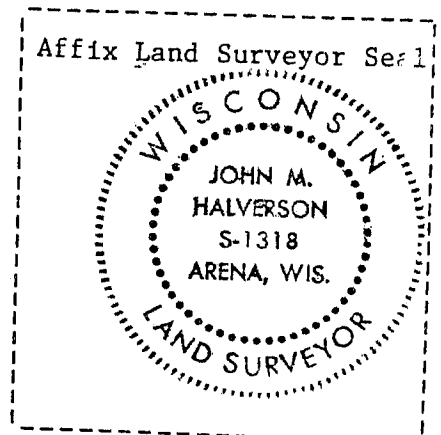
(f) Was the corner restored through acceptance of (1) an obliterated evidence location, or, (2) a found perpetuated location?

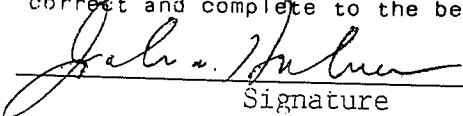
(g&h) Was the corner reestablished through lost corner proportionate methods? If so, show the method, including the directions and distances to other public land survey corners used as evidence or used for proportioning in determining the corner location?

No.

John M. Halverson

(i) I, John M. Halverson
(type or print name) certify that the corner location shown on this record was determined by me or under my direction and control and that this U.S. Public Land Survey Monument Record is correct and complete to the best of my knowledge and belief.




Signature

11/13/92

Date