

# U.S. PUBLIC LAND SURVEY MONUMENT RECORD

Section 22, Town 6 North Range 4 West, Town of Mount Hope, Grant County, Wisconsin

## CERTIFICATE

I, Larry L. Austin, do hereby certify that the corner location on this record was determined by me and/or under my direct supervision and that this U.S. public land survey monument record is correct and complete to the best of my knowledge and belief.

*Larry L. Austin*  
Larry L. Austin, S-1903



● = CORNER LOCATION

## HISTORY OF CORNER

Corner was originally set in 1833 by Parke. In 1992 Halverson set and tied the corner. No other record of the corner was found.

## CORNER EVIDENCE FOUND

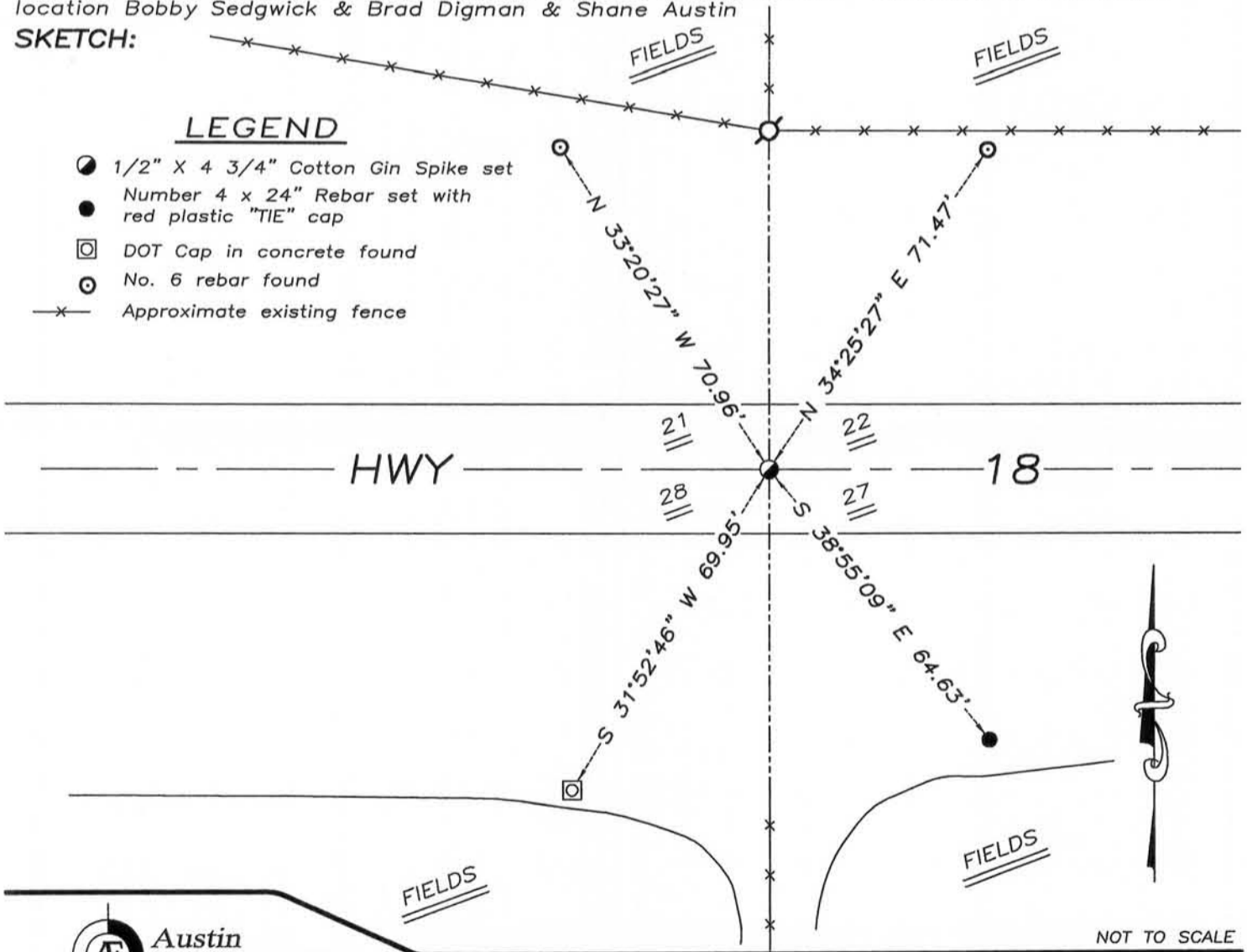
I reset the corner based on Halverson's location and set new ties as shown hereon. Verified it's location using EDM & GPS methods.

DESCRIPTION OF CORNER AND WITNESS MONUMENTS, references and accessories used to perpetuate the original or re-established location of this corner. Witnesses to monument location Bobby Sedgwick & Brad Digman & Shane Austin

## SKETCH:

### LEGEND

- 1/2" X 4 3/4" Cotton Gin Spike set
- Number 4 x 24" Rebar set with red plastic "TIE" cap
- DOT Cap in concrete found
- No. 6 rebar found
- x— Approximate existing fence



NOT TO SCALE

**Austin Engineering LLC**  
austinengineeringllc.com  
4211 HWY 81 E, LANCASTER, WI 53813  
PHONE: 608-723-6363 FAX: 608-723-6702

JOB NUMBER 10S080-BEILER  
FIELDBOOK: TDSR, 29-11  
G:\T7NR4W\133  
H:\TIE\T6NR4W\87

DRAWN BY: SW AUSTIN  
APPROVED: LL AUSTIN

87

MAY 23 2011

SEP 17 1993

U. S. PUBLIC LAND SURVEY MONUMENT RECORD

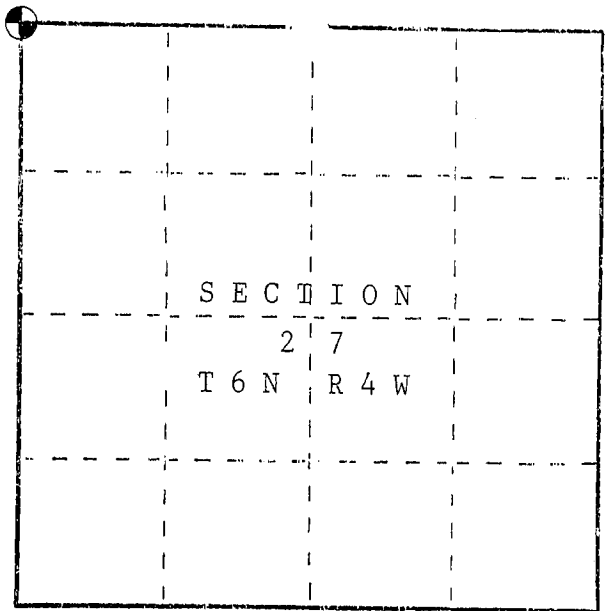
INSTRUCTIONS: This record shall show the location of the corner and shall include all of the following nine elements (a through i).

(a) Identify the corner by reference to the U.S. public land survey system.

○ = Corner monument restored.

Northwest corner of Section 27, Town 6 North, Range 4 West, Town of Mount Hope, Grant County, WI

Set aluminum monument (DOT) below pavement

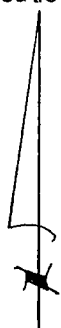


(b) Describe any record evidence, monument evidence, occupational evidence, testimonial evidence or any other material evidence you considered, and whether the monument was found or placed.

There is no record of this corner since the original government survey. I located the Northwest corner and occupation change at the West 1/4 corner of Section 22 as well as occupation at the midpoint of the West line of the NW 1/4 of Section 22. I also located the West 1/4 corner of Section 27 and occupation at the midpoint of the West line of the NW 1/4 of Section 27. I set an aluminum monument in the centerline of U.S. HWY '18' in line with occupation lines North and South. This location fit all existing occupation lines within 2 feet.

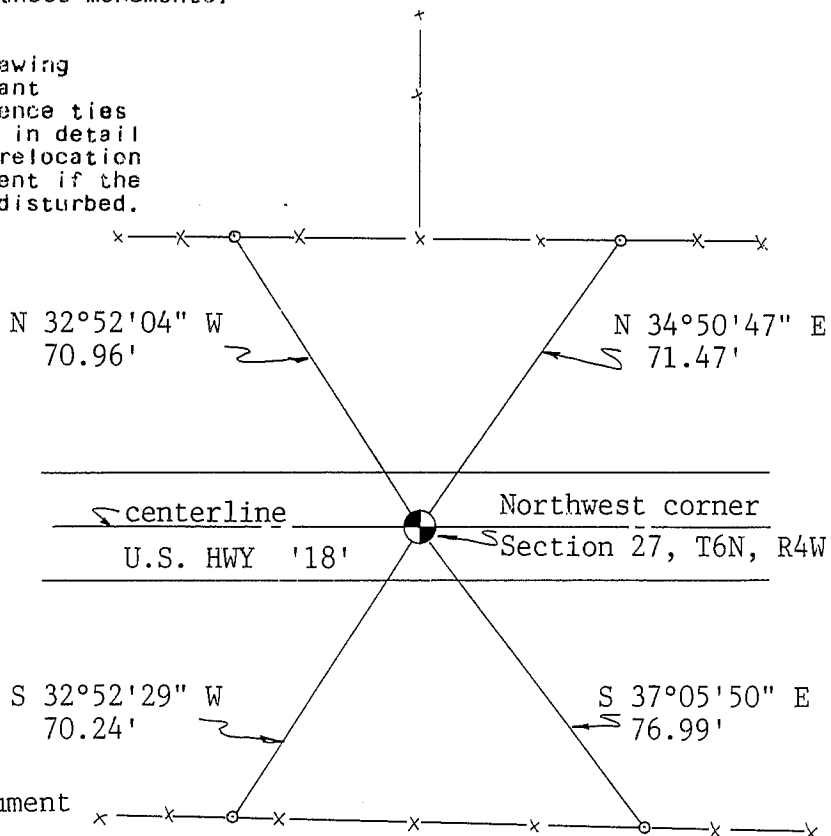
(c) In the plan view drawing below, provide reference ties to at least 4 witness monuments, or, if the location is within a municipality, to at least 2 witness monuments. (Witness monuments shall be made of concrete, natural stone, iron or other equally durable material.) Describe witness monuments.

(d) Show a plan view drawing depicting the relevant monuments and reference ties which is sufficient in detail to enable accurate relocation of the corner monument if the corner monument is disturbed. Indicate north.



Scale 1"=40'

Grid Bearings



● Set aluminum monument

○ Reference ties are 3/4" x 24" Rebars

(e) Describe any material discrepancy between the location of the corner as restored or reestablished and the location of that corner as previously restored or reestablished by distance and direction. Show the discrepancy on the plan view drawing under (d), above. Show the distances between the corner as previously restored or reestablished and (1) the corner as restored or reestablished, and (2) to at least 2 of the witness monuments shown on the drawing in (d), above.

---

(f) Was the corner restored through acceptance of (1) an obliterated evidence location, or, (2) a found perpetuated location?

---

(g&h) Was the corner reestablished through lost corner proportionate methods? If so, show the method, including the directions and distances to other public land survey corners used as evidence or used for proportioning in determining the corner location?

No.

(i) I, John M. Halverson  
(type or print name) certify that the corner location shown on this record was determined by me or under my direction and control and that this U.S. Public Land Survey Monument Record is correct and complete to the best of my knowledge and belief.

John M. Halverson  
Signature

11/13/92  
Date

