

**U.S. PUBLIC LAND SURVEY MONUMENT RECORD – GRANT COUNTY, WI**

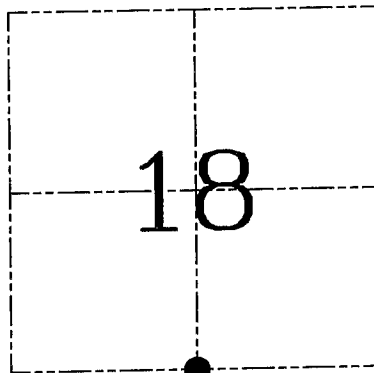
**Section 18, Town 6 North Range 4 West, Town of Mount Hope**

CERTIFICATE

I, Larry L. Austin, do hereby certify that the corner location on this record was determined by me and/or under my direct supervision and that this U.S. public land survey monument record is correct and complete to the best of my knowledge and belief.

Dated this 6th day of December, 2005

*Larry L. Austin*  
 Larry L. Austin  
 SURVEYOR  
 WI



● = CORNER LOCATION

HISTORY OF CORNER ESTABLISHMENT

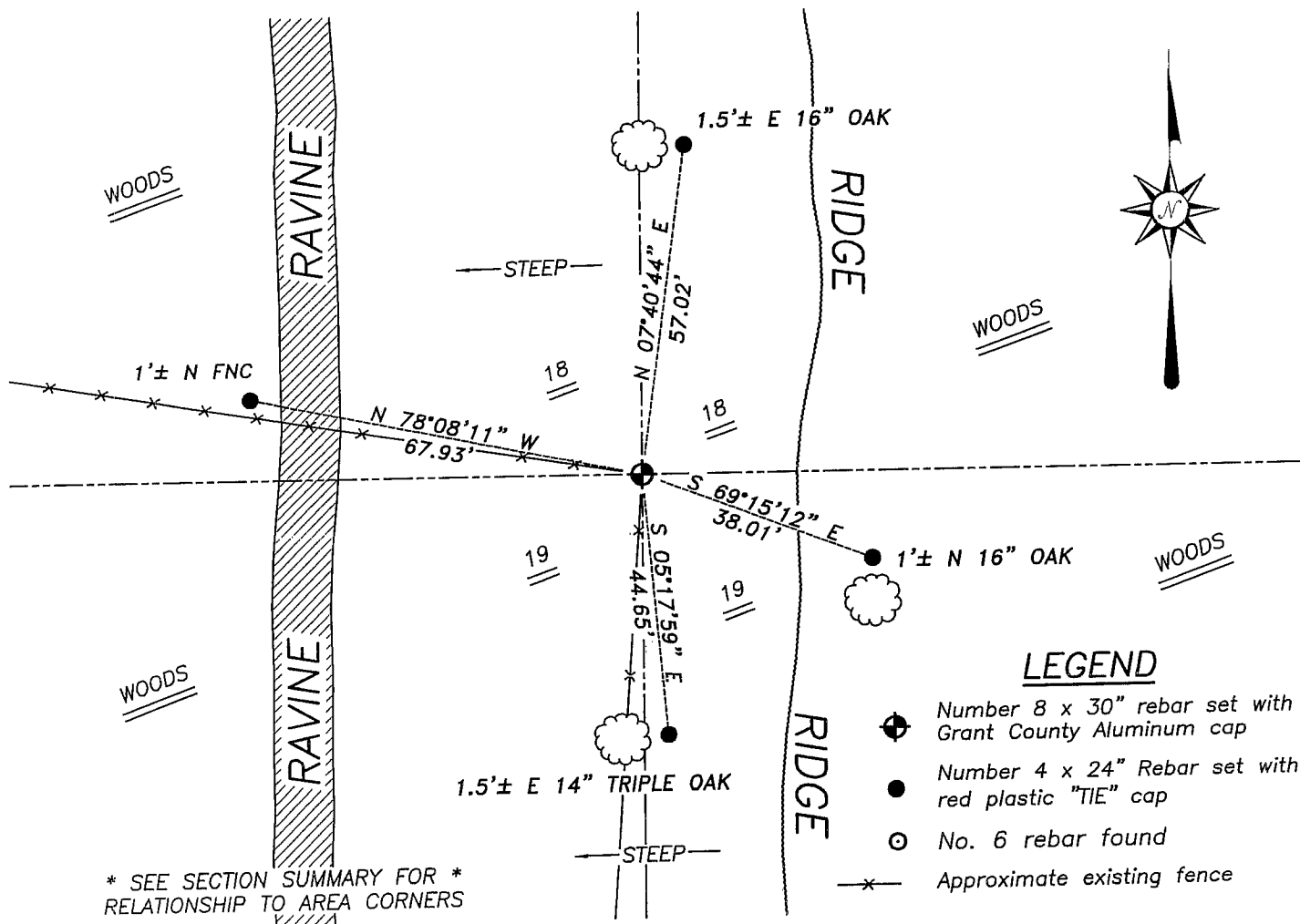
Corner was originally set in 1833 by Parke. In 1854 Clark measured to the corner. In 1889 Gould found a stone monument. No other record of the corner was found.

DESCRIPTION OF CORNER EVIDENCE FOUND

I found an existing fence corner that a local land owner states has never changed. The land owner has never known of a stone monument. I accepted the occupied fence corner after it fit well with other corners along the South line. Verified this location using EDM & GPS methods.

DESCRIPTION OF CORNER AND WITNESS MONUMENTS, references and accessories used to perpetuate the original or re-established location of this corner. Witnesses to corner location Brad Digman & Shane Austin.

**SKETCH:**

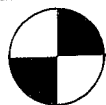


\* SEE SECTION SUMMARY FOR \*  
 RELATIONSHIP TO AREA CORNERS

LEGEND

- Number 8 x 30" rebar set with Grant County Aluminum cap
- Number 4 x 24" Rebar set with red plastic "TIE" cap
- No. 6 rebar found
- x— Approximate existing fence

SKETCH NOT TO SCALE



**Austin Engineering LLC**

4211 HWY 81 E, LANCASTER, WI 53813  
 PHONE 608-723-6363 FAX 608-723-6702

JOB NUMBER 05S207  
 FIELDBOOK: 2517  
 G:\T6NR5W\13  
 H:\TIE\T6NR4W\72

DRAWN BY: ML DIGMAN  
 APPROVED: LL AUSTIN