

REC'D AUG 26 1998

Survey Monument Record

CORNER NO. _____

SECTION 16

TOWN 6N

RANGE 4W

TYPE OF MONUMENT 1" IRON ROD FOUND

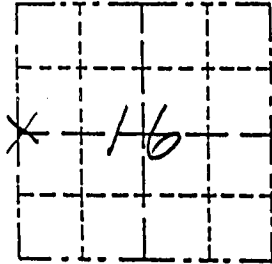
STATE PLANE COORDINATES: N _____
E _____

ELEVATION — M.S.L. DATUM: _____

THETA ANGLE: _____

FIELD BOOK: _____

PAGE _____



LOCATION
(Indicated by "X")

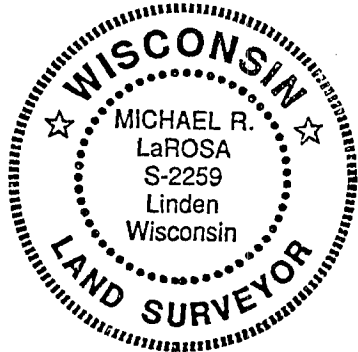
- FOUND PERPETUATED LOCATION
- OBLITERATED EVIDENCE LOCATION
- LOST CORNER (RESTORED BY PROPORTIONATE METHODS)

BASIS FOR MONUMENT LOCATION

(Use reverse side if necessary)

Show info such as: History of corner, with reference to Vol. and pg., dates, surveyor; exact description of monument replaced; if location computed, by taped or EDM traverse; landowner, remarks, etc.

A 1" Iron Rod was found at the W 1/4 corner of 16. This location fit a Survey by Laurence Schmit, dated 10/25/78 & revised 1/16/1980. Ties were set as shown.



CERTIFIED CORRECT TO THE BEST OF MY KNOWLEDGE AND BELIEF

Michael R. LaRosa
Registered Land Surveyor

DATE: 6/26/1998

TIE SKETCH

Show at least (4) ties and monument

