

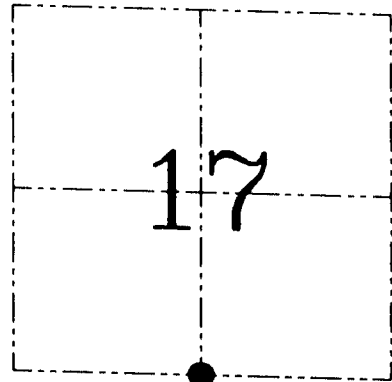
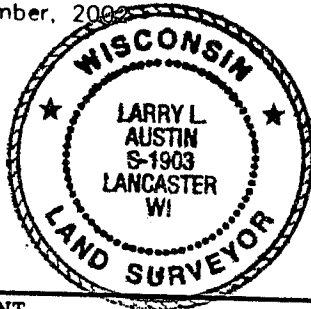
**U.S. PUBLIC LAND SURVEY MONUMENT RECORD - GRANT COUNTY, WI**  
**Section 17, Town 6 North Range 4 West, Town of Mount Hope**

**CERTIFICATE**

I, Larry L. Austin, do hereby certify that the corner location on this record was determined by me and/or under my direct supervision and that this U.S. public land survey monument record is correct and complete to the best of my knowledge and belief.

Dated this 22nd day of September, 2002

*Larry L. Austin*  
 Larry L. Austin S-1903



● = CORNER LOCATION

**HISTORY OF CORNER ESTABLISHMENT**

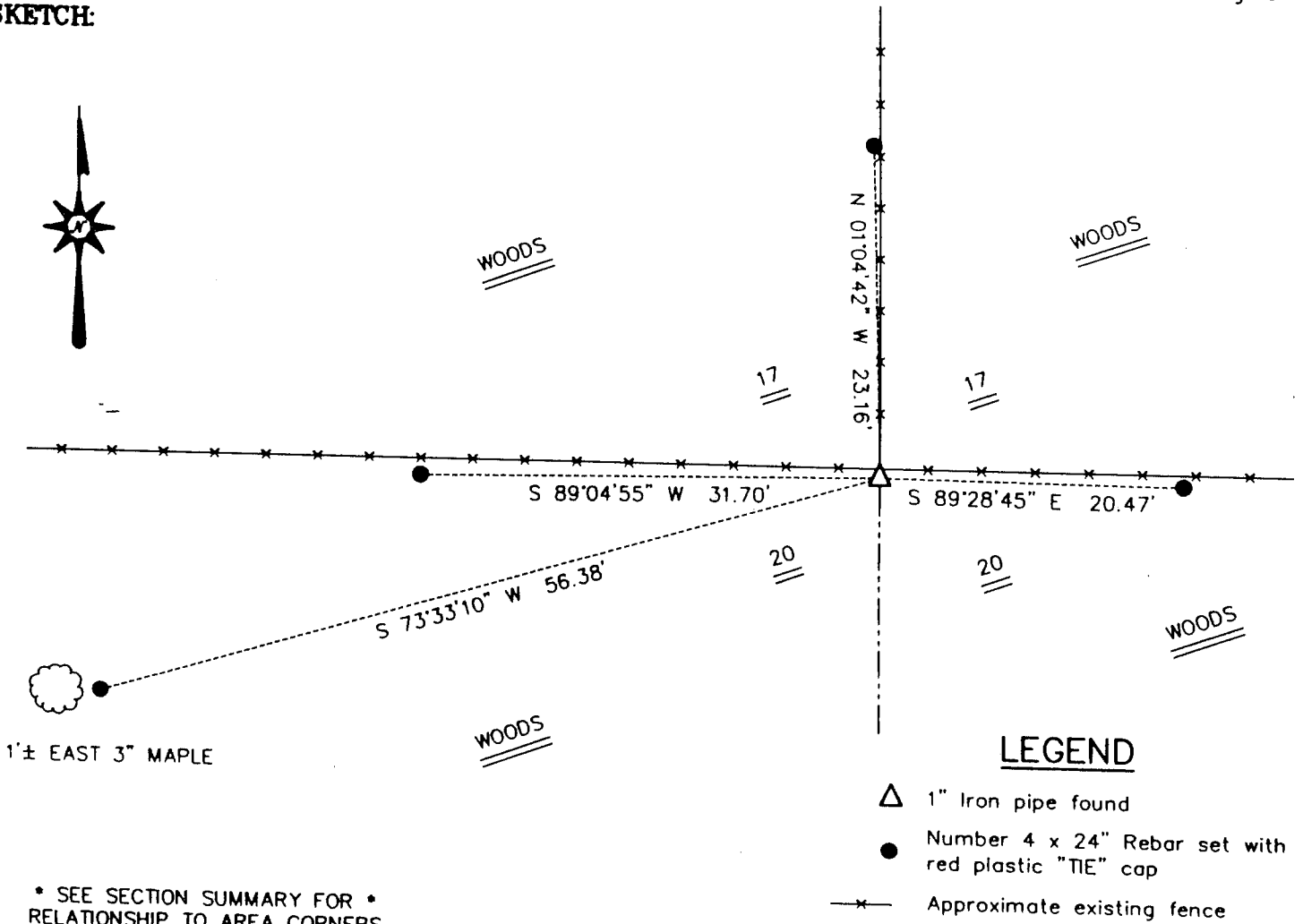
Corner was originally set in 1833 by Harvey Parke. In 1881 J.C. Scott found both original bearing trees. In 1985 Mathew Janiak tied to the corner and set a 1" Iron pipe.

**DESCRIPTION OF CORNER EVIDENCE FOUND**

I found a 1" iron pipe at an occupied fence corner and accepted it's location after an EDM & GPS traverse of the area.

**DESCRIPTION OF CORNER AND WITNESS MONUMENTS**, references and accessories used to perpetuate the original or re-established location of this corner. Witnesses to corner location Bobby Sedgwick & Shane Austin & Brad Digman

**SKETCH:**



**LEGEND**

- △ 1" Iron pipe found
- Number 4 x 24" Rebar set with red plastic "TIE" cap
- x— Approximate existing fence

\* SEE SECTION SUMMARY FOR \*  
 RELATIONSHIP TO AREA CORNERS

SKETCH NOT TO SCALE

**AUSTIN ENGINEERING, LLC**

4211 HWY 81 EAST, LANCASTER, WI 53813  
 PHONE 608-723-6363 FAX 608-723-6702

FIELDBOOK: SDR33, 2220  
 G: \T6NR5W\13  
 C: \SWA\TIE\T6NR4W\70  
 CREW: BS-SB-SA-BD

DRAWN BY: SW AUSTIN  
 APPROVED: LL AUSTIN

**CORNER NUMBER 70**

Mt. Hope Twp.

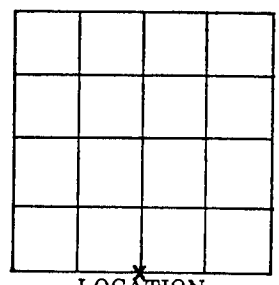
# GRANT COUNTY Government Land Corner Certificate

TYPE OF MONUMENT: 1" IRON PIPE ELEVATION — M.S.L. DATUM: \_\_\_\_\_  
 STATE PLANE COORDINATES: N \_\_\_\_\_ THETA ANGLE: \_\_\_\_\_  
 Wis. South Zone E \_\_\_\_\_ FIELD BOOK: GRANT 1 PAGE 10

## Basis for Monument Location

(Use reverse side if necessary.  
 Show info such as: History of corner, with reference to Vol. and page,  
 dates, surveyor; exact description of monument found; if location  
 computed, by taped or EDM traverse; landowner remarks, witnesses,  
 etc.)

Located an 1" diameter iron pipe at the occupied corner. This was the only available evidence of the corner and I accepted it as true.



LOCATION  
(Indicated by 'X')

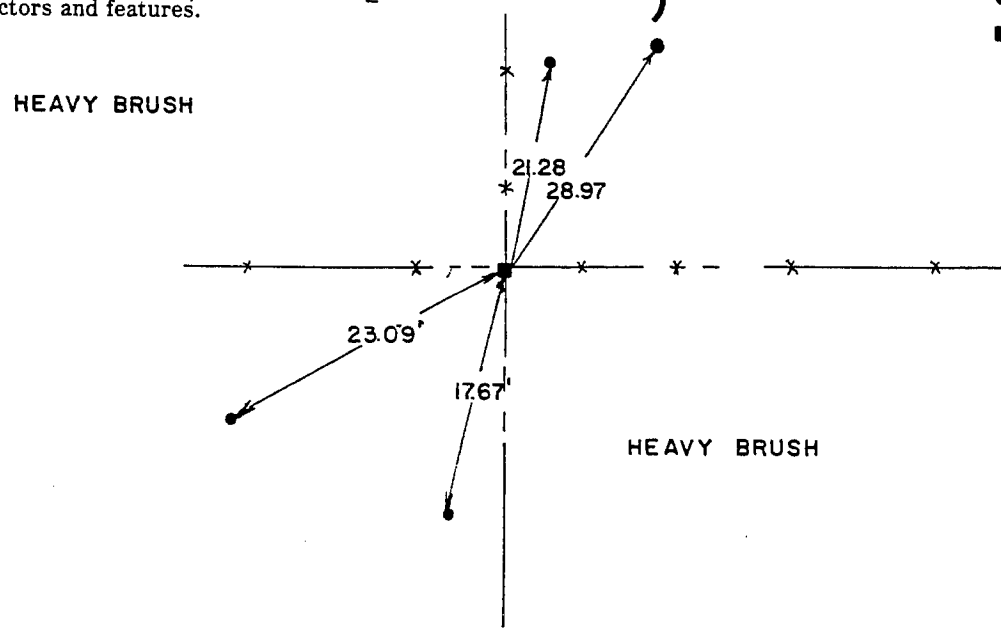
~~GRID~~  
~~VOL. & PAGE~~ or TOWN MT. HOPE  
 SECTION 17  
 TOWN 6 N  
 RANGE 4 W  
 DRAFTED BY SMW  
 FIELD CREW MATTHEW J. JANIAK  
SEAN M. WALSH

GRANT COUNTY CLERK  
**RECEIVED**

SEP 9 1985

## TIE SKETCH

(Show at least four ties. Also, fence lines,  $\phi$  of roads, and any other helpful factors and features.)



- LEGEND**
- 3/4" IRON ROD
  - 1" IRON PIPE



CORNER MAINTENANCE INFO SEAL:


CERTIFIED CORRECT:

*Matthew J. Janiak*  
 Registered Land Surveyor  
 DATE: 9-5-85