

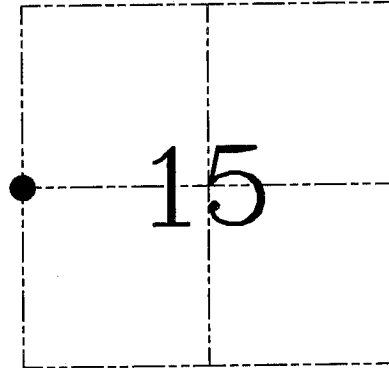
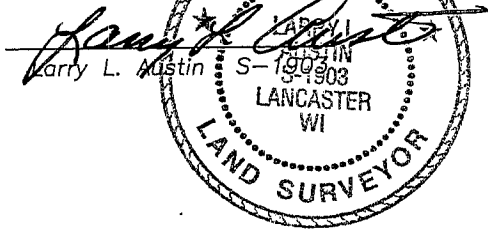
U.S. PUBLIC LAND SURVEY MONUMENT RECORD – GRANT COUNTY, WI

Section 15, Town 6 North Range 4 West, Town of Mount Hope

CERTIFICATE

I, Larry L. Austin, do hereby certify that the corner location on this record was determined by me and/or under my direct supervision and that this U.S. public land survey monument record is correct and complete to the best of my knowledge and belief.

Dated this 29th day of December, 2005



● = CORNER LOCATION

HISTORY OF CORNER ESTABLISHMENT

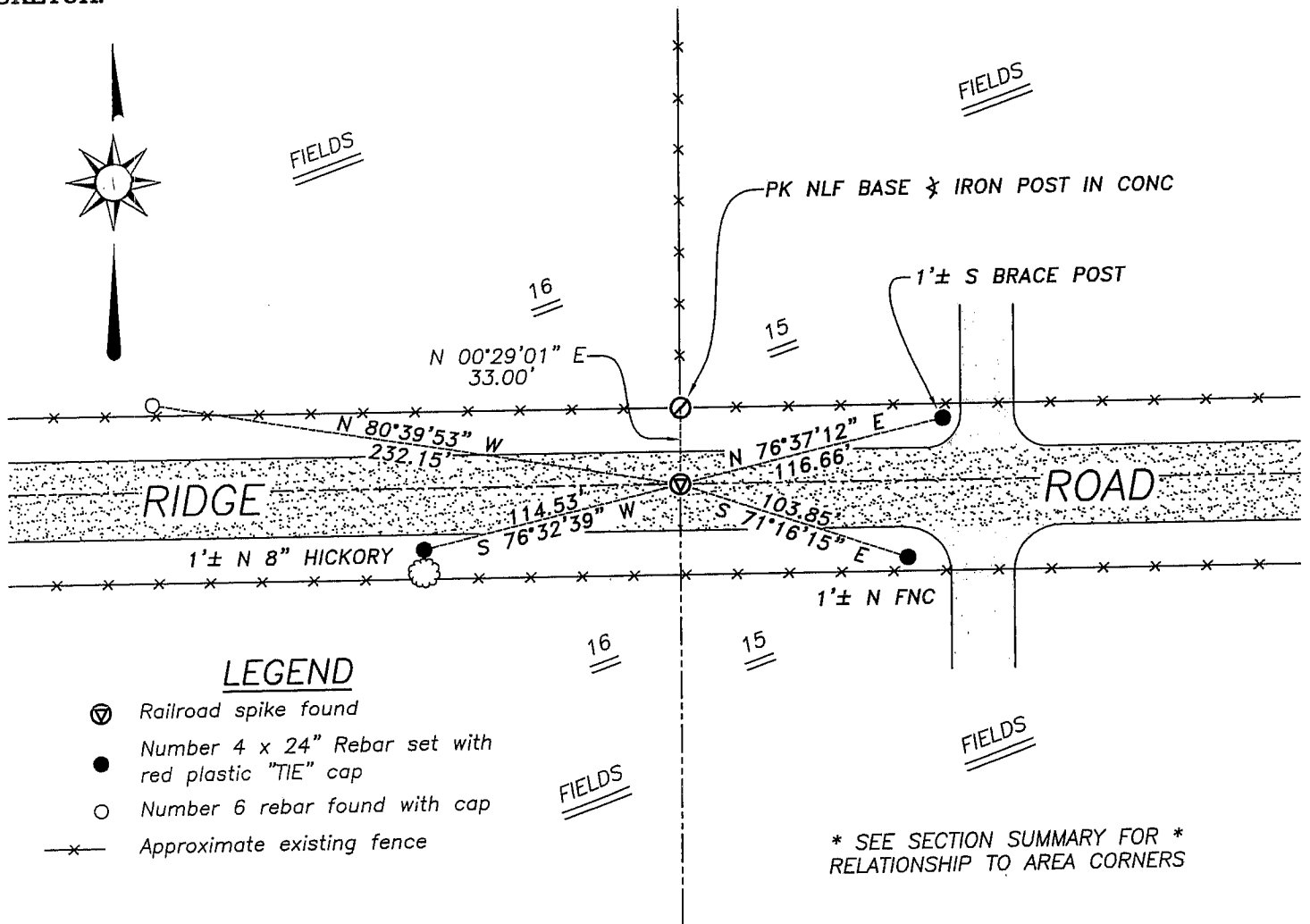
Corner was originally set in 1833 by Harvey Parke. In 1978 Schmit set a railroad spike at this location. No other record of the corner was found.

DESCRIPTION OF CORNER EVIDENCE FOUND

I found the existing railroad spike and accepted it's location after an EDM & GPS traverse of the area.

DESCRIPTION OF CORNER AND WITNESS MONUMENTS, references and accessories used to perpetuate the original or re-established location of this corner. Witnesses to corner location Bobby Sedgwick & Brad Digman & Shane Austin

SKETCH:



LEGEND

- ⊙ Railroad spike found
- Number 4 x 24" Rebar set with red plastic "TIE" cap
- Number 6 rebar found with cap
- x— Approximate existing fence

* SEE SECTION SUMMARY FOR *
RELATIONSHIP TO AREA CORNERS

SKETCH NOT TO SCALE



Austin Engineering LLC

4211 HWY 81 E, LANCASTER, WI 53813
PHONE 608-723-6363 FAX 608-723-6702

JOB NUMBER: 05S298
FIELDBOOK: TDSR, 2516
G:\T7NR4W\133
H:\TIE\T6NR4W\57

DRAWN BY: ML DIGMAN
APPROVED: LL AUSTIN

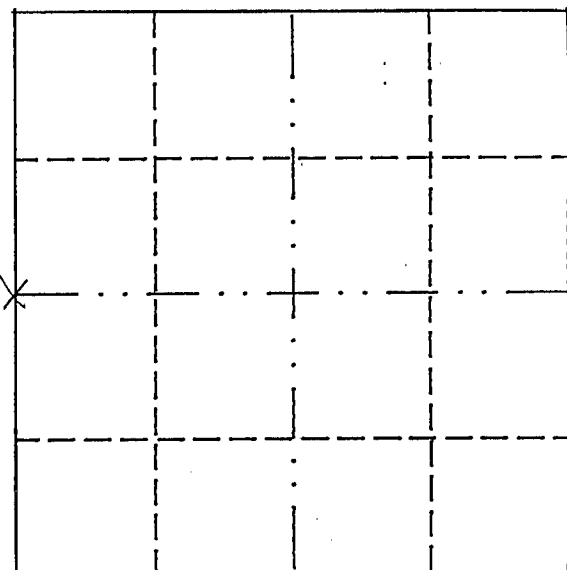
U.S. PUBLIC LAND SURVEY MONUMENT RECORD

THIS RECORD SHALL SHOW THE LOCATION OF THE CORNER AND SHALL INCLUDE ALL OF THE FOLLOWING NINE ELEMENTS (A THROUGH I).

(a) Identify the corner by reference to the U.S. public land survey system.

W 1/4 CORNER OF SECT 15, T6N, R4W

FEB 6 1990



= corner monument restored.

(b) Describe any record evidence, monument evidence, occupational evidence, testimonial evidence or any other material evidence you considered, and whether the monument was found or placed.

RECORD EVIDENCE IS COOPER SURVEY DATED 8/1/88 & VAN VALKENBERG SURVEY DATED 10/25/78
MONUMENT EVIDENCE IS RAILROAD SPIKE BURIED 6" IN E OF TWP ROAD
OCCUPATIONAL EVIDENCE IS ROAD & FENCELINE N OF CORNER

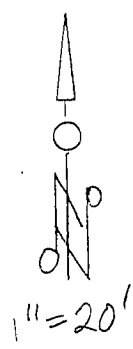
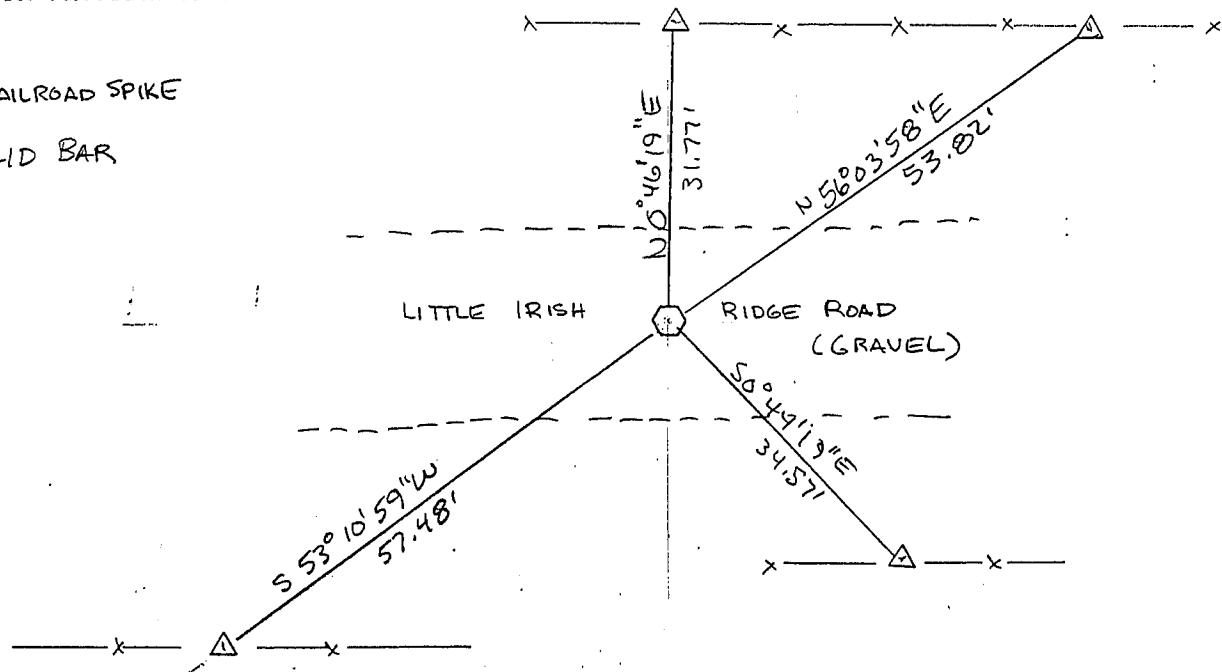
(c) In the plan view drawing below, provide reference ties to at least four witness monuments, or, if the location is within a municipality, to at least two witness monuments. (Witness monuments shall be made of concrete, natural stone, iron or other equally durable material.) Describe witness monuments.

(d) Show a plan view drawing depicting the relevant monuments and reference ties which is sufficient in detail to enable accurate relocation of the corner monument if the corner monument is disturbed. Indicate north.

○ FOUND RAILROAD SPIKE

△ 3/4" SOLID BAR

— X —



(e) Describe any material discrepancy between the location of the corner as restored or reestablished and the location of that corner as previously restored or reestablished by distance and direction. Show the discrepancy on the view drawing under (d), above. Show the distances between the corner as previously restored or reestablished and (1) the corner as restored or reestablished, and (2) to at least two of the witness monuments shown on the drawing in (d), above.

NONE

(f) Was the corner restored through acceptance of (1) an obliterated evidence location, or (2) a found perpetuated location?

(2)

(g) & (h) Was the corner reestablished through lost corner proportionate methods? If so, show the method, including the directions and distances to other public land survey corners used as evidence or used for proportioning in determining the corner location?

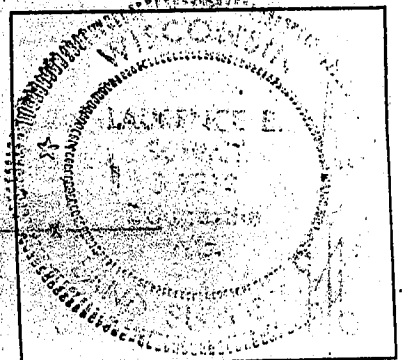
NO - ACCEPTED EX CORNER LOCATION OF RECORD

(i) LAURENCE E. SCHMIT

(type or print name) certify that the corner location shown on this record was determined by me or under my direction and control and that this U.S. Public Land Survey Monument Record is correct and complete to the best of my knowledge and belief.

Laurence E. Schmit
Signature

12/31/89
Date



affix land surveyor seal