

# GRANT COUNTY

## Survey Monument Record

CORNER NO. 59  
 SECTION 13  
 TOWN 6 N  
 RANGE 4 W

TYPE OF MONUMENT 1" Round Iron Pipe

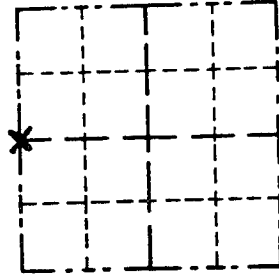
STATE PLANE COORDINATES: N \_\_\_\_\_  
E \_\_\_\_\_

ELEVATION — M.S.L. DATUM: \_\_\_\_\_

THETA ANGLE: \_\_\_\_\_

FIELD BOOK: \_\_\_\_\_

PAGE \_\_\_\_\_



LOCATION  
(Indicated by "X")

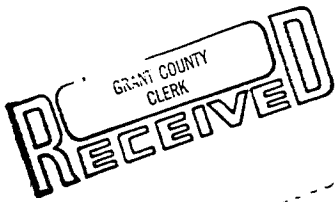
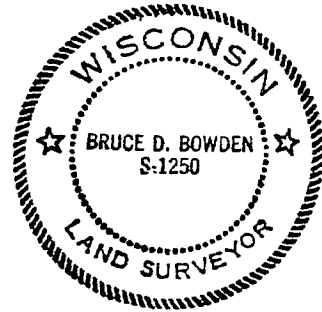
### BASIS FOR MONUMENT LOCATION

(Use reverse side if necessary)

Show info such as: History of corner, with reference to Vol. and pg., dates, surveyor; exact description of monument replaced; if location computed, by taped or EDM traverse; landowner, remarks, etc.

SEAL:

Accepted 1" iron pipe found at corner as recorded on a survey by Laurence E. Schmit dated October 4, 1978.



MAR 12 1985

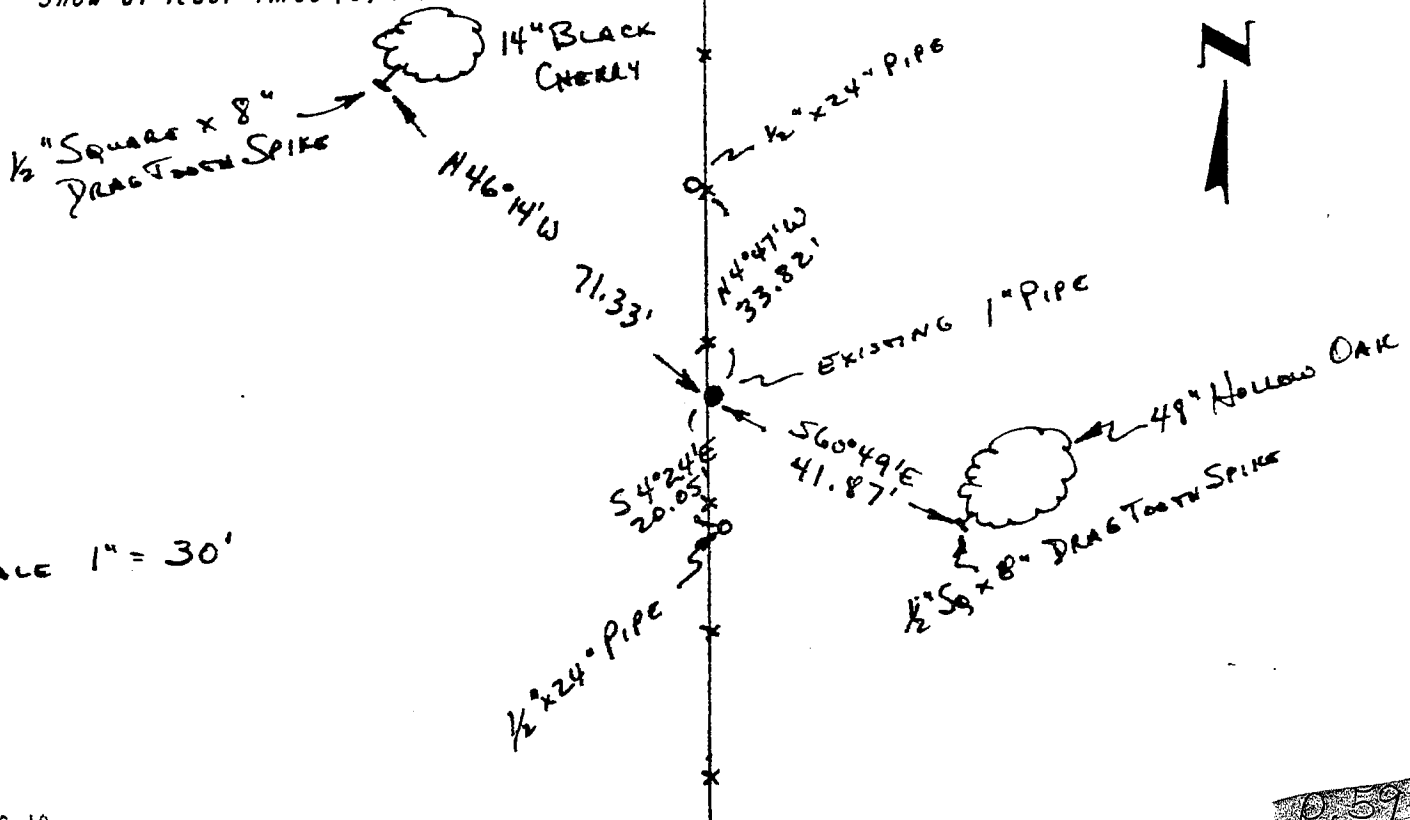
CERTIFIED CORRECT

*Bruce Bowden*  
Registered Land Surveyor

DATE: March 11, 1985

### TIE SKETCH

Show at least three (3) ties and monument

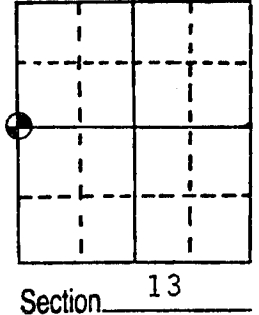


SCALE 1" = 30'

# U.S. PUBLIC LAND SURVEY MONUMENT RECORD

Note: This form is intended and designed to fulfill all requirements of Wisconsin Administrative Code, Chapter A-E 5.02, U.S. Public Land Survey Monument Record (3) (a) (b) (c) (d) (e) (f) (g) (h) (i). An additional sheet may be added if necessary to conform with said requirements.

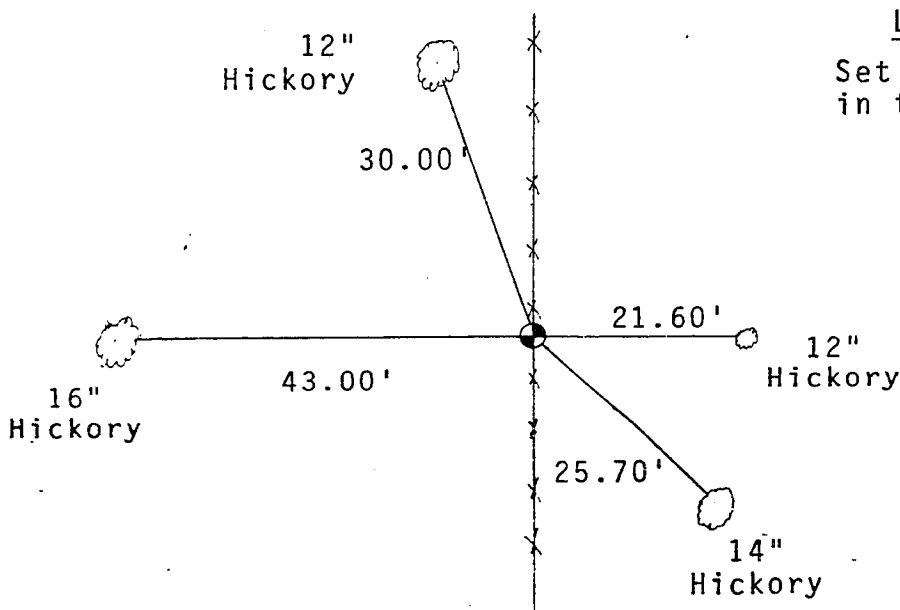
(a) Corner location: Township 6 North  
 Range 4 ~~East~~ West  
 Town/ ~~City/Village~~ Mount Hope  
 County Grant



(b) (f) (g) (h) Description of monument found at this corner and if it was accepted, state all evidence (material, testimonial, occupational, plats, records, other monuments) used as a basis for accepting. If not accepted or if nothing was found, state evidence used as basis for establishing location. If reestablished through lost corner proportionate methods, indicate all monuments, distances and directions used to establish.

Found 1" iron pipe. Accepted as being corner set by Laurence E. Schmit 10-4-78.

(c) (d) (e) Plan view of corner with ties to at least 4 witness monuments. If in disagreement with previously established corner, show the distances between the two corners and also indicate the ties to the disputed corner.



**LEGEND**  
 Set 60 penny spikes in trees.



Scale: 1" = 20'

(i) I, John M. HALVERSON  
 (type or print name) certify that the corner location on this record was determined by me or under my direction and control and that this U.S. Public Land Survey Monument Record is correct and complete to the best of my knowledge and belief.

Affix seal here

John M. Halverson Signature      August 1, 1983 Date