

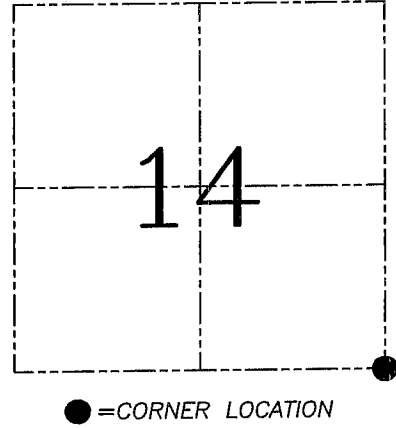
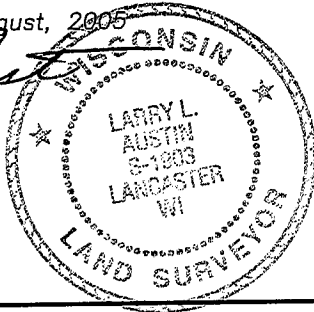
U.S. PUBLIC LAND SURVEY MONUMENT RECORD – GRANT COUNTY, WI
Section 14, Town 6 North Range 4 West, Town of Mount Hope

CERTIFICATE

I, Larry L. Austin, do hereby certify that the corner location on this record was determined by me and/or under my direct supervision and that this U.S. public land survey monument record is correct and complete to the best of my knowledge and belief.

Dated this 1st day of August, 2005

Larry L. Austin
 Larry L. Austin S-1903



HISTORY OF CORNER ESTABLISHMENT

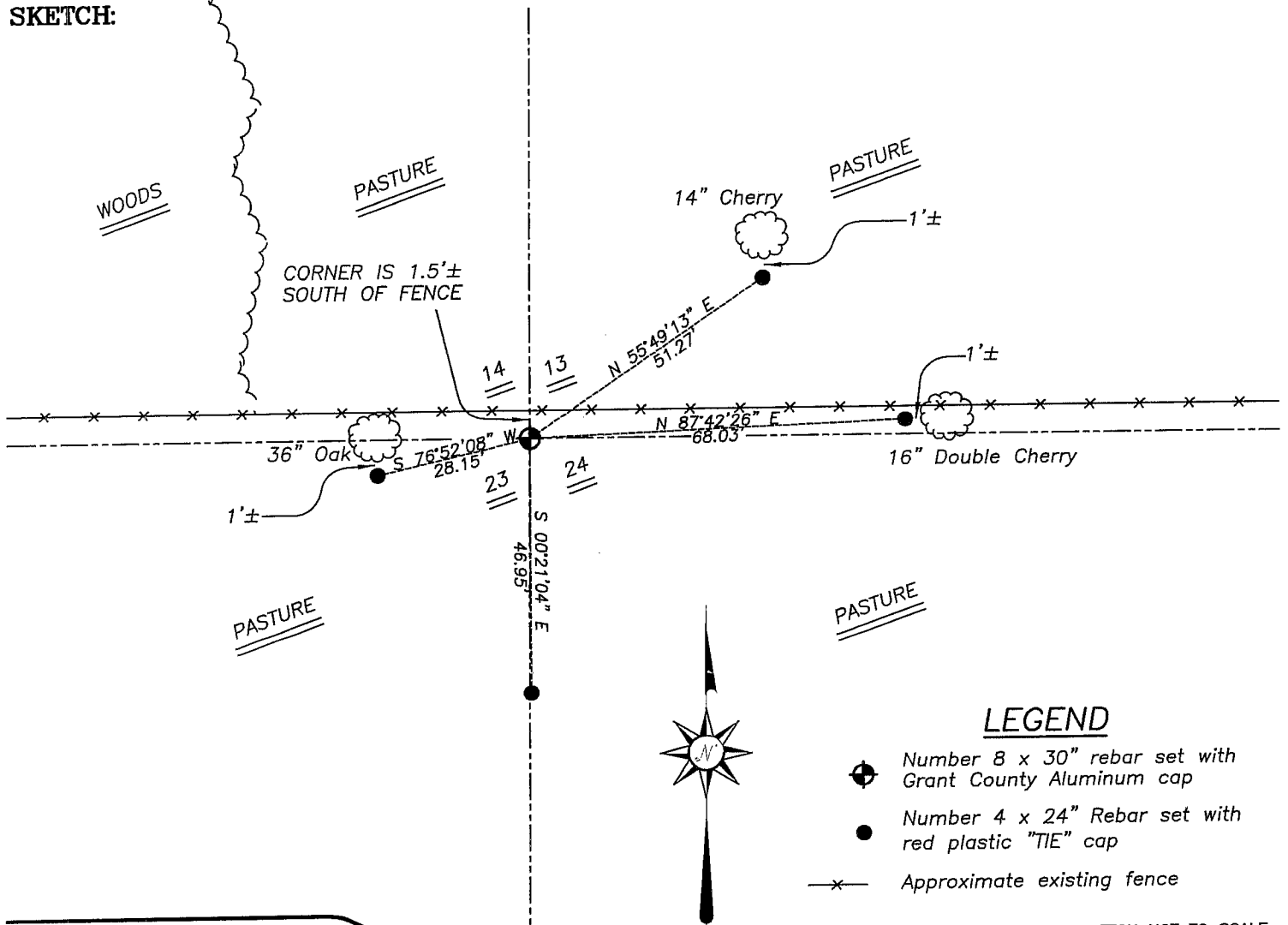
Corner was originally set in 1833 by Parke. In 1883 Scott set a stake at this location, both bearing trees were intact. No other record of the corner was found.

DESCRIPTION OF CORNER EVIDENCE FOUND

I set the corner proportionately between the East 1/4 of 14 and the East 1/4 of 23. This location was also verified proportionately between the occupied corners East and West of the corner. Verified this location using EDM & GPS methods.

DESCRIPTION OF CORNER AND WITNESS MONUMENTS, references and accessories used to perpetuate the original or re-established location of this corner. Witnesses to corner location Bobby Sedgwick & Brad Digman & Shane Austin

SKETCH:



SKETCH NOT TO SCALE

Austin Engineering LLC
 4211 HWY 81 E, LANCASTER, WI 53813
 PHONE 608-723-6363 FAX 608-723-6702

JOB NUMBER 05S114
 FIELDBOOK: TDSR, 2516
 G:\T6NR4W\14
 H:\TIE\T6NR4W\63

DRAWN BY: BJ HAZEN
 APPROVED: LL AUSTIN