

GRANT COUNTY

CERTIFIED U.S. PUBLIC LAND SURVEY MONUMENT RECORD

INSTRUCTIONS: THIS RECORD SHALL SHOW THE LOCATION OF THE CORNER AND SHALL INCLUDE ALL OF THE FOLLOWING ELEMENTS (A-1)

(A) IDENTIFY THE CORNER BY REFERENCE TO THE U.S. PUBLIC LAND SURVEY SYSTEM
SOUTH QUARTER CORNER SECTION 13, T6N, R4W

⊕ SET 3/4" X 18" IRON REBAR

WITNESSES TO CORNER LOCATION
 1) SEAN M. WALSH

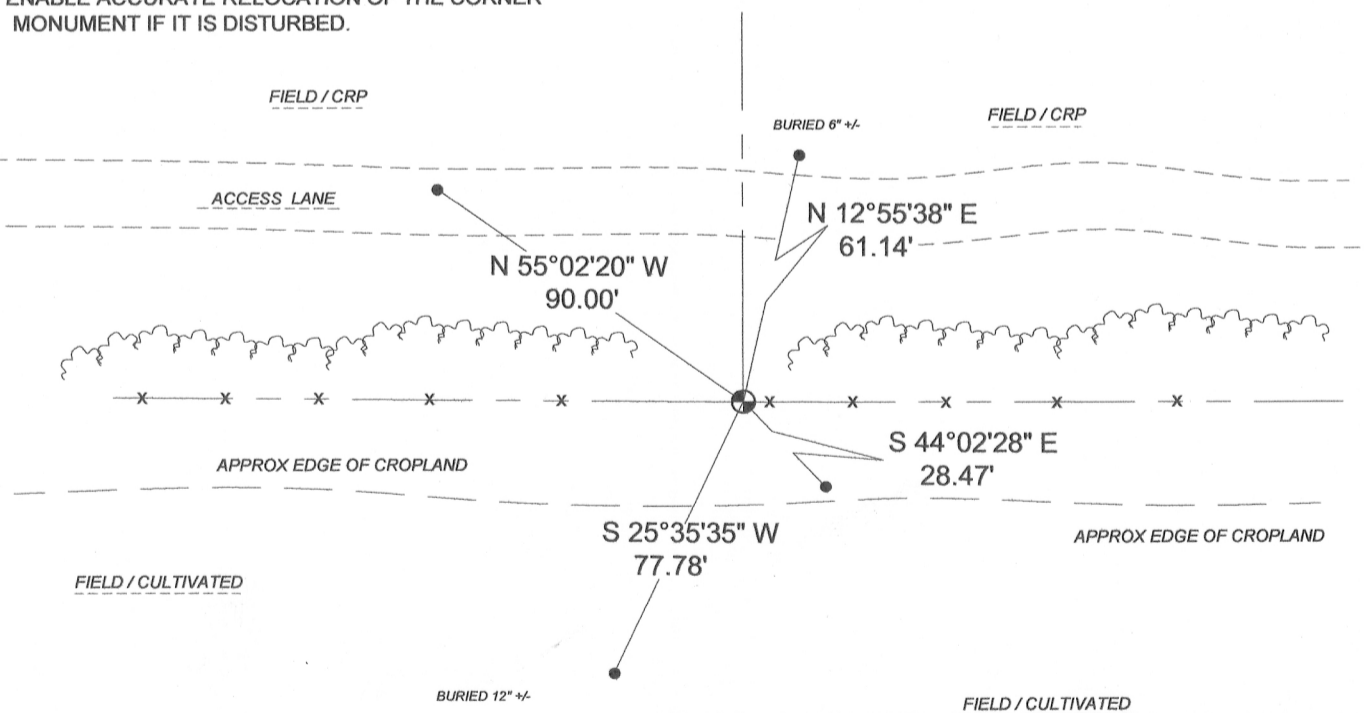
BASIS OF BEARINGS AND ORIENTAITON
 WISCRS GRANT COUNTY, NAD 83(2011)
 LOCALIZED TO HT. MOD STA. "MOUNT HOPE GPS"
 WITH NAD83 2011 ADJUSTMENT COORDINATE VALUES



SOUTH QUARTER CORNER
SECTION 13, TOWN 6 NORTH, RANGE 4 WEST
TOWN OF MOUNT HOPE, GRANT COUNTY, WISCONSIN

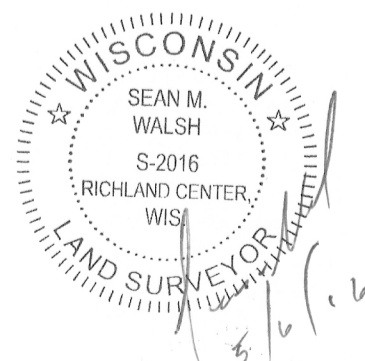
(C) IN THE PLAN VIEW DRAWING BELOW, PROVIDE REFERENCE TO AT LEAST 4 WITNESS MONUMENTS OR, IF THE LOCATION IS WITHIN A MUNICIPALITY, TO AT LEAST 2 WITNESS MONUMENTS. (WITNESS MONUMENTS SHALL BE MADE OF CONCRETE, NATURAL STONE, IRON OR OTHER EQUALLY DURABLE MATERIAL) DESCRIBE WITNESS MONUMENTS

(D) SHOW A PLAN VIEW DRAWING, DEPICTING THE RELEVANT MONUMENTS AND REFERENCE TIES, WHICH IS SUFFICIENTLY DETAILED TO ENABLE ACCURATE RELOCATION OF THE CORNER MONUMENT IF IT IS DISTURBED.



LEGEND

- ⊕ 3/4" x 18" rebar set
- 3/4" dia x 18" iron rebar set



GRANT COUNTY
CERTIFIED U.S. PUBLIC LAND SURVEY MONUMENT RECORD

RECOVERY PROCEDURES:

(E) A DESCRIPTION OF ANY RECORD EVIDENCE, MONUMENT EVIDENCE, OCCUPATIONAL EVIDENCE, TESTIMONIAL EVIDENCE OR ANY OTHER MATERIAL EVIDENCE CONSIDERED BY THE SURVEYOR, AND WHETHER THE MONUMENT WAS FOUND OR PLACED;

ON APRIL 21, 2016, IN CONJUNCTION WITH A PRIVATE SURVEY FOR DAVID O'BRIEN, LOCATED IN PART OF SECTION 13, I FOUND NO PHYSICAL EVIDENCE FOR THIS CORNER, OTHER THAN AN EAST - WEST FENCE. I FIND NO RECORD EVIDENCE OF THIS CORNER BEING USED SINCE THE ORIGINAL GOV'T SURVEY. I SET THIS CORNER AT THE MID-POINT OF THE OCCUPIED SOUTH LINE OF THE SECTION. I HAVE PERPETUATED THIS CORNER AS SHOWN BELOW.

(F) WHETHER THE CORNER WAS RESTORED THROUGH ACCEPTANCE OF AN OBLITERATED EVIDENCE LOCATION OR A FOUND PERPETUATED LOCATION; N/A

(G) WHETHER THE CORNER WAS REESTABLISHED THROUGH LOST-CORNER PROPORTIONATE METHODS; IF SO, HOW THE DIRECTIONS AND DISTANCES TO OTHER PUBLIC LAND SURVEY CORNERS WHICH WERE USED AS EVIDENCE OR USED FOR PROPORTIONING IN DETERMINING THE CORNER LOCATION;
LOST CORNER PROPORTIONATE METHOD. SET CORNER AT MID-POINT OF OCCUPIED SECTION LINE.

SURVEYOR'S CERTIFICATE: CHAPTER 7.08 (3) (I)

THE UNDERSIGNED HEREBY CERTIFIES THAT THE U.S. PUBLIC LAND SURVEY MONUMENT RECORD SHOWN WAS DETERMINED BY THEM OR UNDER THEIR DIRECTION AND IS CORRECT AND COMPLETE TO THE BEST OF THEIR KNOWLEDGE AND BELIEF.



(Handwritten signature)

5/6/16

DATE CERTIFIED