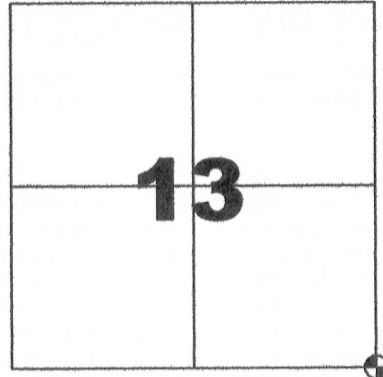


GRANT COUNTY

CERTIFIED U.S. PUBLIC LAND SURVEY MONUMENT RECORD

INSTRUCTIONS: THIS RECORD SHALL SHOW THE LOCATION OF THE CORNER AND SHALL INCLUDE ALL OF THE FOLLOWING ELEMENTS (A-1)

(A) IDENTIFY THE CORNER BY REFERENCE TO THE U.S. PUBLIC LAND SURVEY SYSTEM
SOUTHEAST CORNER SECTION 13, T6N, R4W



SOUTHEAST CORNER

SECTION 13, TOWN 6 NORTH, RANGE 4 WEST

TOWN OF MOUNT HOPE, GRANT COUNTY, WISCONSIN

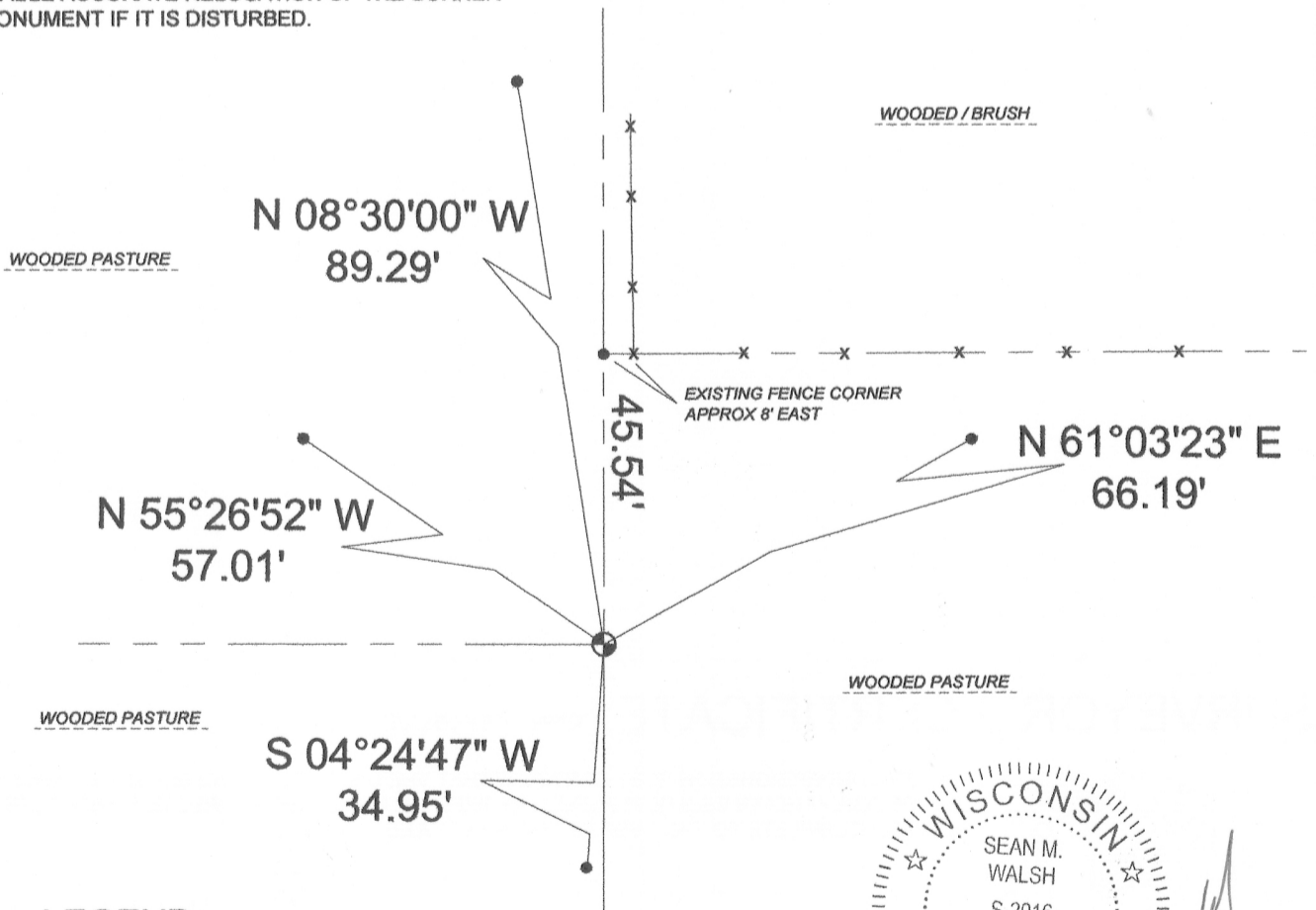
⊕ SET 3/4" DIA. X 18" IRON REBAR

WITNESSES TO CORNER LOCATION
 1) SEAN M. WALSH

BASIS OF BEARINGS AND ORIENTAITON
 WISCRS GRANT COUNTY, NAD 83(2011)
 LOCALIZED TO HT. MOD STA. "MOUNT HOPE GPS"
 WITH NAD83 2011 ADJUSTMENT COORDINATE VALUES

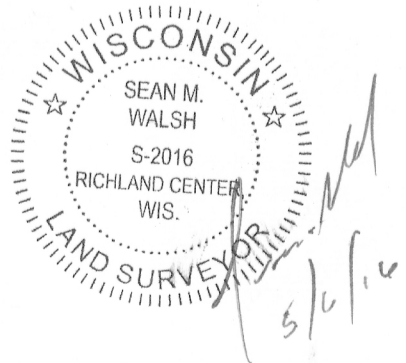
(C) IN THE PLAN VIEW DRAWING BELOW, PROVIDE REFERENCE TO AT LEAST 4 WITNESS MONUMENTS OR, IF THE LOCATION IS WITHIN A MUNICIPALITY, TO AT LEAST 2 WITNESS MONUMENTS. (WITNESS MONUMENTS SHALL BE MADE OF CONCRETE, NATURAL STONE, IRON OR OTHER EQUALLY DURABLE MATERIAL) DESCRIBE WITNESS MONUMENTS

(D) SHOW A PLAN VIEW DRAWING, DEPICTING THE RELEVANT MONUMENTS AND REFERENCE TIES, WHICH IS SUFFICIENTLY DETAILED TO ENABLE ACCURATE RELOCATION OF THE CORNER MONUMENT IF IT IS DISTURBED.



LEGEND

- ⊕ 3/4" dia x 18" iron rebar set
- 3/4" dia x 18" iron rebar set



GRANT COUNTY
CERTIFIED U.S. PUBLIC LAND SURVEY MONUMENT RECORD

RECOVERY PROCEDURES:

(E) A DESCRIPTION OF ANY RECORD EVIDENCE, MONUMENT EVIDENCE, OCCUPATIONAL EVIDENCE, TESTIMONIAL EVIDENCE OR ANY OTHER MATERIAL EVIDENCE CONSIDERED BY THE SURVEYOR, AND WHETHER THE MONUMENT WAS FOUND OR PLACED;

ON APRIL 21, 2016, IN CONJUNCTION WITH A PRIVATE SURVEY FOR DAVID O'BRIEN, BEING IN PART OF SECTION 13, I LOCATED PHYSICAL OCCUPATION FOR THE SOUTHWEST CORNER OF SECTION 18, T6N, R3W. THE ORIGINAL GOVERNMENT SURVEY SHOWS THE SOUTHWEST CORNER OF 18, 6-3W AS BEING 69 LINKS OR 45.54 FEET NORTH OF THE SOUTHEAST CORNER OF SECTION 13. I FIND NO RECORD EVIDENCE FOR THIS CORNER SUBSEQUENT TO THE ORIGINAL GOVERNMENT SURVEY. I PROJECTED THE OCCUPIED SOUTH LINE OF SECTION 18 WESTERLY TO INTERSECT A STRAIGHT LINE BETWEEN THE EAST QUARTER CORNER OF SECTION 13, T6N, R4W AND THE EAST QUARTER CORNER OF SECTION 24, T6N, R4W TO ESTABLISH A LOCATION FOR THE SOUTHWEST CORNER OF 18-6-3W, WHICH IS SUBORDINATE TO THE SOUTHEAST CORNER OF SECTION 13. I SET THE SOUTHEAST CORNER OF 13-6-4W AT A LOCATION 45.54' SOUTH ALONG THE STRAIGHT LINE FROM THE SOUTHWEST OF 18-6-3W AS THERE WAS NO OTHER EVIDENCE REMAINING FOR THIS CORNER.

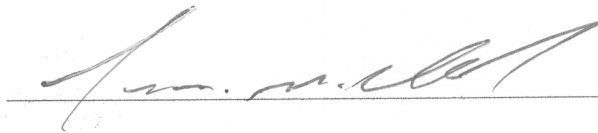
(F) WHETHER THE CORNER WAS RESTORED THROUGH ACCEPTANCE OF AN OBLITERATED EVIDENCE LOCATION OR A FOUND PERPETUATED LOCATION; N/A

(G) WHETHER THE CORNER WAS REESTABLISHED THROUGH LOST-CORNER PROPORTIONATE METHODS; IF SO, SHOW THE DIRECTIONS AND DISTANCES TO OTHER PUBLIC LAND SURVEY CORNERS WHICH WERE USED AS EVIDENCE OR USED FOR PROPORTIONING IN DETERMINING THE CORNER LOCATION;
LOST CORNER PROPORTIONATE METHOD. SET CORNER AT MID-POINT OF OCCUPIED SECTION LINE.

SURVEYOR'S CERTIFICATE: CHAPTER 7.08 (3) (I)



THE UNDERSIGNED HEREBY CERTIFIES THAT THE U.S. PUBLIC LAND SURVEY MONUMENT RECORD SHOWN WAS DETERMINED BY THEM OR UNDER THEIR DIRECTION AND IS CORRECT AND COMPLETE TO THE BEST OF THEIR KNOWLEDGE AND BELIEF.



5/6/16

DATE CERTIFIED

GRANT COUNTY

CERTIFIED U.S. PUBLIC LAND SURVEY MONUMENT RECORD

INSTRUCTIONS: THIS RECORD SHALL SHOW THE LOCATION OF THE CORNER AND SHALL INCLUDE ALL OF THE FOLLOWING ELEMENTS (A-1)

(A) IDENTIFY THE CORNER BY REFERENCE TO THE U.S. PUBLIC LAND SURVEY SYSTEM
SOUTHWEST CORNER SECTION 18, T6N, R3W

⊕ SET 3/4" X 18" IRON REBAR

WITNESSES TO CORNER LOCATION
 1) SEAN M. WALSH

BASIS OF BEARINGS AND ORIENTAITON
 WISCRS GRANT COUNTY, NAD 83(2011)
 LOCALIZED TO HT. MOD STA. "MOUNT HOPE GPS"
 WITH NAD83 2011 ADJUSTMENT COORDINATE VALUES

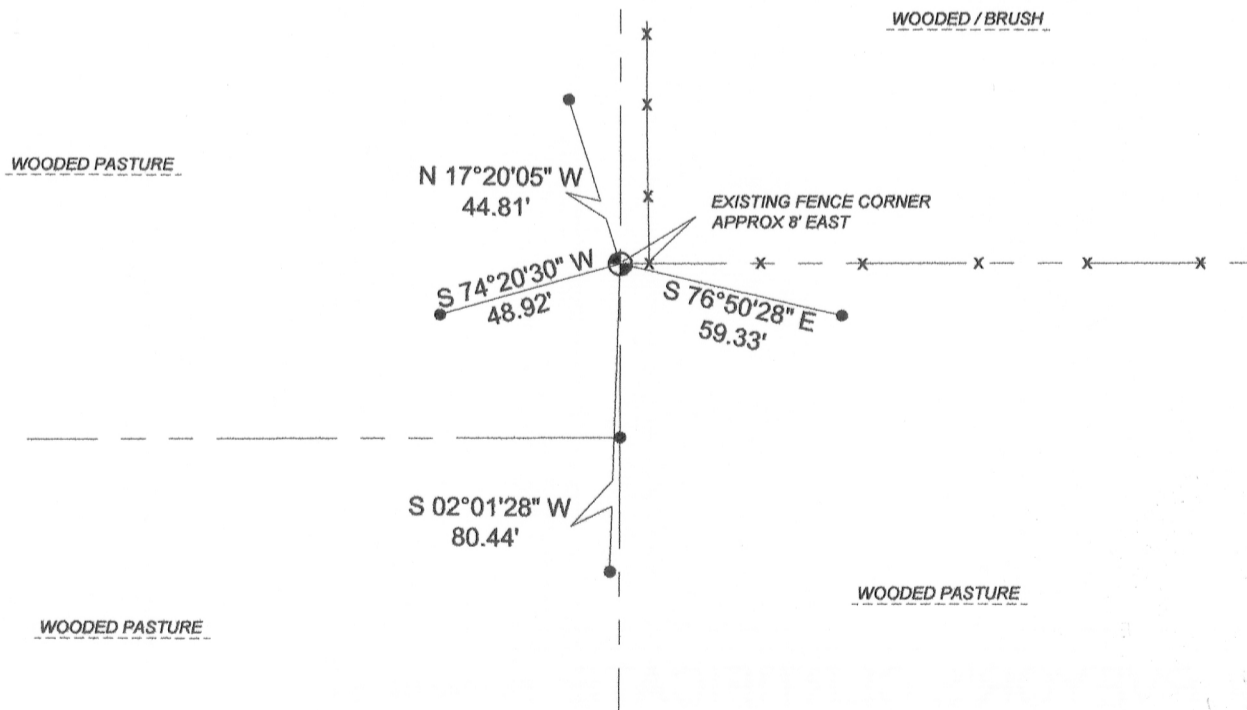


SOUTHWEST CORNER

**SECTION 18, TOWN 6 NORTH, RANGE 3 WEST
 TOWN OF MOUNT IDA, GRANT COUNTY, WISCONSIN**

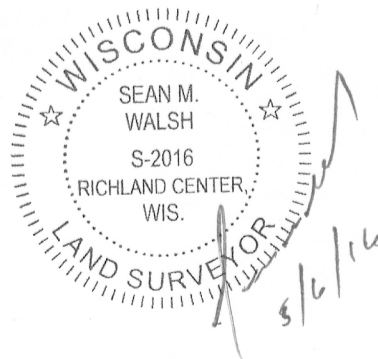
(C) IN THE PLAN VIEW DRAWING BELOW, PROVIDE REFERENCE TO AT LEAST 4 WITNESS MONUMENTS OR, IF THE LOCATION IS WITHIN A MUNICIPALITY, TO AT LEAST 2 WITNESS MONUMENTS. (WITNESS MONUMENTS SHALL BE MADE OF CONCRETE, NATURAL STONE, IRON OR OTHER EQUALLY DURABLE MATERIAL) DESCRIBE WITNESS MONUMENTS

(D) SHOW A PLAN VIEW DRAWING, DEPICTING THE RELEVANT MONUMENTS AND REFERENCE TIES, WHICH IS SUFFICIENTLY DETAILED TO ENABLE ACCURATE RELOCATION OF THE CORNER MONUMENT IF IT IS DISTURBED.



LEGEND

- ⊕ 3/4" Dia x 18" iron rebar set
- 3/4" dia x 18" iron rebar set



GRANT COUNTY
CERTIFIED U.S. PUBLIC LAND SURVEY MONUMENT RECORD

RECOVERY PROCEDURES:

(E) A DESCRIPTION OF ANY RECORD EVIDENCE, MONUMENT EVIDENCE, OCCUPATIONAL EVIDENCE, TESTIMONIAL EVIDENCE OR ANY OTHER MATERIAL EVIDENCE CONSIDERED BY THE SURVEYOR, AND WHETHER THE MONUMENT WAS FOUND OR PLACED;

ON APRIL 21, 2016, IN CONJUNCTION WITH A PRIVATE SURVEY FOR DAVID O'BRIEN, BEING IN PART OF SECTION 13, 6-4W. I LOCATED PHYSICAL OCCUPATION FOR THE SOUTH LINE OF SECTION 18 AND A FENCE CORNER NEAR THE SOUTHWEST CORNER OF SECTION 18, T6N, R3W. FINDING NO OTHER ACCEPTABLE PHYSICAL OR RECORD EVIDENCE, I PROJECTED THE OCCUPIED SOUTH LINE OF SECTION 18 WESTERLY TO INTERSECT A STRAIGHT LINE BETWEEN THE EAST QUARTER CORNER OF SECTION 13, 6-4W AND THE EAST QUARTER CORNER OF SECTION 24, T6N, R4W TO ESTABLISH A LOCATION FOR THE SOUTHWEST CORNER OF 18-6-3W.

(F) WHETHER THE CORNER WAS RESTORED THROUGH ACCEPTANCE OF AN OBLITERATED EVIDENCE LOCATION OR A FOUND PERPETUATED LOCATION; I USED A COMBINATION OF OCCUPATION AND MATHEMATICAL SOLUTION EXTENDING OCCUPATION OF SOUTH SECTION LINE WESTERLY TO INTERSECT STRAIGHT LINE BETWEEN ADJOINING QUARTER CORNERS.

(G) WHETHER THE CORNER WAS REESTABLISHED THROUGH LOST-CORNER PROPORTIONATE METHODS; IF SO, HOW THE DIRECTIONS AND DISTANCES TO OTHER PUBLIC LAND SURVEY CORNERS WHICH WERE USED AS EVIDENCE OR USED FOR PROPORTIONING IN DETERMINING THE CORNER LOCATION;

N/A

SURVEYOR'S CERTIFICATE: CHAPTER 7.08 (3) (I)



THE UNDERSIGNED HEREBY CERTIFIES THAT THE U.S. PUBLIC LAND SURVEY MONUMENT RECORD SHOWN WAS DETERMINED BY THEM OR UNDER THEIR DIRECTION AND IS CORRECT AND COMPLETE TO THE BEST OF THEIR KNOWLEDGE AND BELIEF.

[Handwritten Signature]

5/6/16
DATE CERTIFIED