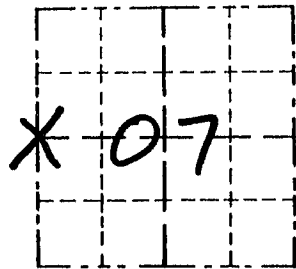


Survey Monument Record

TYPE OF MONUMENT 3/4" X 24" IRON
BAR SET

CORNER NO. 34
SECTION 07
TOWN 6N
RANGE 3W

FIELD BOOK: 97-10
PAGE (2)



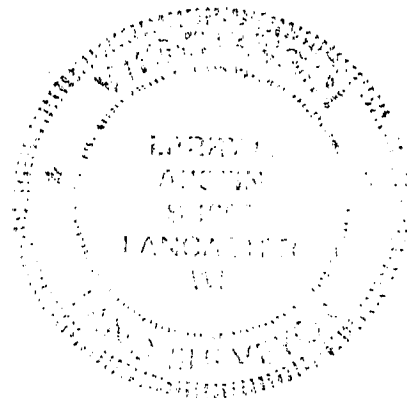
LOCATION
(Indicated by "X")

BASIS FOR MONUMENT LOCATION

(Use reverse side if necessary)

Show info such as: History of corner, with reference to Vol. and pg., dates, surveyor; exact description of monument replaced; if location computed, by taped or EDM traverse; landowner, remarks, etc.

SEAL:



IN 1981
KEN KERST SET THE CORNER.
IN 1985 B. Bowden Tied out
THE CORNER SET BY KERST.
IN 1995 L. AUSTIN TIED OUT
THE PIPE AT THE EAST
1/4 CORNER OF SECTION 12,
T6N R4W. I SET THE W 1/4 CORNER
OF SEC. 7 AT THE PROPORTIONED
OFFSET FROM THE FOUND
PIPE AT THE E 1/4 CORNER OF
SECTION 12 OF T6N, R4W AND
ON THE EAST LINE OF SECTION 12.
(THE W 1/4 CORNER OF SEC. 7 AS ORIGINALLY
TIED OUT IN 1985 IS INCORRECT).

CERTIFIED CORRECT

Harry J. Aust
Registered Land Surveyor

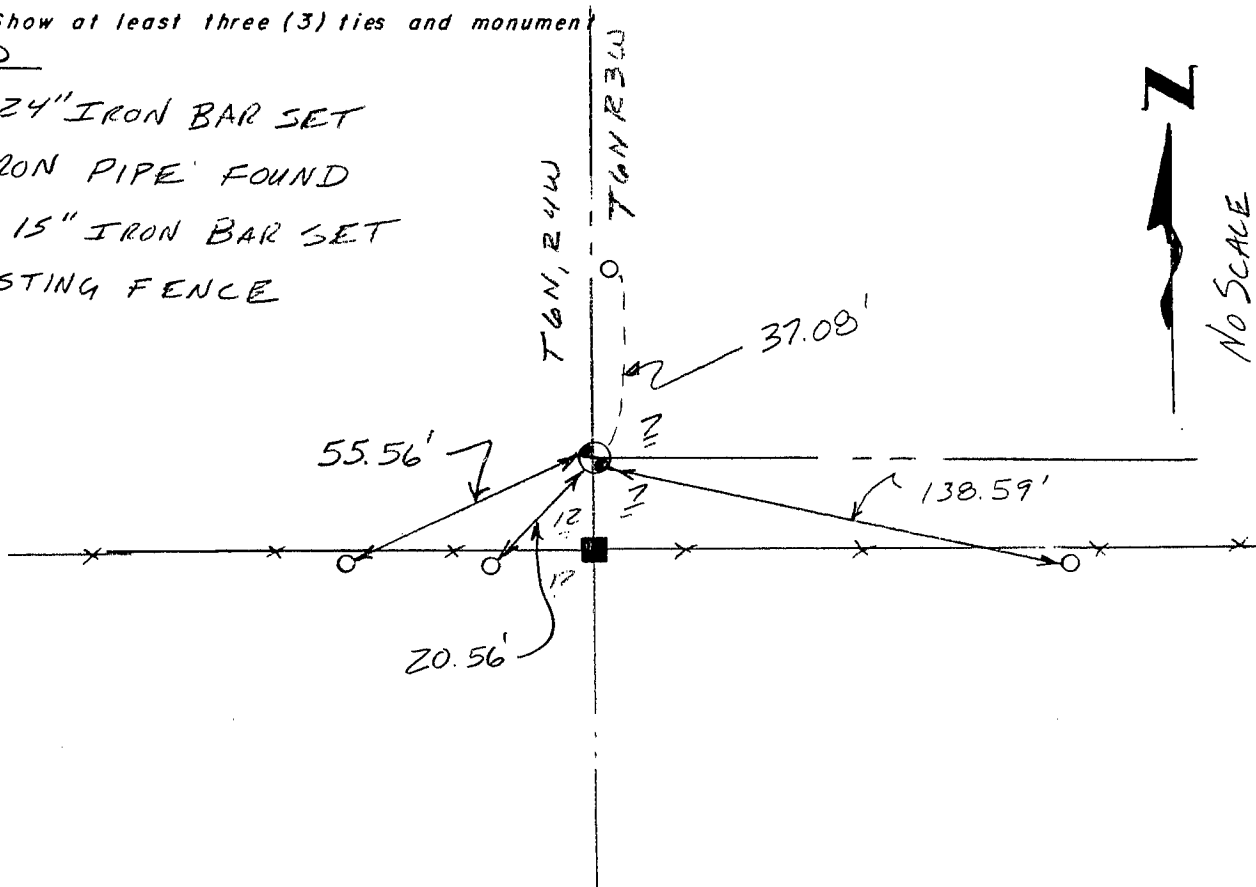
DATE: 4/10/98

TIE SKETCH

Show at least three (3) ties and monument

LEGEND

- ⊕ 3/4" X 24" IRON BAR SET
- 1" IRON PIPE FOUND
- 1/2" X 15" IRON BAR SET
- XX EXISTING FENCE



GRANT COUNTY

Survey Monument Record

TYPE OF MONUMENT 1 1/2" IRON PIPE FOUND
 STATE PLANE COORDINATES: N _____
 E _____
 ELEVATION — M.S.L. DATUM: _____
 THETA ANGLE: _____
 FIELD BOOK: 9506
 PAGE 14

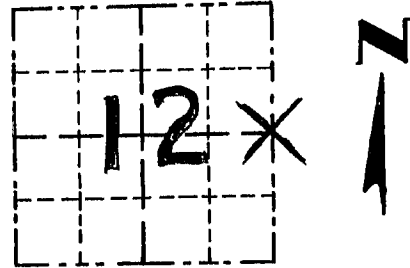
CORNER NO. 40
 SECTION 12
 TOWN 6 N
 RANGE 4 W
E 1/4 COR.

BASIS FOR MONUMENT LOCATION

(Use reverse side if necessary)

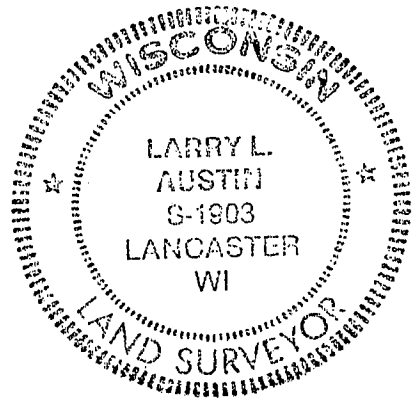
Show info such as: History of corner, with reference to Vol. and pg., dates, surveyor; exact description of monument replaced; if location computed, by taped or EDM traverse; landowner, remarks, etc.

CORNER ORIGINALLY SET BY SIBLEY IN 1832; I ACCEPTED OCCUPATIONAL EVIDENCE AT THE CORNER LOCATION & VERIFIED BY EDM TRAVERSE OF THE AREA.



LOCATION
(Indicated by "X")

SEAL:



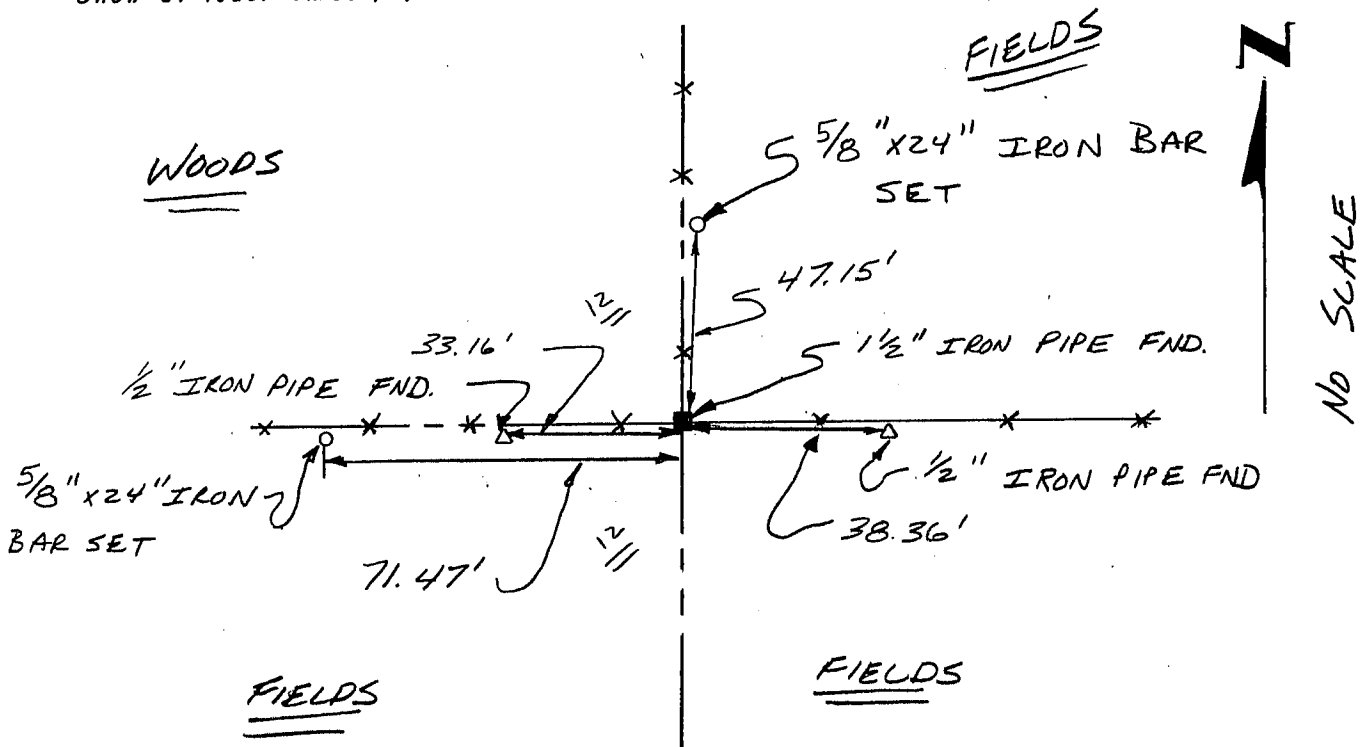
CERTIFIED CORRECT

Larry L. Austin
 Registered Land Surveyor

DATE: 4/20/95

TIE SKETCH

Show at least three (3) ties and monument

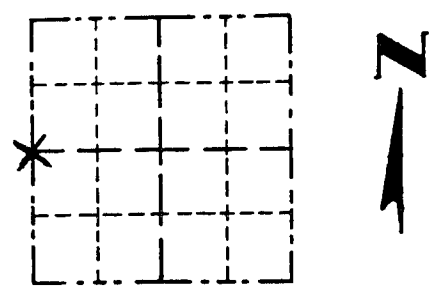


GRANT COUNTY

Survey Monument Record

CORNER NO. 34
SECTION 7
TOWN 6N
RANGE 3W

TYPE OF MONUMENT 1/4" PIPE FOUND
STATE PLANE COORDINATES: N _____
E _____
ELEVATION — M.S.L. DATUM: _____
THETA ANGLE: _____
FIELD BOOK: _____
PAGE _____



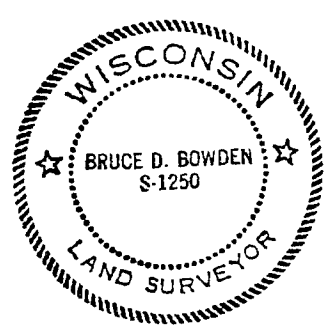
LOCATION
(Indicated by "X")

BASIS FOR MONUMENT LOCATION

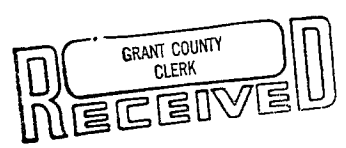
(Use reverse side if necessary)

Show info such as: History of corner, with reference to Vol. and pg., dates, surveyor; exact description of monument replaced; if location computed, by taped or EDM traverse; landowner, remarks, etc.

SEAL:



Accepted 1" pipe found at corner as recorded on a survey by Kenneth Kerst and dated March 10, 1981. Found no other history of this corner since the original government survey.



MAR 12 1985

CERTIFIED CORRECT
Bruce D. Bowden
Registered Land Surveyor
DATE: March 11, 1985

TIE SKETCH

Show at least three (3) ties and monument

