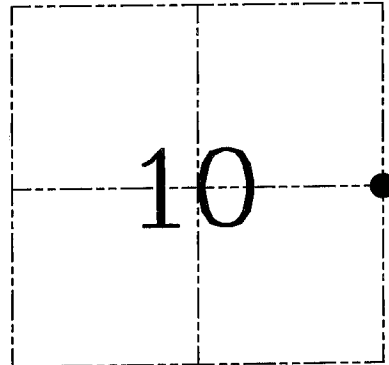
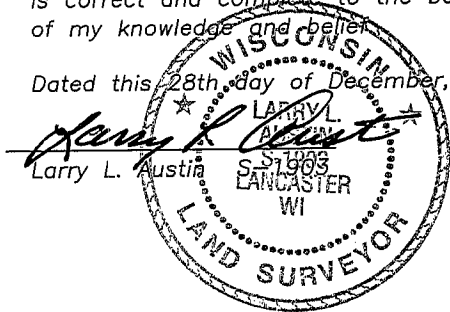


U.S. PUBLIC LAND SURVEY MONUMENT RECORD – GRANT COUNTY, WI
Section 10, Town 6 North Range 4 West, Town of Mount Hope

CERTIFICATE

I, Larry L. Austin, do hereby certify that the corner location on this record was determined by me and/or under my direct supervision and that this U.S. public land survey monument record is correct and complete to the best of my knowledge and belief.

Dated this 28th day of December, 2005



● = CORNER LOCATION

HISTORY OF CORNER ESTABLISHMENT

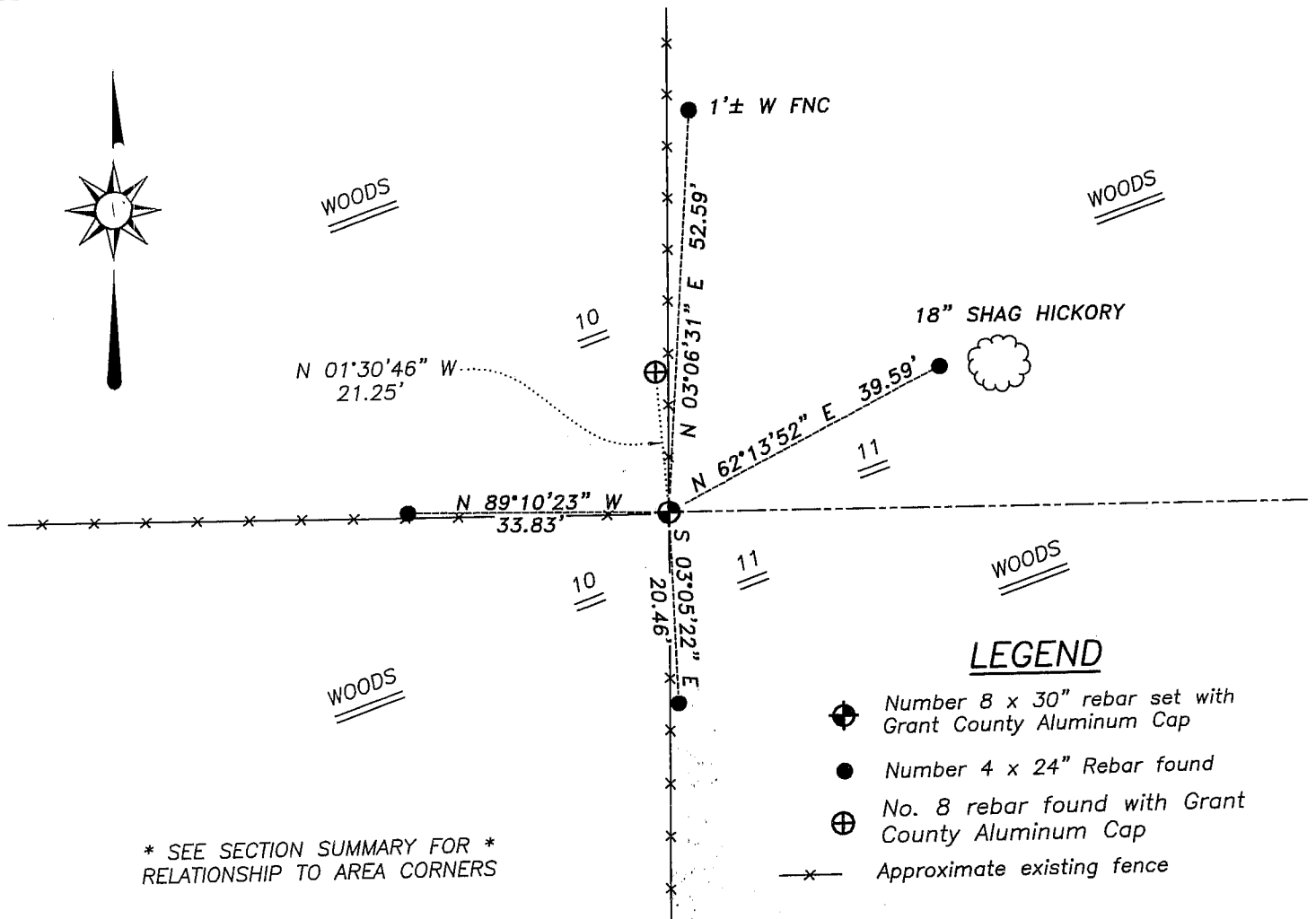
Corner was originally set in 1833 by Parke. In 2002 King set a corner proportionately between the Southeast corner and a 2" iron pipe in the area of the Northeast corner.

DESCRIPTION OF CORNER EVIDENCE FOUND

I did not accept the King location because the Northeast corner (see tiesheet) was a 1" iron pipe not a 2" iron pipe found nearby. I found and accepted a three-way fence intersection which was occupied for many years after an EDM & GPS traverse of the area.

DESCRIPTION OF CORNER AND WITNESS MONUMENTS, references and accessories used to perpetuate the original or re-established location of this corner. Witnesses to corner location Bobby Sedgwick & Brad Digman & Shane Austin

SKETCH:



* SEE SECTION SUMMARY FOR *
 RELATIONSHIP TO AREA CORNERS

LEGEND

- ⊕ Number 8 x 30" rebar set with Grant County Aluminum Cap
- Number 4 x 24" Rebar found
- ⊕ No. 8 rebar found with Grant County Aluminum Cap
- x- Approximate existing fence

SKETCH NOT TO SCALE



Austin Engineering LLC

4211 HWY 81 E, LANCASTER, WI 53813
 PHONE 608-723-6363 FAX 608-723-6702

JOB NUMBER: 05S298
 FIELDBOOK: TDSR, 2516
 G:\T7NR4W\133
 H:\TIE\T6NR4W\38

DRAWN BY: ML DIGMAN
 APPROVED: LL AUSTIN

CERTIFIED LAND CORNER

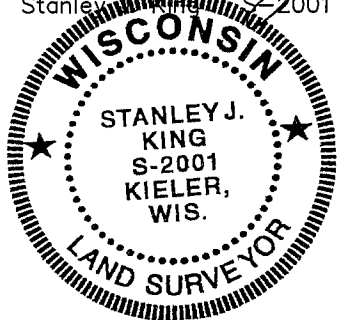
STATE OF WISCONSIN COUNTY OF GRANT

CERTIFICATE

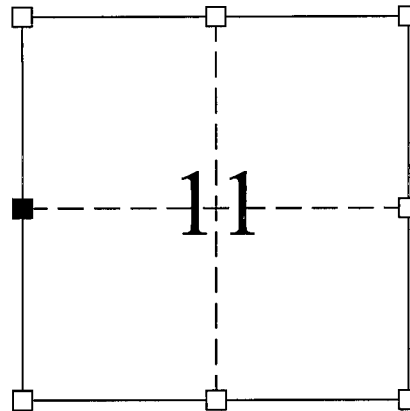
I, Stanley J. King, do hereby certify that the corner location of this record was determined by me and/or under my direct supervision and that this U.S. public land survey monument record is correct and complete to the best of my knowledge and belief.

Dated this 5th day of December, 2002

Stanley J. King
Stanley J. King S-2001



Seal:



■ = Corner Location
T6N R4W
Town of: MOUNT HOPE

History of original corner establishment:

Original corner set in 1833 by Parke.
No evidence of corner found.

Description of corner evidence found:

Found no evidence of corner or it's witness. Corner reset by single proportionate measurement between the northwest corner of section 11 and the southwest corner of section 11. This was verified using EDM method.

Description of corner and witness monuments, references, and accessories used to perpetuate the original or re-established location of this corner:

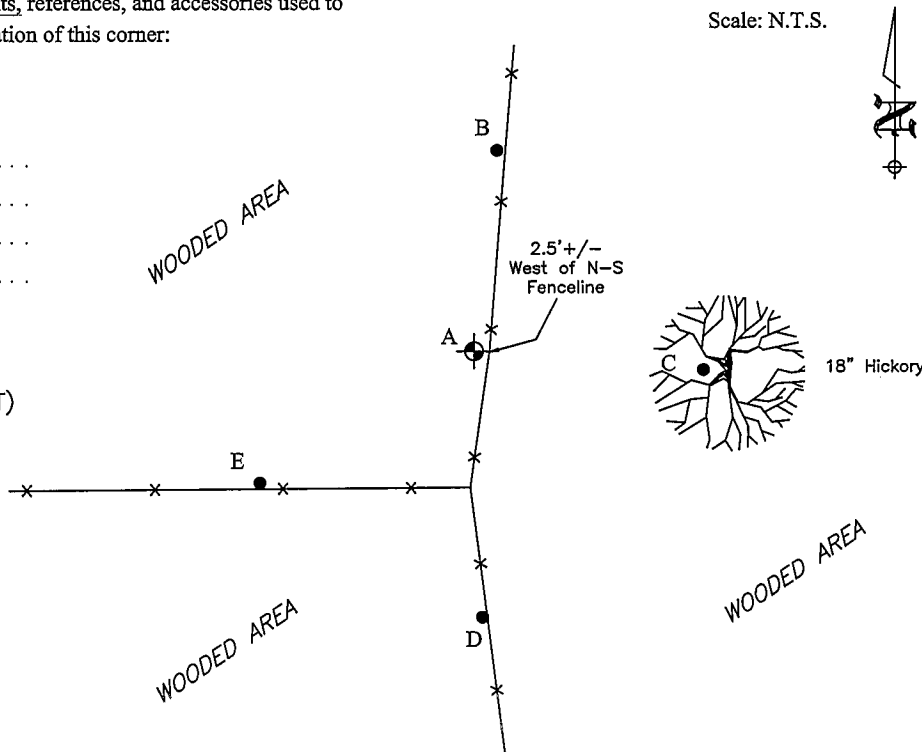
Witnesses to corner location:

Jeffrey J. Brandt
Justin R. Persinger

LEGEND

- ⊕ = SECTION CORNER (GRANT CTY. ALUM. MONUMENT)
- = TIE BAR (3/4" REBAR)

- (A-B) = N 6°27'16" E 31.49'
- (A-C) = S 85°12'50" E 35.66'
- (A-D) = S 1°49'49" E 41.65'
- (A-E) = S 58°32'16" W 39.16'



BLACKHAWK ENGINEERING, Ltd.
Civil & Municipal Engineers and Building Design
2 INSIGHT DRIVE PLATTEVILLE, WISCONSIN OFFICE PHONE: (608) 348-4433 FAX: (608) 348-4449

SURVEY CREW: JJB, JRP
DRAWN BY: JJB
DATE: DEC. 5, 2002
FILE: f:\acad12\2002\02-113\seccor.dwg