

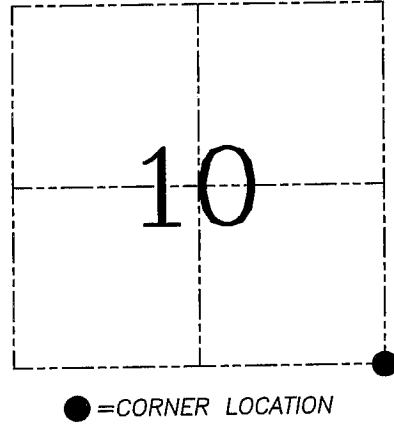
U.S. PUBLIC LAND SURVEY MONUMENT RECORD – GRANT COUNTY, WI
Section 10, Town 6 North Range 4 West, Town of Mount Hope

CERTIFICATE

I, Larry L. Austin, do hereby certify that the corner location on this record was determined by me and/or under my direct supervision and that this U.S. public land survey monument record is correct and complete to the best of my knowledge and belief.

Dated this 29th day of December, 2005

Larry L. Austin
 Larry L. Austin SS-1903
 LANCASTER WI
 LAND SURVEYOR



HISTORY OF CORNER ESTABLISHMENT

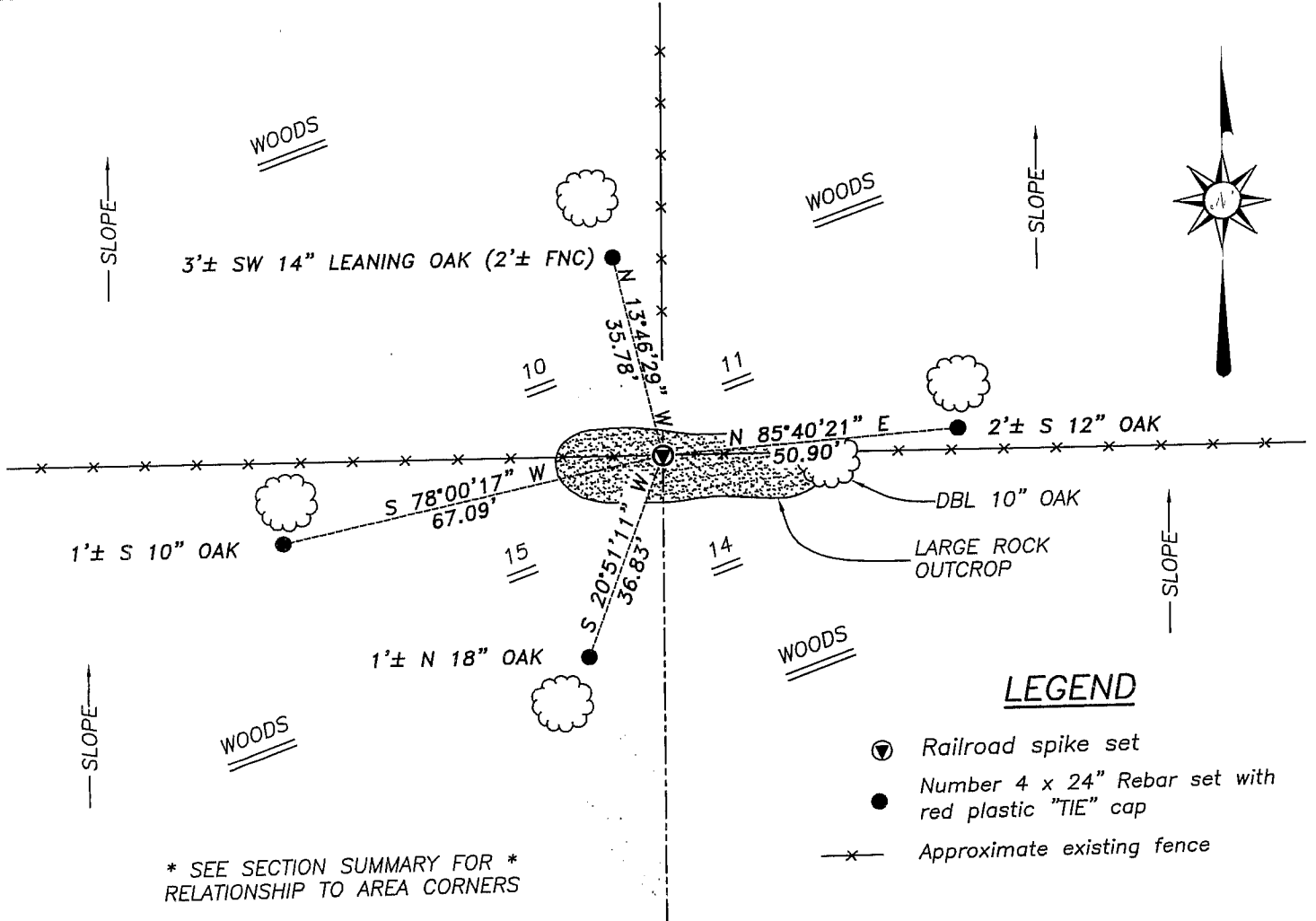
Corner was originally set in 1833 by Parke. In 1978 Larry Schmit found an existing fence intersection. In 2002 Stan King measured the same fence intersection.

DESCRIPTION OF CORNER EVIDENCE FOUND

I set the Schmit location based on measurements to other corners Schmit measured. Verified this location using EDM & GPS methods.

DESCRIPTION OF CORNER AND WITNESS MONUMENTS, references and accessories used to perpetuate the original or re-established location of this corner. Witnesses to corner location Bobby Sedgwick & Brad Digman & Shane Austin

SKETCH:

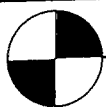


* SEE SECTION SUMMARY FOR *
 RELATIONSHIP TO AREA CORNERS

LEGEND

- Ⓢ Railroad spike set
- Number 4 x 24" Rebar set with red plastic "TIE" cap
- x— Approximate existing fence

SKETCH NOT TO SCALE



Austin
Engineering LLC

4211 HWY 81 E, LANCASTER, WI 53813
 PHONE 608-723-6363 FAX 608-723-6702

JOB NUMBER: 05S298
 FIELDBOOK: TDSR, 2516
 G:\T7NR4W\133
 H:\TIE\T6NR4W\45

DRAWN BY: ML DIGMAN
 APPROVED: LL AUSTIN