

U.S. PUBLIC LAND SURVEY MONUMENT RECORD - GRANT COUNTY, WI

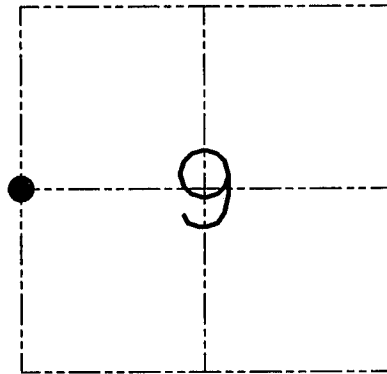
Section 9, Town 6 North Range 4 West, Town of Mount Hope

CERTIFICATE

I, Larry L. Austin, do hereby certify that the corner location on this record was determined by me and/or under my direct supervision and that this U.S. public land survey monument record is correct and complete to the best of my knowledge and belief.

Dated this 12th day of May, 2001

Larry L. Austin
Larry L. Austin S-1903



● = CORNER LOCATION

HISTORY OF CORNER ESTABLISHMENT

Corner was originally set in 1833 by Harvey Parke. In 1978 Schmit established the corner at a proportionate location. In 1998 Mike LaRosa set a No. 6 iron bar at an occupied fence corner.

DESCRIPTION OF CORNER EVIDENCE FOUND

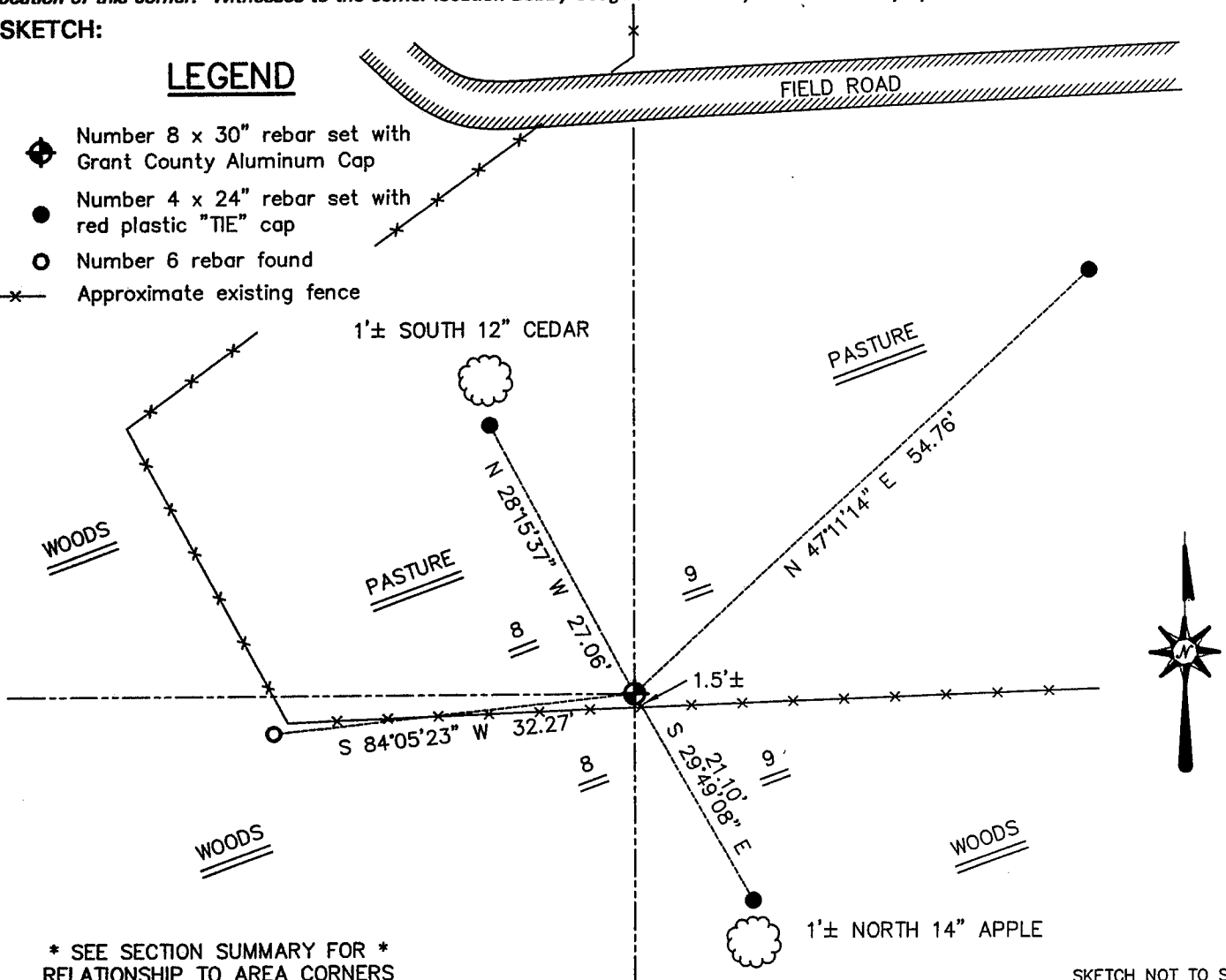
I found Schmit's location to be correct due to occupied fence North of the corner. The corner falls in the area of a ravine. I believe the fences to be fences of convenience due to the ravine. Verified this location using EDM & GPS methods.

DESCRIPTION OF CORNER AND WITNESS MONUMENTS, references and accessories used to perpetuate the original or re-established location of this corner. Witnesses to the corner location Bobby Sedgwick & Shelby Blindert & Jerry Speilman

SKETCH:

LEGEND

- Number 8 x 30" rebar set with Grant County Aluminum Cap
- Number 4 x 24" rebar set with red plastic "TIE" cap
- Number 6 rebar found
- x— Approximate existing fence



* SEE SECTION SUMMARY FOR *
RELATIONSHIP TO AREA CORNERS

SKETCH NOT TO SCALE

AUSTIN ENGINEERING, LLC

4211 HWY 81 EAST, LANCASTER, WI 53813
PHONE 608-723-6363 FAX 608-723-6702

FIELDBOOK: SDR33, 2007, 2009,
G:\T6NR4W\09
C:\SWA\TIE\T6NR4W\36
CREW: BS-SB-SA-TF

DRAWN BY: SW AUSTIN
APPROVED: LL AUSTIN

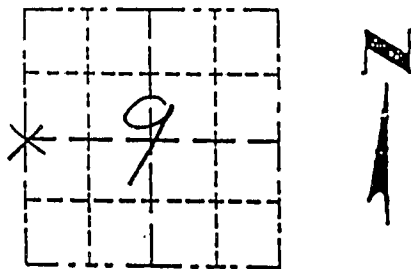
CORNER NUMBER 36

REC'D AUG 26 1998

Survey Monument Record

CORNER NO. _____
SECTION 9
TOWN 6N
RANGE 4W

TYPE OF MONUMENT 3/4" Iron Rod Set at
STATE PLANE COORDINATES: N corner post
E _____
ELEVATION — M.S.L. DATUM: _____
THETA ANGLE: _____
FIELD BOOK: _____
PAGE _____



LOCATION
(Indicated by "X")

- FOUND PERPETUATED LOCATION
- OBLITERATED EVIDENCE LOCATION
- LOST CORNER (RESTORED BY PROPORTIONATE METHOD)

BASIS FOR MONUMENT LOCATION

(Use reverse side if necessary)

Show info such as: History of corner, with reference to Vol. and pg., dates, surveyor; exact description of monument replaced; if location computed, by taped or EDM traverse; landowner, remarks, etc.

A 3/4" Iron Rod was set at the corner post noted in an unrecorded survey by Stan Abings performed in the late 1970's for Tim Sket and Delbert Brechler. Deeds are recorded using this survey description. I set an iron rod at a prorated corner noted by Laurence Schmit in a survey dated 10/25/78 & revised 1/16/1980. There is no physical evidence to support the pro-rated location. This iron was left in as a tie.

CERTIFIED CORRECT TO THE BEST OF MY KNOWLEDGE AND BELIEF

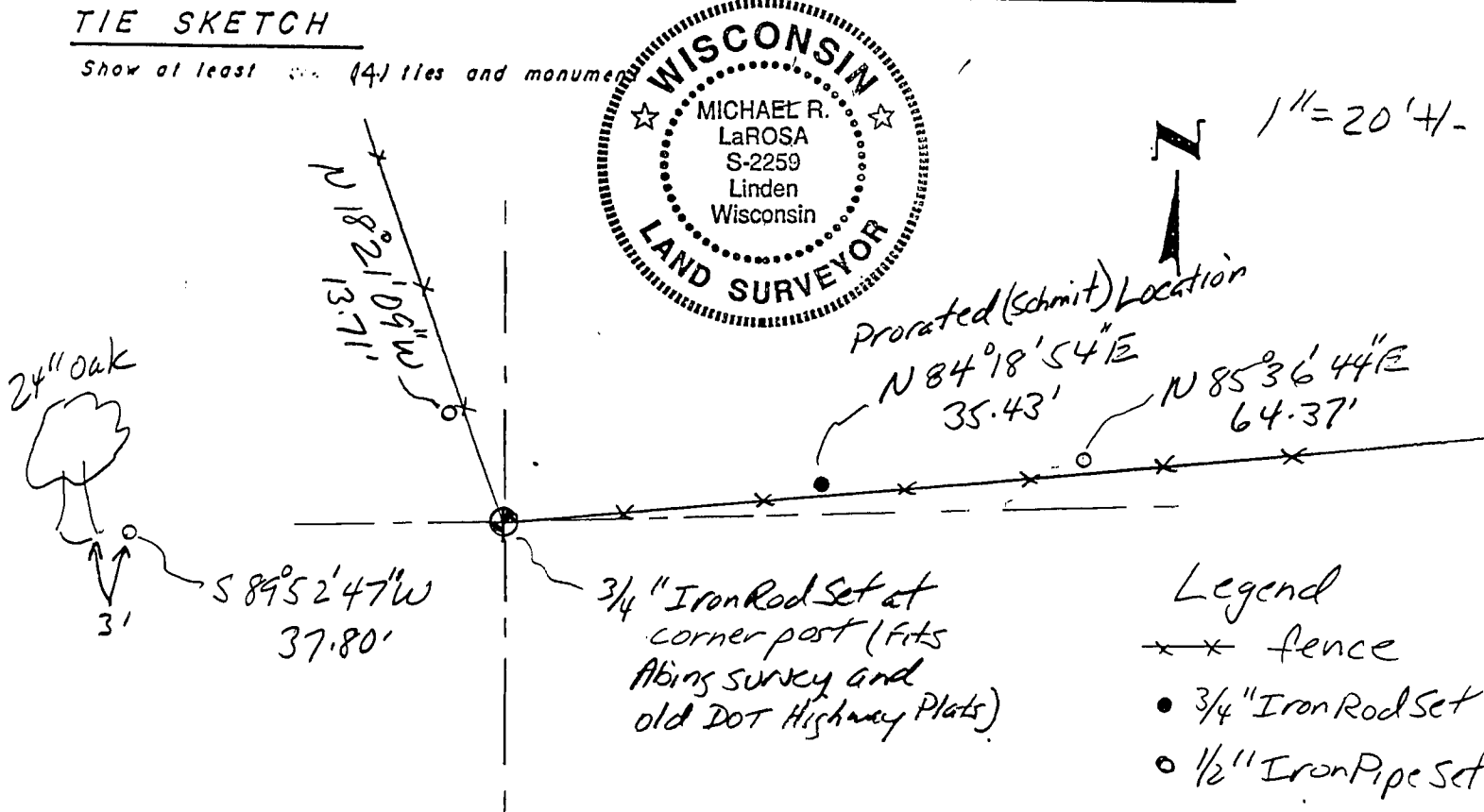
Michael R. LaRosa

Registered Land Surveyor

DATE: 6/26/1998

TIE SKETCH

Show at least (4) ties and monuments



- Legend
- x — fence
 - 3/4" Iron Rod Set
 - 1/2" Iron Pipe Set