

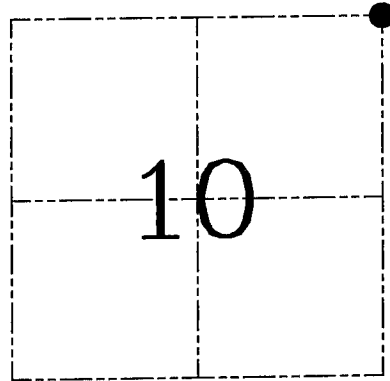
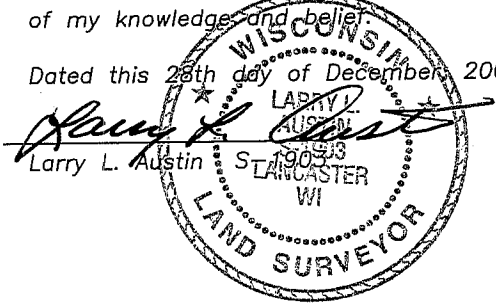
U.S. PUBLIC LAND SURVEY MONUMENT RECORD – GRANT COUNTY, WI

Section 10, Town 6 North Range 4 West, Town of Mount Hope

CERTIFICATE

I, Larry L. Austin, do hereby certify that the corner location on this record was determined by me and/or under my direct supervision and that this U.S. public land survey monument record is correct and complete to the best of my knowledge and belief.

Dated this 28th day of December, 2005



● = CORNER LOCATION

HISTORY OF CORNER ESTABLISHMENT

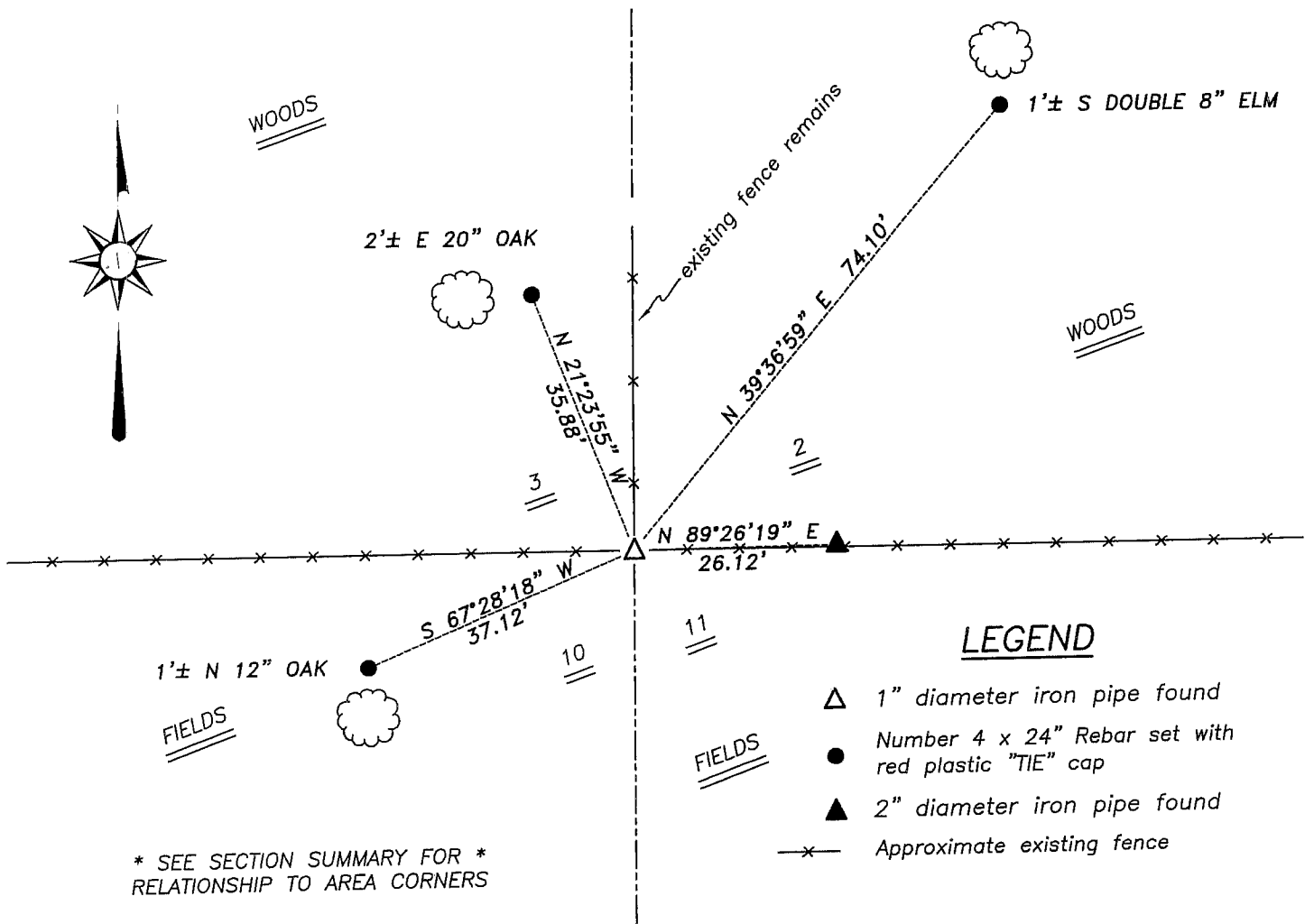
Corner was originally set in 1833 by Parke. In 1978 Schmit set a 1" iron pipe at this location. Stan found a 2" iron pipe at this location in 2002.

DESCRIPTION OF CORNER EVIDENCE FOUND

I found both the 1" & 2" iron pipes. I accepted the 1" iron pipe by Schmit at the occupational location. Verified this location using EDM & GPS methods.

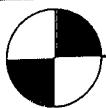
DESCRIPTION OF CORNER AND WITNESS MONUMENTS, references and accessories used to perpetuate the original or re-established location of this corner. Witnesses to corner location Bobby Sedgwick & Brad Digman & Shane Austin

SKETCH:



* SEE SECTION SUMMARY FOR *
RELATIONSHIP TO AREA CORNERS

SKETCH NOT TO SCALE



**Austin
Engineering LLC**

4211 HWY 81 E, LANCASTER, WI 53813
PHONE 608-723-6363 FAX 608-723-6702

JOB NUMBER: 05S298
FIELDBOOK: TDSR, 2516
G:\T7NR4W\133
H:\TIE\T6NR4W\25

DRAWN BY: ML DIGMAN
APPROVED: LL AUSTIN