

U.S. PUBLIC LAND SURVEY MONUMENT RECORD - GRANT COUNTY, WI

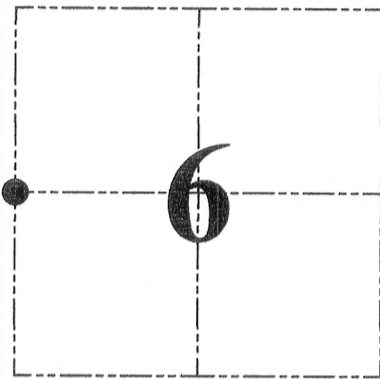
Section 6, Town 6 North Range 3 West, Town of Mount Ida

CERTIFICATE:

I, Aaron J. Austin, do hereby certify that the corner location on this record was determined by me and/or under my direct supervision and that this U.S. Public Land Survey Monument Record is correct and complete to the best of my knowledge and belief.

Dated this 3rd day of July, 2014.

Aaron J. Austin
 Aaron J. Austin, S-2922



● = CORNER LOCATION

HISTORY OF CORNER ESTABLISHMENT:

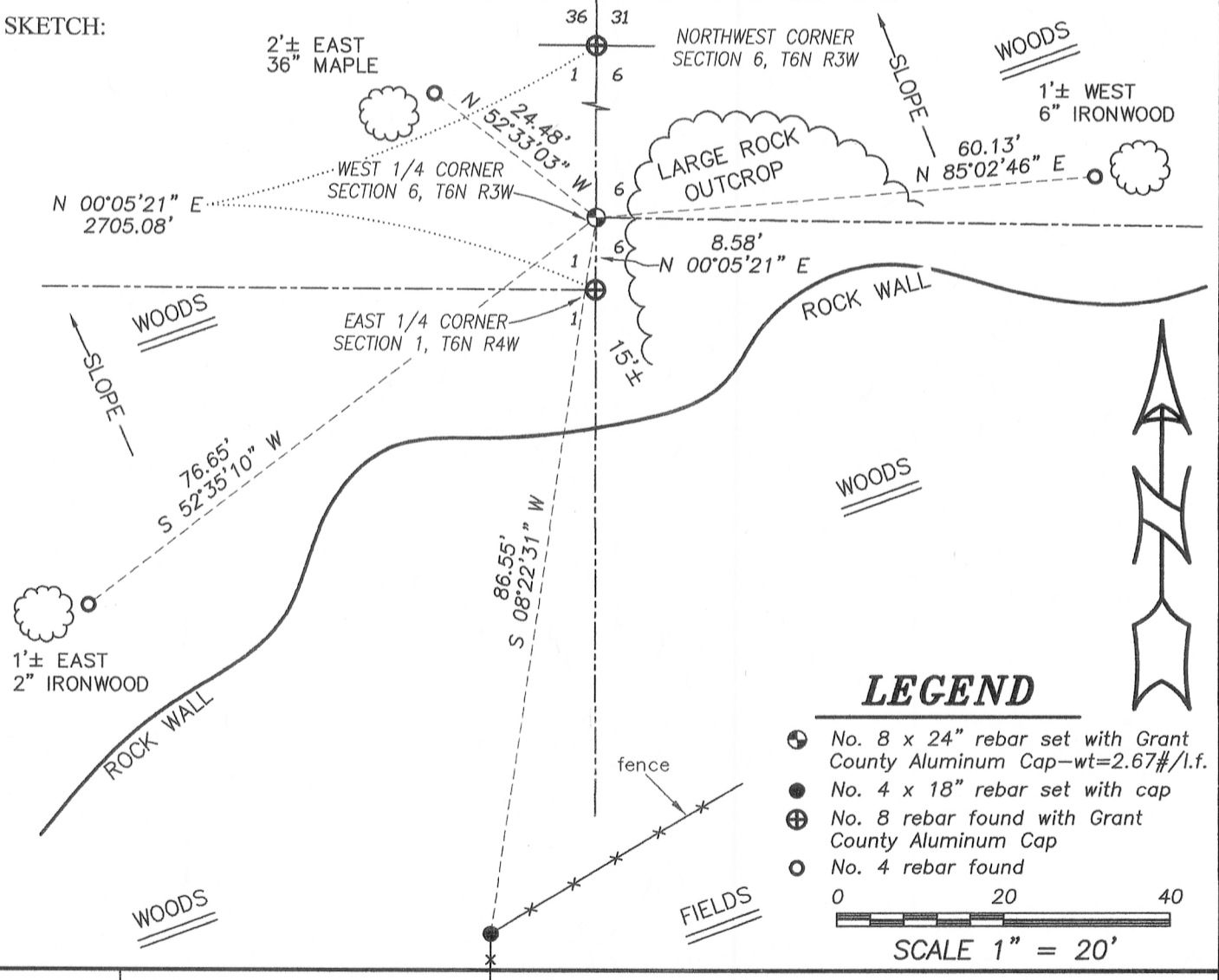
Corner was not set with Original Survey.
 Corner was set on a Survey filed in Book I, Page 70 on a Survey by J.C. Scott dated November 2, 1909. No other record was found for this corner.

DESCRIPTION OF CORNER EVIDENCE FOUND:

I reset the corner at 13 links North of the East 1/4 corner of Section 1, T6N R4W as established by the above referenced J.C. Scott survey.
 I verified this location with E.D.M. and G.P.S. methods.

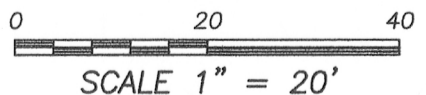
DESCRIPTION OF CORNER AND WITNESS MONUMENTS, references and accessories used to perpetuate the original or re-established location of this corner. Witnesses to corner location Shane Austin.

SKETCH:



LEGEND

- ⊕ No. 8 x 24" rebar set with Grant County Aluminum Cap-wt=2.67#/l.f.
- No. 4 x 18" rebar set with cap
- ⊕ No. 8 rebar found with Grant County Aluminum Cap
- No. 4 rebar found



4211 HWY 81 E, LANCASTER, WI 53813
 PHONE: 608-723-6363 FAX: 608-723-6702

JOB NO: 14s039
 G:\14s039
 H:\TIENT6NR3W\14

FIELDBOOK: TDSR
 DRAWN BY: AJ AUSTIN
 CREW: SW AUSTIN

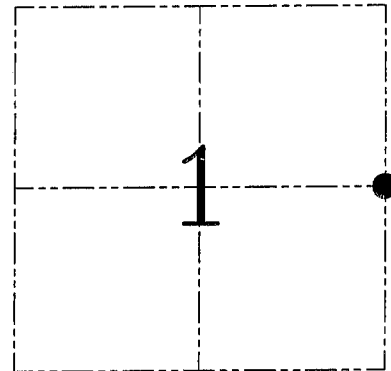
U.S. PUBLIC LAND SURVEY MONUMENT RECORD – GRANT COUNTY, WI
Section 1, Town 6 North Range 4 West, Town of Woodman

CERTIFICATE

I, Larry L. Austin, do hereby certify that the corner location on this record was determined by me and/or under my direct supervision and that this U.S. public land survey monument record is correct and complete to the best of my knowledge and belief.

Dated this 21st day of January, 2005

Larry L. Austin
 Larry L. Austin S-1903



● = CORNER LOCATION

HISTORY OF CORNER ESTABLISHMENT

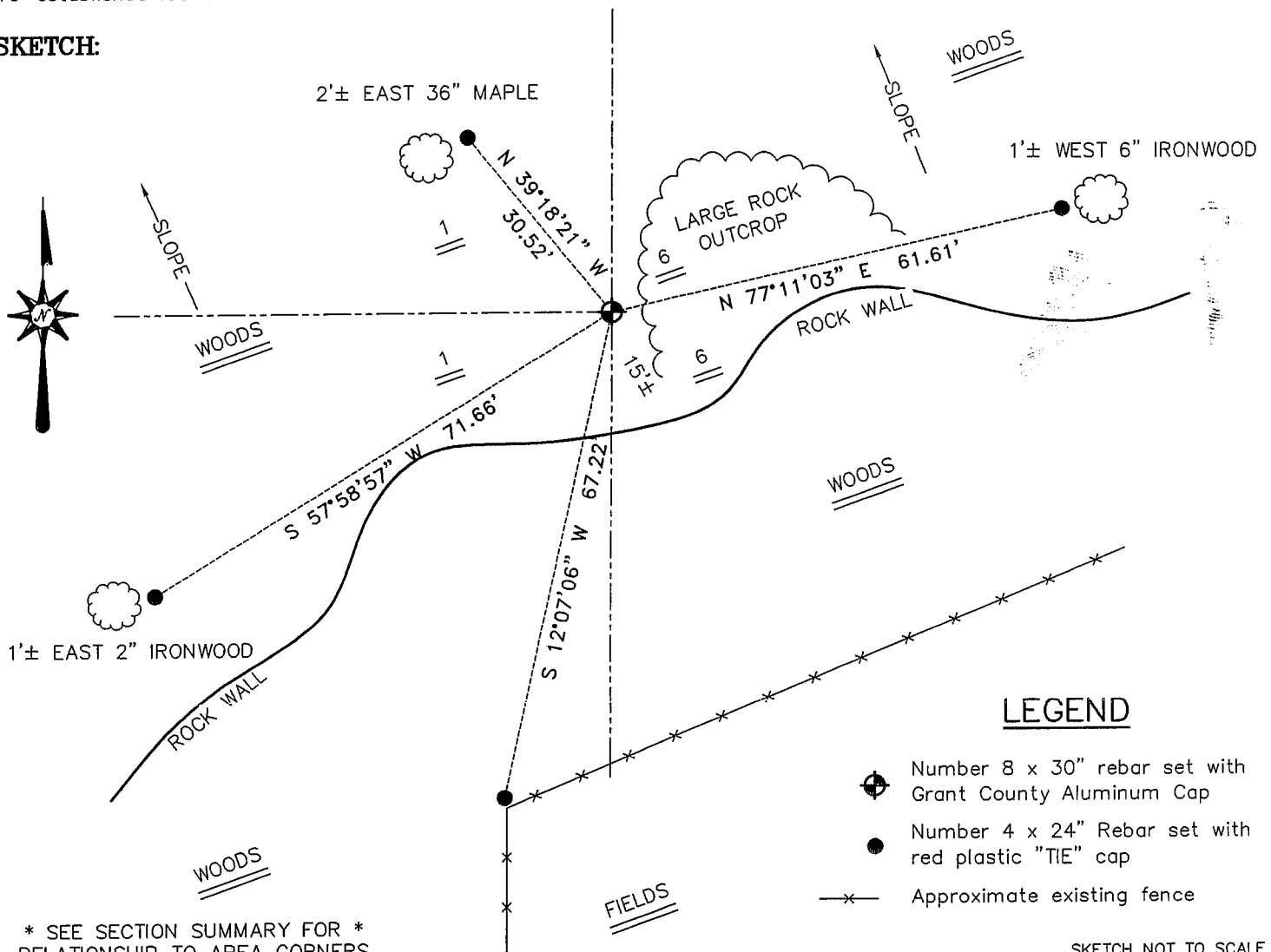
Corner was originally set in 1832 by Sibley. In 1909 J.C. Scott found both original bearing trees. No other record of the corner was found.

DESCRIPTION OF CORNER EVIDENCE FOUND

The corner was set proportionately and on-line between the Northeast and Southeast corners of Section 1, T6N R4W. Verified this location using EDM & GPS methods.

DESCRIPTION OF CORNER AND WITNESS MONUMENTS, references and accessories used to perpetuate the original or re-established location of this corner. Witnesses to corner location Bobby Sedgwick & Shane Austin & Brad Digman

SKETCH:



* SEE SECTION SUMMARY FOR *
 RELATIONSHIP TO AREA CORNERS

SKETCH NOT TO SCALE

AUSTIN ENGINEERING, LLC

4211 HWY 81 EAST, LANCASTER, WI 53813
 PHONE 608-723-6363 FAX 608-723-6702

FIELDBOOK: SDR33, 2227
 G: \T6NR4W\01
 C: \SWA\TIE\T6NR4W\20
 JOB NUMBER 02S369

DRAWN BY: SW AUSTIN
 APPROVED: LL AUSTIN

CORNER NUMBER 20