

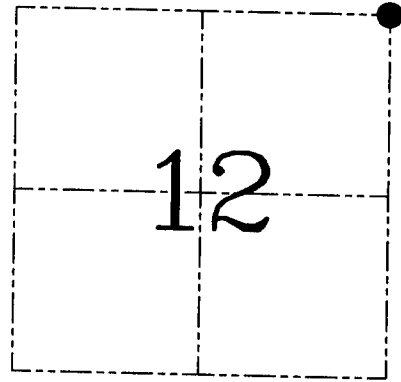
U.S. PUBLIC LAND SURVEY MONUMENT RECORD – GRANT COUNTY, WI
Section 12, Town 6 North Range 4 West, Town of Mount Hope

CERTIFICATE

I, Larry L. Austin, do hereby certify that the corner location on this record was determined by me and/or under my direct supervision and that this U.S. public land survey monument record is correct and complete to the best of my knowledge and belief.

Dated this 1st day of November, 2002

Larry L. Austin
 Larry L. Austin S-1903



● = CORNER LOCATION

HISTORY OF CORNER ESTABLISHMENT

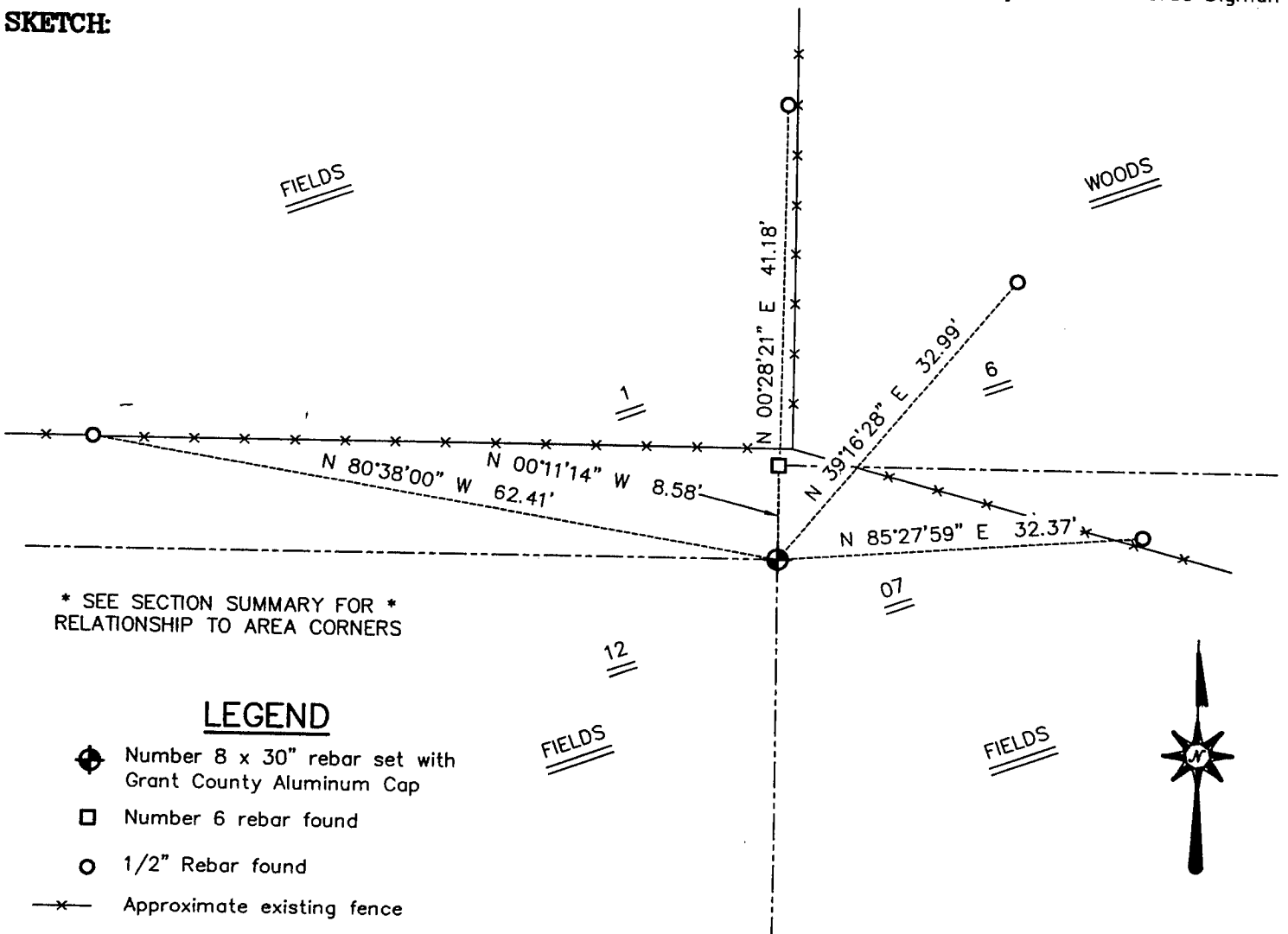
Corner was originally set in 1832 by Sibley.
 No other record of the corner was found.

DESCRIPTION OF CORNER EVIDENCE FOUND

I reset the corner at the recorded offset from the Northwest corner of Section 7. Verified this location using EDM & GPS methods.

DESCRIPTION OF CORNER AND WITNESS MONUMENTS, references and accessories used to perpetuate the original or re-established location of this corner. Witnesses to corner location Bobby Sedgwick & Shelby Blindert & Brad Digman

SKETCH:



* SEE SECTION SUMMARY FOR *
 RELATIONSHIP TO AREA CORNERS

LEGEND

- Number 8 x 30" rebar set with Grant County Aluminum Cap
- Number 6 rebar found
- 1/2" Rebar found
- x- Approximate existing fence

SKETCH NOT TO SCALE

AUSTIN ENGINEERING, LLC
 4211 HWY 81 EAST, LANCASTER, WI 53813
 PHONE 608-723-6363 FAX 608-723-6702

FIELDBOOK: SDR33, 2232
 G: \T6NR4W\12
 C: \SWA\TIE\T6NR4W\12
 JOB # 02S304

DRAWN BY: SW AUSTIN
 APPROVED: LL AUSTIN

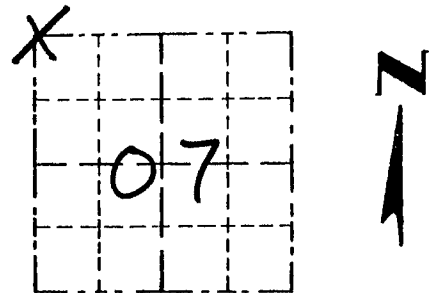
CORNER NUMBER 21

Survey Monument Record

TYPE OF MONUMENT 3/4" X 24" IRON BAR SET

CORNER NO. 33
SECTION 07
TOWN 6N
RANGE 3W

FIELD BOOK: 97-10
PAGE (2)



LOCATION
(Indicated by "X")

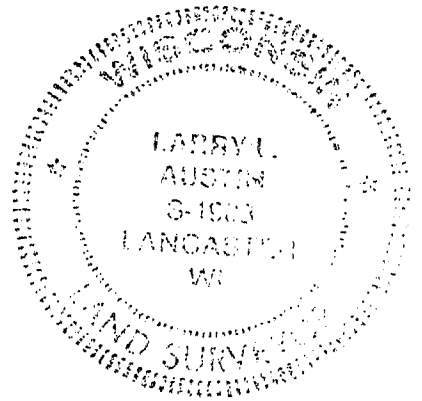
BASIS FOR MONUMENT LOCATION

(Use reverse side if necessary)

Show info such as: History of corner, with reference to Vol. and pg., dates, surveyor; exact description of monument replaced; if location computed, by taped or EDM traverse; landowner, remarks, etc.

SEAL:

CORNER WAS SET IN 1833 BY HARVEY PARKE. IN 1909 J.C. SCOTT SET A STONE AT THE CORNER. THE STONE WAS NOT FOUND. I FOUND AN OCCUPIED FENCE CORNER ACCEPTED IT AFTER EDM TRAVERSE OF AREA.



CERTIFIED CORRECT

Larry L. Austin
Registered Land Surveyor

DATE: 4-10-98

TIE SKETCH

Show at least three (3) ties and monument

LEGEND

- ⊕ 3/4" X 24" IRON BAR SET
- 1/2" X 15" IRON BAR SET
- XX EXISTING FENCE

