

U.S. PUBLIC LAND SURVEY MONUMENT RECORD

(AS REQUIRED BY s.A-E 7.08, WI. ADM. CODE)

HISTORY OF ORIGINAL CORNER ESTABLISHMENT AND SUBSEQUENT RESTORATIONS AND DESCRIPTION OF ANY RECORD, MONUMENT, OCCUPATION, TESTIMONIAL OR OTHER EVIDENCE CONSIDERED:

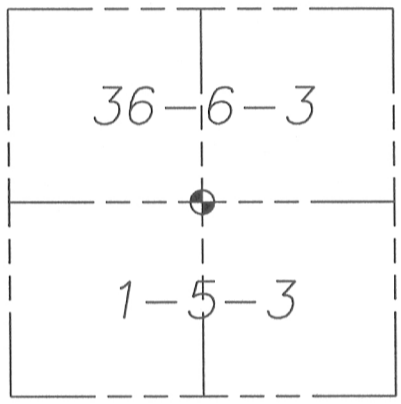
NO RECORD EVIDENCE FOUND. CHECKING WITH LOCAL SURVEYORS, I WAS UNABLE TO SUBSTANTIATE A METAL DETECTOR READING LOCATED 0.8'W & 7'N OF SET CORNER.

A MAG ALLOY WAS SET EQUAL DISTANCE BETWEEN FOUND MONUMENTS AT THE NW CORNER AND NE CORNER OF THE SECTION. SEE SKETCH BELOW.

CORNER WAS: (CHECK ALL THAT APPLY)

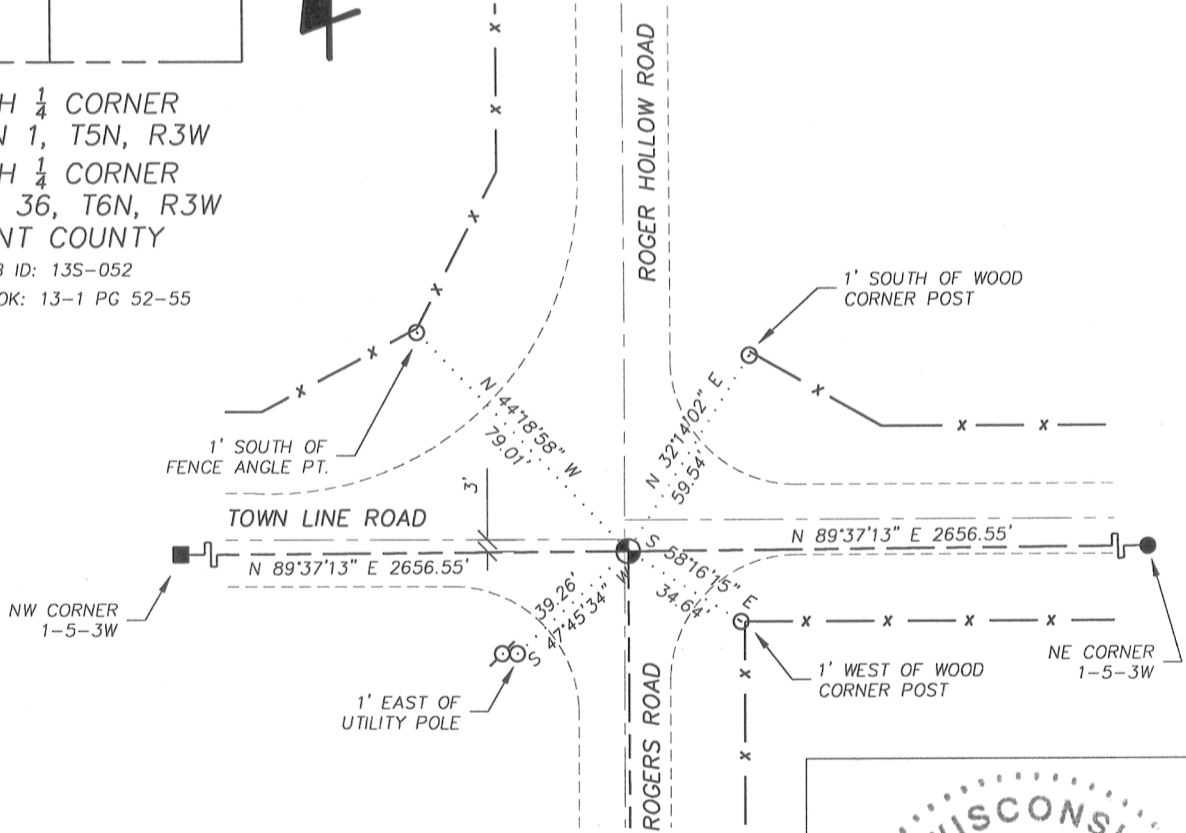
- RESTORED THROUGH ACCEPTANCE OF AN OBLITERATED EVIDENCE LOCATION.
- RESTORED THROUGH ACCEPTANCE OF A FOUND PERPETUATED LOCATION.
- CONSIDERED A LOST CORNER AND REESTABLISHED THROUGH LOST CORNER PROPORTIONATE METHODS (INCLUDE A PLAN VIEW DRAWING SHOWING BEARING & DISTANCE TO OTHER PUBLIC LAND SURVEY CORNERS USED FOR PROPORTIONING AND DETERMINING THE CORNER LOCATION)
- RESTORED OR REESTABLISHED IN A LOCATION THAT DIFFERS FROM A PREVIOUS RESTORATION OR REESTABLISHMENT (INCLUDE A PLAN VIEW DRAWING AND INDICATE WHAT WAS SET AND/OR FOUND)

COORDINATES ARE ESTABLISHED TO THE CORNER AND WITNESS TIES AS SHOWN BELOW:
(BEARING REFERENCE AND COORDINATES ARE LAFAYETTE COUNTY COORDINATE SYSTEM AS DEFINED BY WI-DOT)



- LEGEND**
- MAG ALLOY NAIL SET IN PAVEMENT
 - GRANT CO. ALUM. MONUMENT FOUND
 - 3/4"Ø REBAR FOUND
 - 5/8"Ø REBAR SET
 - UTILITY POLE
 - FENCE LINE

NORTH 1/4 CORNER
SECTION 1, T5N, R3W
SOUTH 1/4 CORNER
SECTION 36, T6N, R3W
GRANT COUNTY
JOB ID: 13S-052
FIELD BOOK: 13-1 PG 52-55

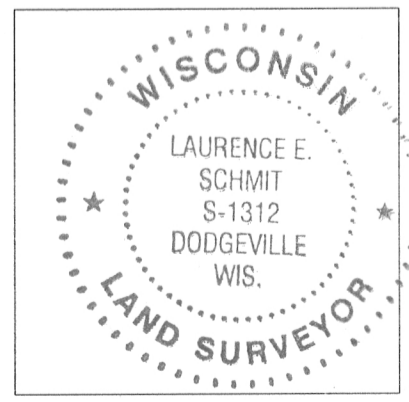


I, LAURENCE E SCHMIT CERTIFY THAT THE CORNER LOCATION SHOWN ON THIS RECORD WAS DETERMINED BY ME OR UNDER MY DIRECTION AND CONTROL AND THAT THIS U.S. PUBLIC LAND SURVEY MONUMENT RECORD IS CORRECT AND COMPLETE TO THE BEST OF MY KNOWLEDGE AND BELIEF.

Laurence E Schmit 8-23-13

LAURENCE E. SCHMIT, RLS-1312

DATE



SEP 06 2013