

U.S. PUBLIC LAND SURVEY MONUMENT RECORD - GRANT COUNTY, WI

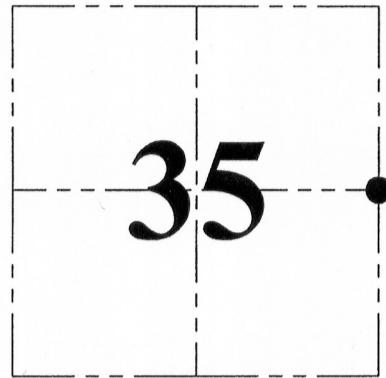
Section 35, Town 6 North Range 3 West, Town of Mount Ida

CERTIFICATE:

I, Aaron J. Austin, do hereby certify that the corner location on this record was determined by me and/or under my direct supervision and that this U.S. Public Land Survey Monument Record is correct and complete to the best of my knowledge and belief.

Dated this 20th day of FEBRUARY, 2013.

Aaron J. Austin
Aaron J. Austin, S-2922



● = CORNER LOCATION

HISTORY OF CORNER ESTABLISHMENT:

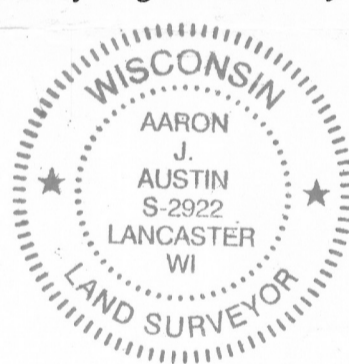
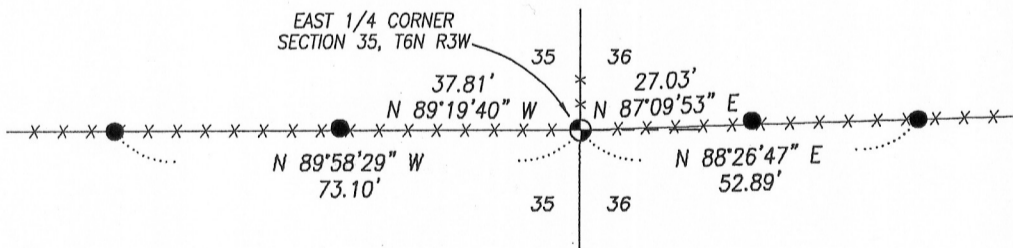
Corner originally set in 1833 by Harvey Parke.
No other record found for this corner.

DESCRIPTION OF CORNER EVIDENCE FOUND:

I found and accepted an existing fence corner with existing fence East-West and existing fence wire which was cut that headed North from fence post. I verified its location utilizing G.P.S. and E.D.M. methods.

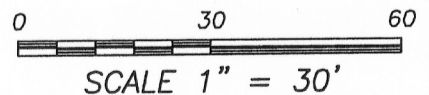
DESCRIPTION OF CORNER AND WITNESS MONUMENTS, references and accessories used to perpetuate the original or re-established location of this corner. Witnesses to corner location Bobby Sedgwick and Shelby Blindert.

SKETCH:



LEGEND

- No. 8 x 24" rebar set with Grant County Aluminum Cap
- Number 4 x 24" Rebar set with red plastic "TIE" cap
- x-x- Approximate existing fence



4211 HWY 81 E, LANCASTER, WI 53813
PHONE: 608-723-6363 FAX: 608-723-6702

JOB NO: 12s256
G:\T5NR2W\02
H:\TIE\T6NR3W\119

FIELDBOOK: TDSR
DRAWN BY: AJ AUSTIN
CREW: BS-SB