

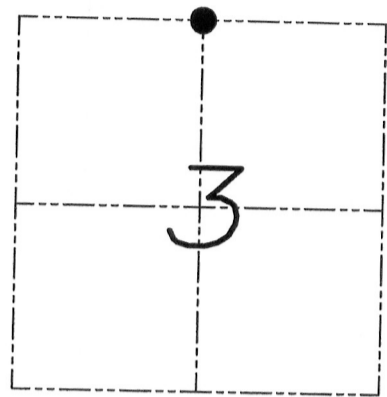
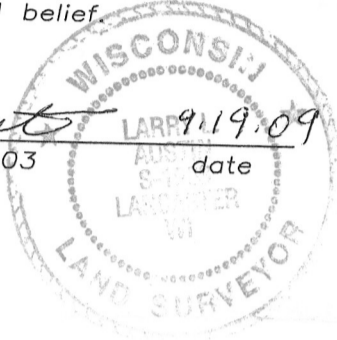
U.S. PUBLIC LAND SURVEY MONUMENT RECORD

Section 3, Town 5 North Range 3 West, Town of North Lancaster, Grant County, Wisconsin

CERTIFICATE

I, Larry L. Austin, do hereby certify that the corner location on this record was determined by me and/or under my direct supervision and that this U.S. public land survey monument record is correct and complete to the best of my knowledge and belief.

Larry L. Austin
 Larry L. Austin, S-1903 9/19/09 date



● = CORNER LOCATION

HISTORY OF CORNER

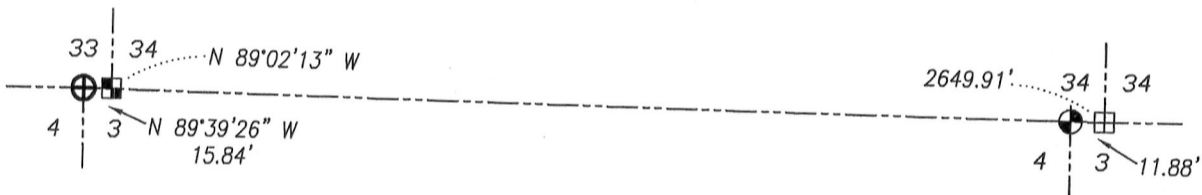
Corner was never originally set.
 No other record of the corner was found.

CORNER EVIDENCE FOUND

Corner was set at the proportional offset between the South 1/4 corner of Section 34 and the Southwest corner of Section 34. Verified location by E.D.M. and G.P.S. methods.

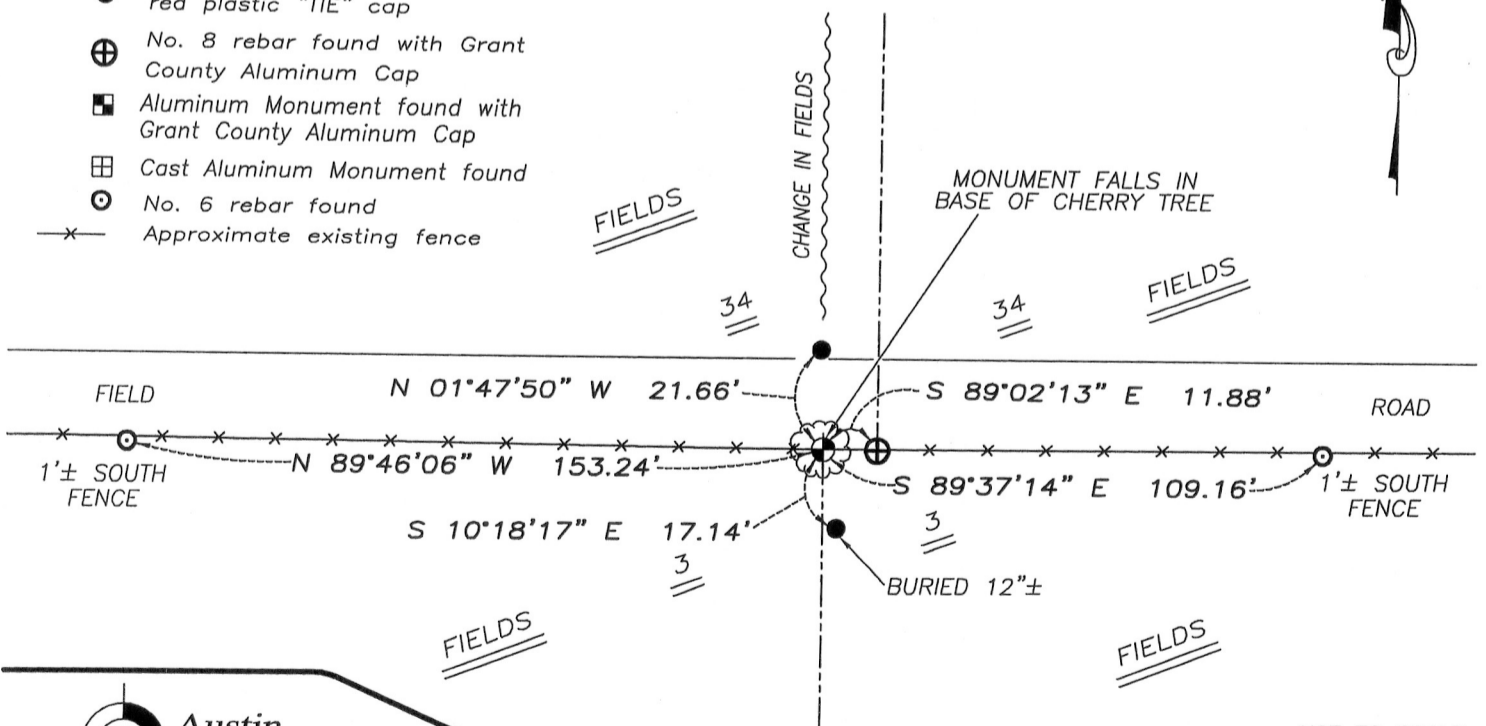
DESCRIPTION OF CORNER AND WITNESS MONUMENTS, references and accessories used to perpetuate the original or re-established location of this corner. Witnesses to monument location Bobby Sedgwick & Brad Digman & Shane Austin

SKETCH:



LEGEND

- ⊕ Number 8 x 30" rebar set with Grant County Aluminum cap
- Number 4 x 24" Rebar set with red plastic "TIE" cap
- ⊕ No. 8 rebar found with Grant County Aluminum Cap
- ⊞ Aluminum Monument found with Grant County Aluminum Cap
- ⊞ Cast Aluminum Monument found
- ⊙ No. 6 rebar found
- x- Approximate existing fence



NOT TO SCALE

Austin Engineering LLC
 austinengineeringllc.com

4211 HWY 81 E, LANCASTER, WI 53813
 PHONE: 608-723-6363 FAX: 608-723-6702

JOB NUMBER 09S194-HELMS
 FIELDBOOK: TDSR, 2810B
 G:\T5NR3W\02
 H:\TIE\T5NR3W\06

DRAWN BY: SW AUSTIN
 APPROVED: LL AUSTIN

06

JAN 23 2012

U. S. PUBLIC LAND SURVEY MONUMENT RECORD

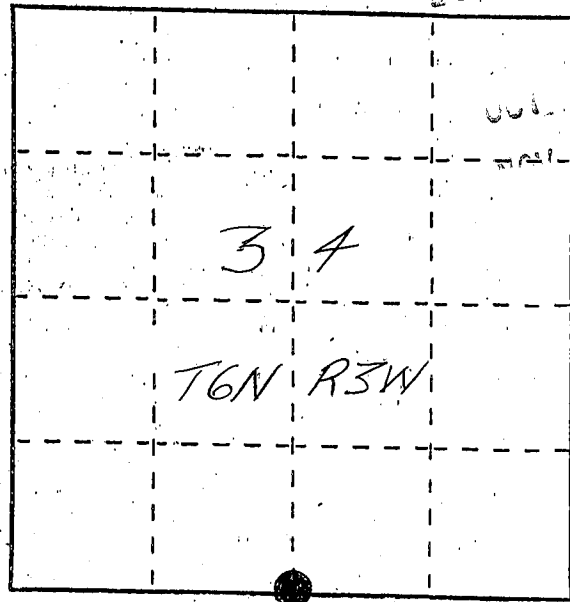
INSTRUCTIONS:

This record shall show the location of the corner and shall include all of the following nine elements (a through i).

(a) Identify the corner by reference to the U.S. public land survey system.

● = Corner monument restored.

The South Quarter corner of Section 34, Town 6 North, Range 3 West, Mount Ida Township, Grant County, Wisconsin.



(b) Describe any record evidence, monument evidence, occupational evidence, testimonial evidence or any other material evidence you considered, and whether the monument was found or placed.

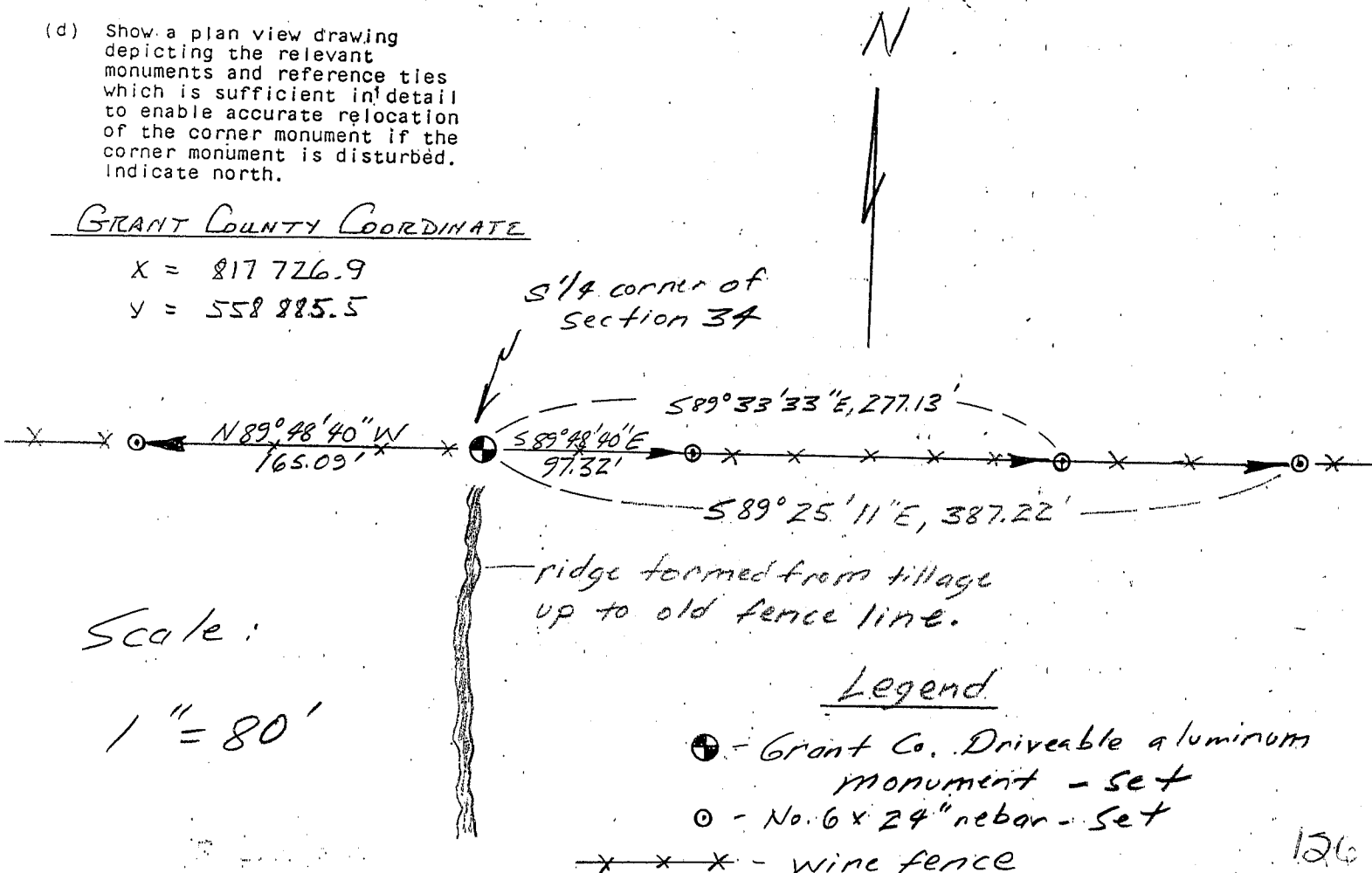
Corner was set from existing physical evidence of an East/West fence for North/South location and proportionate measurement for East/West location.

(c) In the plan view drawing below, provide reference ties to at least 4 witness monuments, or, if the location is within a municipality, to at least 2 witness monuments. (Witness monuments shall be made of concrete, natural stone, iron or other equally durable material, ~~except~~ wood.) Describe witness monuments.

(d) Show a plan view drawing depicting the relevant monuments and reference ties which is sufficient in detail to enable accurate relocation of the corner monument if the corner monument is disturbed. Indicate north.

GRANT COUNTY COORDINATE

X = 817 726.9
Y = 558 885.5



(e) Describe any material discrepancy between the location of the corner as restored or reestablished and the location of that corner as previously restored or reestablished by distance and direction. Show the discrepancy on the plan view drawing under (d), above. Show the distances between the corner as previously restored or reestablished and (1) the corner as restored or reestablished, and (2) to at least 2 of the witness monuments shown on the drawing in (d), above.

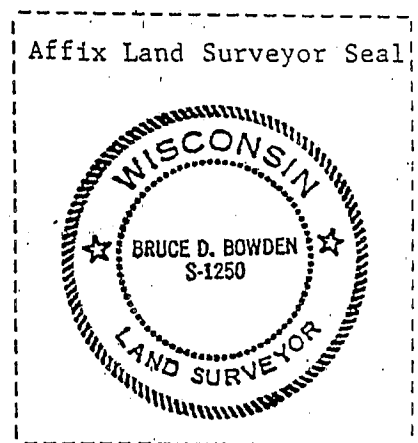
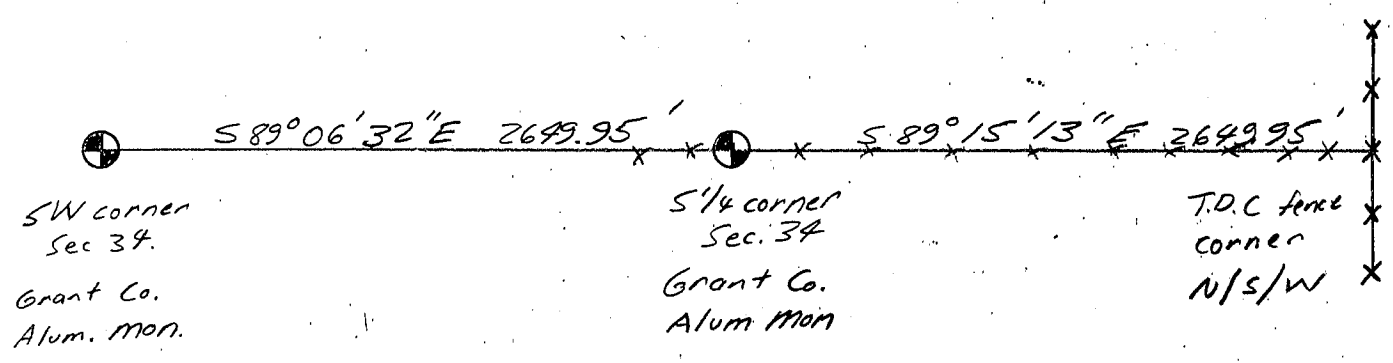
None

(f) Was the corner restored through acceptance of (1) an obliterated evidence location, or, (2) a found perpetuated location?

1) An obliterated evidence location.

(g&h) Was the corner reestablished through lost corner proportionate methods? If so, show the method, including the directions and distances to other public land survey corners used as evidence or used for proportioning in determining the corner location?

Single proportionate measurement.



(i) I, BRUCE D. BOWDEN,
 (type or print name) certify that the corner location shown on this record was determined by me or under my direction and control and that this U.S. Public Land Survey Monument Record is correct and complete to the best of my knowledge and belief.

Bruce D. Bowden Oct 23, 1996
 Signature Date