

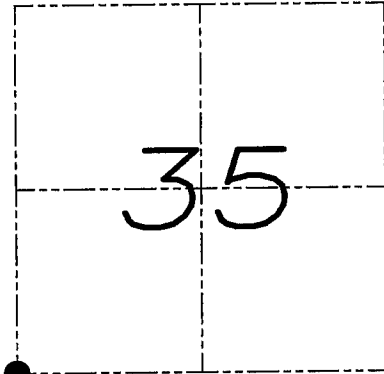
# U.S. PUBLIC LAND SURVEY MONUMENT RECORD

Section 35, Town 6 North Range 3 West, Town of Mount Ida, Grant County, Wisconsin

## CERTIFICATE

I, Larry L. Austin, do hereby certify that the corner location on this record was determined by me and/or under my direct supervision and that this U.S. public land survey monument record is correct and complete to the best of my knowledge and belief.

*Larry L. Austin*  
Larry L. Austin, S-1903



● = CORNER LOCATION

## HISTORY OF CORNER

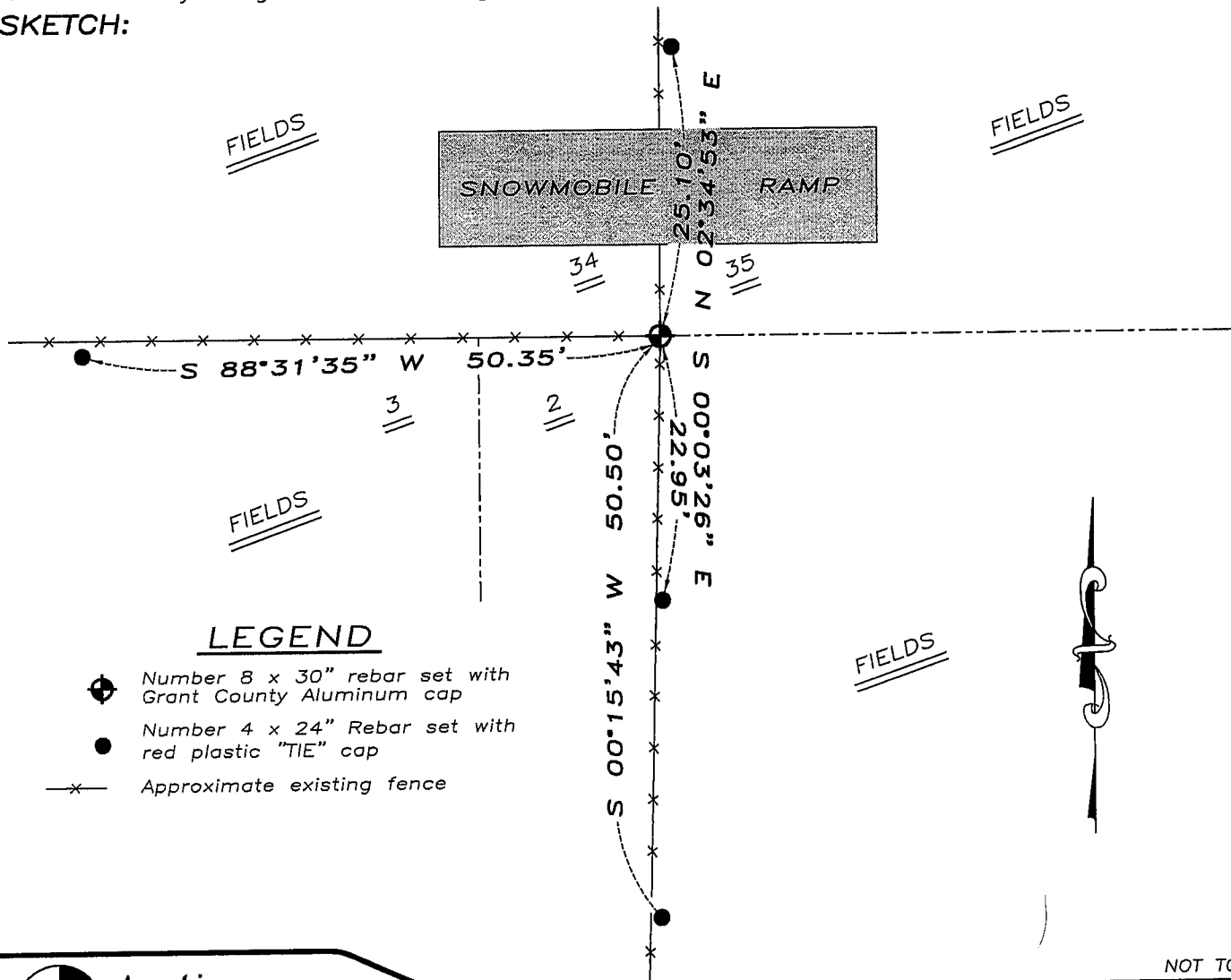
Corner was originally set by Lyon.  
No other record of the corner was found.

## CORNER EVIDENCE FOUND

I was unable to locate any evidence of the original corner. I reset the corner based on occupational evidence as shown below. Verified this location using EDM & GPS methods.

DESCRIPTION OF CORNER AND WITNESS MONUMENTS, references and accessories used to perpetuate the original or re-established location of this corner. Witnesses to monument location Bobby Sedgwick & Brad Digman & Shane Austin

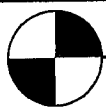
## SKETCH:



## LEGEND

- Number 8 x 30" rebar set with Grant County Aluminum cap
- Number 4 x 24" Rebar set with red plastic "TIE" cap
- x- Approximate existing fence

NOT TO SCALE



**Austin Engineering LLC**

4211 HWY 81 E, LANCASTER, WI 53813  
PHONE 608-723-6363 FAX 608-723-6702

JOB NUMBER 07S238  
FIELDBOOK: TDSR, 2705  
G:\T5NR3W\02  
H:\TIE\T6NR3W\125

DRAWN BY: SW AUSTIN  
APPROVED: LL AUSTIN

125