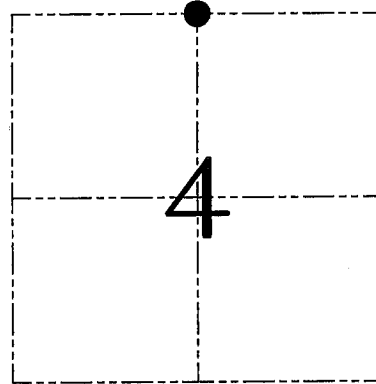


U.S. PUBLIC LAND SURVEY MONUMENT RECORD – GRANT COUNTY, WI
Section 4, Town 5 North Range 3 West, Town of North Lancaster

CERTIFICATE

I, Larry L. Austin, do hereby certify that the corner location on this record was determined by me and/or under my direct supervision and that this U.S. public land survey monument record is correct and complete to the best of my knowledge and belief.

Larry L. Austin
 Larry L. Austin, S-1903



● = CORNER LOCATION

HISTORY OF CORNER ESTABLISHMENT

Corner was never originally set. In 1859 Blauding tied to the corner with no mention of monument. No recent record of the corner was found.

DESCRIPTION OF CORNER EVIDENCE FOUND

Corner was reset based on an existing North-South fence. This location fit other corners in the area. Verified this location using EDM & GPS methods.

DESCRIPTION OF CORNER AND WITNESS MONUMENTS, references and accessories used to perpetuate the original or re-established location of this corner. Witnesses to corner location Bobby Sedgwick & Brad Digman & Shane Austin

SKETCH:



FIELDS

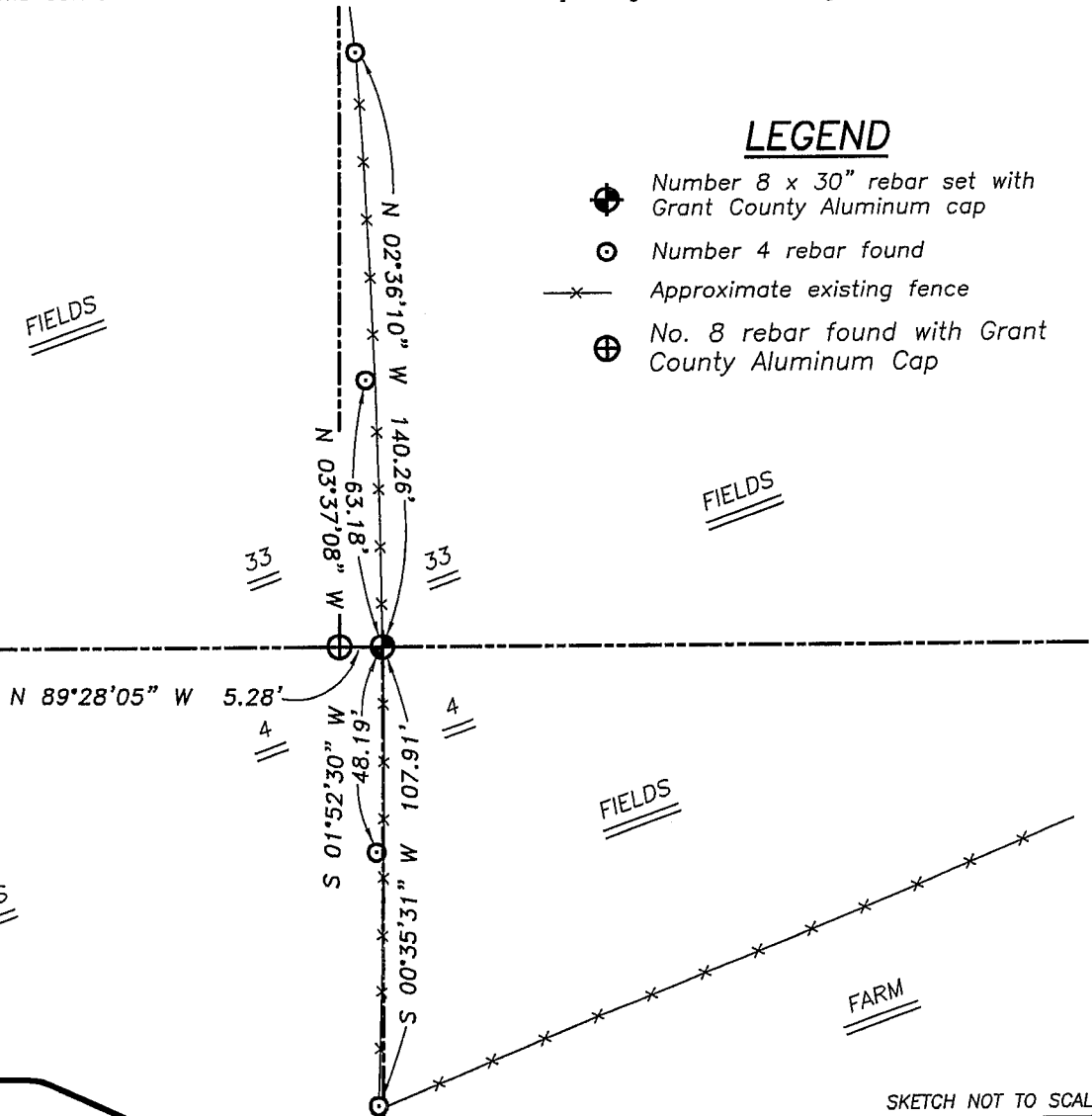
FIELDS

FIELDS

FARM

LEGEND

- ⊕ Number 8 x 30" rebar set with Grant County Aluminum cap
- ⊙ Number 4 rebar found
- x— Approximate existing fence
- ⊕ No. 8 rebar found with Grant County Aluminum Cap



Austin Engineering LLC

4211 HWY 81 E, LANCASTER, WI 53813
 PHONE 608-723-6363 FAX 608-723-6702

JOB NUMBER 06S172
 FIELDBOOK: TDSR, 2705
 G:\T6NR3W\33A
 H:\TIE\T5NR3W\08

DRAWN BY: SW AUSTIN
 APPROVED: LL AUSTIN

08

GRANT COUNTY CERTIFIED LAND CORNER

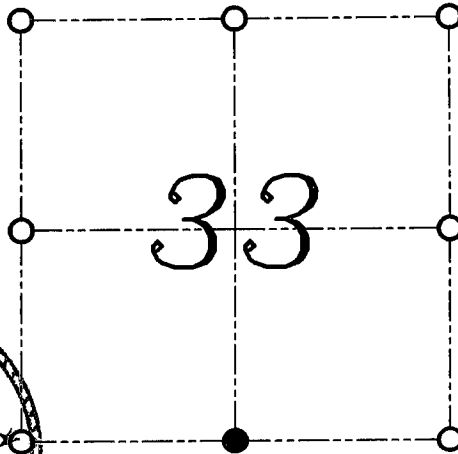
CORNER NUMBER 128

CERTIFICATE:

I, Larry L. Austin, do hereby certify that on the 13th day of January, 2000, I found no evidence of the South 1/4 corner of Section 33, Town 6 North, Range 3 West, of the Fourth Principal Meridian, and I re-established said corner according to the Wisconsin Statutes as shown and described hereon.

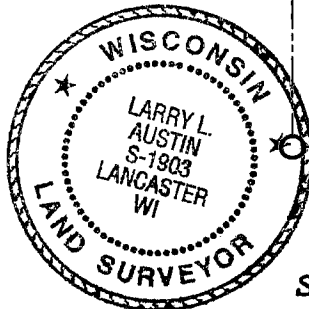
DATED THIS 21st DAY OF JANUARY, 2000

Larry L. Austin
Larry L. Austin S-1903



● = CORNER LOCATION

**SOUTH 1/4 CORNER OF
SECTION 33, T 6 N R 3 W
TOWN OF MOUNT IDA**



SEAL

HISTORY OF ORIGINAL CORNER ESTABLISHMENT:

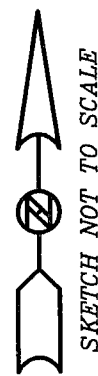
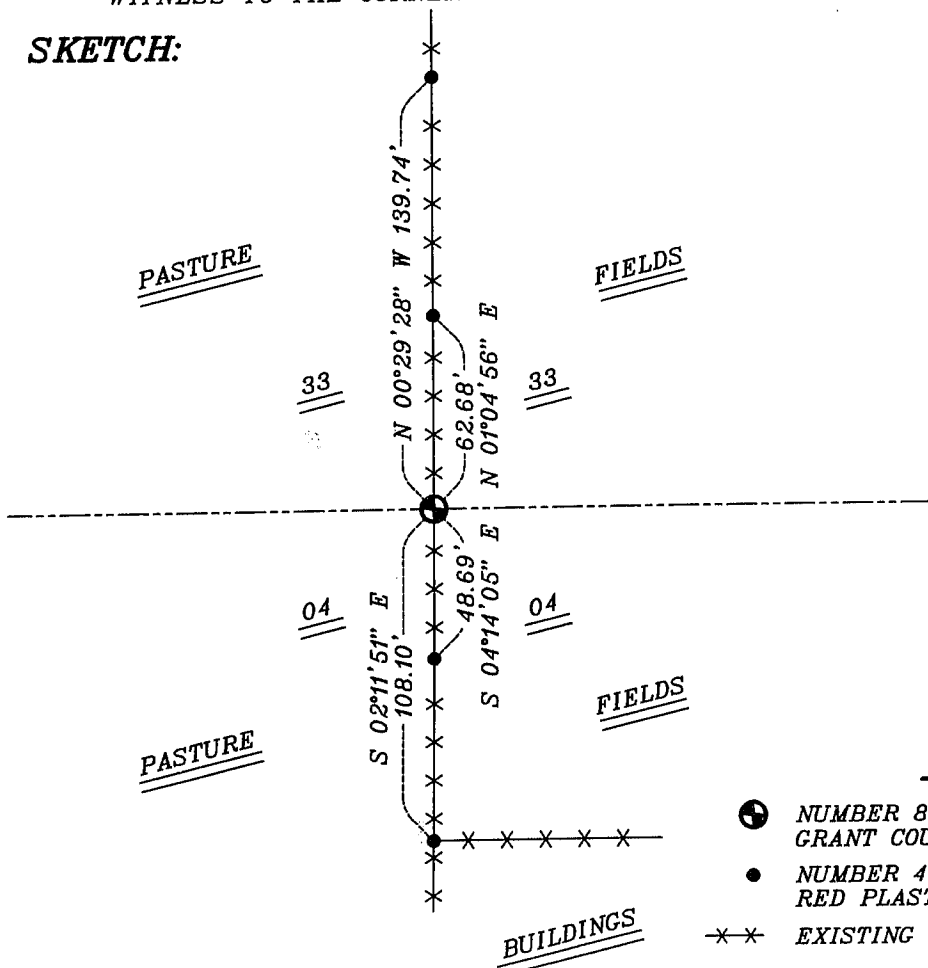
The original corner was set in 1832 by Lucius Lyon.
No other record of the corner was found.

DESCRIPTION OF CORNER EVIDENCE FOUND:

I found no evidence of the original corner. I reset the corner midway between the Southwest and Southeast corners. Verified this location using E.D.M. and G.P.S. methods.

DESCRIPTION OF CORNER AND WITNESS MONUMENTS, references and accessories used to perpetuate the original or re-established location of this corner
WITNESS TO THE CORNER LOCATION: SHANE AUSTIN ; BOBBY SEDGWICK

SKETCH:



LEGEND

- ⊕ NUMBER 8 X 30" REBAR SET WITH GRANT COUNTY ALUMINUM CAP
- NUMBER 4 X 24" REBAR SET WITH RED PLASTIC CAP
- *- EXISTING FENCE LOCATION