

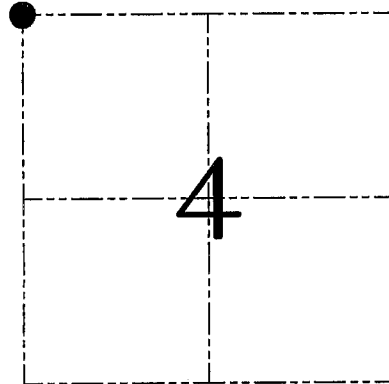
**U.S. PUBLIC LAND SURVEY MONUMENT RECORD – GRANT COUNTY, WI**

**Section 4, Town 5 North Range 3 West, Town of North Lancaster**

CERTIFICATE

I, Larry L. Austin, do hereby certify that the corner location on this record was determined by me and/or under my direct supervision and that this U.S. public land survey monument record is correct and complete to the best of my knowledge and belief.

*Larry L. Austin*  
 Larry L. Austin, S-1903



● = CORNER LOCATION

HISTORY OF CORNER ESTABLISHMENT

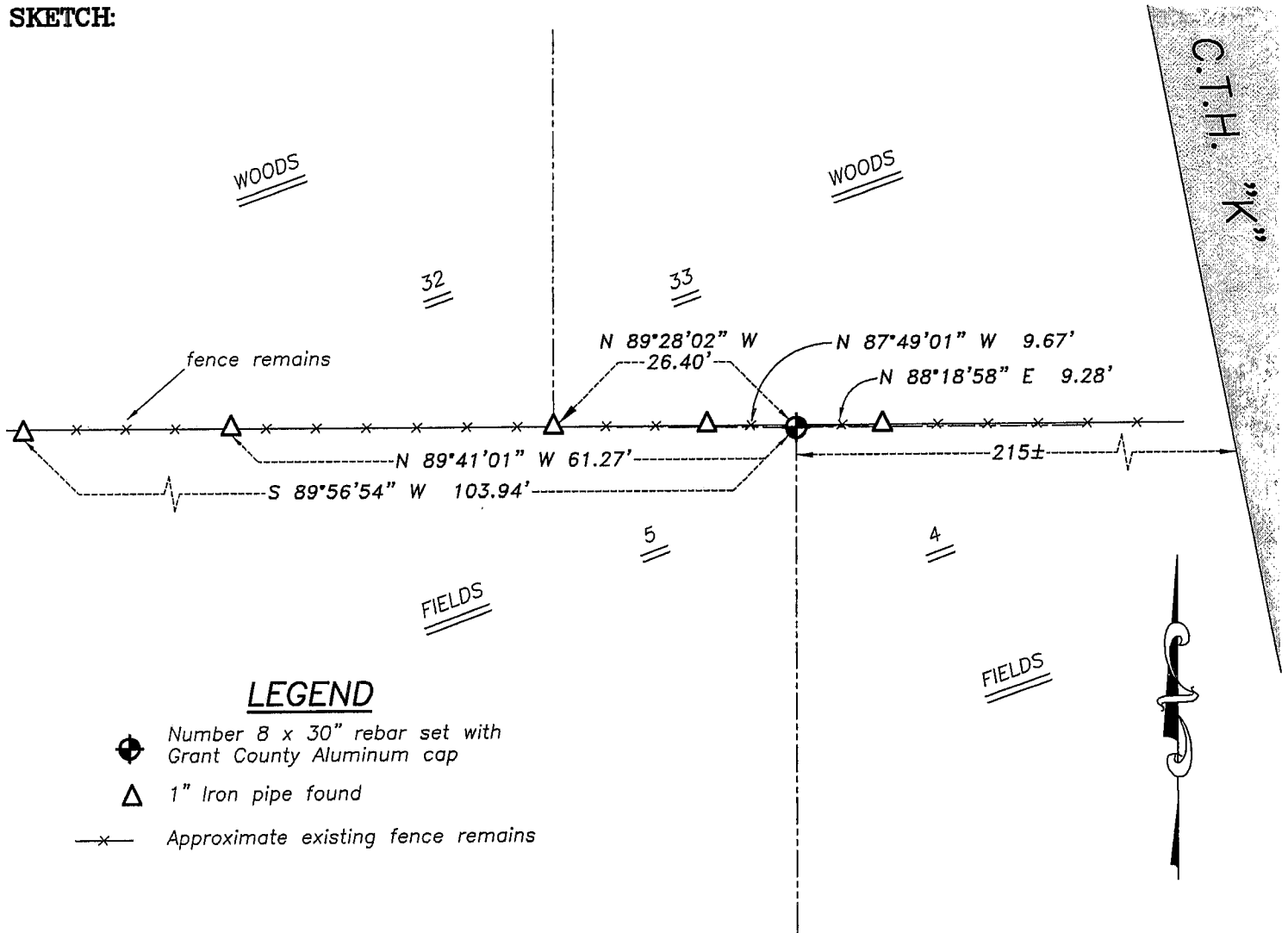
Corner was originally set in 1832 by Parke. In 1859 Blauding tied to the corner with no mention of monument. No other record of the corner was found.

DESCRIPTION OF CORNER EVIDENCE FOUND

I found the existing Southwest corner of Section 33, T6N R3W and set this corner at the recorded offset. Verified this location using EDM & GPS methods.

DESCRIPTION OF CORNER AND WITNESS MONUMENTS, references and accessories used to perpetuate the original or re-established location of this corner. Witnesses to corner location Bobby Sedgwick & Brad Digman & Shane Austin

**SKETCH:**



**LEGEND**

- Number 8 x 30" rebar set with Grant County Aluminum cap
- △ 1" Iron pipe found
- x— Approximate existing fence remains

SKETCH NOT TO SCALE



**Austin Engineering LLC**

4211 HWY 81 E, LANCASTER, WI 53813  
 PHONE 608-723-6363 FAX 608-723-6702

JOB NUMBER 06S172  
 FIELDBOOK: TDSR, 2705  
 G:\T6NR3W\33A  
 H:\TIE\T5NR3W\09

DRAWN BY: SW AUSTIN  
 APPROVED: LL AUSTIN

**09**

# GRANT COUNTY

## Survey Monument Record

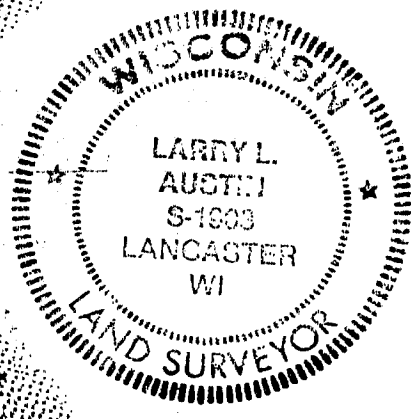
CORNER NO. 129  
SECTION 32  
TOWN 6N  
RANGE 3W  
**SE COR**

TYPE OF MONUMENT 1" IRON PIPE FOUND  
STATE PLANE COORDINATES: N \_\_\_\_\_  
E \_\_\_\_\_  
ELEVATION — M.S.L. DATUM: \_\_\_\_\_  
THETA ANGLE: \_\_\_\_\_  
FIELD BOOK: 94-15  
PAGE 11



LOCATION  
(Indicated by "●")

SEAL:



### BASIS FOR MONUMENT LOCATION

(Use reverse side if necessary)

Show info such as: History of corner, with reference to Vol. and pg., dates, surveyor; exact description of monument replaced; if location computed, by taped or EDM traverse; landowner, remarks, etc.

FOUND A 1" IRON PIPE  
SET BY HOMER RALPH IN  
1971; I VERIFIED ITS LOCATION  
& ACCEPTED IT; USED GPS  
& EDM METHODS

CERTIFIED CORRECT

Larry L. Austin  
Registered Land Surveyor

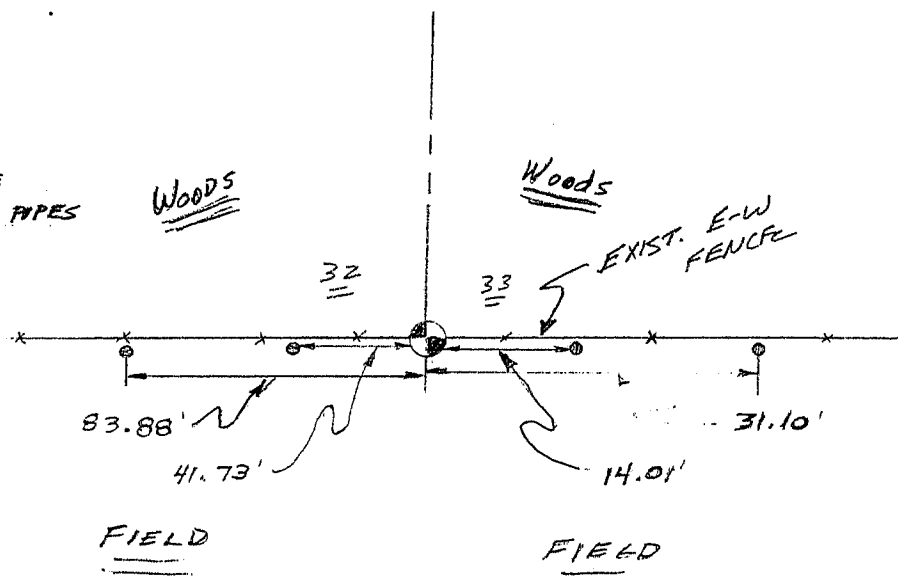
DATE: 9/20/94

### TIE SKETCH

Show at least three (3) ties and monument

#### LEGEND

- FND. 1" IRON PIPE  
10" ABOVE GRADE
- SET 1" x 24" IRON PIPES  
FLUSH



NO SCALE