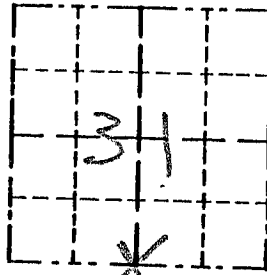


Survey Monument Record

TYPE OF MONUMENT 3/4" X 24" IRON BAR SET

CORNER NO. 132  
 SECTION 31  
 TOWN 6N  
 RANGE 3W

FIELD BOOK: 97-12  
 PAGE (10)



LOCATION  
 (Indicated by "X")

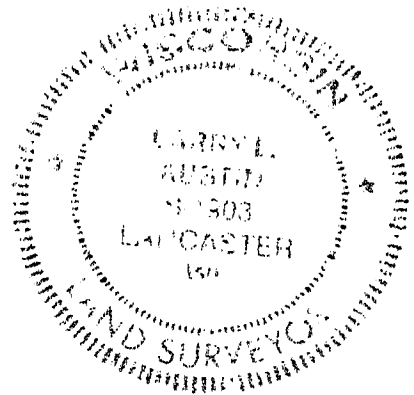
BASIS FOR MONUMENT LOCATION

(Use reverse side if necessary)

Show info such as: History of corner, with reference to Vol. and pg., dates, surveyor; exact description of monument replaced; if location computed, by taped or EDM traverse; landowner, remarks, etc.

SEAL:

CORNER SET IN 1832 BY SYLVESTER SIBLEY. NO RECORD FOUND SINCE ORIGINAL SURVEY. CORNER WAS SET AT A OCCUPIED LOCATION. CENTERLINE NORTH/SOUTH FOR EASTING. NOTHING IS EXISTING FENCE EAST/WEST. VERIFIED ITS LOCATION USING EDM METHODS.



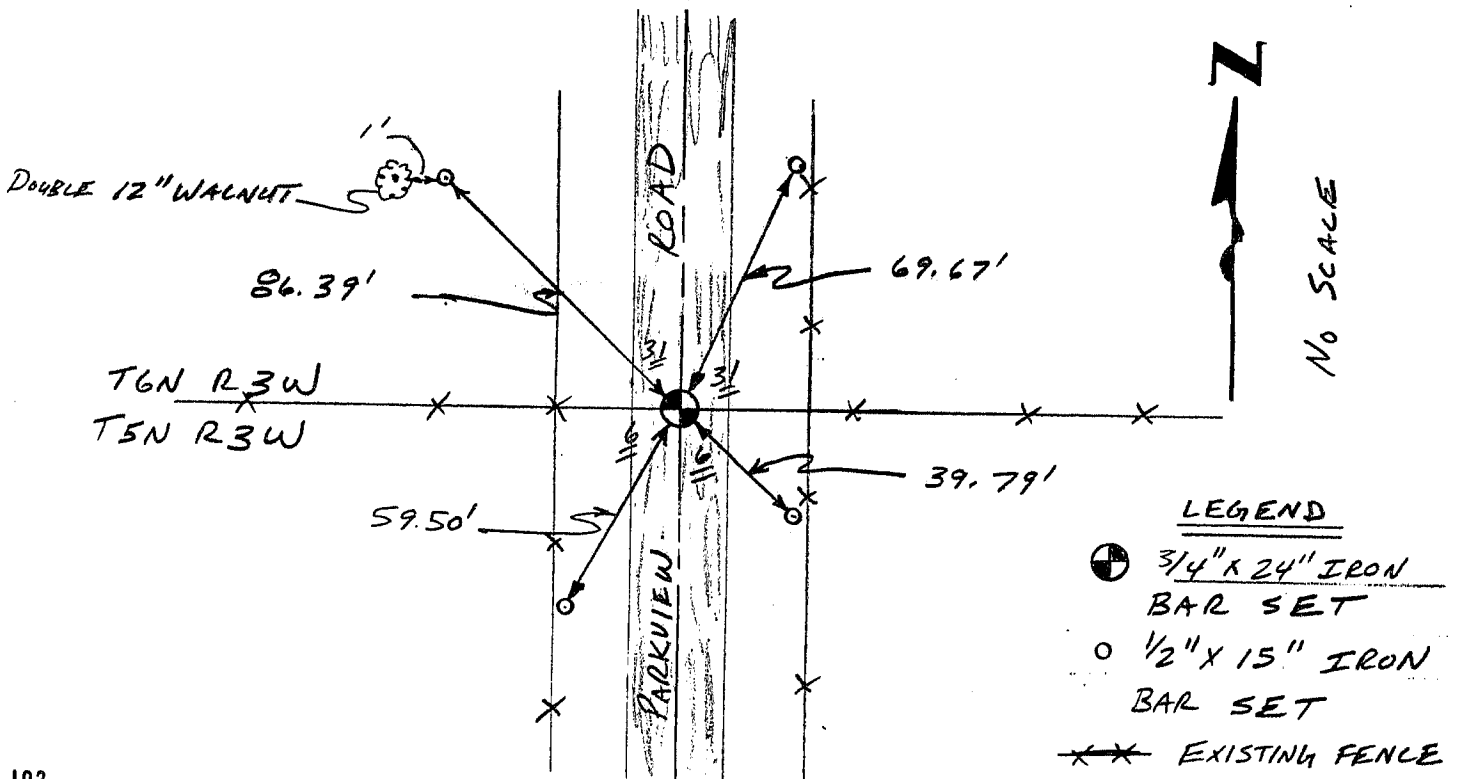
CERTIFIED CORRECT

*Larry L. Austin*  
 Registered Land Surveyor

DATE: 7/30/97

TIE SKETCH

Show at least three (3) ties and monument



LEGEND

- 3/4" X 24" IRON BAR SET
- 1/2" X 15" IRON BAR SET
- EXISTING FENCE