

JUL 1 1991

GOVERNMENT CORNER RECORD

SOUTHWEST CORNER, SECTION 29, TOWNSHIP 6 NORTH, RANGE 3 EAST - WEST,

TOWN, ~~GRANVILLE~~ OF MOUNT IDA

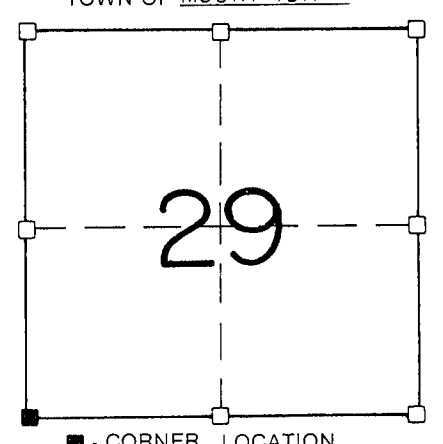
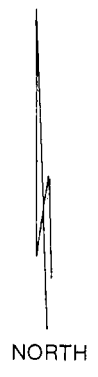
TYPE OF MONUMENT: 1" Ø X 67" IRON PIPE SET ELEVATION - M.S.L. DATUM

WITNESSES TO CORNER LOCATION

SEAN M. WALSH
PATRICK J. DEDERICH

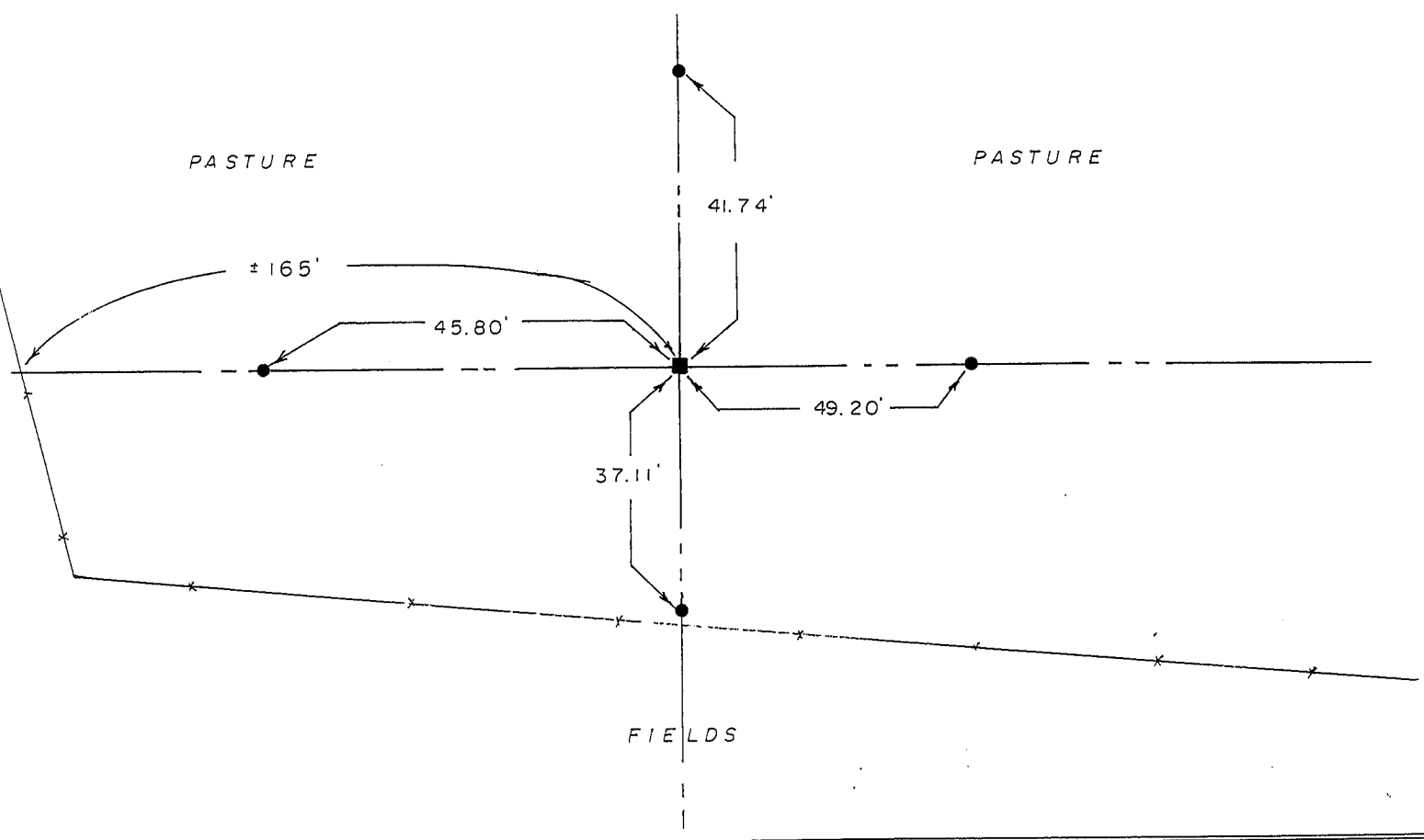
SECTION 29, T. 6 N, R. 3 EW

TOWN OF MOUNT IDA



- - CORNER LOCATION
- - 3/4" X 24" IRON ROD SET

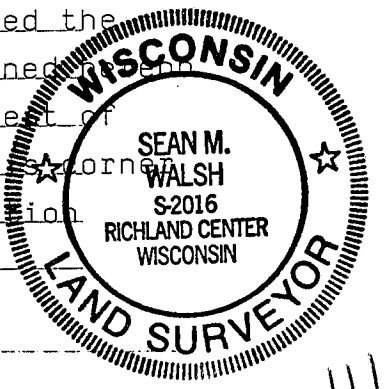
TIE SKETCH (SHOW ALL HELPFUL FEATURES)



SURVEYOR'S CERTIFICATE

SEAL S. 2016

I, Sean M. Walsh, DO HEREBY CERTIFY THAT I have established the above corner in accordance with the information contained and that this information is correct and true to the best of my information, knowledge and belief. I established the corner at a location that fits best with the West line of Section 29 through other occupied deeded corners in the area.



DATED THIS 6TH DAY OF JUNE, 1991

Sean M. Walsh
REGISTERED LAND SURVEYOR

111