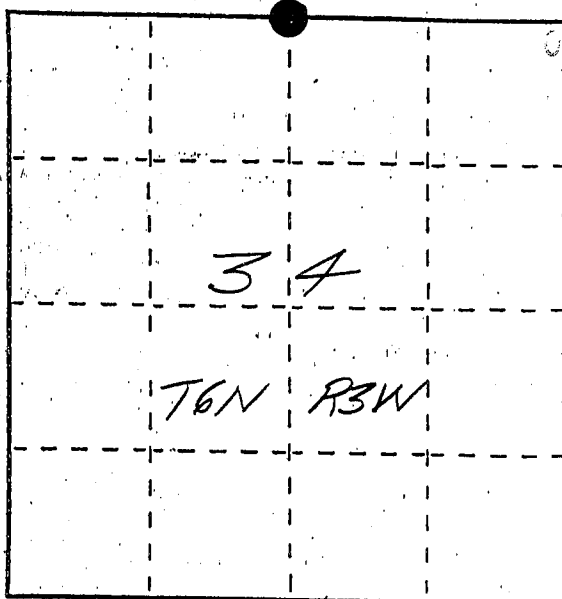


U. S. PUBLIC LAND SURVEY MONUMENT RECORD

INSTRUCTIONS: This record shall show the location of the corner and shall include all of the following nine elements (a through i).

- (a) Identify the corner by reference to the U.S. public land survey system.
- = Corner monument restored.

The North Quarter corner
of section 34, Town 6
North, Range 3 West,
Mount Ida Township,
Grant County, WI



- (b) Describe any record evidence, monument evidence, occupational evidence, testimonial evidence or any other material evidence you considered, and whether the monument was found or placed.

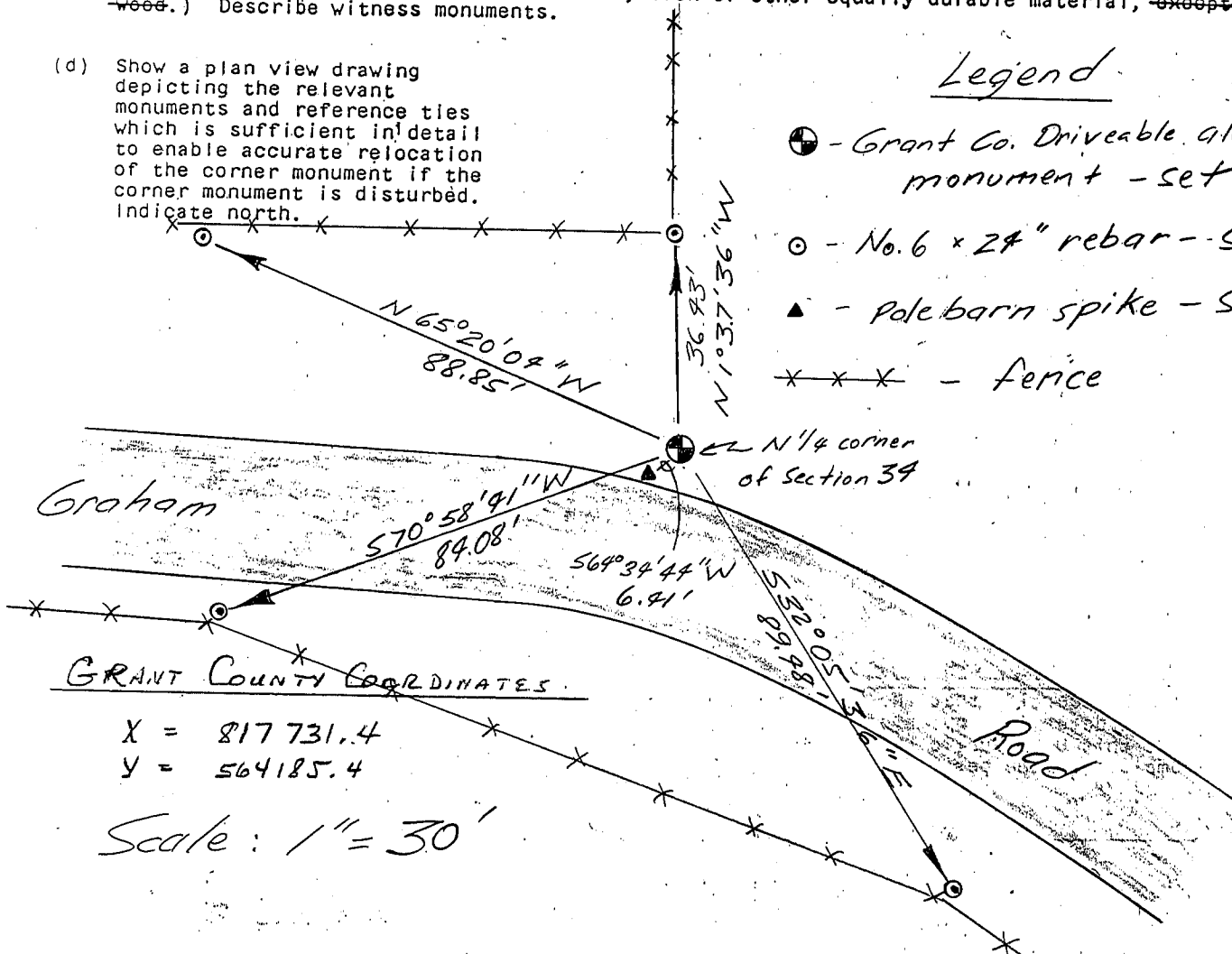
Corner was set from a tie to a survey
by John G Cejka - S 1222 dated September
20, 1982

- (c) In the plan view drawing below, provide reference ties to at least 4 witness monuments, or, if the location is within a municipality, to at least 2 witness monuments. (Witness monuments shall be made of concrete, natural stone, iron or other equally durable material, ~~except~~ wood.) Describe witness monuments.

- (d) Show a plan view drawing depicting the relevant monuments and reference ties which is sufficient in detail to enable accurate relocation of the corner monument if the corner monument is disturbed. Indicate north.

Legend

- - Grant Co. Driveable aluminum monument - set
- - No. 6 x 24" rebar - set
- ▲ - pole barn spike - set
- x x x - fence



GRANT COUNTY COORDINATES

X = 817 731.4
Y = 564185.4

Scale: 1" = 30'

