

# GRANT COUNTY

## Survey Monument Record

Mt. Ida Twp.

CORNER NO. 99  
 SECTION 26  
 TOWN 6 North  
 RANGE 3 West

TYPE OF MONUMENT 2" x 24" Round, Iron Pipe

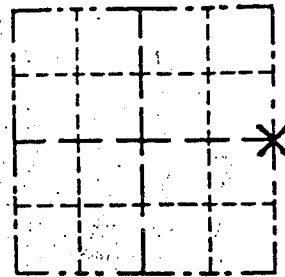
STATE PLANE COORDINATES: N \_\_\_\_\_  
 E \_\_\_\_\_

ELEVATION — M.S.L. DATUM: \_\_\_\_\_

THETA ANGLE: \_\_\_\_\_

FIELD BOOK: \_\_\_\_\_

PAGE \_\_\_\_\_



LOCATION  
(Indicated by "X")

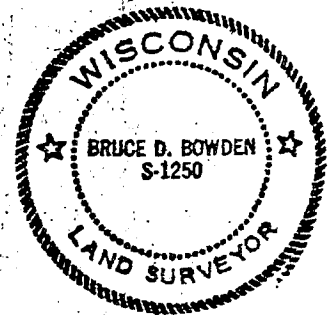
### BASIS FOR MONUMENT LOCATION

(Use reverse side if necessary)

Show info such as: History of corner, with reference to Vol. and pg., dates, surveyor; exact description of monument replaced; if location computed, by taped or EDM traverse; landowner, remarks, etc.

SEAL:

Corner located from existing physical evidence and proportionate measurement, as coordinated from an EDM traverse.



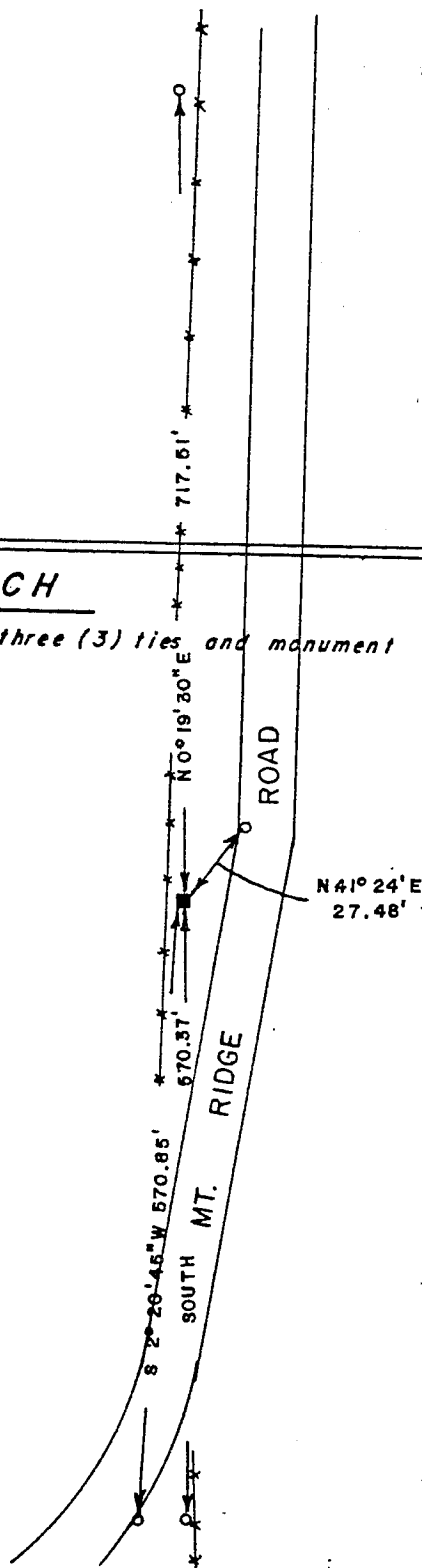
CERTIFIED CORRECT

*Bruce D. Bowden*  
 Registered Land Surveyor

DATE: August 1, 1984

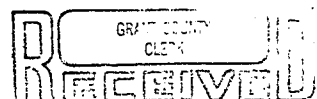
### TIE SKETCH

Show at least three (3) ties and monument



#### LEGEND

- 2" x 24" round, iron pipe
- 1" x 24" round, iron pipe
- \*\*\* Fence



AUG 5 1984

# GRANT COUNTY

## Survey Monument Record

Mt. Ida Twp.

CORNER NO. 99  
 SECTION 26  
 TOWN 6 North  
 RANGE 3 West

TYPE OF MONUMENT 2" x 24" Round, Iron Pipe

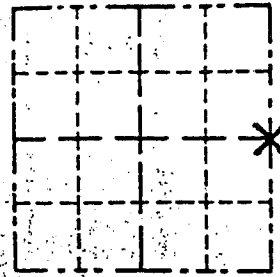
STATE PLANE COORDINATES: N \_\_\_\_\_  
 E \_\_\_\_\_

ELEVATION — M.S.L. DATUM: \_\_\_\_\_

THETA ANGLE: \_\_\_\_\_

FIELD BOOK: \_\_\_\_\_

PAGE \_\_\_\_\_



LOCATION  
 (Indicated by "X")

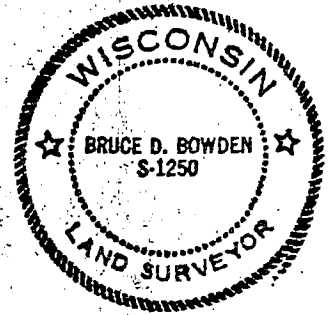
### BASIS FOR MONUMENT LOCATION

(Use reverse side if necessary)

Show info such as: History of corner, with reference to Vol. and pg., dates, surveyor; exact description of monument replaced; if location computed, by taped or EDM traverse; landowner, remarks, etc.

SEAL:

Corner located from existing physical evidence and proportionate measurement, as coordinated from an EDM traverse.



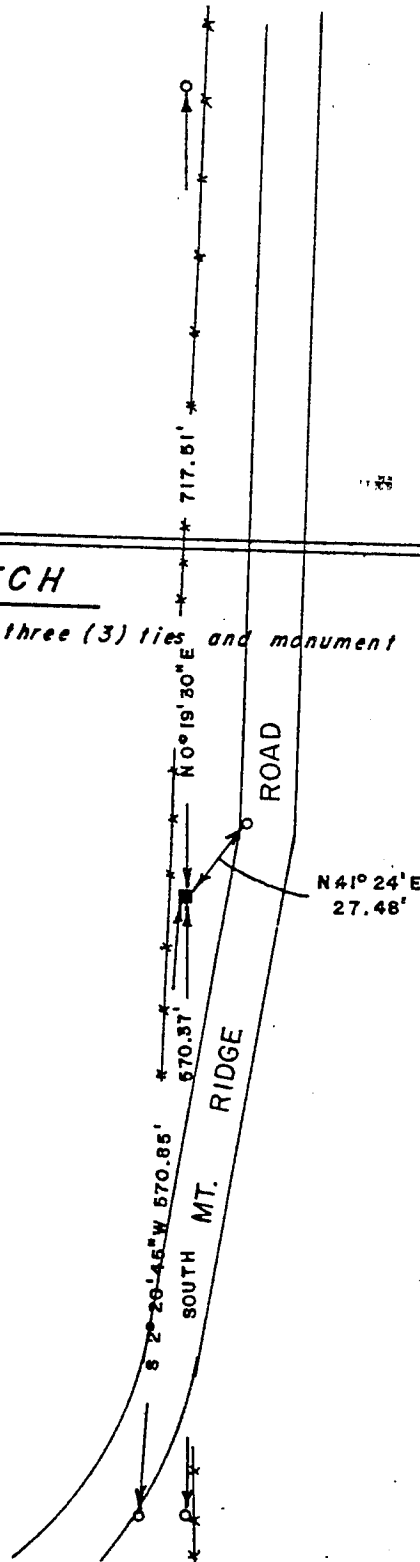
CERTIFIED CORRECT

*Bruce D. Bowden*  
 Registered Land Surveyor

DATE: August 1, 1984

### TIE SKETCH

Show at least three (3) ties and monument



### LEGEND

- $\blacksquare$  2" x 24" round, iron pipe
- $\circ$  1" x 24" round, iron pipe
- $***$  Fence



RECORDED

AUG 5 1984