

**U.S. PUBLIC LAND SURVEY MONUMENT RECORD – GRANT COUNTY, WI**  
**Section 25, Town 6 North Range 3 West, Town of Mount Ida**

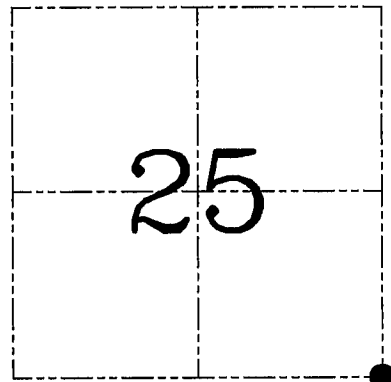
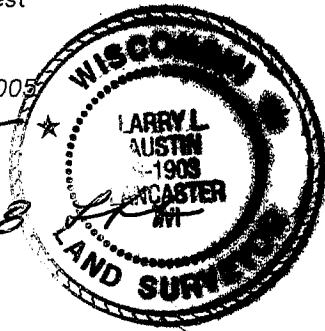
CERTIFICATE

I, Larry L. Austin, do hereby certify that the corner location on this record was determined by me and/or under my direct supervision and that this U.S. public land survey monument record is correct and complete to the best of my knowledge and belief.

Dated this 25th day of August, 2005

*Larry L. Austin*  
 Larry L. Austin S-1903

*Rev 1-15-08*



● = CORNER LOCATION

HISTORY OF CORNER ESTABLISHMENT

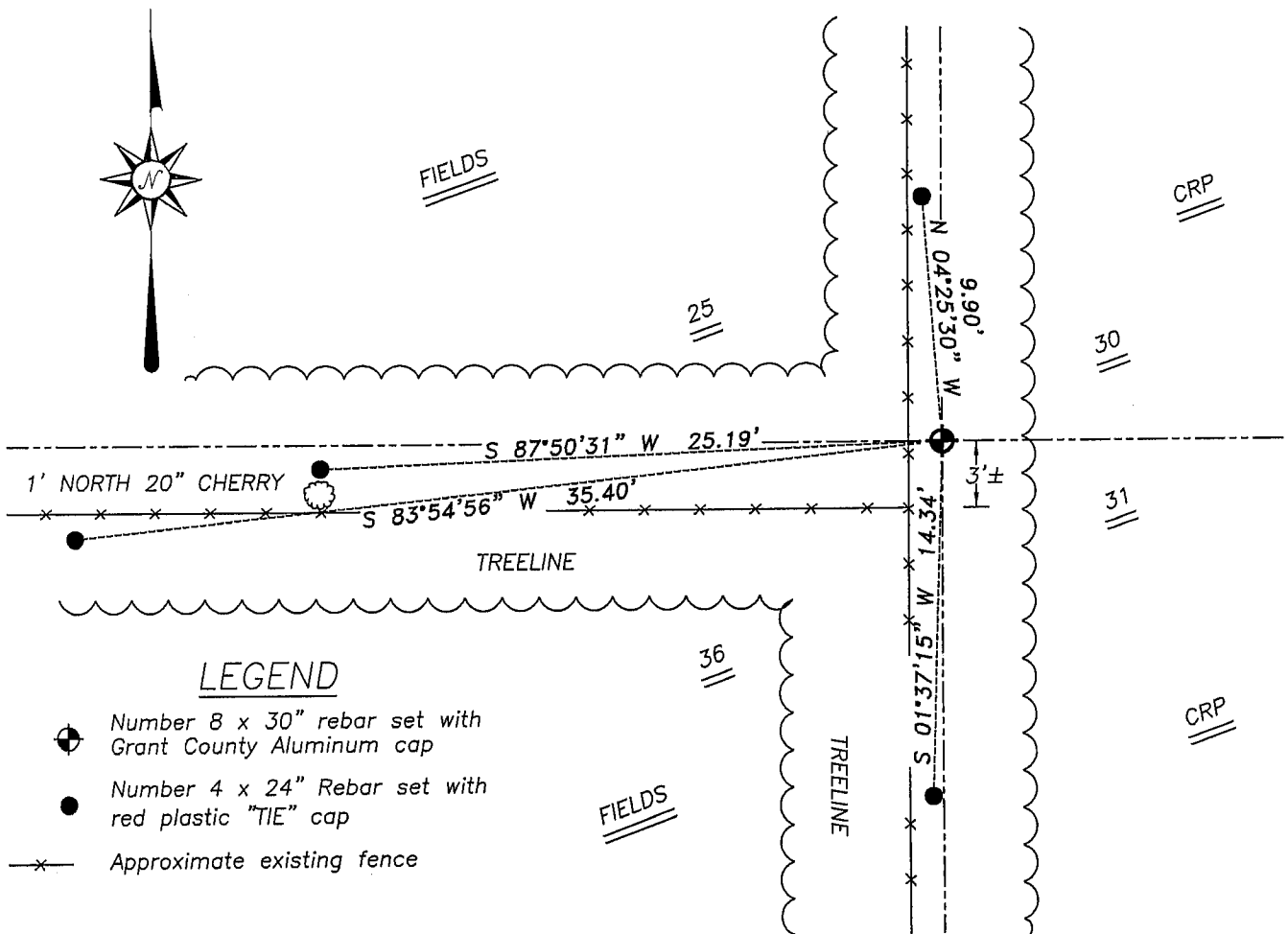
Corner was originally set in 1833 by Sibley.  
 No other record of the corner was found.

DESCRIPTION OF CORNER EVIDENCE FOUND

I set the corner at a nail found at this location.  
 Verified this location using EDM & GPS methods.

DESCRIPTION OF CORNER AND WITNESS MONUMENTS, references and accessories used to perpetuate the original or re-established location of this corner. Witnesses to corner location Bobby Sedgwick & Brad Digman & Shelby Blindert

**SKETCH:**



\* SEE SECTION SUMMARY FOR \*  
 RELATIONSHIP TO AREA CORNERS



**Austin**  
**Engineering LLC**

4211 HWY 81 E, LANCASTER, WI 53813  
 PHONE 608-723-6363 FAX 608-723-6702

JOB NUMBER 05S063  
 FIELDBOOK: TDSR, 2507  
 G:\T6NR2W\29  
 H:\TIE\T6NR3W\101

DRAWN BY: ML DIGMAN  
 APPROVED: LL AUSTIN

SKETCH NOT TO SCALE

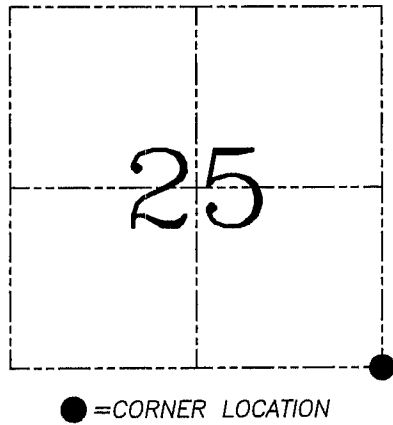
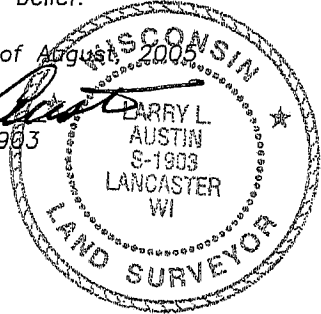
**3. PUBLIC LAND SURVEY MONUMENT RECORD – GRANT COUNTY, WI**  
**Section 25, Town 6 North Range 2 West, Town of Mount Ida**

CERTIFICATE

I, Larry L. Austin, do hereby certify that the corner location on this record was determined by me and/or under my direct supervision and that this U.S. public land survey monument record is correct and complete to the best of my knowledge and belief.

Dated this 25th day of August, 2005

*Larry L. Austin*  
 Larry L. Austin S-1903



HISTORY OF CORNER ESTABLISHMENT

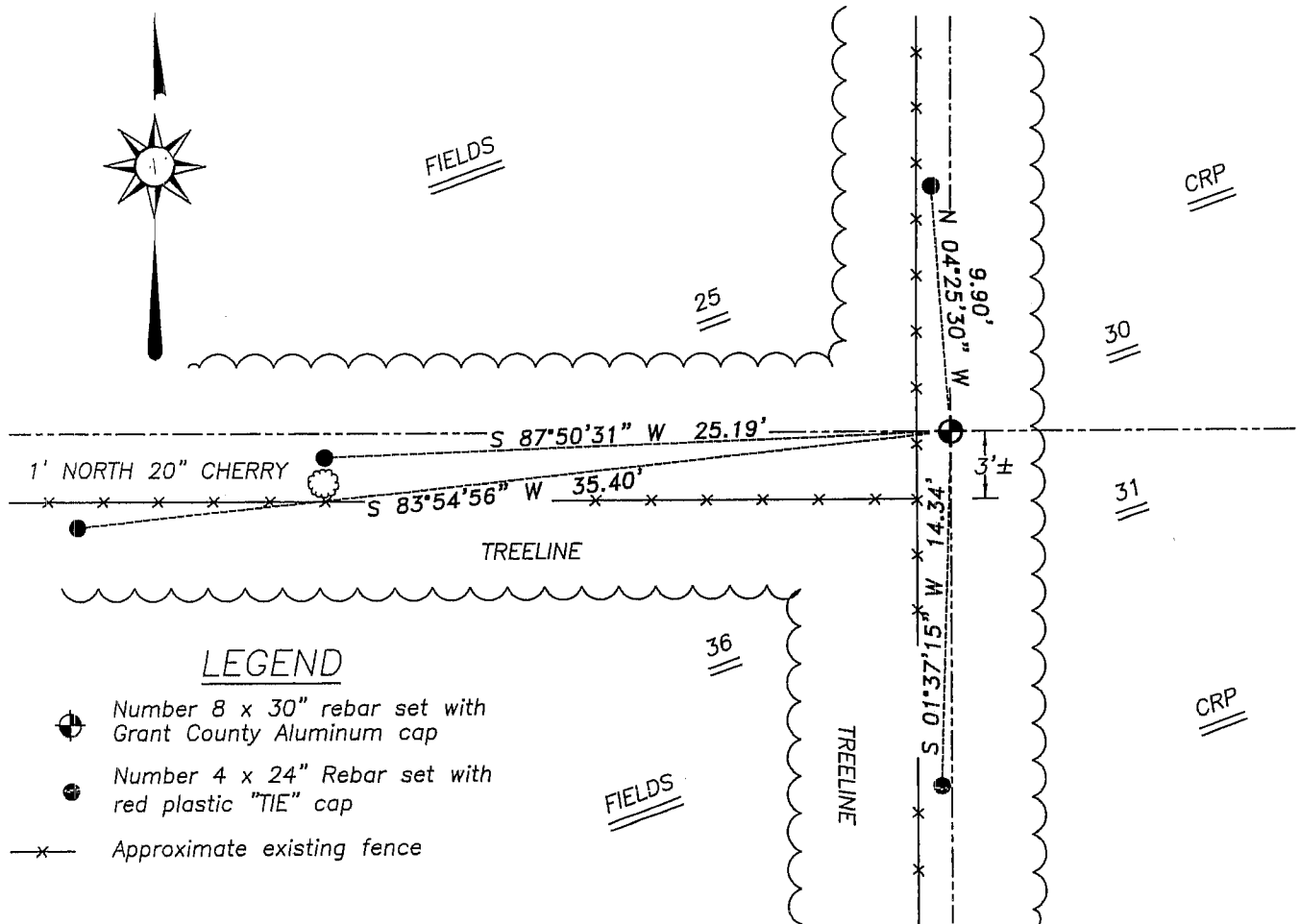
Corner was originally set in 1833 by Sibley.  
 No other record of the corner was found.

DESCRIPTION OF CORNER EVIDENCE FOUND

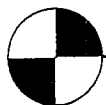
I set the corner at a nail found at this location.  
 Verified this location using EDM & GPS methods.

DESCRIPTION OF CORNER AND WITNESS MONUMENTS, references and accessories used to perpetuate the original or re-established location of this corner. Witnesses to corner location Bobby Sedgwick & Brad Digman & Shelby Blindert

**SKETCH:**



\* SEE SECTION SUMMARY FOR \*  
 RELATIONSHIP TO AREA CORNERS



**Austin Engineering LLC**

4211 HWY 81 E, LANCASTER, WI 53813  
 PHONE 608-723-6363 FAX 608-723-6702

JOB NUMBER 05S063  
 FIELDBOOK: TDSR, 2507  
 G:\T6NR2W\29  
 H:\TIE\T6NR2W\101

DRAWN BY: ML DIGMAN  
 APPROVED: LL AUSTIN

SKETCH NOT TO SCALE