

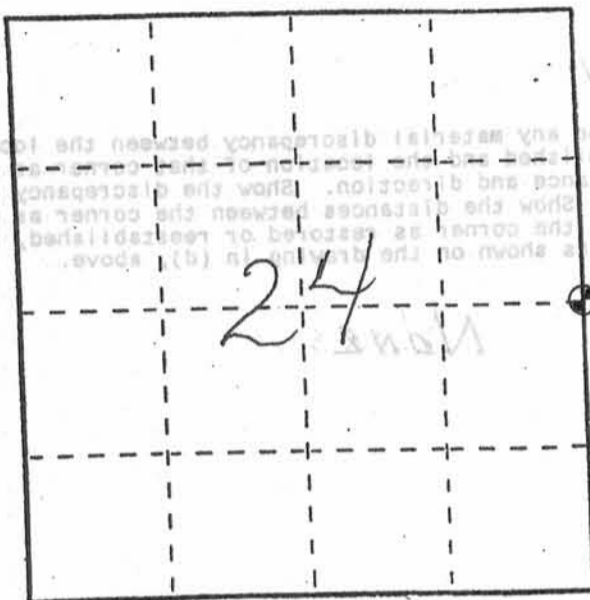
U. S. PUBLIC LAND SURVEY MONUMENT RECORD

INSTRUCTIONS: This record shall show the location of the corner and shall include all of the following nine elements (a through i).

(a) Identify the corner by reference to the U.S. public land survey system.

⊙ = Corner monument restored.

EAST 1/4 CORNER OF
SECTION 24, T6N, R3W,
MOUNT IDA TOWNSHIP,
GRANT COUNTY, WI

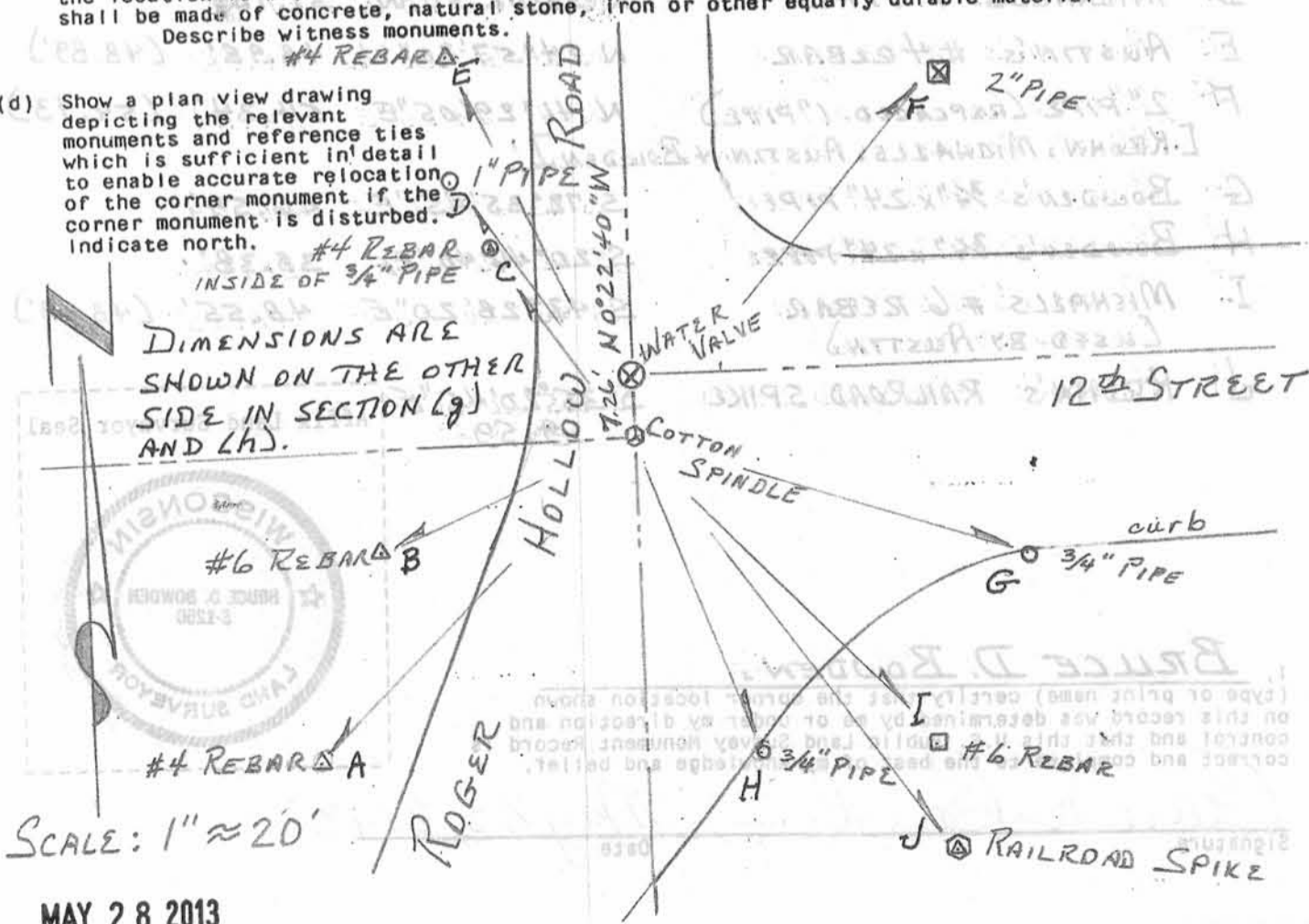


(b) Describe any record evidence, monument evidence, occupational evidence, testimonial evidence or any other material evidence you considered, and whether the monument was found or placed.

CORNER MONUMENTS WERE DESTROYED BY CITY OF FENNIMORE ROAD AND UTILITY CONSTRUCTION. LOCATION WAS RE-ESTABLISHED FROM DIRECT TIES PROVIDED BY DAVID KRONN, (JUNE 1977), ROSS MICHAELS (NOV 1987), LARRY AUSTIN (OCT 2000) AND MY OWN PERSONAL KNOWLEDGE AND GPS COORDINATES FOR THIS CORNER. COTTON SPINDLE IS THE MONUMENT.

(c) In the plan view drawing below, provide reference ties to at least 4 witness monuments, or, if the location is within a municipality, to at least 2 witness monuments. (Witness monuments shall be made of concrete, natural stone, iron or other equally durable material. Describe witness monuments.)

(d) Show a plan view drawing depicting the relevant monuments and reference ties which is sufficient in detail to enable accurate relocation of the corner monument if the corner monument is disturbed. Indicate north.



SCALE: 1" ≈ 20'

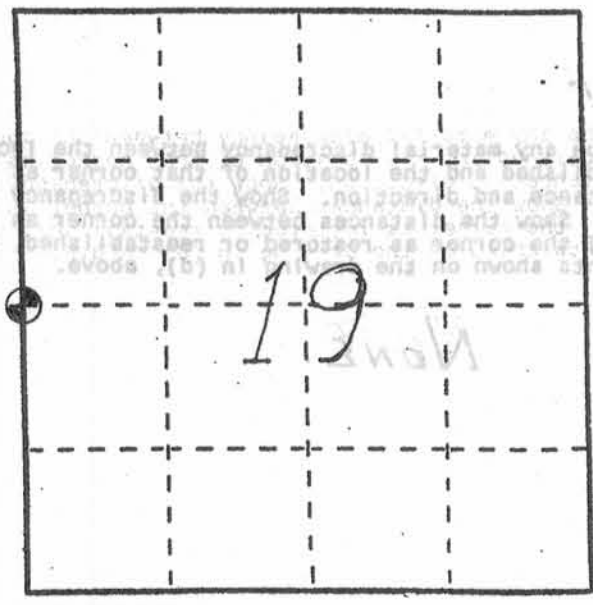
MAY 28 2013

U. S. PUBLIC LAND SURVEY MONUMENT RECORD

INSTRUCTIONS: This record shall show the location of the corner and shall include all of the following nine elements (a through i).

- (a) Identify the corner by reference to the U.S. public land survey system.
- ⑦ = Corner monument restored.

WEST 1/4 CORNER OF
SECTION 19, T6N, R2W,
CITY OF FENNIMORE,
GRANT COUNTY, WI

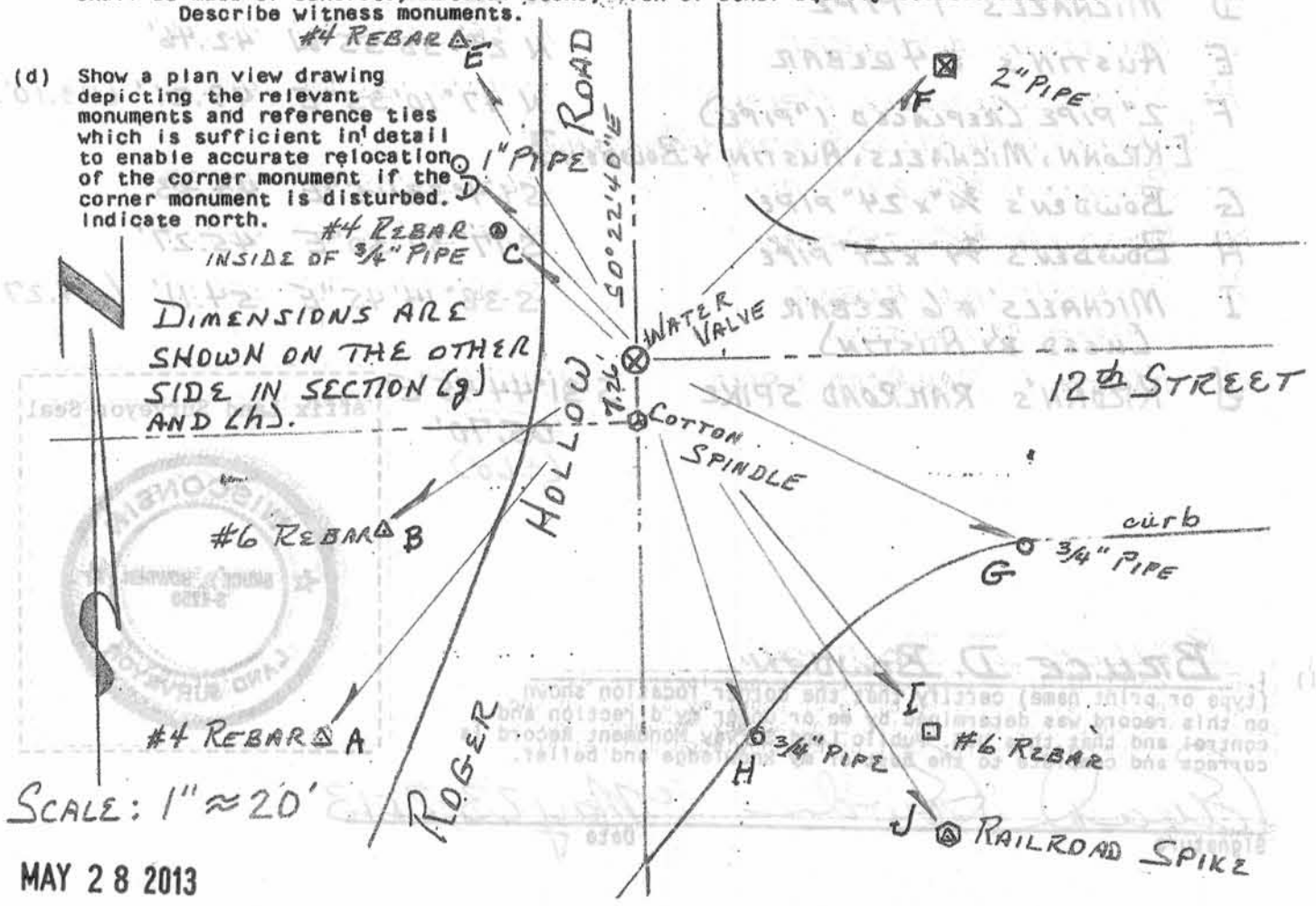


- (b) Describe any record evidence, monument evidence, occupational evidence, testimonial evidence or any other material evidence you considered, and whether the monument was found or placed.

CORNER MONUMENTS WERE DESTROYED BY CITY OF FENNIMORE ROAD AND UTILITY CONSTRUCTION. LOCATION WAS RE-ESTABLISHED FROM DIRECT TIES PROVIDED BY DAVID KRONN, (JUNE 1977), ROSS MICHAELS (NOV 1987), LARRY AUSTIN (OCT 2000) AND MY OWN PERSONAL KNOWLEDGE AND GPS COORDINATES FOR THIS CORNER. WATER VALVE IS THE MONUMENT.

- (c) In the plan view drawing below, provide reference ties to at least 4 witness monuments, or, if the location is within a municipality, to at least 2 witness monuments. (Witness monuments shall be made of concrete, natural stone, iron or other equally durable material. Describe witness monuments.)

- (d) Show a plan view drawing depicting the relevant monuments and reference ties which is sufficient in detail to enable accurate relocation of the corner monument if the corner monument is disturbed. Indicate north.

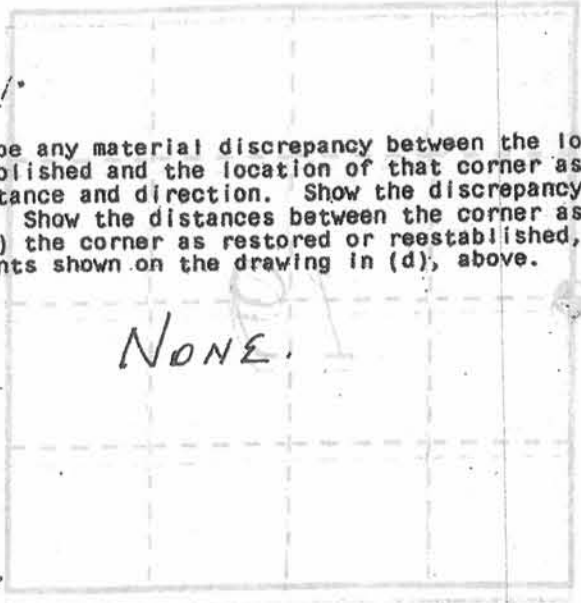


U. S. PUBLIC LAND SURVEY MONUMENT RECORD

This record shall show the location of the corner and shall include all of the following information (a) through (f)

(a) Identify the corner by reference to the U.S. Public Land Survey system.
 (b) Describe any monument restored.

(e) Describe any material discrepancy between the location of the corner as restored or reestablished and the location of that corner as previously restored or reestablished by distance and direction. Show the discrepancy on the plan view drawing under (d), above. Show the distances between the corner as previously restored or reestablished and (1) the corner as restored or reestablished, and (2) to at least 2 of the witness monuments shown on the drawing in (d), above.



(f) Was the corner restored through acceptance of (1) an obliterated evidence location, or, (2) a found perpetuated location?

(2) A FOUND PERPETUATED LOCATION

(g&h) Was the corner reestablished through lost corner proportionate methods? If so, show the method, including the directions and distances to other public land survey corners used as evidence or used for proportioning in determining the corner location?

No (RECORDED AS)

- A AUSTIN'S #4 REBAR S 40° 01' 00" W 56.32'
- B MICHAEL'S #6 REBAR S 55° 34' 55" W 34.50' (34.50')
- C BOWDEN'S REBAR & PIPE N 47° 13' 20" W 21.19'
- D MICHAEL'S 1" PIPE N 42° 28' 20" W 31.68' (31.37')
- E AUSTIN'S #4 REBAR N 28° 58' 55" W 42.46'
- F 2" PIPE (REPLACED 1" PIPE) N 47° 10' 35" E 49.21' (49.10')
- [KRONN, MICHAELS, AUSTIN + BOWDEN]
- G BOWDEN'S 3/4" x 24" PIPE S 64° 33' 15" E 49.33'
- H BOWDEN'S 3/4" x 24" PIPE S 17° 37' 30" E 45.27'
- I MICHAEL'S #6 REBAR (USED BY AUSTIN) S 38° 14' 45" E 54.11' (54.27')
- J KRONN'S RAILROAD SPIKE S 31° 44' 45" E 65.70' (±60')

Affix Land Surveyor Seal



(i) I, BRUCE D. BOWDEN, (type or print name) certify that the corner location shown on this record was determined by me or under my direction and control and that this U.S. Public Land Survey Monument Record is correct and complete to the best of my knowledge and belief.

Bruce D. Bowden
Signature

May 23, 2013
Date

DEC 11 2000

GRANT COUNTY CERTIFIED LAND CORNER

CORNER NUMBER 74

CERTIFICATE:

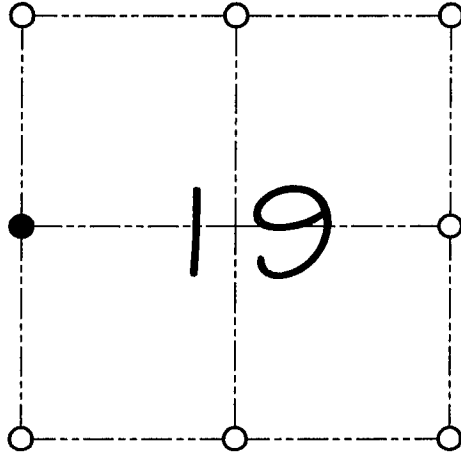
I, Larry L. Austin, do hereby certify that on the 19th day of October, 1998, I found evidence of the West 1/4 corner of Section 19, Town 6 North, Range 2 West, of the 4th Principal Meridian, and I re-established said corner according to the Wisconsin statutes as shown and described hereon.

Dated this 23rd day of October, 2000

Larry L. Austin
Larry L. Austin S-1903



SEAL



● = CORNER LOCATION
WEST 1/4 CORNER OF SECTION 19, T 6 N R 2 W TOWN OF FENNIMORE

HISTORY OF ORIGINAL CORNER ESTABLISHMENT:

Corner was never originally set. In 1977 David Krohn set an Aluminum monument. In 1987 Bruce Bowden found the existing Aluminum monument.

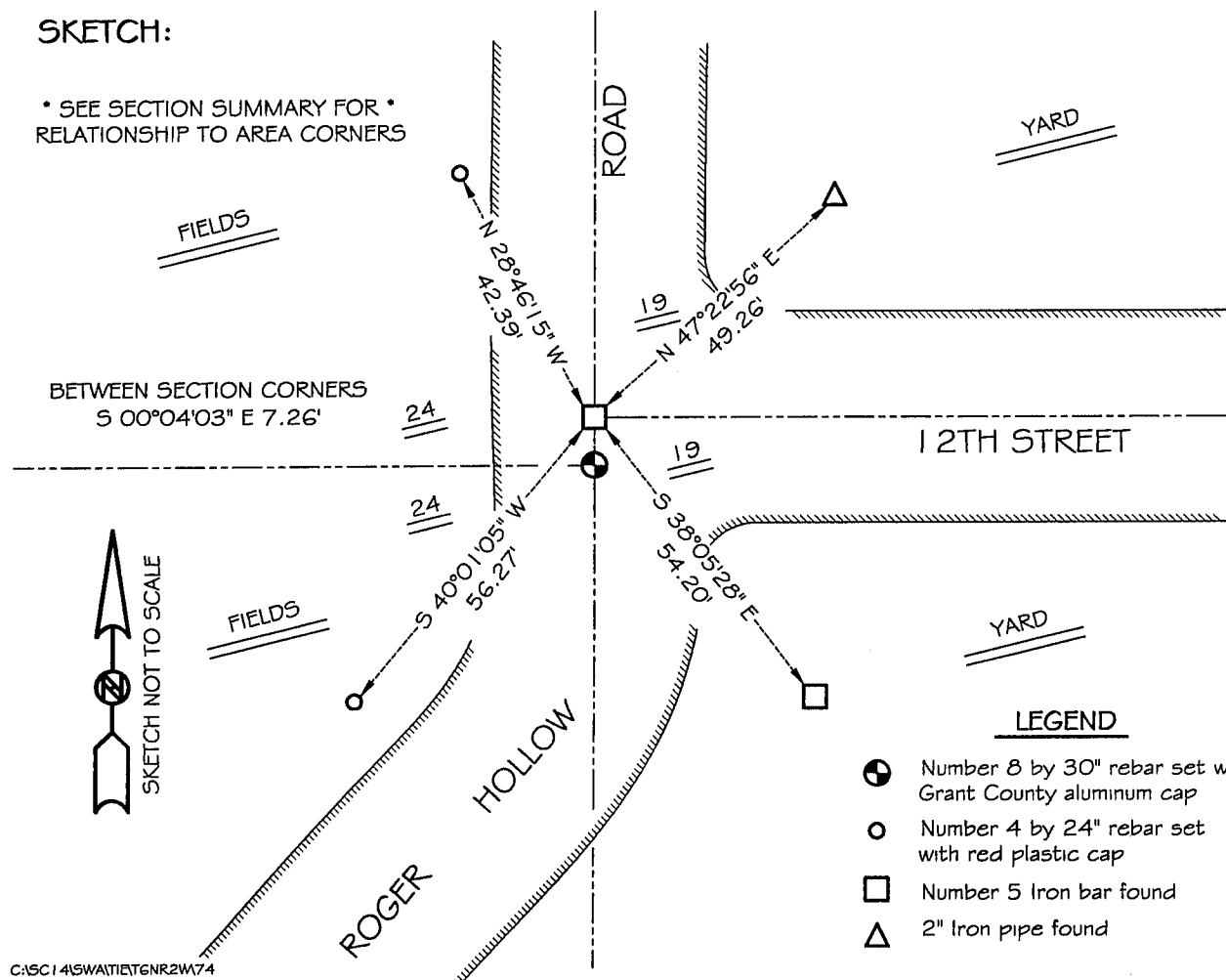
DESCRIPTION OF CORNER EVIDENCE FOUND:

I found a 5/8" iron bar at this location. I accepted it's location after an E.D.M. & G.P.S. traverse of the area.

DESCRIPTION OF CORNER AND WITNESS MONUMENTS, references and accessories used to perpetuate the original or re-established location of this corner
WITNESS TO THE CORNER LOCATION: SHELBY BLINDERT & BOBBY SEDGWICK

SKETCH:

* SEE SECTION SUMMARY FOR *
RELATIONSHIP TO AREA CORNERS



LEGEND

- Number 8 by 30" rebar set with Grant County aluminum cap
- Number 4 by 24" rebar set with red plastic cap
- Number 5 Iron bar found
- △ 2" Iron pipe found

C:\SC14\SWAIT\TET6NR2W74

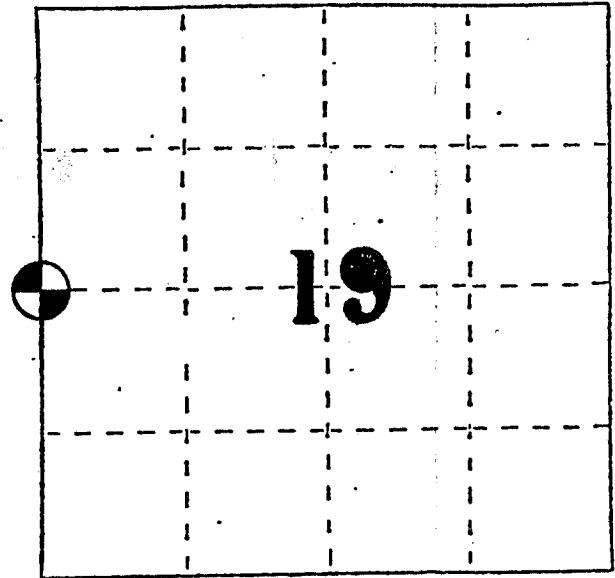
U. S. PUBLIC LAND SURVEY MONUMENT RECORD

INSTRUCTIONS : This record shall show the location of the corner and shall include all of the following nine elements (a through i).

- (a) Identify the corner by reference to the U.S. public land survey system.
 ● = Corner monument restored.

West 1/4 corner of Section 19, T6N, R2W,
 Grant County, Wisconsin

Date of survey: October 13, 1987

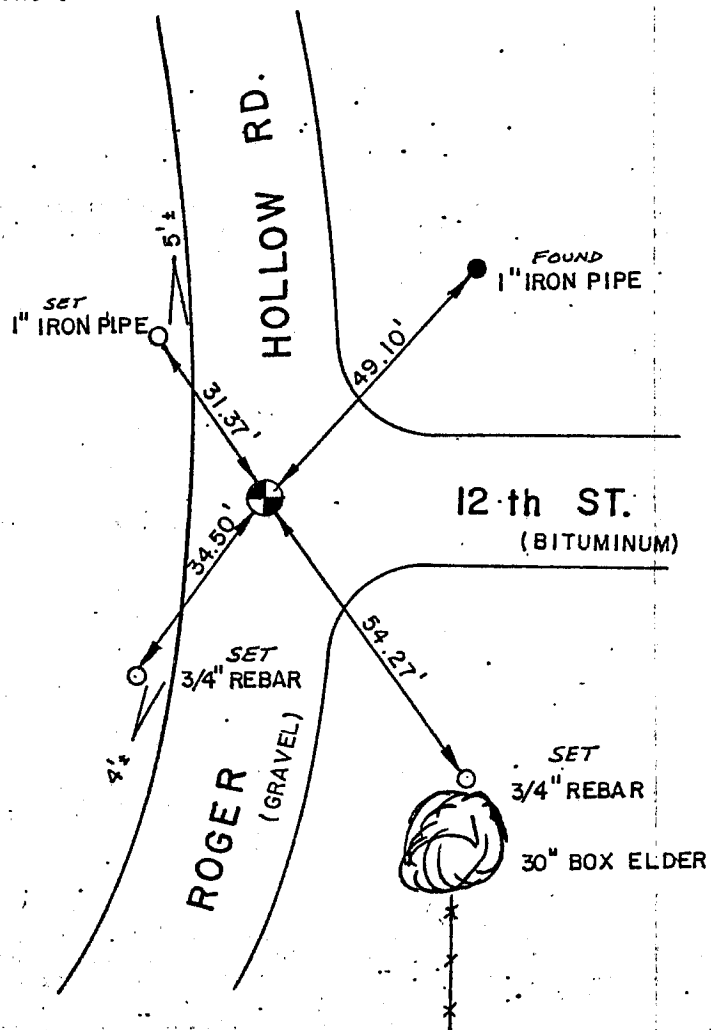
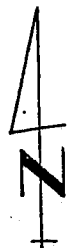


- (b) Describe any record evidence, monument evidence, occupational evidence, testimonial evidence or any other material evidence you considered, and whether the monument was found or placed.

I found the aluminum monument at the West 1/4 corner of Section 19 and one of the tie points as set by David K. Krohn on June 10, 1977. I established additional ties as shown below.

- (c) In the plan view drawing below, provide reference ties to at least 4 witness monuments, or, if the location is within a municipality, to at least 2 witness monuments. (Witness monuments shall be made of concrete, natural stone, iron or other equally durable material.)
 Describe witness monuments.

- (d) Show a plan view drawing depicting the relevant monuments and reference ties which is sufficient in detail to enable accurate relocation of the corner monument if the corner monument is disturbed. Indicate north.



NOV 18 1987

(c) Describe any material discrepancy between the location of the corner as restored or reestablished and the location that corner as previously restored or reestablished above. Show the discrepancy on the plan view drawing under (d), and (1) the corner as restored or reestablished, and (2) to at least 2 of the witness monuments shown on the drawing in (d), above.

No known discrepancy.

(f) Was the corner restored through acceptance of (1) an obliterated evidence location, or, (2) a found perpetuated location?

A found perpetuated location.

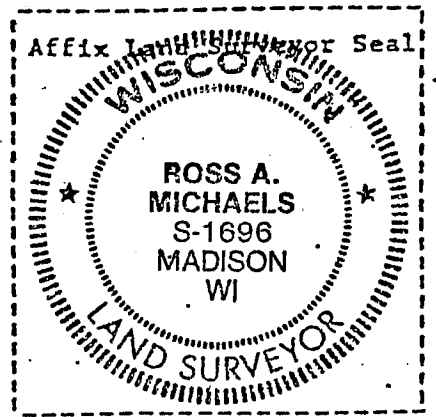
(g&h) Was the corner reestablished through lost corner proportionate methods? If so, show the method, including the directions and distances to other public land survey corners used as evidence or used for proportioning in determining the corner location?

Not a lost corner.

(1) I, Ross A. Michaels
(type or print name) certify that the corner location shown on this record was determined by me or under my direction and control and that this U.S. Public Land Survey Monument Record is correct and complete to the best of my knowledge and belief.

Ross A. Michaels
Signature

Nov. 17, 1987
Date



U. S. PUBLIC LAND SURVEY MONUMENT RECORD

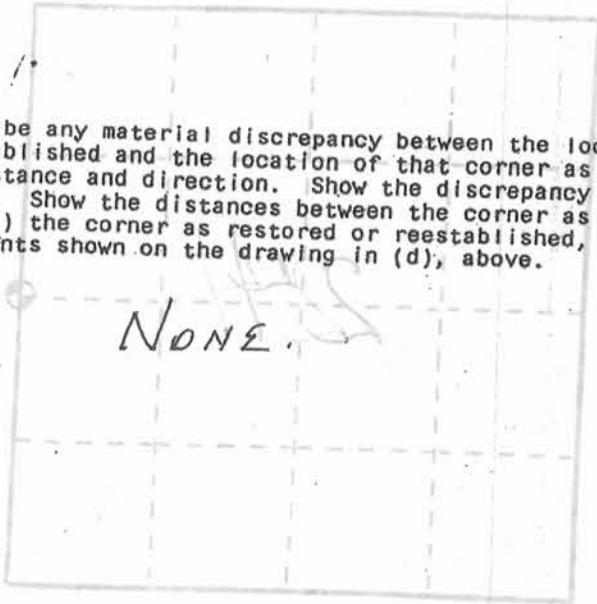
This record shall show the location of the corner and shall include all of the following nine elements (a through i).

INSTRUCTIONS:

(a) Identify the corner by reference to the U.S. Public Land Survey System.

(b) Corner monument restored.

(e) Describe any material discrepancy between the location of the corner as restored or reestablished and the location of that corner as previously restored or reestablished by distance and direction. Show the discrepancy on the plan view drawing under (d), above. Show the distances between the corner as previously restored or reestablished, and (1) the corner as restored or reestablished, and (2) to at least 2 of the witness monuments shown on the drawing in (d), above.



(f) Was the corner restored through acceptance of (1) an obliterated evidence location, or, (2) a found perpetuated location?

(2) A FOUND PERPETUATED LOCATION

(g&h) Was the corner reestablished through lost corner proportionate methods? If so, show the method, including the directions and distances to other public land survey corners used as evidence or used for proportioning in determining the corner location?

No

(RECORDED AS)

A	AUSTIN'S #4 REBAR	S 45° 20' 50" W	51.04'	(50.93')
B	MICHAELS' #6 REBAR	S 66° 48' 05" W	31.06'	
C	BOWDEN'S REBAR & PIPE	N 35° 51' 00" W	26.71'	
D	MICHAELS' 1" PIPE	N 35° 02' 50" W	37.42'	
E	AUSTIN'S #4 REBAR	N 24° 57' 30" W	48.98'	(48.89')
F	2" PIPE (REPLACED 1" PIPE) [KRONN, MICHAELS, AUSTIN & BOWDEN]	N 41° 29' 05" E	54.34'	(54.43')
G	BOWDEN'S 3/4" x 24" PIPE	S 72° 35' 45" E	46.59'	
H	BOWDEN'S 3/4" x 24" PIPE	S 20° 46' 40" E	38.38'	
I	MICHAELS' #6 REBAR (USED BY AUSTIN)	S 43° 28' 20" E	48.55'	(48.69')
J	KRONN'S RAILROAD SPIKE	S 35° 20' 45" E	59.59'	

Affix Land Surveyor Seal



(i) BRUCE D. BOWDEN,
(type or print name) certify that the corner location shown on this record was determined by me or under my direction and control and that this U.S. Public Land Survey Monument Record is correct and complete to the best of my knowledge and belief.

Signature

Date

MAY 23 2013

DEC 11 2000

GRANT COUNTY CERTIFIED LAND CORNER

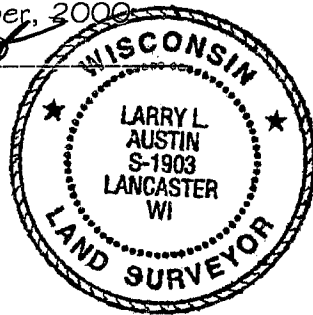
CORNER NUMBER 80

CERTIFICATE:

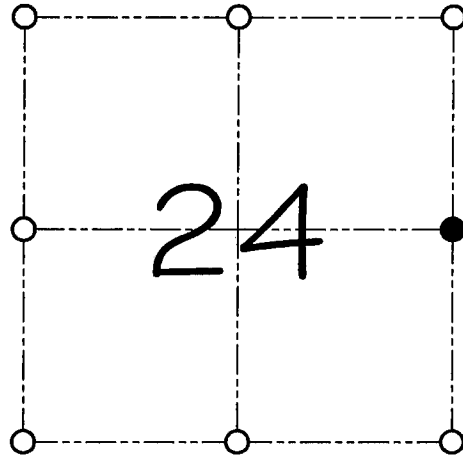
I, Larry L. Austin, do hereby certify that on the 19th day of October, 1998, I found evidence of the East 1/4 corner of Section 24, Town 6 North, Range 3 West, of the 4th Principal Meridian, and I re-established said corner according to the Wisconsin statutes as shown and described hereon.

Dated this 23rd day of October, 2000

Larry L. Austin
Larry L. Austin S-1903



SEAL



● = CORNER LOCATION

EAST 1/4 CORNER OF
SECTION 24, T 6 N R 3 W
TOWN OF MOUNT IDA

HISTORY OF ORIGINAL CORNER ESTABLISHMENT:

Corner was originally set in 1832 by Sibley.
No other record of the corner was found.

DESCRIPTION OF CORNER EVIDENCE FOUND:

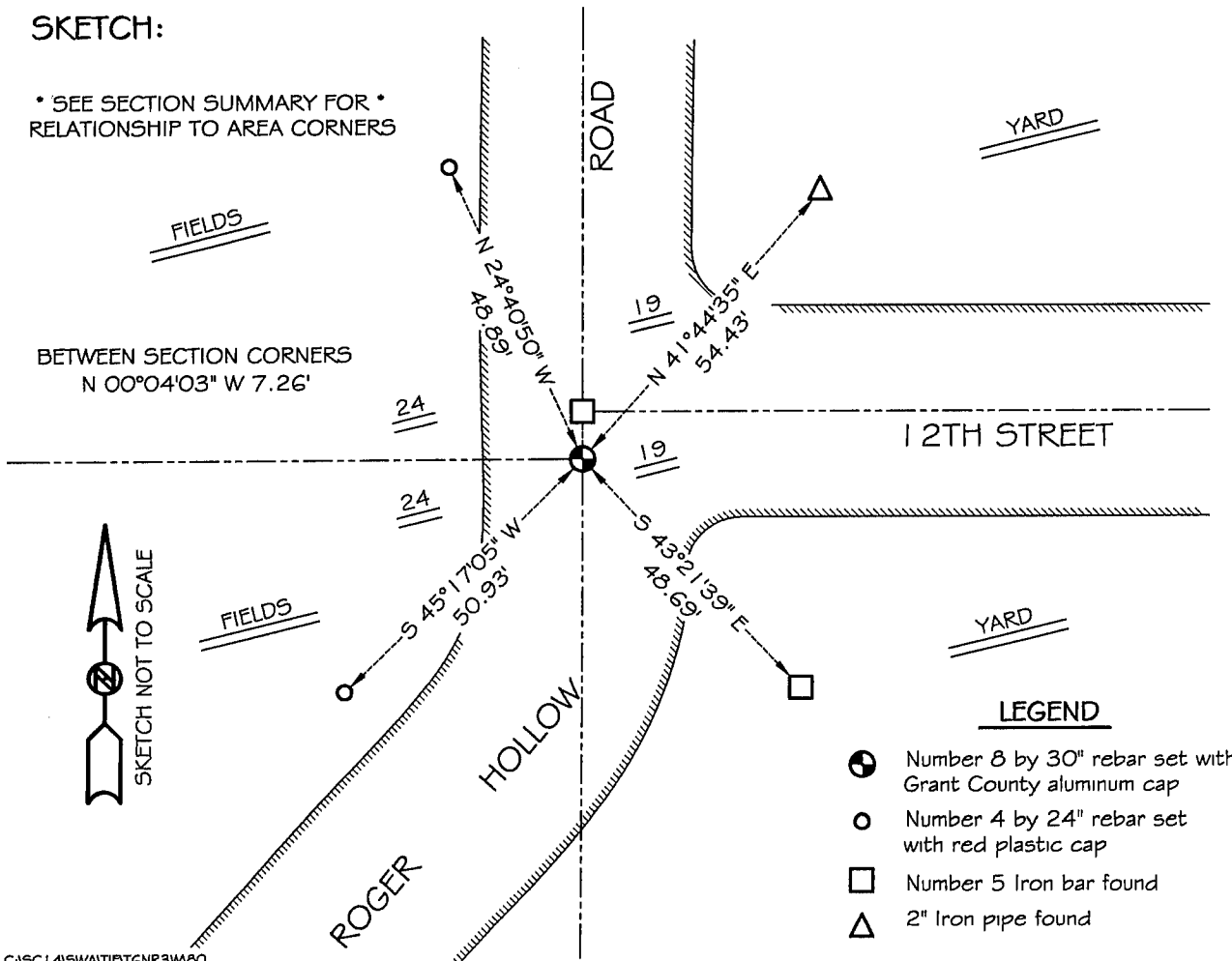
I reset the corner based on the proportion offset from the East 1/4 of Section 19. Verified this location using E.D.M & G.P.S. methods.

DESCRIPTION OF CORNER AND WITNESS MONUMENTS, references and accessories used to perpetuate the original or re-established location of this corner

WITNESS TO THE CORNER LOCATION: SHELBY BLINDERT & BOBBY SEDGWICK

SKETCH:

* SEE SECTION SUMMARY FOR *
RELATIONSHIP TO AREA CORNERS



LEGEND

- Number 8 by 30" rebar set with Grant County aluminum cap
- Number 4 by 24" rebar set with red plastic cap
- Number 5 Iron bar found
- △ 2" Iron pipe found

C:\S\14\SWAIT\T6NR3W\B0