

# GRANT COUNTY CERTIFIED LAND CORNER

CORNER NUMBER 93

**CERTIFICATE:**

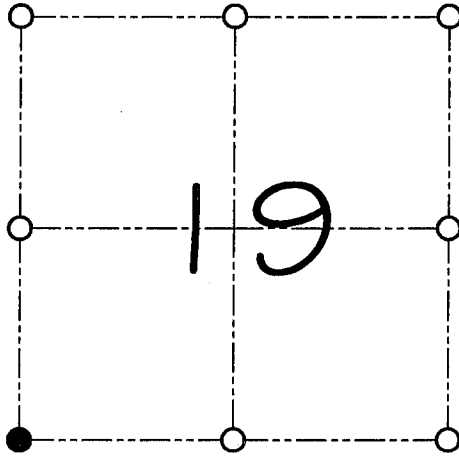
I, Larry L. Austin, do hereby certify that on the 23rd day of December, 1998, I found evidence of the Southwest corner of Section 19, Town 6 North, Range 2 West, of the 4th Principal Meridian, and I re-established said corner according to the Wisconsin statutes as shown and described hereon.

Dated this 23rd day of October, 2000.

*Larry L. Austin*  
Larry L. Austin S-1903



SEAL



● = CORNER LOCATION  
SOUTHWEST CORNER OF SECTION 19, T 6 N R 2 W TOWN OF FENNIMORE

**HISTORY OF ORIGINAL CORNER ESTABLISHMENT:**

Corner was originally set in 1833 by Parke.  
David Krohn set the corner in conjunction with DOT work.

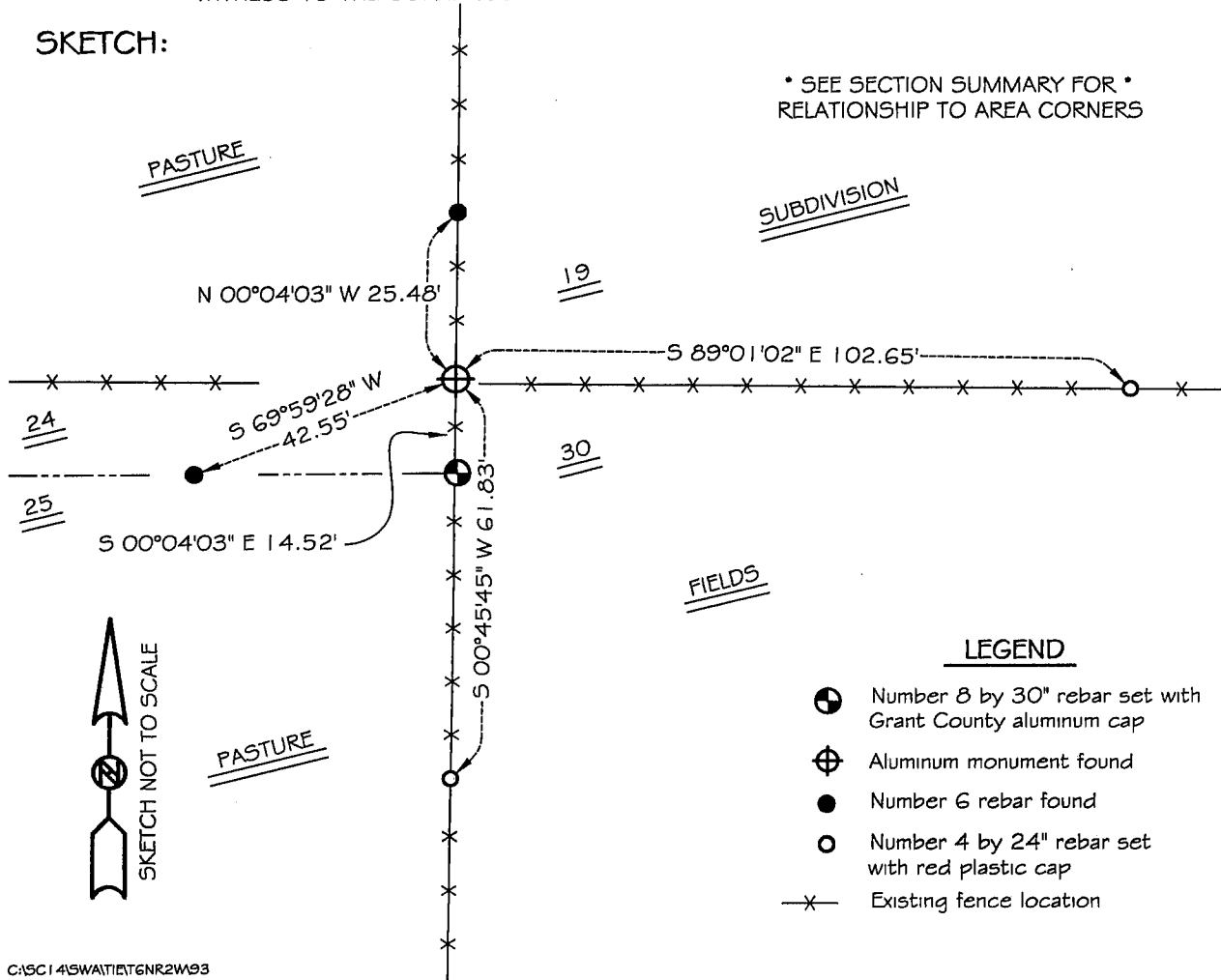
**DESCRIPTION OF CORNER EVIDENCE FOUND:**

I found the existing Aluminum monument and accepted its location after an E.D.M. & G.P.S. traverse of the area.

**DESCRIPTION OF CORNER AND WITNESS MONUMENTS, references and accessories used to perpetuate the original or re-established location of this corner**

WITNESS TO THE CORNER LOCATION: SHELBY BLINDERT & BOBBY SEDGWICK

**SKETCH:**



\* SEE SECTION SUMMARY FOR \*  
RELATIONSHIP TO AREA CORNERS

**LEGEND**

- Number 8 by 30" rebar set with Grant County aluminum cap
- ⊕ Aluminum monument found
- Number 6 rebar found
- Number 4 by 24" rebar set with red plastic cap
- x— Existing fence location

C:\SC14\SWAIT\T6NR2W93