

APR 16 1991

GRANT COUNTY GOVERNMENT CORNER RECORD

CENTER CORNER, SECTION 22, TOWNSHIP 6 NORTH, RANGE 3 W
TOWN, ~~OF MOUNT IDA~~ OF MOUNT IDA

TYPE OF MONUMENT: 3/4" X 24" IRON ROD ELEVATION-M.S.L. DATUM _____

STATE PLANE COORDINATES: N _____

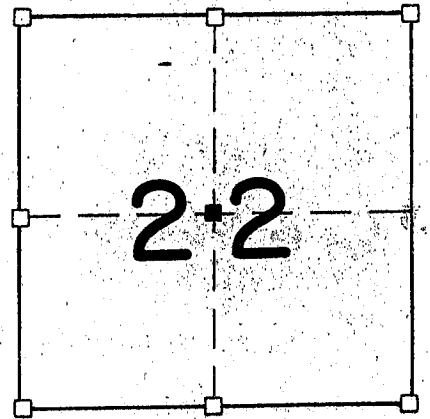
WISCONSIN SOUTH ZONE E _____

WITNESSES TO CORNER LOCATION

SEAN M. WALSH

PATRICK J. DEDERICH

SECTION 22, T 6 N, R 3 W
TOWN OF MOUNT IDA

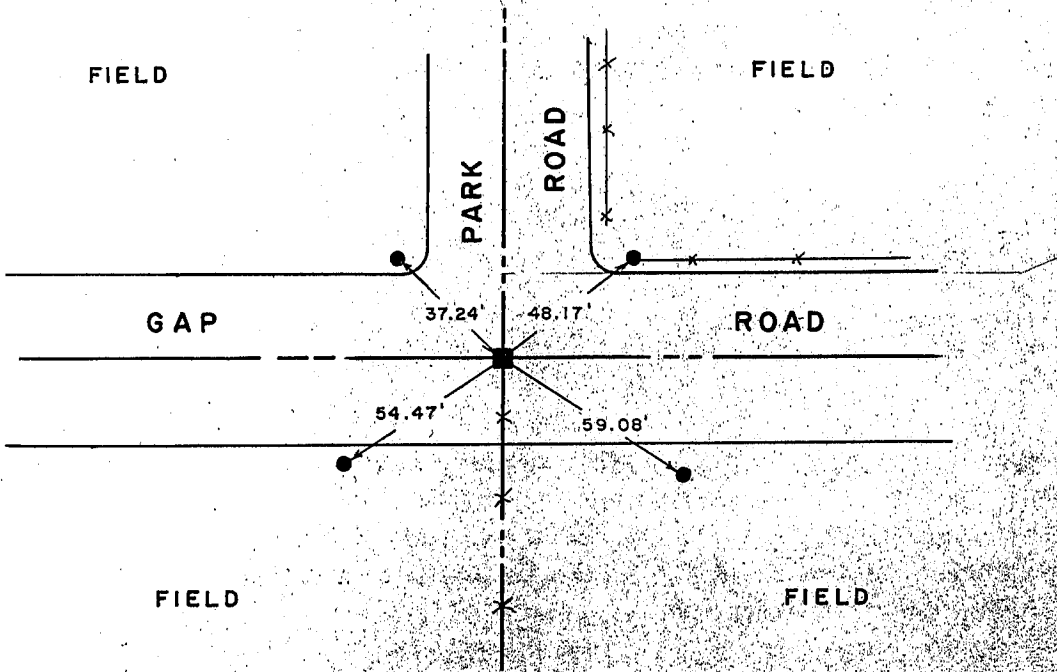


■ - CORNER LOCATION

● - 3/4" X 24" IRON ROD SET



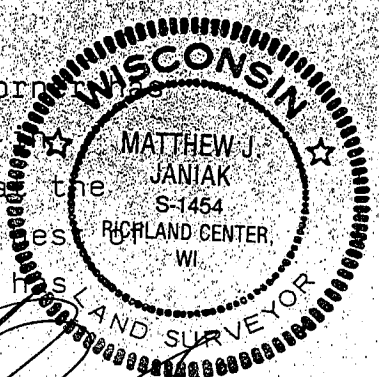
TIE SKETCH
(SHOW ALL HELPFUL FEATURES)



SURVEYOR'S CERTIFICATE
STATE OF WISCONSIN)
COUNTY) SS

SEAL S-1454

I, Matthew J. Janiak, DO HEREBY CERTIFY THAT the above corner has
been established under my direction and supervision in
accordance with the information shown hereon and that the information
information shown hereon is correct and true to the best of my
my information, knowledge and belief. This location has
been established at the occupied location which is



DATED THIS 28th DAY OF March, 19 90

Matthew J. Janiak
REGISTERED LAND SURVEYOR

CORNER CODE

27/5

(OVER)

fits very well with the location of the other corners of the Northwest One-quarter of Section 22.