

U.S. PUBLIC LAND SURVEY MONUMENT RECORD

Section 27, Town 6 North Range 3 West, Town of Mount Ida, Grant County, Wisconsin

CERTIFICATE

I, Larry L. Austin, do hereby certify that the corner location on this record was determined by me and/or under my direct supervision and that this U.S. public land survey monument record is correct and complete to the best of my knowledge and belief.



● = CORNER LOCATION

Larry L. Austin
Larry L. Austin, S-1903



HISTORY OF CORNER

Corner was originally set in 1832 by Harvey Parke. In 1854 John Clark found the original post. No other record of the corner was found.

CORNER EVIDENCE FOUND

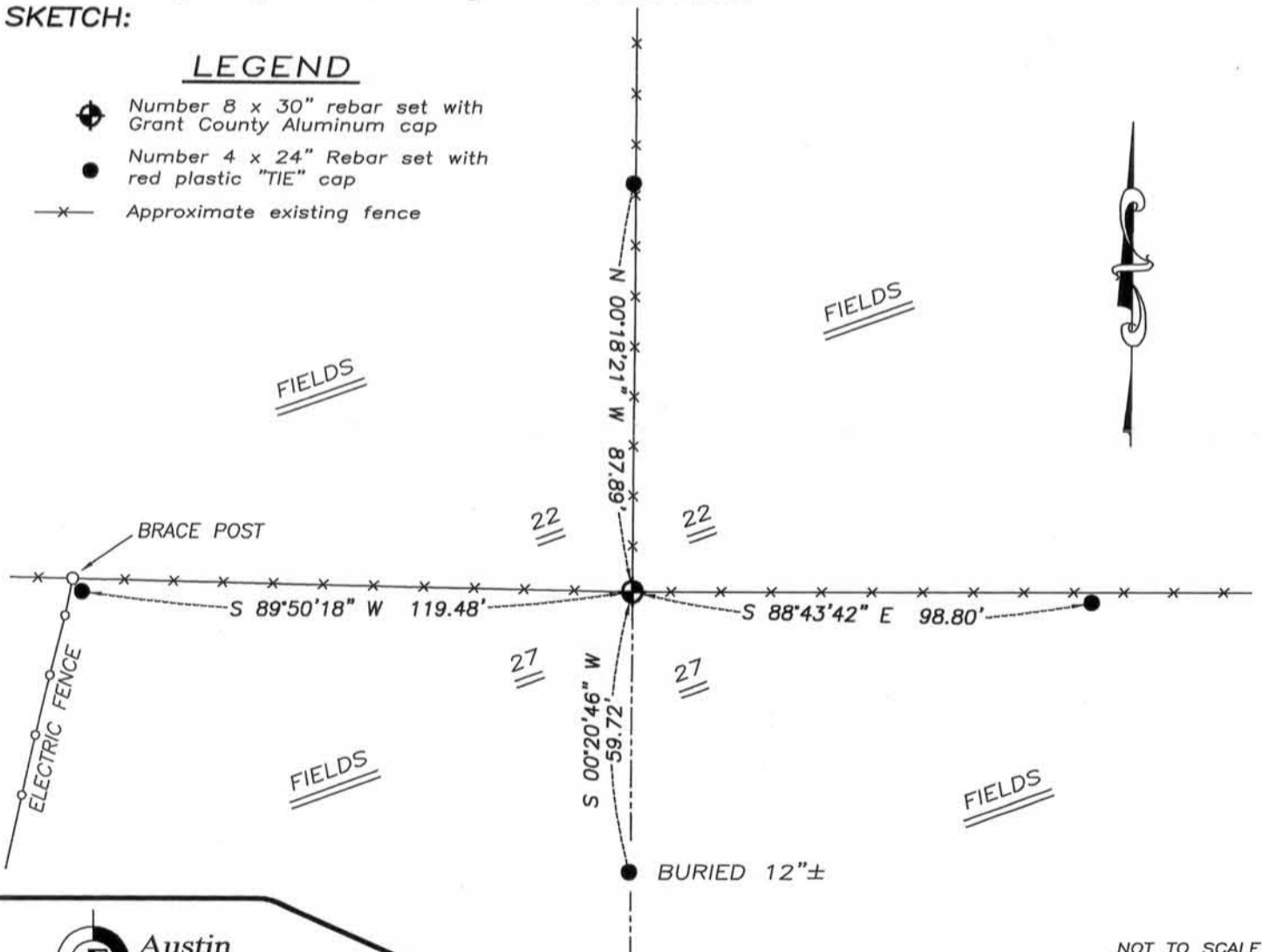
I found an existing fence corner and accepted it's location after an EDM & GPS traverse of the area. Verified this location to all occupied and monumented corners along the North line of Section 27.

DESCRIPTION OF CORNER AND WITNESS MONUMENTS, references and accessories used to perpetuate the original or reestablished location of this corner. Witnesses to monument location Bobby Sedgwick & Brad Digman & Shane Austin

SKETCH:

LEGEND

- Number 8 x 30" rebar set with Grant County Aluminum cap
- Number 4 x 24" Rebar set with red plastic "TIE" cap
- x— Approximate existing fence



NOT TO SCALE

Austin Engineering LLC
austinengineeringllc.com
4211 HWY 81 E, LANCASTER, WI 53813
PHONE: 608-723-6363 FAX: 608-723-6702

JOB NUMBER 10S074-BELSTRA
FIELDBOOK: TDSR, 10-00 DRAWN BY: SW AUSTIN
G:\T6NR3W\33A APPROVED: LL AUSTIN
H:\TIE\T6NR3W\86