

Mt. Ida Twp.

# GRANT COUNTY

## Survey Monument Record

CORNER NO. 85  
 SECTION 26  
 TOWN 6 North  
 RANGE 3 West

TYPE OF MONUMENT 1" solid, iron, axle shaft

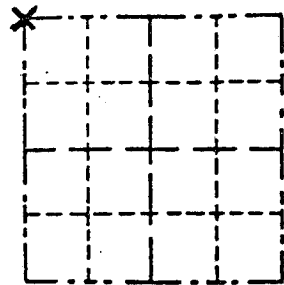
STATE PLANE COORDINATES: N \_\_\_\_\_  
E \_\_\_\_\_

ELEVATION — M.S.L. DATUM: \_\_\_\_\_

THETA ANGLE: \_\_\_\_\_

FIELD BOOK: \_\_\_\_\_

PAGE \_\_\_\_\_



LOCATION  
(Indicated by "X")

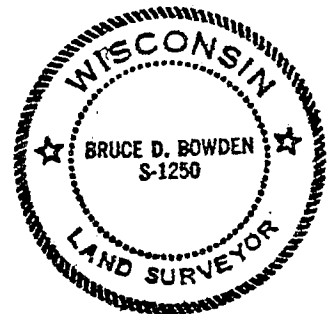
### BASIS FOR MONUMENT LOCATION

(Use reverse side if necessary)

Show info such as: History of corner, with reference to Vol. and pg., dates, surveyor; exact description of monument replaced; if location computed, by taped or EDM traverse; landowner, remarks, etc.

SEAL:

Axle shaft found in place and accepted as corner after verification from evidence of an EDM traverse.



CERTIFIED CORRECT  
*Bruce D. Bowden*

Registered Land Surveyor

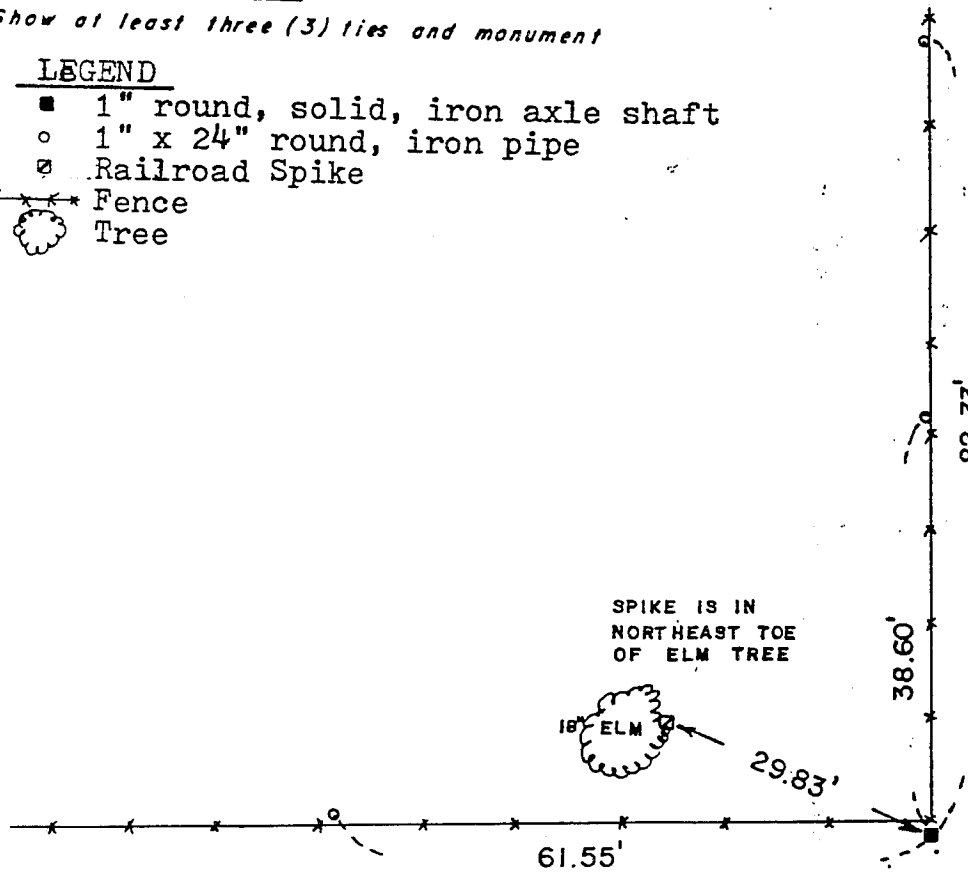
DATE: August 1, 1984

### TIE SKETCH

Show at least three (3) ties and monument

#### LEGEND

- 1" round, solid, iron axle shaft
- 1" x 24" round, iron pipe
- ⊗ Railroad Spike
- +—+—+— Fence
- ☼ Tree



SPIKE IS IN  
NORTHEAST TOE  
OF ELM TREE

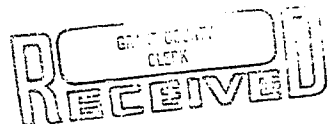
18' ELM

29.83'

38.60'

82.33'

61.55'



AUG 5 1984

# GRANT COUNTY

## Survey Monument Record

Ma. Ida Twp.

CORNER NO. 85  
 SECTION 26  
 TOWN 6 North  
 RANGE 3 West

TYPE OF MONUMENT 1" solid, iron, axle shaft

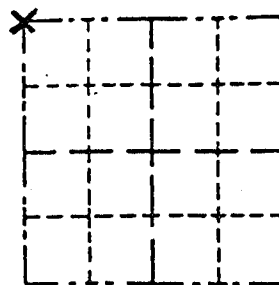
STATE PLANE COORDINATES: N \_\_\_\_\_  
E \_\_\_\_\_

ELEVATION — M.S.L. DATUM: \_\_\_\_\_

THETA ANGLE: \_\_\_\_\_

FIELD BOOK: \_\_\_\_\_

PAGE \_\_\_\_\_



LOCATION  
(Indicated by "X")

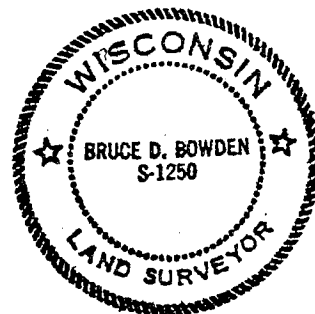
### BASIS FOR MONUMENT LOCATION

(Use reverse side if necessary)

Show info such as: History of corner, with reference to Vol. and pg., dates, surveyor; exact description of monument replaced; if location computed, by taped or EDM traverse; landowner, remarks, etc.

SEAL:

Axle shaft found in place and accepted as corner after verification from evidence of an EDM traverse.



CERTIFIED CORRECT  
*Bruce D. Bowden*

Registered Land Surveyor

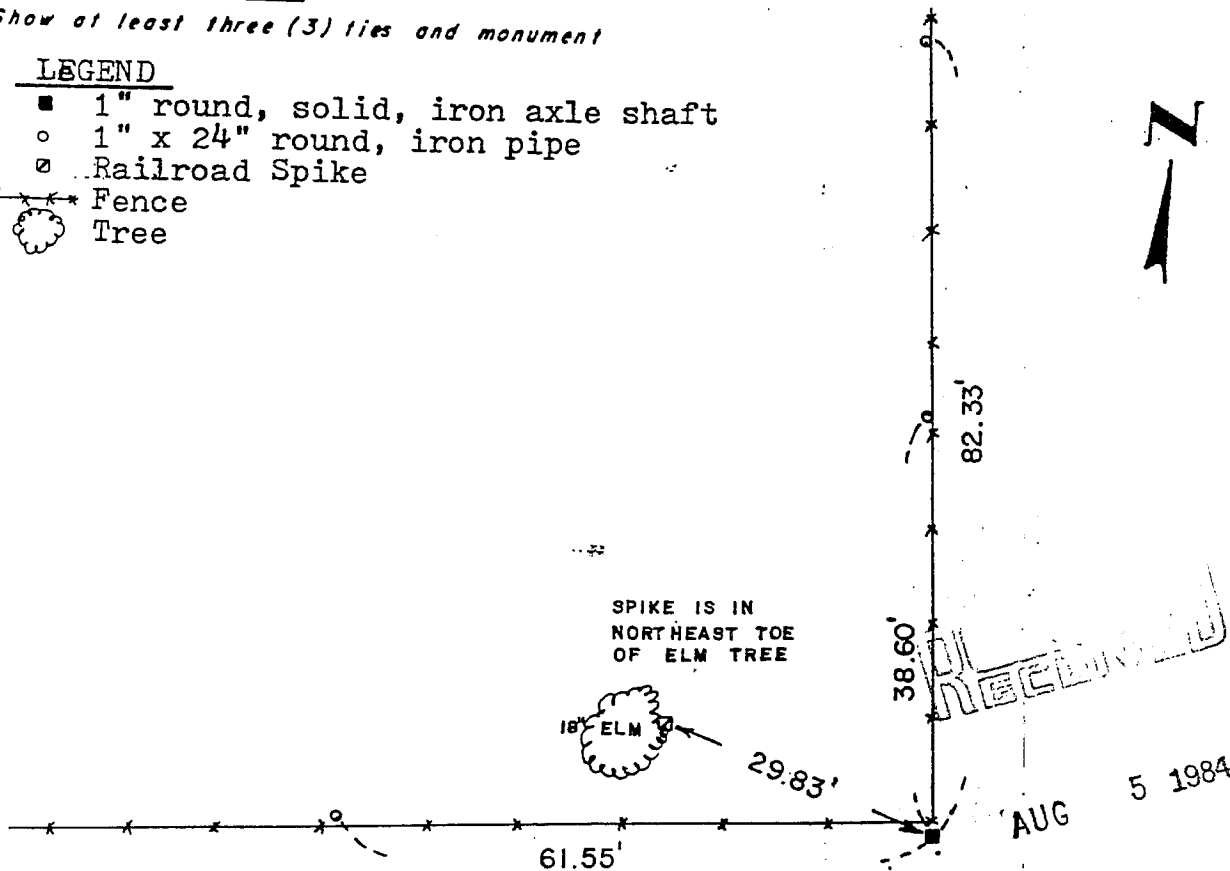
DATE: August 1, 1984

### TIE SKETCH

Show at least three (3) ties and monument

#### LEGEND

- 1" round, solid, iron axle shaft
- 1" x 24" round, iron pipe
- ◻ Railroad Spike
- x—x—x— Fence
- ☼ Tree



SPIKE IS IN  
NORTHEAST TOE  
OF ELM TREE

18' ELM

29.83'

61.55'

38.60'

82.33'

AUG 5 1984

