

APR 16 1990

GRANT COUNTY GOVERNMENT CORNER RECORD

W. 1/4 CORNER, SECTION 22, TOWNSHIP 6 NORTH, RANGE 3W
TOWN, CITY OR VILLAGE OF MOUNT IDA

TYPE OF MONUMENT: 3/4" X 24" IRON ROD ELEVATION-M.S.L. DATUM _____

STATE PLANE COORDINATES: N _____

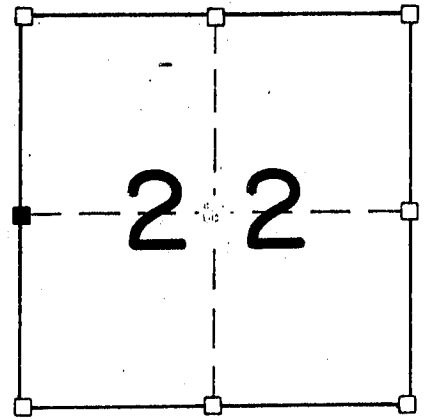
WISCONSIN SOUTH ZONE E _____

WITNESSES TO CORNER LOCATION

SEAN M. WALSH

PATRICK J. DEDERICH

SECTION 22, T. 6 N, R. 3 W
TOWN OF MOUNT IDA

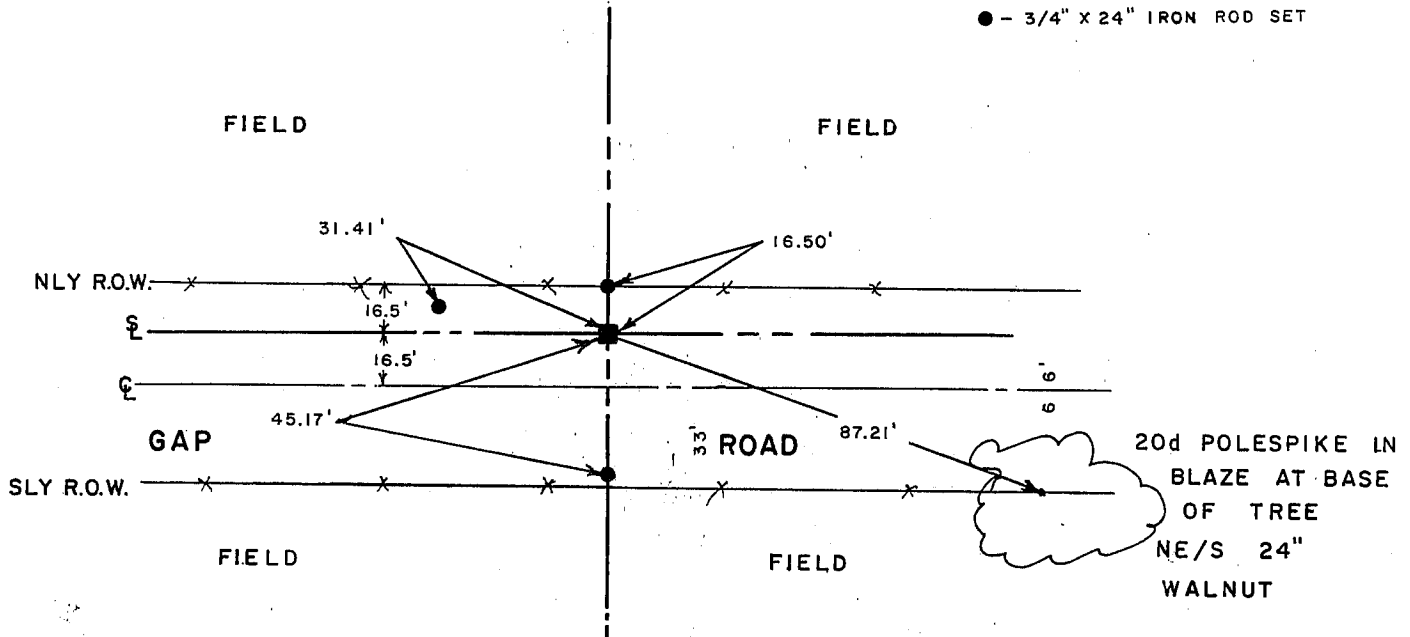


■ - CORNER LOCATION

● - 3/4" X 24" IRON ROD SET

NORTH

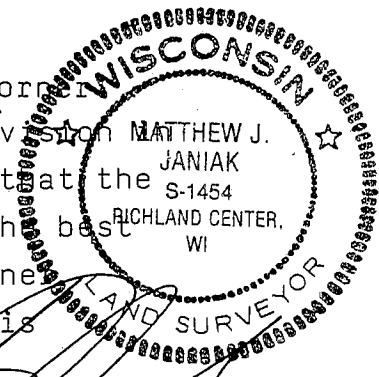
TIE SKETCH
(SHOW ALL HELPFUL FEATURES)



SURVEYOR'S CERTIFICATE
STATE OF WISCONSIN)
COUNTY) SS

SEAL S-1454

I, Matthew J. Janiak, DO HEREBY CERTIFY THAT the above corner
has been established under my direction and supervision
accordance with the information shown hereon and that the
information shown hereon is correct and true to the best
of my information, knowledge and belief. this corner
has been established at the occupied location, this



DATED THIS 22nd DAY OF April, 19 90

Matthew J. Janiak
REGISTERED LAND SURVEYOR

CORNER CODE

(OVER)

location fits very well with the other corners of the Northwest
One-quarter of Section 22.