

SEP 17 1972 U. S. PUBLIC LAND SURVEY MONUMENT RECORD

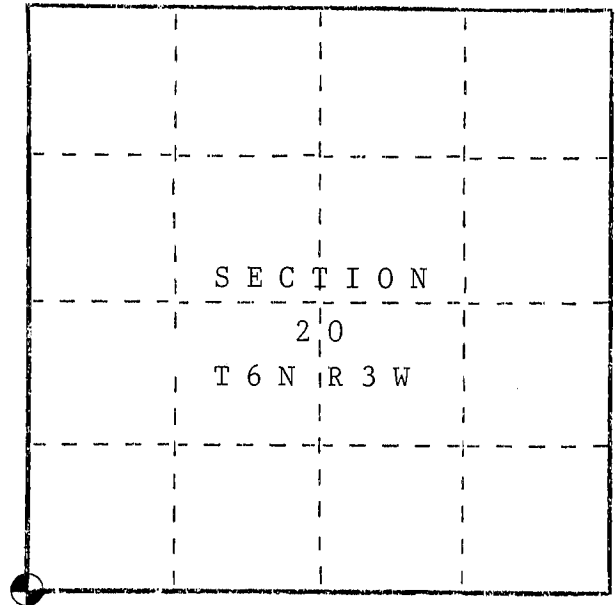
INSTRUCTIONS : This record shall show the location of the corner and shall include all of the following nine elements (a through i).

(a) Identify the corner by reference to the U.S. public land survey system.

○ = Corner monument restored.

Southwest corner of Section 20,
Town 6 North, Range 3 West, Town of
Mt. Ida, Grant County, WI

Set aluminum monument 6" below grade.



(b) Describe any record evidence, monument evidence, occupational evidence, testimonial evidence or any other material evidence you considered, and whether the monument was found or placed.

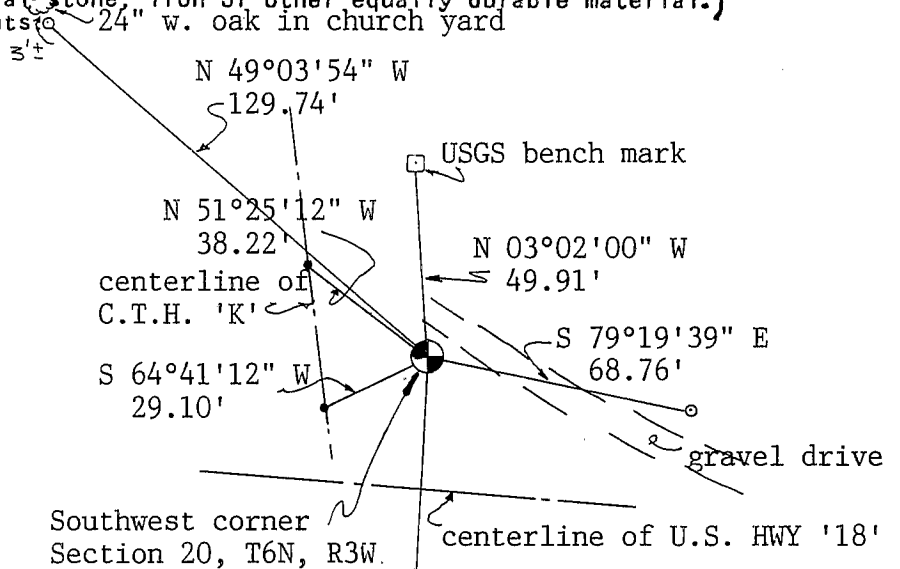
I found a 1" iron pipe at this corner as shown on tie sheet of Sean Walsh. I accepted this location as it fit all existing occupational evidence. I set new ties as the existing ties are in areas that will be excavated. I set an aluminum monument 6" below grade.

(c) In the plan view drawing below, provide reference ties to at least 4 witness monuments, or, if the location is within a municipality, to at least 2 witness monuments. (Witness monuments shall be made of concrete, natural stone, iron or other equally durable material.) Describe witness monuments.

(d) Show a plan view drawing depicting the relevant monuments and reference ties which is sufficient in detail to enable accurate relocation of the corner monument if the corner monument is disturbed. Indicate north.



Scale 1"=50'
Grid Bearings



- Set aluminum monument
- Found railroad spike
- Reference ties are 3/4" x 24" Rebars

3' East of buried telephone cable sign.

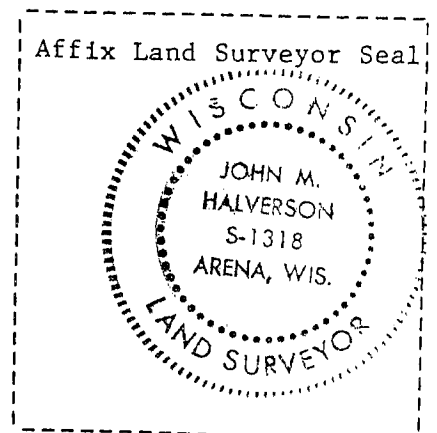
(e) Describe any material discrepancy between the location of the corner as restored or reestablished and the location of that corner as previously restored or reestablished by distance and direction. Show the discrepancy on the plan or drawing under (d), above. Show the distances between the corner as previously restored or reestablished and (1) the corner as restored or reestablished, and (2) to at least 2 of the witness monuments shown on the drawing in (d), above.

(f) Was the corner restored through acceptance of (1) an obliterated evidence location, or, (2) a found perpetuated location?

(2) a found perpetuated location

(g&h) Was the corner reestablished through lost corner proportionate methods? If so, show the method, including the directions and distances to other public land survey corners used as evidence or used for proportioning in determining the corner location?

No.



(i) I, John M. Halverson
(type or print name) certify that the corner location shown on this record was determined by me or under my direction and control and that this U.S. Public Land Survey Monument Record is correct and complete to the best of my knowledge and belief.

John M. Halverson
Signature

11/13/92
Date

PP 10

JUL 1 1991

GOVERNMENT CORNER RECORD

NORTHWEST CORNER, SECTION 29, TOWNSHIP 6 NORTH, RANGE 3 ~~EAST~~ WEST,

TOWN, CITY OR VILLAGE OF MOUNT IDA

TYPE OF MONUMENT: 3/4" IRON ROD FOUND ELEVATION - M.S.L. DATUM

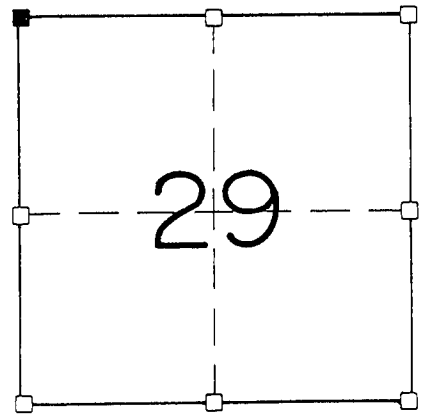
WITNESSES TO CORNER LOCATION

SEAN M. WALSH

PATRICK J. DEDERICH

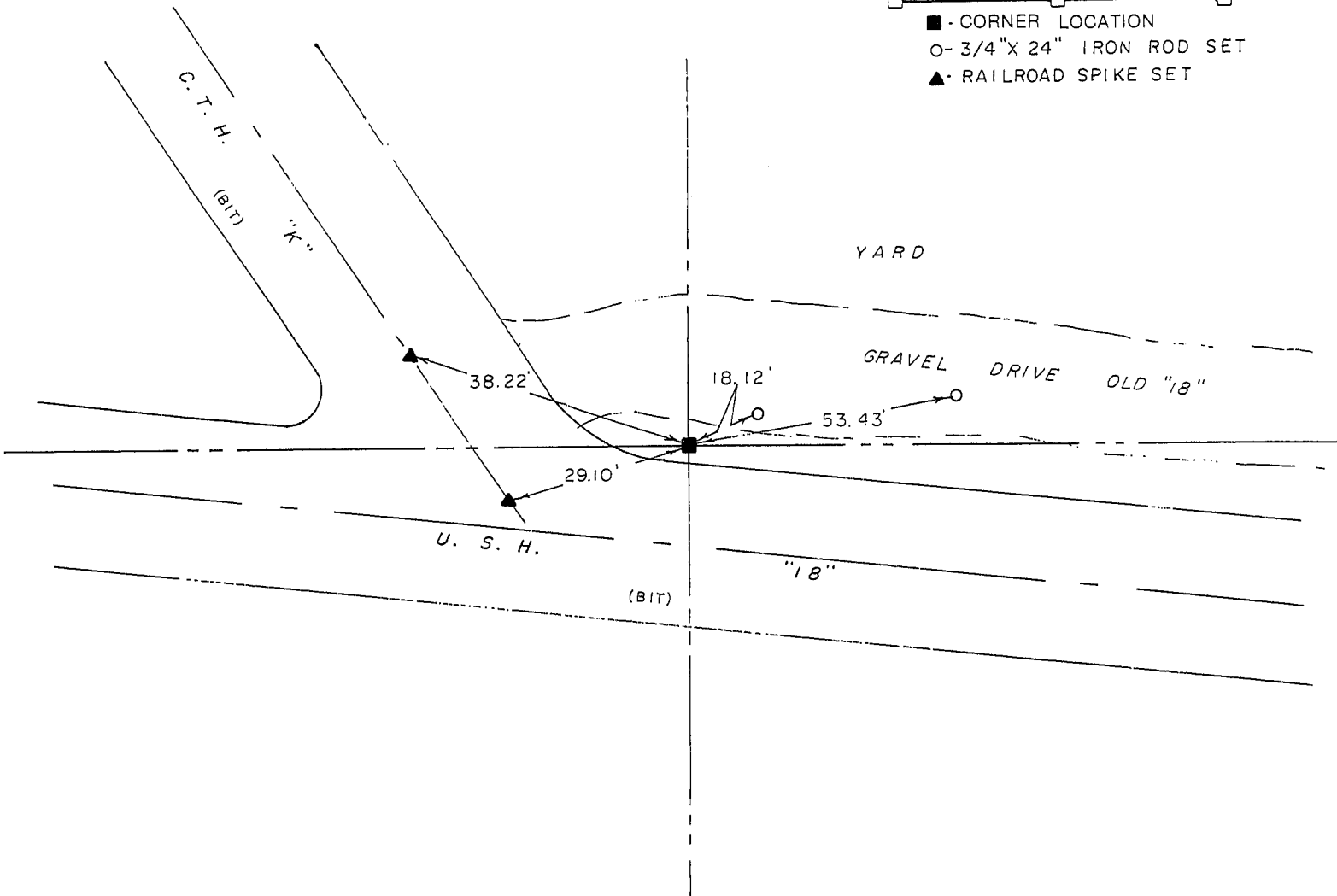
SECTION 29, T. 6 N, R. 3 W

TOWN OF MOUNT IDA



- - CORNER LOCATION
- - 3/4" X 24" IRON ROD SET
- ▲ - RAILROAD SPIKE SET

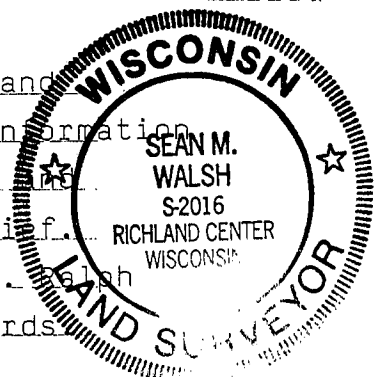
TIE SKETCH (SHOW ALL HELPFUL FEATURES)



SURVEYOR'S CERTIFICATE

SEAL S. 2016

I, Sean M. Walsh DO HEREBY CERTIFY THAT I have accepted and
 perpetuated the above corner in accordance with the information
 contained hereon and that this information is correct and
 true to the best of my information, knowledge and belief.
 I found this iron rod in place as recorded by Homer D. Walsh
 on page 197 of book F of the grant county survey records.



DATED THIS 10TH DAY OF JUNE, 19 91

Sean M. Walsh
REGISTERED LAND SURVEYOR