

# U.S. PUBLIC LAND SURVEY MONUMENT RECORD - GRANT COUNTY, WI

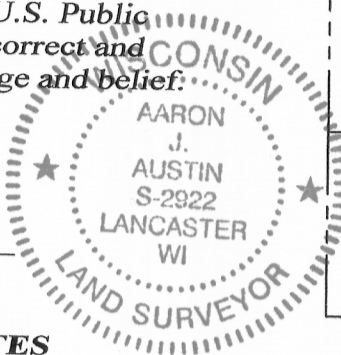
Section 19, Town 6 North Range 3 West, Town of Mt. Ida

**CERTIFICATE:**

I, Aaron J. Austin, Wisconsin Professional Land Surveyor, do hereby certify that the corner location on this record was determined by me and/or under my direct supervision and that this U.S. Public Land Survey Monument Record is correct and complete to the best of my knowledge and belief.

Dated this 28th day of March, 2016.

*Aaron J. Austin*  
 Aaron J. Austin, S-2922



● = CORNER LOCATION

**GRANT COUNTY COORDINATES**

NAD 83 (2011 ADJUSTMENT)  
 N: 574,933.89 E: 801,845.87

**HISTORY OF CORNER ESTABLISHMENT:**

1833-Harvey Parke set the original corner. 1928-John Buser tied to the corner on a Survey indexed as GCA, 569. Buser made no mention of a monument at the corner location. No other record was found for this corner.

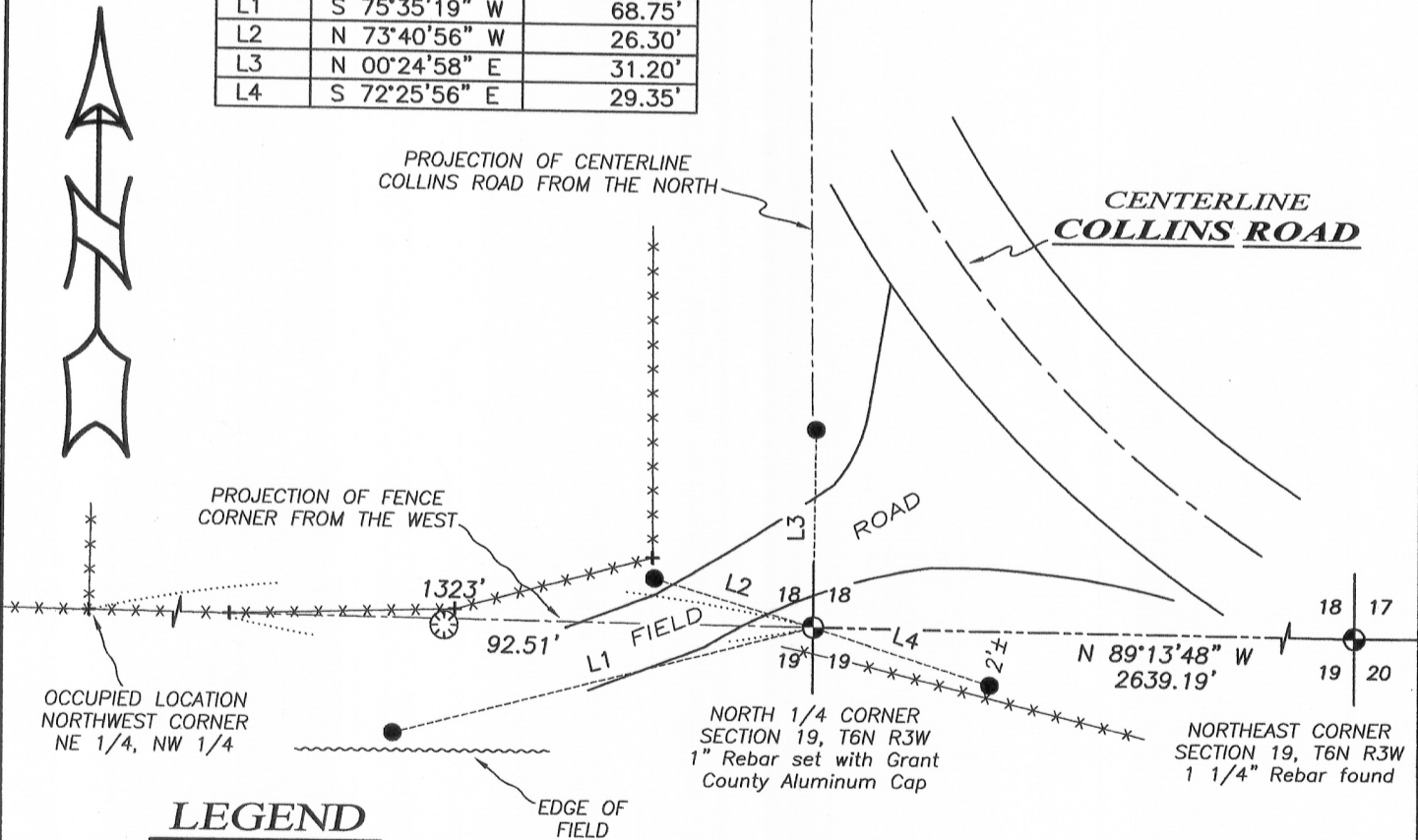
**DESCRIPTION OF CORNER EVIDENCE FOUND:**

I reset the corner online between the Northeast corner of Section 19 and a fence corner located 92 feet west of the North 1/4 corner at the projection of the centerline of Collins Road from the North. This fit the occupied 40 corners to the East and West extremely well along with the original recorded dimension of 40 chains to the Northeast corner of the Section. This location also appears to fit the general location of the public highway as established by Buser's Survey, considering the road has most likely been modified and/or reworked since 1928 to its current location. I would like to note that I did find a stump in the area of a possible bearing tree. By utilizing this stump, it did appear to match the fence to the North relatively well, although it did not coincide with the recorded dimension to the Northeast corner of the section or to the occupied 40 corners to the East and West of this corner, therefore I did not accept it as evidence in the retracement of this section corner.

**DESCRIPTION OF CORNER AND WITNESS MONUMENTS, references and accessories used to perpetuate the original or re-established location of this corner. Witnesses to corner location Shane Austin.**

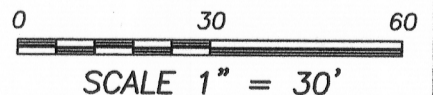
**SKETCH:**

LINE	BEARING	DISTANCE
L1	S 75°35'19" W	68.75'
L2	N 73°40'56" W	26.30'
L3	N 00°24'58" E	31.20'
L4	S 72°25'56" E	29.35'



**LEGEND**

- ⊕ Section Corner—as designated
- 1/2" x 12" Rebar set
- ⊗ Existing stump
- \*- Existing fence



4211 HWY 81 E, LANCASTER, WI 53813  
 PHONE: 608-723-6363 FAX: 608-723-6702

JOB NO: 15s177  
 H:\CRD\15s177  
 H:\TIE\T6NR3W\72

FIELDBOOK: TDSR  
 DRAWN BY: AJ AUSTIN  
 CREW: SW AUSTIN