

GRANT COUNTY CERTIFIED LAND CORNER

CORNER NUMBER 68

CERTIFICATE:

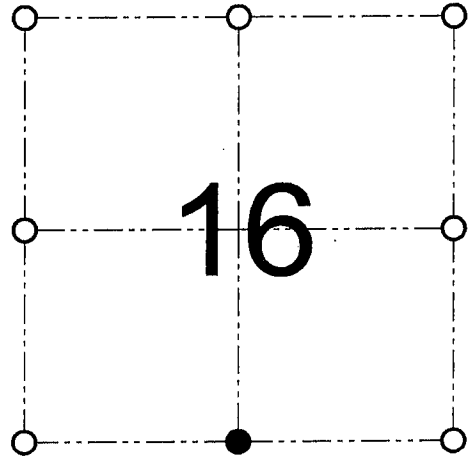
I, Larry L. Austin, do hereby certify that on the 16th day of November, 2000, I found no evidence of the South 1/4 corner of Section 16, Town 6 North, Range 3 West, of the 4th Principal Meridian, and I re-established said corner according to the Wisconsin statutes as shown and described hereon.

Dated this 28th day of December, 2000

Larry L. Austin
Larry L. Austin S-1903



SEAL



● = CORNER LOCATION

SOUTH 1/4 CORNER OF
SECTION 16, T 6 N R 3 W
TOWN OF MOUNT IDA

HISTORY OF ORIGINAL CORNER ESTABLISHMENT:

Corner was originally set in 1833 by Harvey Parke.
In 1854 John Clark found the original post in mound. No other record of the corner was found.

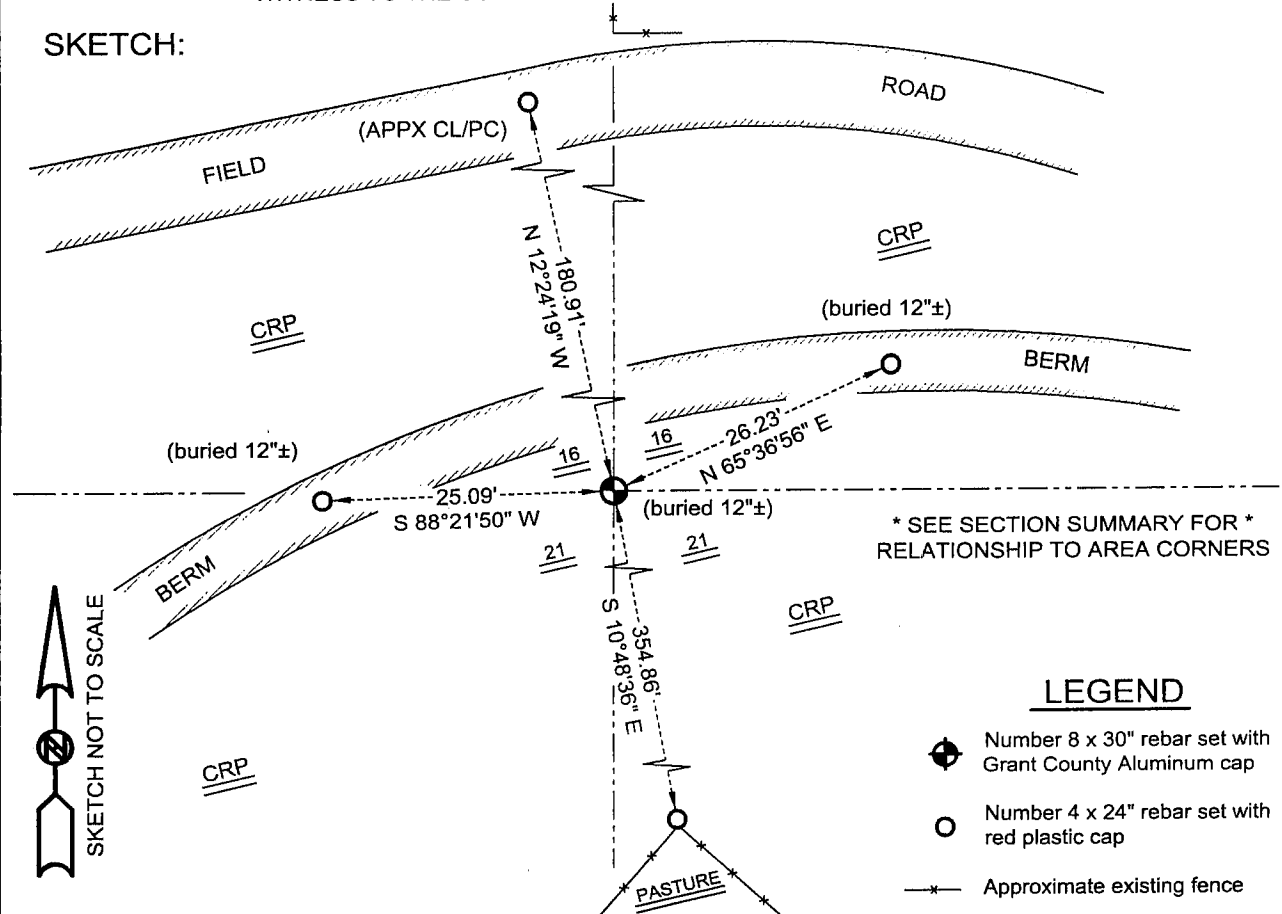
DESCRIPTION OF CORNER EVIDENCE FOUND:

I found an existing North-South fence, North of the corner and accepted it for Easting. Northing was established by a straight line between the Southwest and Southeast corners of Section 16. This location fit other occupied lines in the area. Verified this location using EDM & GPS methods.

DESCRIPTION OF CORNER AND WITNESS MONUMENTS, references and accessories used to perpetuate the original or re-established location of this corner

WITNESS TO THE CORNER LOCATION: SHANE AUSTIN & TIM FAUVER

SKETCH:



LEGEND

- Number 8 x 30" rebar set with Grant County Aluminum cap
- Number 4 x 24" rebar set with red plastic cap
- *— Approximate existing fence

AUSTIN ENGINEERING, LLC
4211 HWY 81 E, LANCASTER, WI 53813
PHONE 608-723-6363 FAX 608-723-6702

FIELDBOOK: SDR33, 2037
G:\T6NR3W\09
C:\SC14\SWA\TIE\T6NR3W\68

DRAWN BY: SW AUSTIN
APPROVED: LL AUSTIN
CREW: BS - SB - SA - TF