

# GRANT COUNTY GOVERNMENT CORNER RECORD

NW CORNER, SECTION 22, TOWNSHIP 6 NORTH, RANGE 3 W  
TOWN, ~~VILLAGE~~ OF MOUNT IDA

TYPE OF MONUMENT: 3/4" DIA. IRON ROD FOUND ELEVATION - M.S.L. DATUM \_\_\_\_\_

STATE PLANE COORDINATES: N \_\_\_\_\_

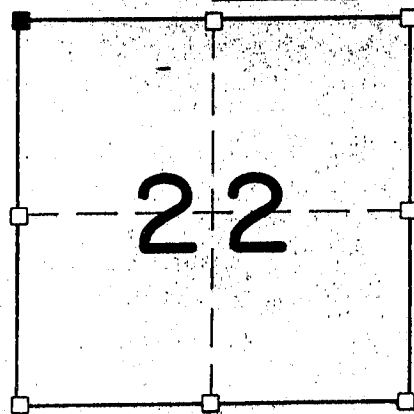
WISCONSIN SOUTH ZONE E \_\_\_\_\_

WITNESSES TO CORNER LOCATION

SEAN M. WALSH \_\_\_\_\_

PATRICK J. DEDERICH \_\_\_\_\_

SECTION 22, T 6 N, R 3 W  
TOWN OF MOUNT IDA

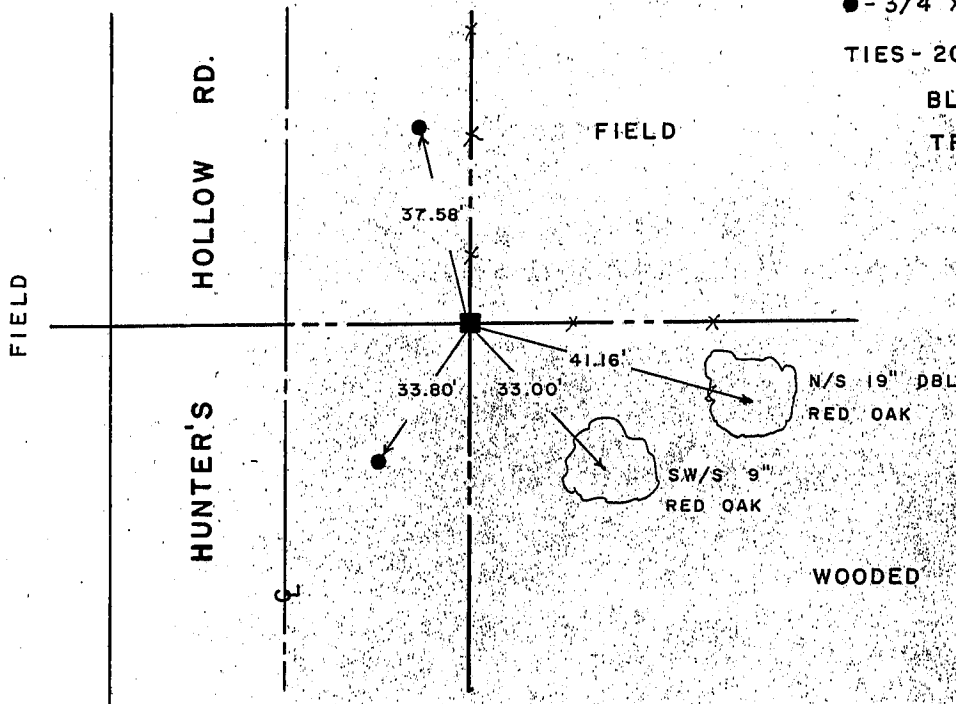


■ - CORNER LOCATION

● - 3/4" X 24" IRON ROD SET  
TIES - 20d POLESPIKE IN  
BLAZE AT BASE OF  
TREE.



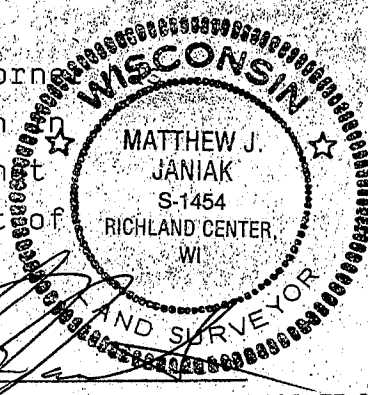
TIE SKETCH  
(SHOW ALL HELPFUL FEATURES)



SURVEYOR'S CERTIFICATE  
STATE OF WISCONSIN )  
COUNTY ) SS

SEAL S- 1454

I, Matthew J. Janiak, DO HEREBY CERTIFY THAT the above corner  
been perpetuated under my direction and supervision in  
accordance with the information shown hereon and that  
the information shown hereon is correct to the best of  
my information and belief. this corner has been  
perpetuated at the location of the



DATED THIS 22nd DAY OF April, 19 90

REGISTERED LAND SURVEYOR

CORNER CODE

67

3/4" iron rod which was found at the occupied corner, this location fits very well with the other corners of the Northwest One-quarter of section 22 and was accepted as being the correct location of this corner.