

APR 16 1974

# GRANT COUNTY GOVERNMENT CORNER RECORD

N 1/4 CORNER, SECTION 22, TOWNSHIP 6 NORTH, RANGE 3 W  
TOWN, CITY OR VILLAGE OF MOUNT IDA

TYPE OF MONUMENT: 3/4" X 24" IRON ROD ELEVATION-M.S.L. DATUM

STATE PLANE COORDINATES: N

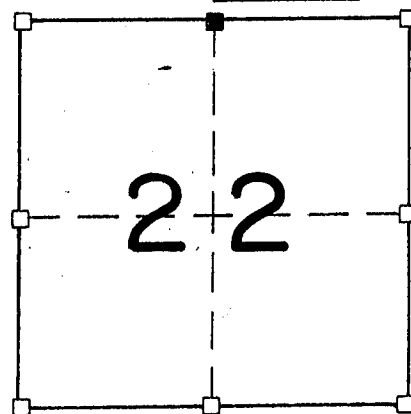
WISCONSIN SOUTH ZONE E

WITNESSES TO CORNER LOCATION

SEAN M. WALSH

PATRICK J. DEDERICH

SECTION 22, T 6 N, R 3 W  
TOWN OF MOUNT IDA

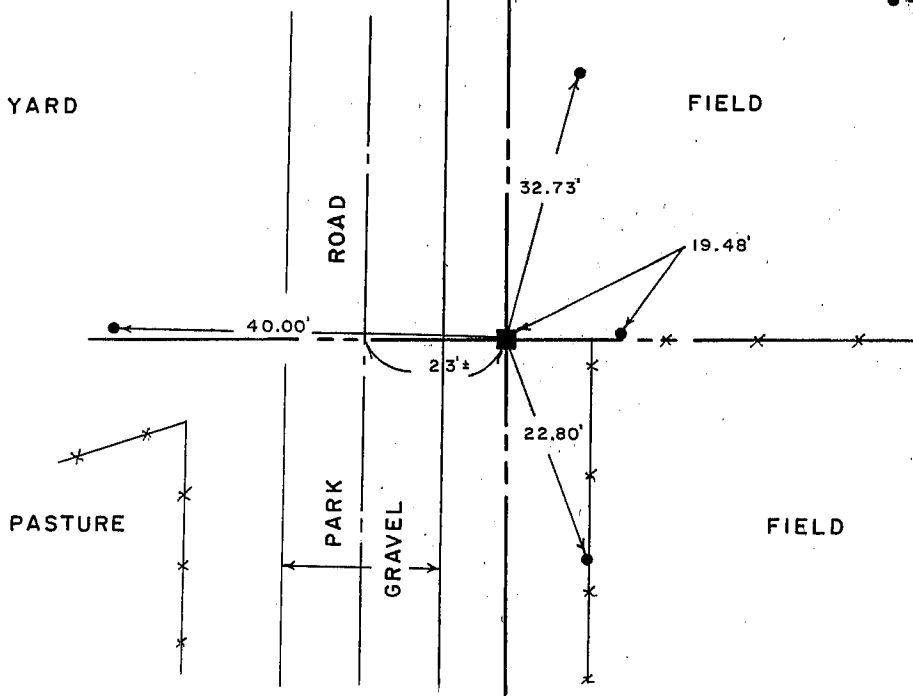


■ - CORNER LOCATION

● - 3/4" X 24" IRON ROD SET

NORTH

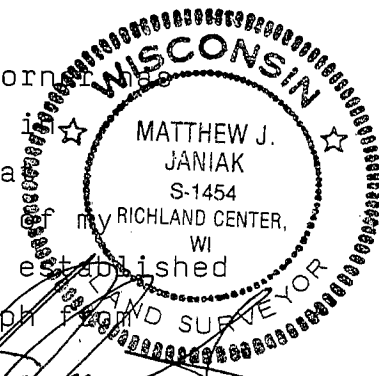
TIE SKETCH  
(SHOW ALL HELPFUL FEATURES)



SURVEYOR'S CERTIFICATE  
STATE OF WISCONSIN )  
COUNTY ) SS

SEAL S-1454

I, Matthew J. Janiak, DO HEREBY CERTIFY THAT the above corner  
has been established under my direction and supervision in  
accordance with the information shown hereon and that  
the information shown hereon is correct to the best  
information, knowledge and belief. this corner was established  
through the retracement of a survey by Homer D. Ralph  
July of 1974, this location works



DATED THIS 22ND DAY OF March, 1974

REGISTERED LAND SURVEYOR

CORNER CODE

666

( OVER )

very well with the location of the other corners of the Northwest  
one-quarter of Section 22.