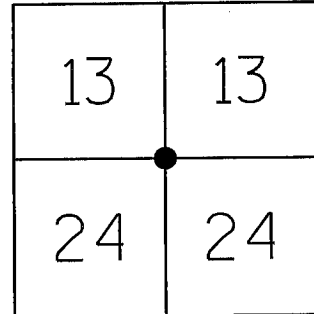


U.S. PUBLIC LAND SURVEY MONUMENT RECORD GRANT COUNTY, WISCONSIN

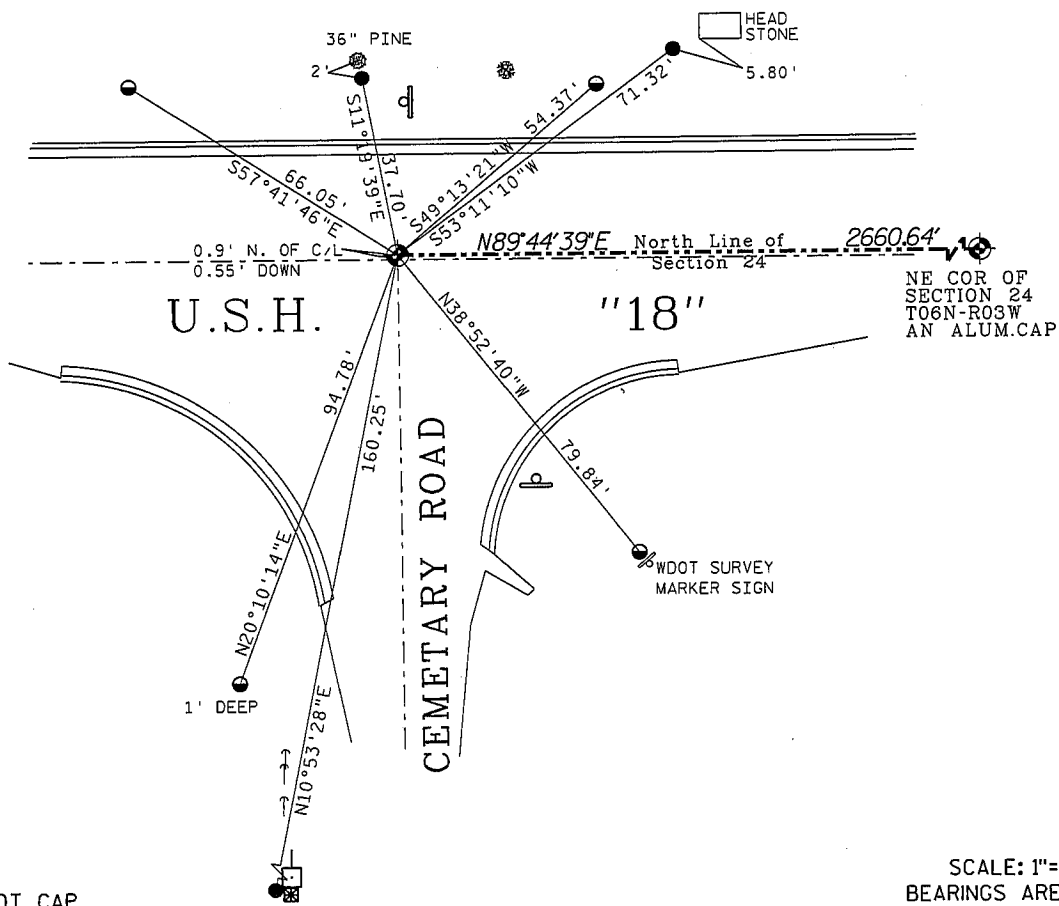
IN ACCORDANCE WITH WISCONSIN ADMINISTRATIVE CODE, CHAPTER A-E 7.08 (3) (A)-(I)

LOCATION: (A) THE IDENTITY OF THE CORNER, AS REFERENCED TO THE U.S. PUBLIC LAND SURVEY SYSTEM

SECTION 24 - TOWN 06 NORTH - RANGE 03 WEST
 TOWNSHIP OF MOUNT IDA
 TYPE OF CORNER 1/4 CORNER
 TYPE OF MONUMENT AN ALUMINUM MONUMENT
 HORIZONTAL DATUM _____
 NORTHING/LATITUDE _____
 EASTING/LONGITUDE _____
 VERTICAL DATUM X
 ELEVATION X



PLAN VIEW: (C) REFERENCE TO AT LEAST 4 WITNESS MONUMENTS. WITNESS MONUMENTS SHALL BE CONCRETE, OTHER THAN BEARING TREES; (D) A PLAN VIEW DEPICTING THE RELEVANT MONUMENTS AND REFERENCE TIES WHICH ARE SUFFICIENT IN DETAIL TO ENABLE ACCURATE RELOCATION OF THE CORNER MONUMENT IF THE CORNER MONUMENT IS DISTURBED; (E) A DESCRIPTION OF ANY MATERIAL DISCREPANCY BETWEEN THE LOCATION OF THE CORNER AS RESTORED OR REESTABLISHED AND THE LOCATION OF THAT CORNER AS PREVIOUSLY RESTORED OR REESTABLISHED.



LEGEND

- ▣ R/W POST
- 3/4" REBAR
- ALUMINUM WDOT CAP

SCALE: 1"=40 FEET +/-
 BEARINGS ARE REFERENCED
 TO THE NORTH LINE
 OF SECTION 24

SURVEYORS CERTIFICATE: CHAPTER 7.08 (3) (I)

THE UNDERSIGNED HEREBY CERTIFIES THAT THE U.S. PUBLIC LAND SURVEY MONUMENT RECORD SHOWN WAS DETERMINED BY THEM OR UNDER THEIR DIRECTION AND IS CORRECT TO THE BEST OF THEIR KNOWLEDGE AND BELIEF.



Mathew D. Reigel
 REIGEL LAND SURVEYING, L.L.C.
 MATHEW D. REIGEL, WISCONSIN REGISTERED LAND SURVEYOR S-2321

MARCH 15TH, 2006
 DATE CERTIFIED

U.S. PUBLIC LAND SURVEY MONUMENT RECORD GRANT COUNTY, WISCONSIN

IN ACCORDANCE WITH WISCONSIN ADMINISTRATIVE CODE, CHAPTER A-E 7.08 (3) (A)-(I)

RECOVERY PROCEDURES:

- (B) A DESCRIPTION OF ANY RECORD EVIDENCE, MONUMENT EVIDENCE, OCCUPATIONAL EVIDENCE, TESTIMONIAL EVIDENCE OR ANY OTHER MATERIAL EVIDENCE CONSIDERED BY THE SURVEYOR, AND WHETHER THE MONUMENT WAS FOUND OR PLACED;
- (F) WHETHER THE CORNER WAS RESTORED THROUGH ACCEPTANCE OF AN OBLITERATED EVIDENCE LOCATION OR A FOUND PERPETUATED LOCATION;
- (G) WHETHER THE CORNER WAS REESTABLISHED THROUGH LOST-CORNER PROPORTIONATE METHODS;
- (H) THE DIRECTIONS DISTANCES TO OTHER PUBLIC LAND SURVEY CORNERS WHICH WERE USED AS EVIDENCE OR USED FOR PROPORTIONING IN DETERMINING THE CORNER LOCATION;

I FOUND THE CORNER AND TIES AS SHOWN. THE INTERSECTION HAS CHANGED FROM THE TIE SHEET DATED SEPTEMBER 17TH, 1993 AND HAS BEEN RECONSTRUCTED AS SHOWN ON DIAGRAM.

--	--	--

SURVEYORS CERTIFICATE: CHAPTER 7.08 (3) (I)



THE UNDERSIGNED HEREBY CERTIFIES THAT THE U.S. PUBLIC LAND SURVEY MONUMENT RECORD SHOWN WAS DETERMINED BY THEM OR UNDER THEIR DIRECTION AND IS CORRECT TO THE BEST OF THEIR KNOWLEDGE AND BELIEF.

Mathew D. Reigel
REIGEL LAND SURVEYING, LLC.
MATHEW D. REIGEL, WISCONSIN REGISTERED LAND SURVEYOR S-2321

MARCH 15TH, 2006
DATE CERTIFIED

SEP 17 1993

U. S. PUBLIC LAND SURVEY MONUMENT RECORD

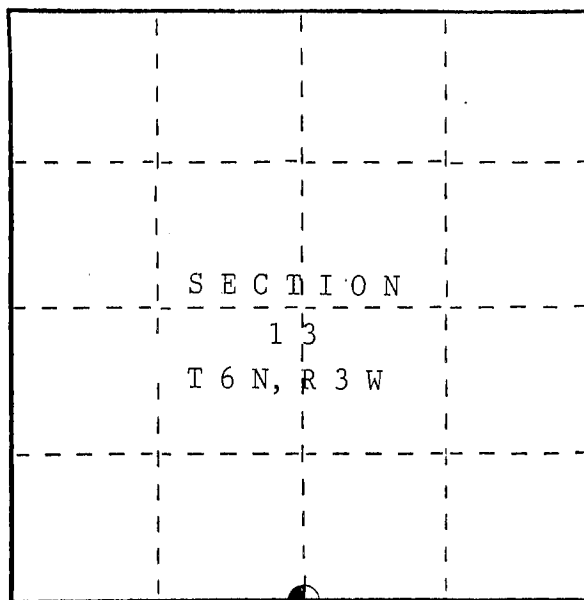
INSTRUCTIONS: This record shall show the location of the corner and shall include all of the following nine elements (a through i).

(a) Identify the corner by reference to the U.S. public land survey system.

○ = Corner monument restored.

South $\frac{1}{4}$ corner of Section 13,
Town 6 North, Range 3 West, Town of
Mt. Ida, Grant County, WI

Set aluminum monument 12" below grade.

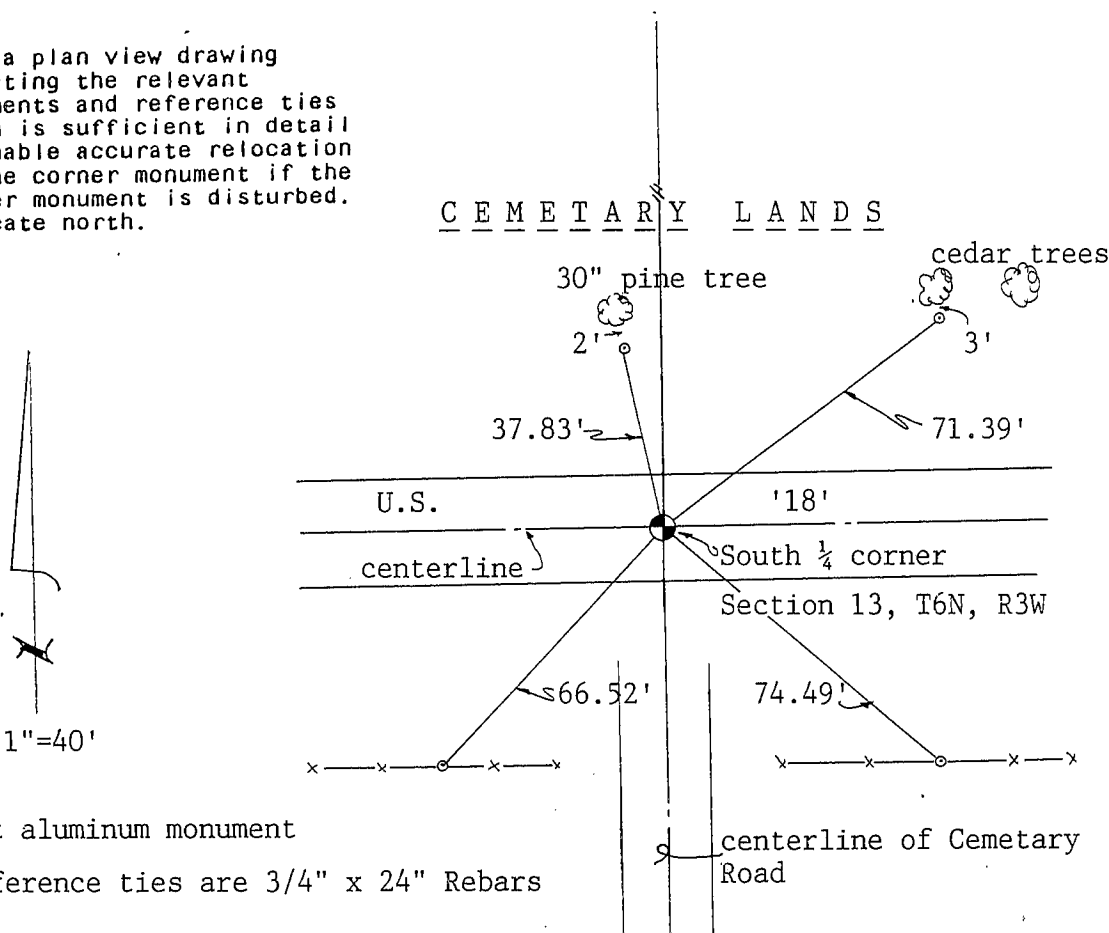


(b) Describe any record evidence, monument evidence, occupational evidence, testimonial evidence or any other material evidence you considered, and whether the monument was found or placed.

A deed recorded in Volume 113, Page 435 refers to corner located in the highway and 301' west of the southeast corner of cemetery. I located an existing fence on the west line of the existing cemetery and a fence corner on the north line of the cemetery at the point of intersection with the n-s $\frac{1}{4}$ line with a fence line north. I set the corner in the centerline of U.S. HWY '18' the recorded distance from the west line of the cemetery. This corner location fits fence on north line as well as the centerline of Cemetery Road south. In setting the corner at a depth of 42" I located a large stone at bottom of hole. Set aluminum monument on top of stone 12" below grade.

(c) In the plan view drawing below, provide reference ties to at least 4 witness monuments, or, if the location is within a municipality, to at least 2 witness monuments. (Witness monuments shall be made of concrete, natural stone, iron or other equally durable material.) Describe witness monuments.

(d) Show a plan view drawing depicting the relevant monuments and reference ties which is sufficient in detail to enable accurate relocation of the corner monument if the corner monument is disturbed. Indicate north.



- Set aluminum monument
- Reference ties are 3/4" x 24" Rebars

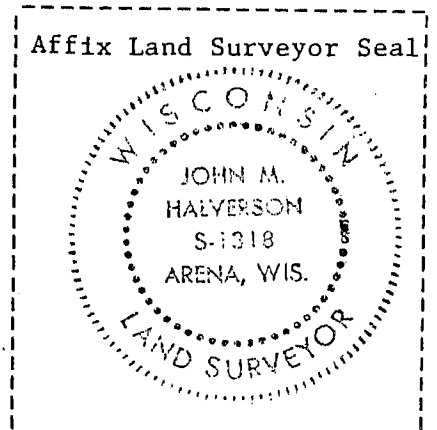
(e) Describe any material discrepancy between the location of the corner as restored or reestablished and the location of that corner as previously restored or reestablished by distance and direction. Show the discrepancy on the plan view drawing under (d), above. Show the distances between the corner as previously restored or reestablished and (1) the corner as restored or reestablished, and (2) to at least 2 of the witness monuments shown on the drawing in (d), above.

(f) Was the corner restored through acceptance of (1) an obliterated evidence location, or, (2) a found perpetuated location?

(g&h) Was the corner reestablished through lost corner proportionate methods? If so, show the method, including the directions and distances to other public land survey corners used as evidence or used for proportioning in determining the corner location?

No.

(i) I, John M. Halverson
(type or print name) certify that the corner location shown on this record was determined by me or under my direction and control and that this U.S. Public Land Survey Monument Record is correct and complete to the best of my knowledge and belief.



John M. Halverson
Signature

11/13/92
Date