

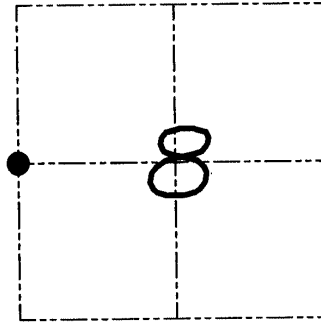
U.S. PUBLIC LAND SURVEY MONUMENT RECORD

Section 8, Town 6 North Range 3 West, Town of Mount Ida, Grant County, Wisconsin

CERTIFICATE

I, Larry L. Austin, do hereby certify that the corner location on this record was determined by me and/or under my direct supervision and that this U.S. public land survey monument record is correct and complete to the best of my knowledge.

Larry L. Austin
 Larry L. Austin
 7-28-08 date
 LANCASTER WI
 LAND SURVEYOR



● = CORNER LOCATION

HISTORY OF CORNER

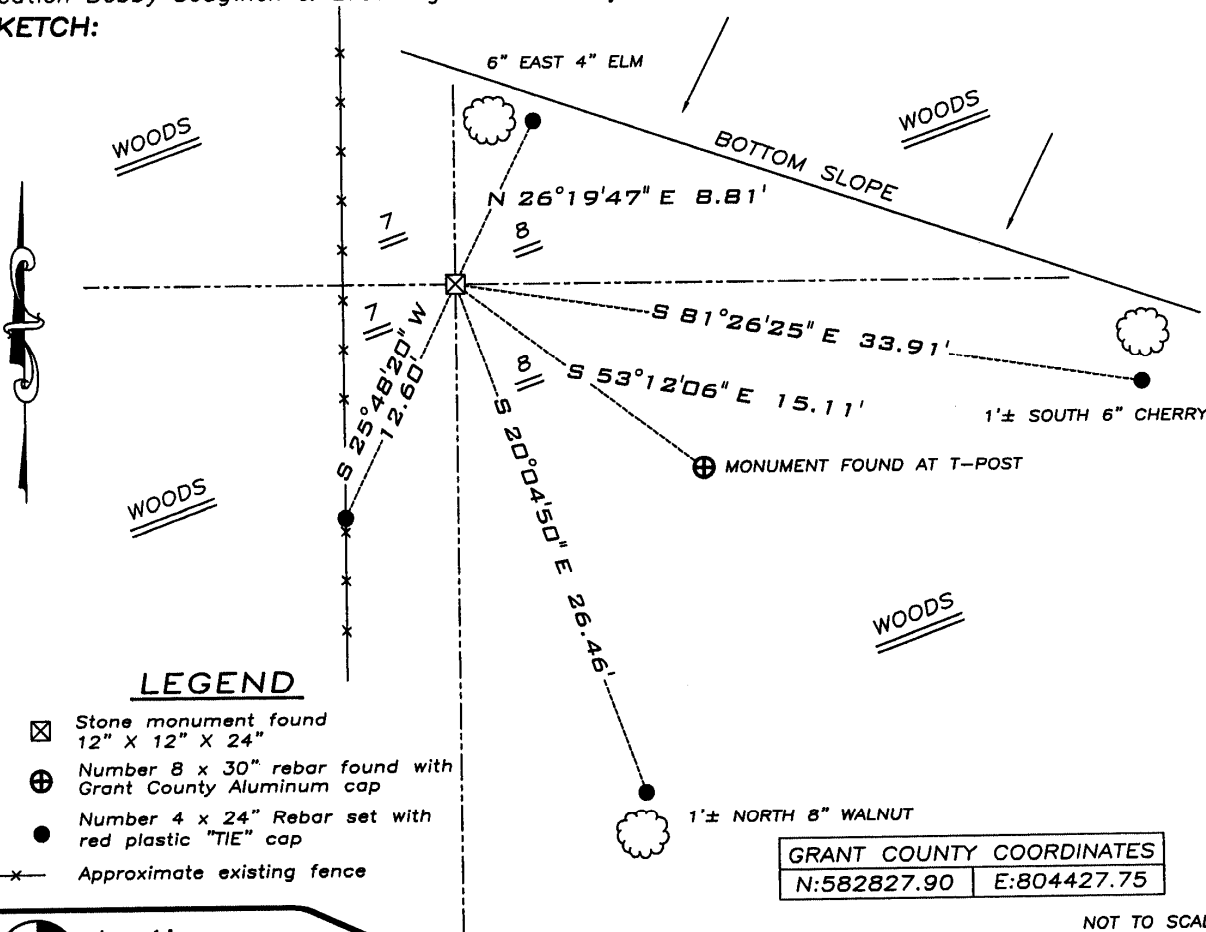
Corner was originally set in 1832 by Parke. In 1909 Appleby set a Stone monument at this location. In the 1990's Bowden and myself used a No. 10 iron bar. No other record of the corner was found.

CORNER EVIDENCE FOUND

I found a county monument and stone monument at this location. I accepted the stone monument because it is located proportionately between the Northwest and Southwest corners of Section 8, and was also established prior to the others. Verified this location using EDM & GPS methods.

DESCRIPTION OF CORNER AND WITNESS MONUMENTS, references and accessories used to perpetuate the original or re-established location of this corner. Witnesses to monument location Bobby Sedgwick & Brad Digman & Shelby Blindert

SKETCH:



LEGEND

- ☒ Stone monument found 12" X 12" X 24"
- ⊕ Number 8 x 30" rebar found with Grant County Aluminum cap
- Number 4 x 24" Rebar set with red plastic "TIE" cap
- x- Approximate existing fence

GRANT COUNTY COORDINATES	
N:582827.90	E:804427.75

NOT TO SCALE

Austin Engineering LLC
 4211 HWY 81 E, LANCASTER, WI 53813
 PHONE 608-723-6363 FAX 608-723-6702

JOB NUMBER 08S259-GRANT COUNTY HIGHWAY DEPT
 FIELDBOOK: TDSR, 2014 DRAWN BY: SW AUSTIN
 G:\T6NR3W\08 APPROVED: LL AUSTIN
 H:\TIE\T6NR3W\35

35